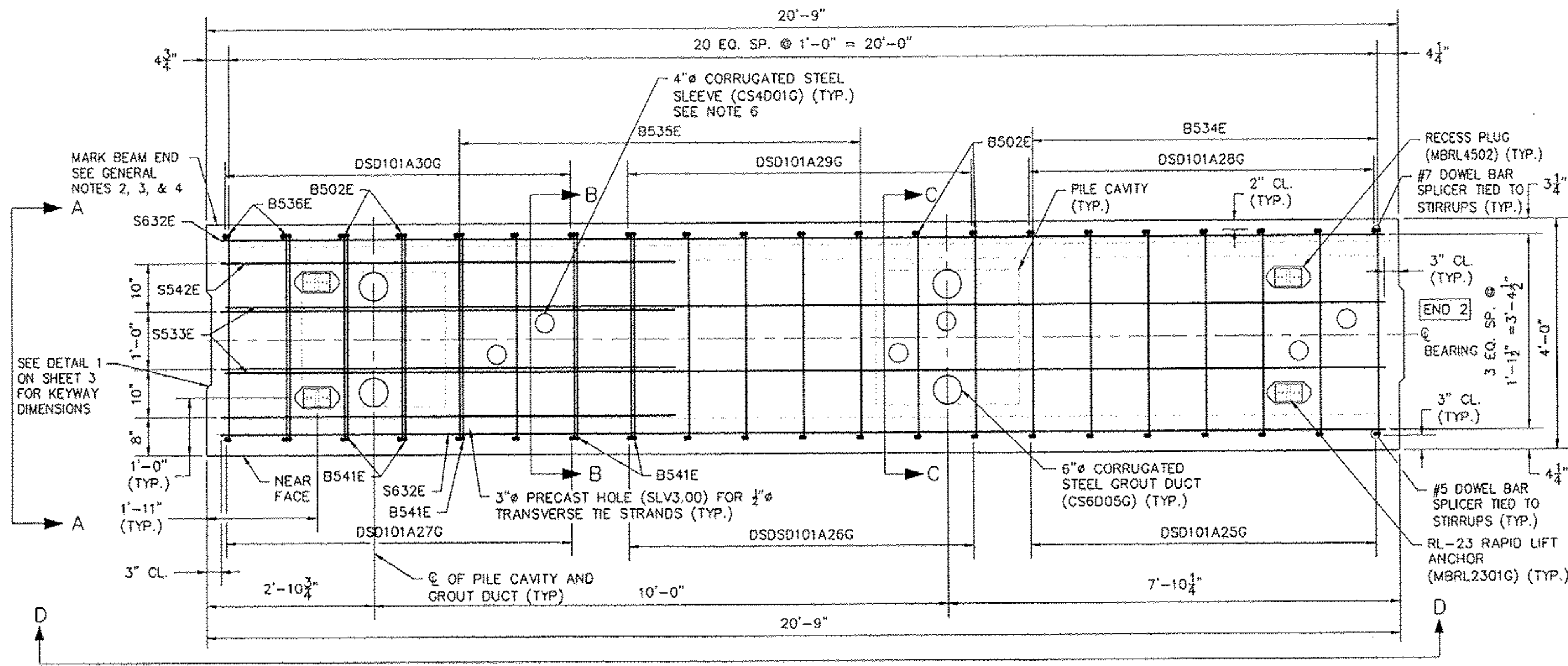
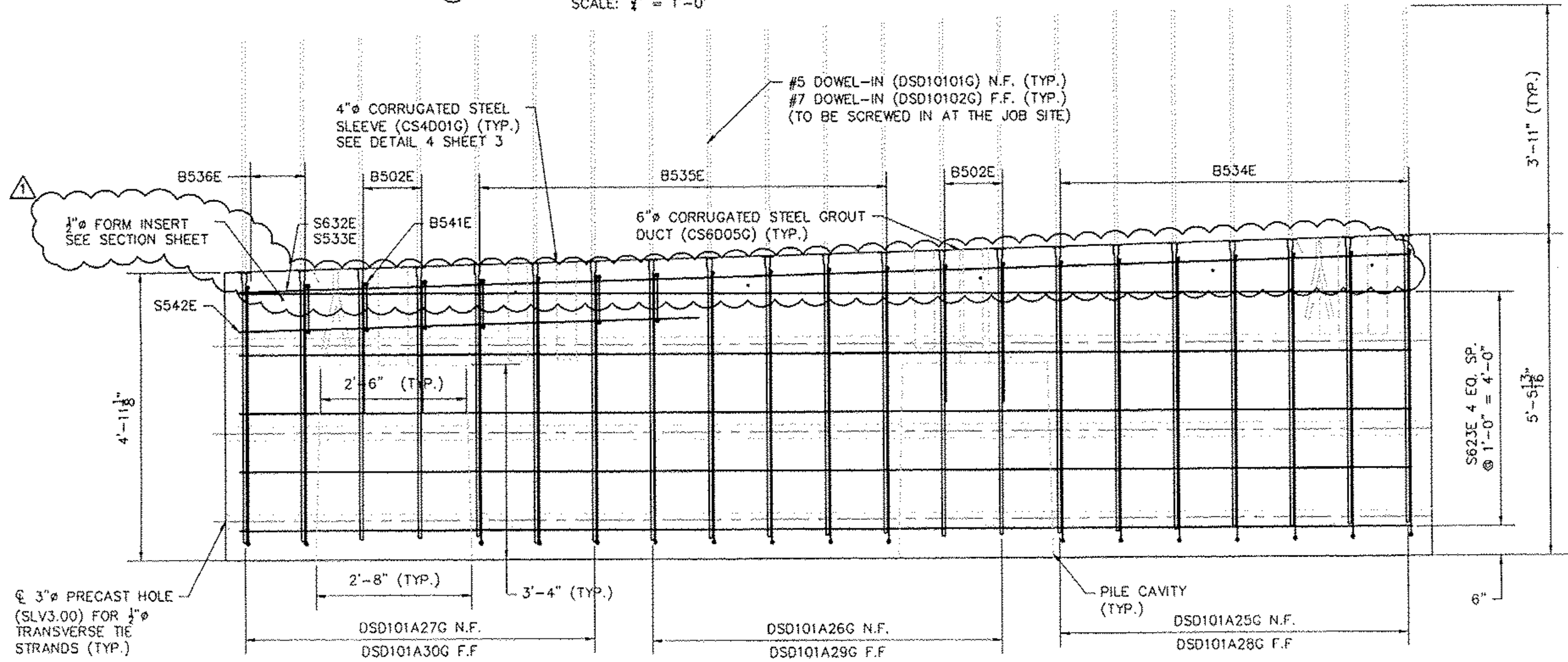




END 1
MATCH-CAST END
AGAINST END 2 OF
BAW-04-004



④ BAW-05 REINF. LAYOUT PLAN
SCALE: 1/4" = 1'-0"



⑤ BAW-05 SECTION D - ELEVATION
SCALE: 1/4" = 1'-0"

GENERAL NOTES:

1. SEE PLAN SHEETS 1, 2, & 3 FOR PLAN AND DETAILS.
2. ALL ABUTMENT PILE CAPS ARE LABELED AS FOLLOWS: PRODUCT TYPE-IDENTIFICATION NUMBER-SEQUENCE NUMBER.
3. MARK BAW-05 "SOUTH END", FOLLOWED BY THE CORRESPONDING BEAM LABEL.
4. FABRICATOR IS TO MARK ABUTMENT CAP END WITHIN CLOSE PROXIMITY TO THE NOTED END.
5. LIGHT SANDBLAST MATCH-CAST END PRIOR TO SHIPMENT TO REMOVE ANY FORM OIL, GREASE, LAITANCE, ETC.
6. SEE SHEET 2 FOR SLEEVE LOCATIONS. 4" SLEEVES ARE LOCATION CRITICAL.

RECEIVED
OK'D BY LJS OK'D BY RSY
MAR 11 2011
RESUBMIT _____ APPROVED _____
BY CPW DATE 3/28/11

REVISION NO.	REVISION DATE
1	MARCH 09, 2011

Hoyle, Tanner & Associates, Inc.
125 College Street, 4th Floor, Burlington, VT 05401
Tel: (802)860-1331 • Fax: (802)860-6499 • www.hoyletanner.com
© Copyright 2011 Hoyle, Tanner & Associates, Inc.

DRAWN BY: JLN DATE: FEBRUARY 2011
CHECKED BY: GHS PROJECT NO.: 122435.00

PRECAST CONCRETE PRODUCTS
TEL: (802) 442-4418 FAX: (802) 442-4719

CHESTER, VT
VT 103
BRIDGE #9
PROJECT NO.: BRF 025-1 (37)

CONSTRUCTION SET
FEBRUARY 18, 2011