

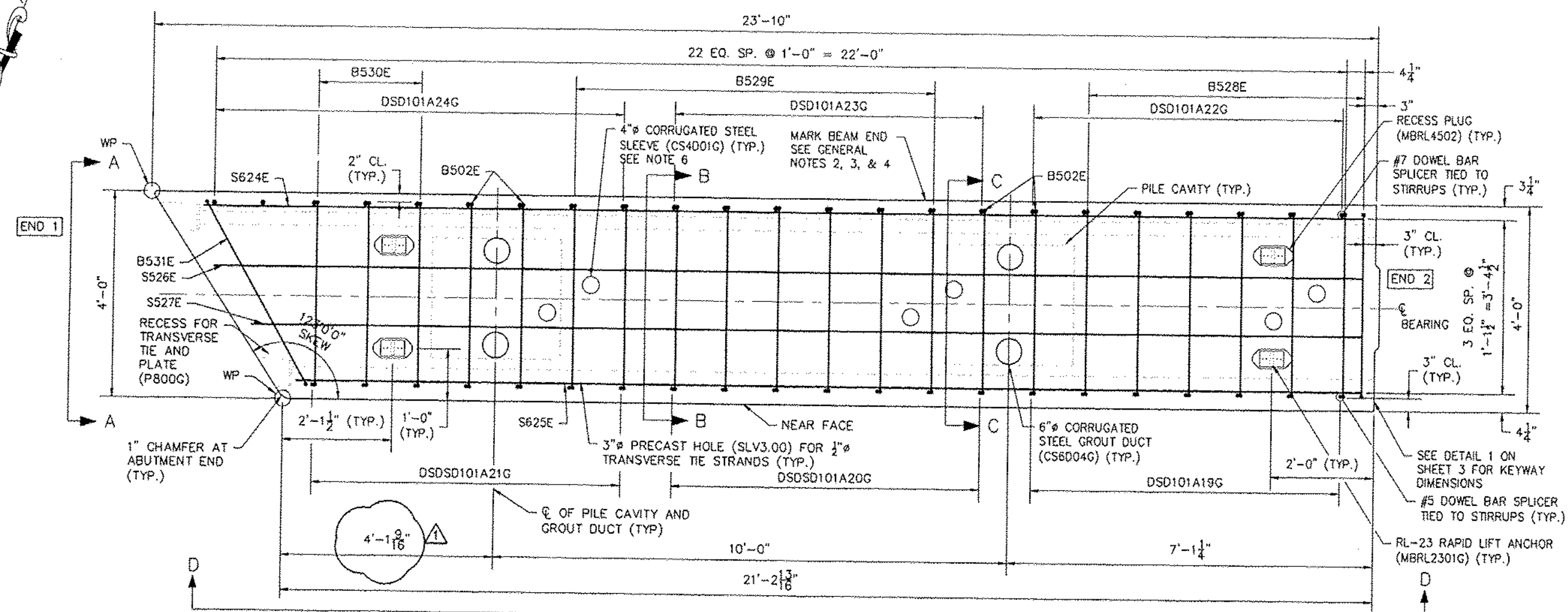
RECEIVED

OK'D BY RSJ OK'D BY RSY

MAR 11 2011

RESUBMIT _____ APPROVED

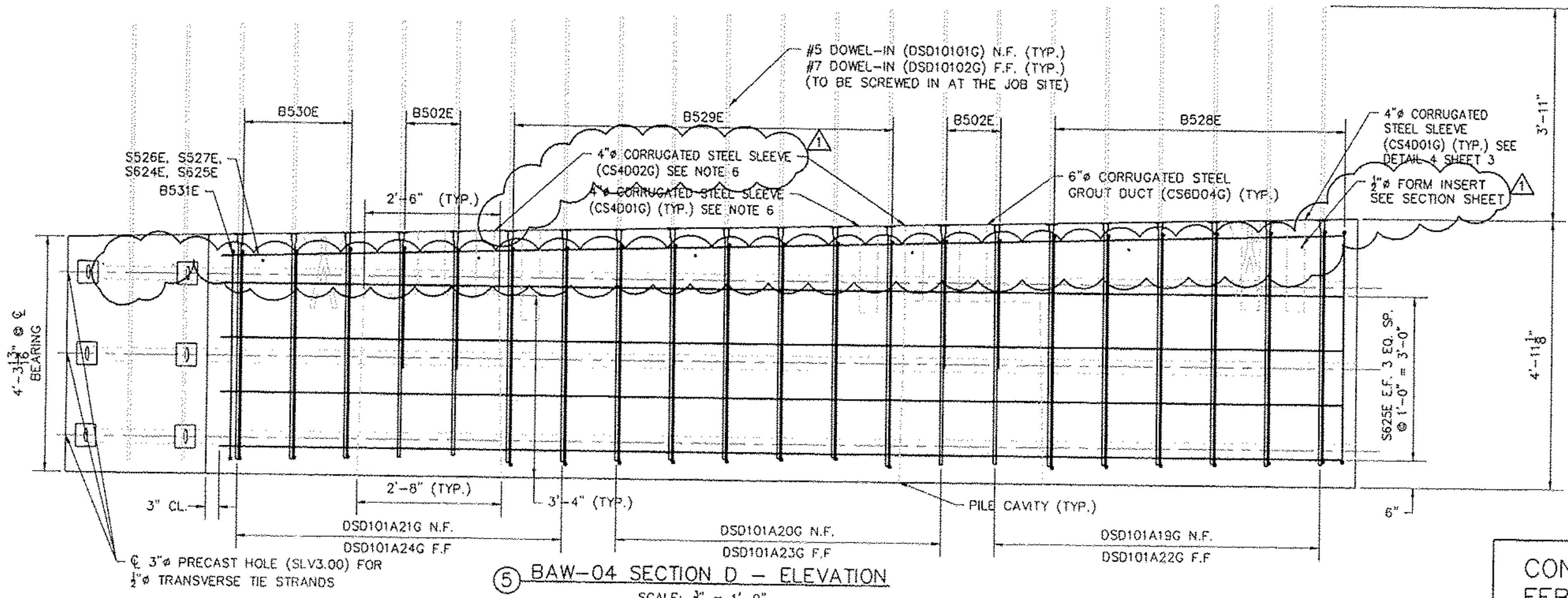
BY CPW DATE 3/28/11



④ BAW-04 REINF. LAYOUT PLAN
SCALE: 3/8" = 1'-0"

GENERAL NOTES:

1. SEE PLAN SHEETS 1, 2, & 3 FOR PLAN AND DETAILS.
2. ALL ABUTMENT PILE CAPS ARE LABELED AS FOLLOWS: PRODUCT TYPE-IDENTIFICATION NUMBER-SEQUENCE NUMBER.
3. MARK BAW-04 "SOUTH END", FOLLOWED BY THE CORRESPONDING BEAM LABEL.
4. FABRICATOR IS TO MARK ABUTMENT CAP END WITHIN CLOSE PROXIMITY TO THE NOTED END.
5. LIGHT SANDBLAST MATCH-CAST END PRIOR TO SHIPMENT TO REMOVE ANY FORM OIL, GREASE, LAITANCE, ETC.
6. SEE SHEET 2 FOR SLEEVE LOCATIONS. 4" SLEEVES ARE LOCATION CRITICAL.



⑤ BAW-04 SECTION D - ELEVATION
SCALE: 3/8" = 1'-0"



CONSTRUCTION SET
FEBRUARY 18, 2011

REVISION NO.	REVISION DATE
1	MARCH 09, 2011
Hoyle, Tanner & Associates, Inc.	
125 College Street, 4th Floor Burlington, VT 05401 Tel: (802) 860-1331 • Fax: (802) 860-6499 • www.hoyletanner.com © Copyright 2011 Hoyle, Tanner & Associates, Inc.	
DRAWN BY: APN	DATE: FEBRUARY 2011
CHECKED BY: GHS	PROJECT NO: 122435.00
PRECAST CONCRETE PRODUCTS TEL: (802) 442-4416 FAX: (802) 442-4719	
CHESTER, VT VT 103 BRIDGE #9	
PROJECT NO.: BRF 025-1 (37)	
SHEET 10 OF 15	