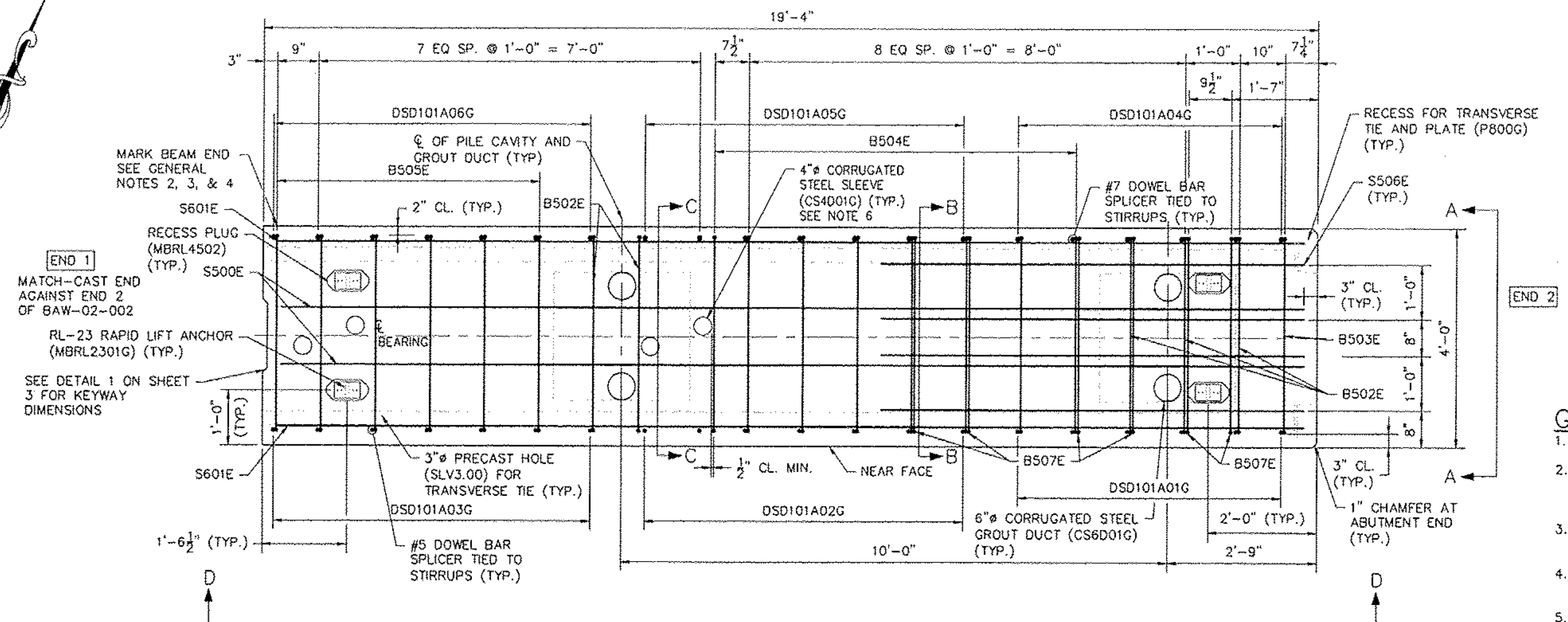


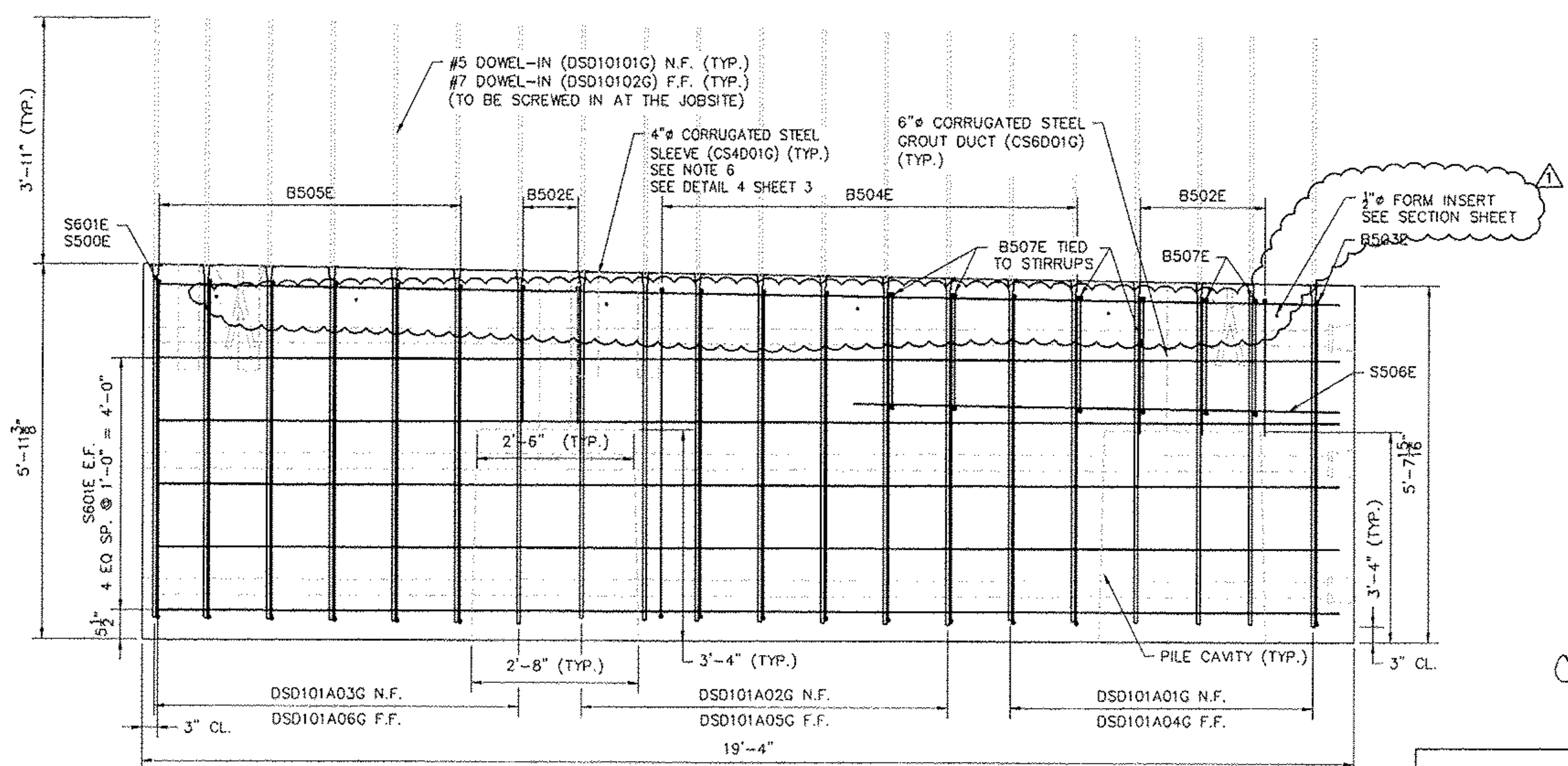


RECEIVED  
 CK'D BY JSS OK'D BY RKY  
 MAR 11 2011  
 RESUBMIT \_\_\_\_\_ APPROVED   
 BY CPW DATE 3/28/11



4 BAW-03 REINF. LAYOUT PLAN  
 SCALE: 1/4" = 1'-0"

- GENERAL NOTES:**
1. SEE PLAN SHEETS 1, 2, & 3 FOR PLAN AND DETAILS.
  2. ALL ABUTMENT PILE CAPS ARE LABELED AS FOLLOWS: PRODUCT TYPE-IDENTIFICATION NUMBER-SEQUENCE NUMBER.
  3. MARK BAW-03 "NORTH END", FOLLOWED BY THE CORRESPONDING BEAM LABEL.
  4. FABRICATOR IS TO MARK ABUTMENT PILE CAP END WITHIN CLOSE PROXIMITY TO THE NOTED END.
  5. LIGHT SANDBLAST MATCH-CAST END PRIOR TO SHIPMENT TO REMOVE ANY FORM OIL, GREASE, LAITANCE, ETC.
  6. SEE SHEET 1 FOR SLEEVE LOCATIONS. 4" SLEEVES ARE LOCATION CRITICAL.



5 BAW-03 SECTION D - ELEVATION  
 SCALE: 1/4" = 1'-0"

REVISION NO.	REVISION DATE
1	MARCH 09, 2011

**Hoyle, Tanner & Associates, Inc.**  
 125 College Street, 4th Floor Burlington, VT 05401  
 Tel: (802)860-1331 Fax: (802)860-6400 www.hoyletanner.com  
 © Copyright 2011 Hoyle, Tanner & Associates, Inc.

DRAWN BY: A/N DATE: FEBRUARY 2011  
 CHECKED BY: LHS PROJECT NO.: 122435.00

PRECAST CONCRETE PRODUCTS  
 161 (802) 442-4410 FAX: (802) 442-4719

**CHESTER, VT**  
 VT 103  
 BRIDGE #9

PROJECT NO.: BRF 025-1 (37)  
**SHEET 8 OF 15**

CONSTRUCTION SET  
 FEBRUARY 18, 2011