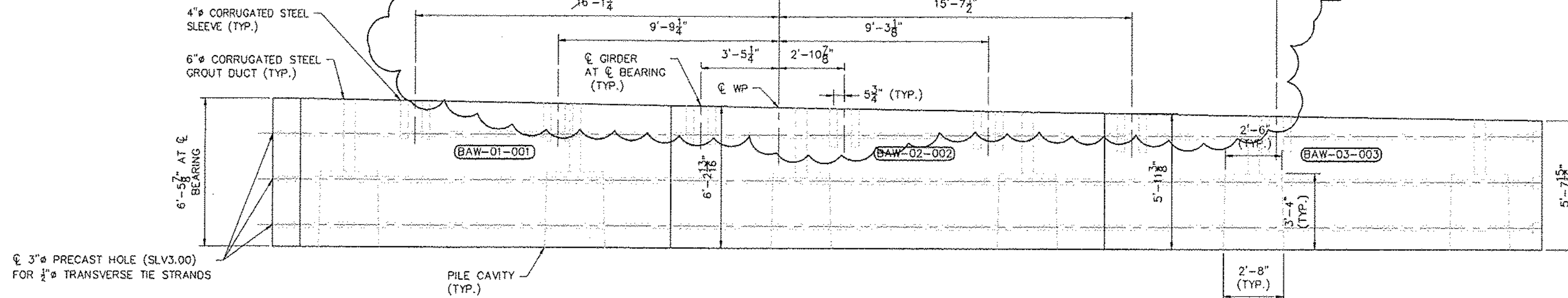


ABUTMENT #1 PILE CAP PLAN

SCALE: 3/8" = 1'-0"



ABUTMENT #1 PILE CAP ELEVATION

SCALE: 3/8" = 1'-0"

**GENERAL NOTES:**

1. PANELS SHALL BE LIFTED UTILIZING A MINIMUM SLING ANGLE = 60°.
2. CONTRACTOR TO ENSURE RIGGING DURING LIFTING OPERATIONS ENGAGES ALL FOUR LIFT ANCHORS.

**SUGGESTED SEQUENCE OF CONSTRUCTION:**

1. PREPARE AND GRADE FOUNDATION TO REQUIRED ELEVATION.
2. DRIVE PILES. THE PILES' TOP SHALL BE WITHIN 3" OF PLAN LOCATION.
3. PLACE PRECAST ABUTMENTS. APPLY A SLOW SETTING EPOXY TO THE MATING ENDS AT MATCH-CAST JOINT. THE EPOXY SHOULD BE APPLIED PER MANUFACTURERS' RECOMMENDATIONS.
4. INSTALL TRANSVERSE STRANDS. USE A CALIBRATED JACK TO TENSION TO 3 KIPS.
5. ONCE EPOXY HAS CURED PER MANUFACTURERS' RECOMMENDATIONS APPLY FINAL POST-TENSIONING FORCE.
6. FINAL JACKING FORCE PER STRAND IS 33 KIPS. STRESS POST-TENSIONING STRANDS USING A CALIBRATED JACK OPERATED BY QUALIFIED PERSONNEL WITH PREVIOUS EXPERIENCE IN POST-TENSIONING.
9. PLACE AND SECURE THE 9" WIDE SEAL WRAP AT EACH JOINT, ABUTMENT, IN THE BACK OF THE STEM. DAMPPROOF AND THEN BACKFILL AS RECOMMENDED.
10. VERIFY ABUTMENT ELEVATIONS AND GROUT PILE CAVITIES.
11. BACKFILL ABUTMENTS IN COORDINATION WITH RETAINING WALL BACKFILL.

STRUCTURES  
COPY

RECEIVED

OK'D BY JSS OK'D BY RSY

MAR 11 2011

RESUBMIT \_\_\_\_\_ APPROVED

BY CPW DATE 3/23/11



CONSTRUCTION SET  
FEBRUARY 18, 2011

REVISION NO. 1	REVISION DATE MARCH 09, 2011
<b>Hoyle, Tanner &amp; Associates, Inc.</b>	
<small>125 College Street, 4th Floor Burlington, VT 05401 Tel (802)860-1331 • Fax (802)860-6498 • www.hoyletanner.com © Copyright 2011 Hoyle, Tanner &amp; Associates, Inc.</small>	
<small>DRAWN BY: APN</small>	<small>DATE: FEBRUARY 2011</small>
<small>CHECKED BY: UHS</small>	<small>PROJECT NO.: 122435.00</small>
<small>PRECAST CONCRETE PRODUCTS TEL: (802) 442-4418 FAX: (802) 442-4719</small>	
<b>CHESTER, VT</b> VT 103 BRIDGE #9	
PROJECT NO.: BRF 025-1 (37)	
<b>SHEET 1 OF 15</b>	