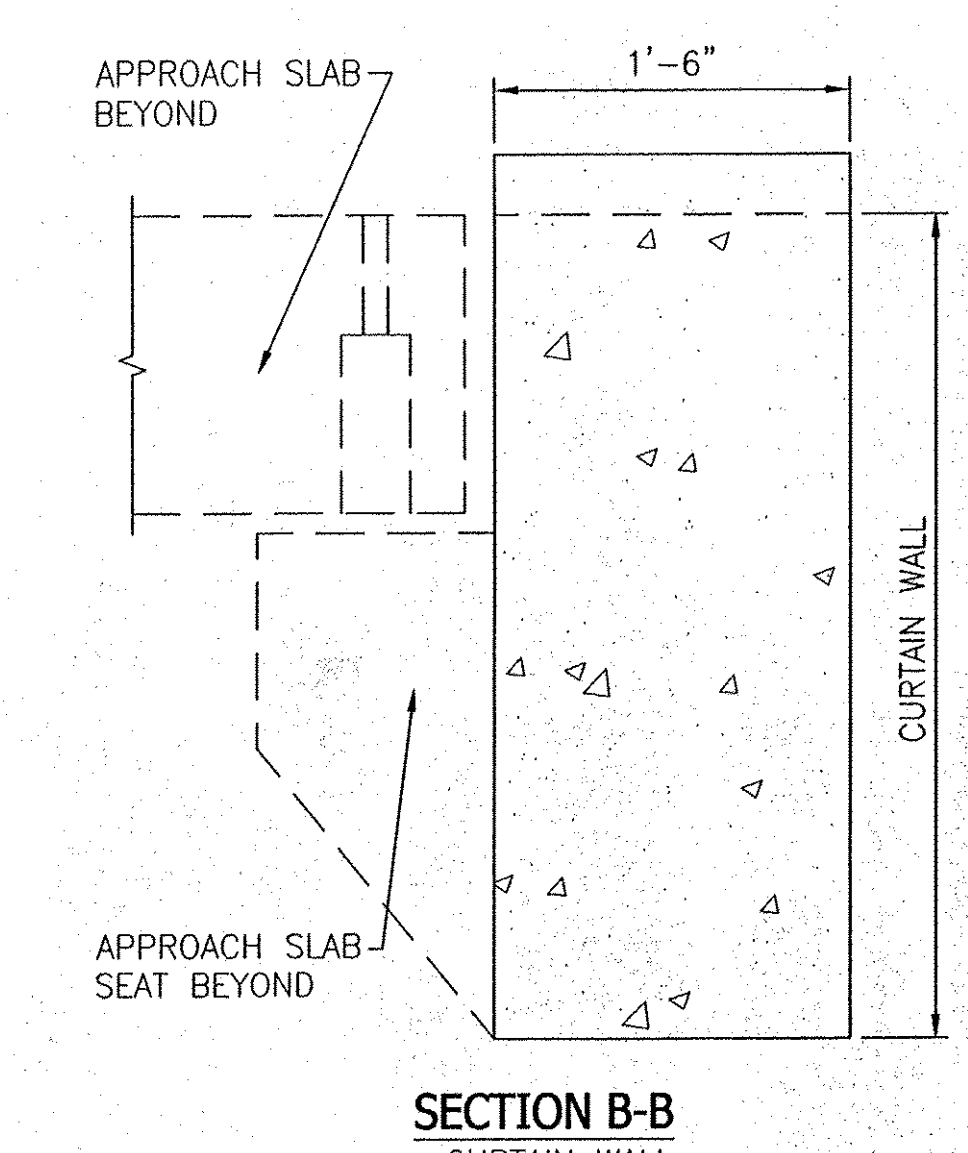
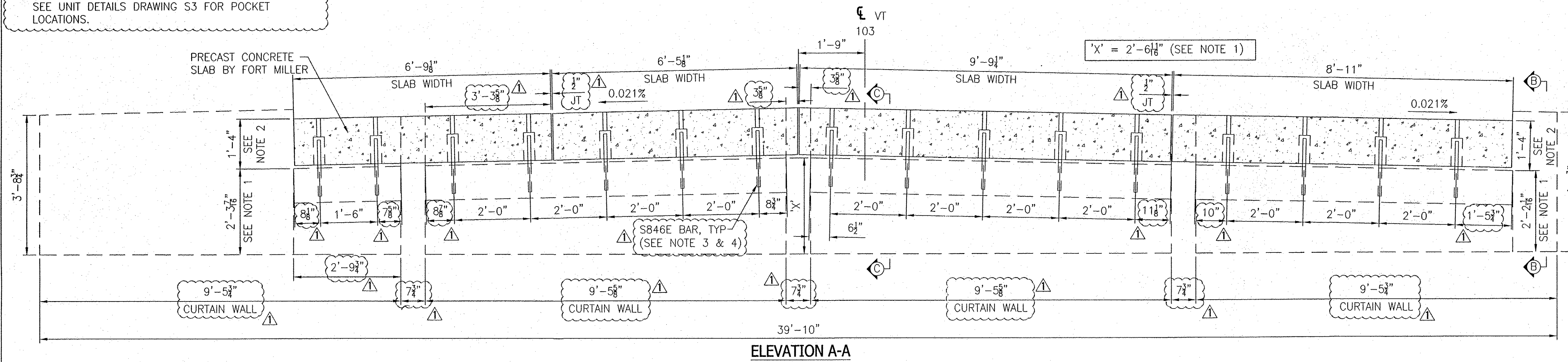
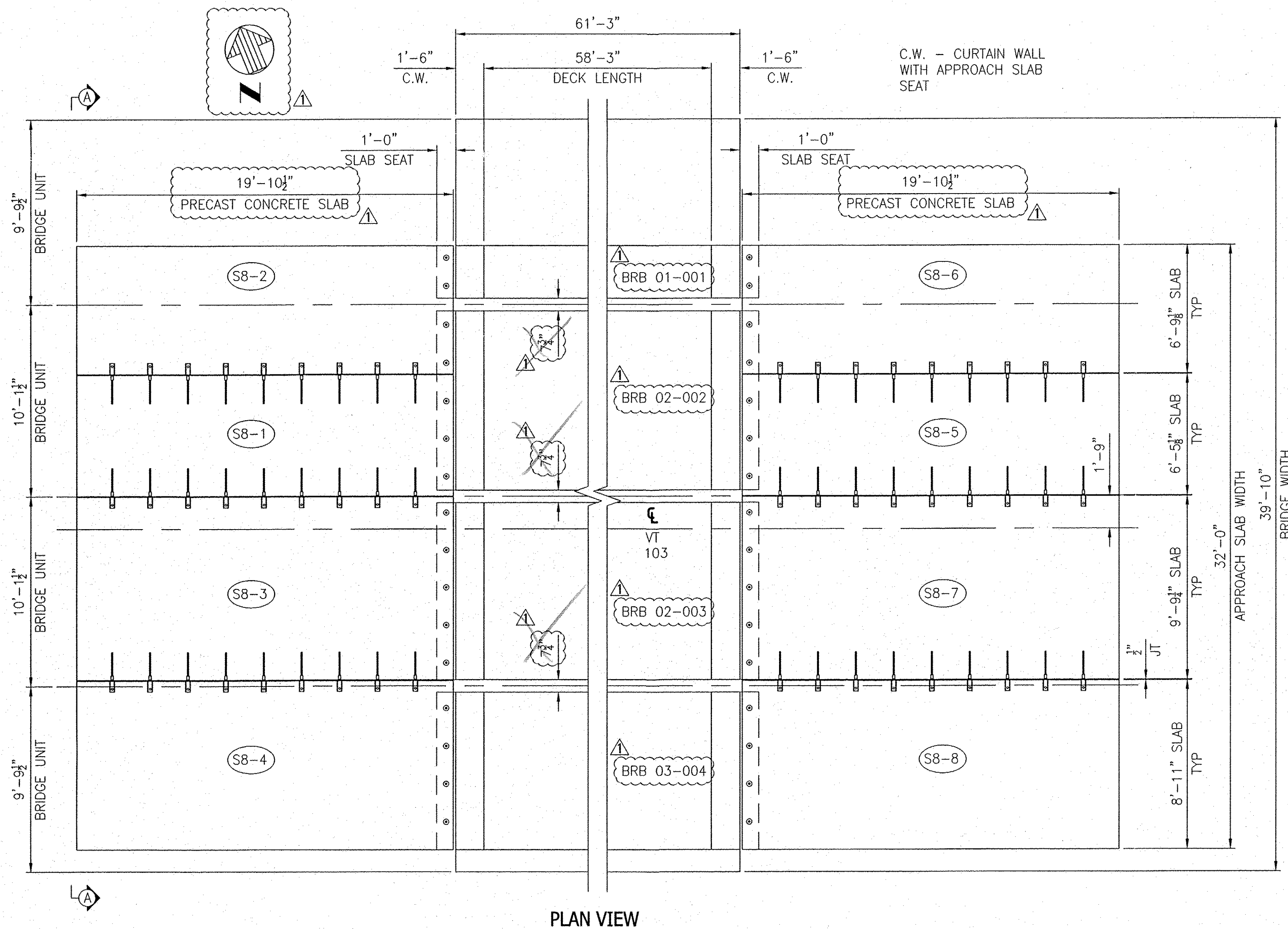
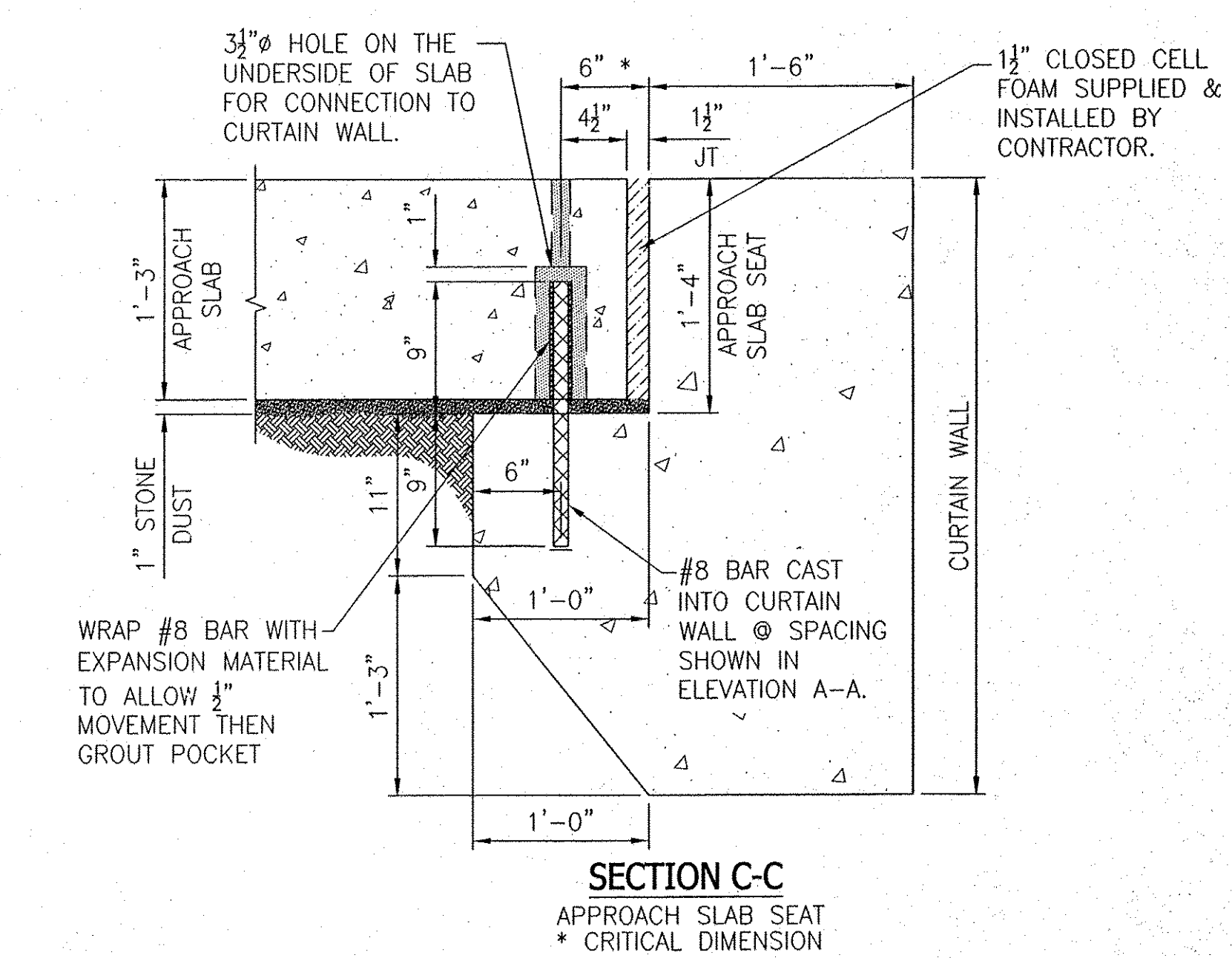


NOTES:

1. THE CURTAIN WALL APPROACH SLAB SEAT TO BE PARALLEL WITH THE TOP OF THE NEXT BEAM DECK.
2. THE APPROACH SLAB SEAT NEEDS TO BE 1'-4" DEEP FOR A 1'-3" APPROACH SLAB. SECTION C-C SHOWS THE REQUIRED SEAT DIMENSIONS.
3. ALL S846E BARS PROTRUDING FROM CURTAIN WALL TO BE PERPENDICULAR TO APPROACH SEAT.
4. DIMENSIONS SHOWN FOR THE S846E BARS ARE TAKEN ON THE CURTAIN WALLS NOT PRECAST SLABS. SEE UNIT DETAILS DRAWING S3 FOR POCKET LOCATIONS.



SETTING SEQUENCE:
 WEST SIDE: SEQUENTIALLY S8-1 THRU S8-4 OR S8-1, S8-3, THEN S8-2 OR S8-4 NEXT.
 EAST SIDE: SEQUENTIALLY S8-5 THRU S8-8 OR S8-5, S8-7, THEN S8-6 OR S8-8 NEXT.



*SUPER-SLAB® IS PROTECTED UNDER AT LEAST ONE OF US PATENT NUMBERS; 6,607,329 B2, 6,663,315, 6,709,192 AND 6,899,489 AND OTHER U.S. AND FOREIGN PATENTS PENDING. SUPER-SLAB® IS A REGISTERED US TRADEMARK OWNED BY THE FORT MILLER CO., INC.

RECEIVED
 APR 0 4 2011
 APPROVED BY: [Signature]
 DATE: 4/1/11

3-28-11	TDS	PER ENG. COMMENTS, ADDED NOTES & DIMENSIONS	
NO.	DATE	BY	REVISIONS
PROJECT LOCATION: TOWN OF CHESTER - ROUTE 103		F.M. JOB NO. 12511	
PROJECT: BR 025-1(28) - BRIDGE #8		DATE: 2-21-11	
SUBJECT: PLAN, SECTION & DETAILS		DRN. BY: TDS	
CONTRACTOR: COLD RIVER BRIDGES, LLC.		CHK. BY: SDH	
CONTRACTOR ADDRESS: PO BOX 1076 WALPOLE, NH 03608		SCALE: NONE	
ENGINEER/ARCHITECT: VAOT		SHEET NO. 2 OF 3	
		DWG. NO. S2	