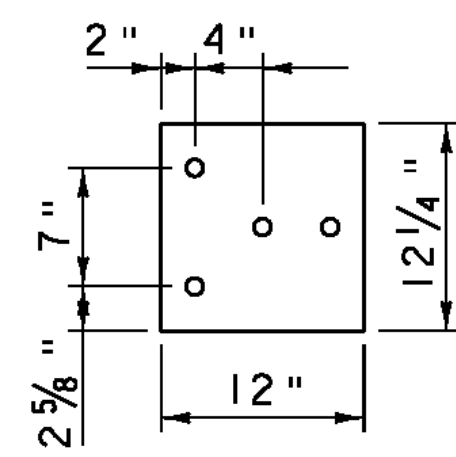
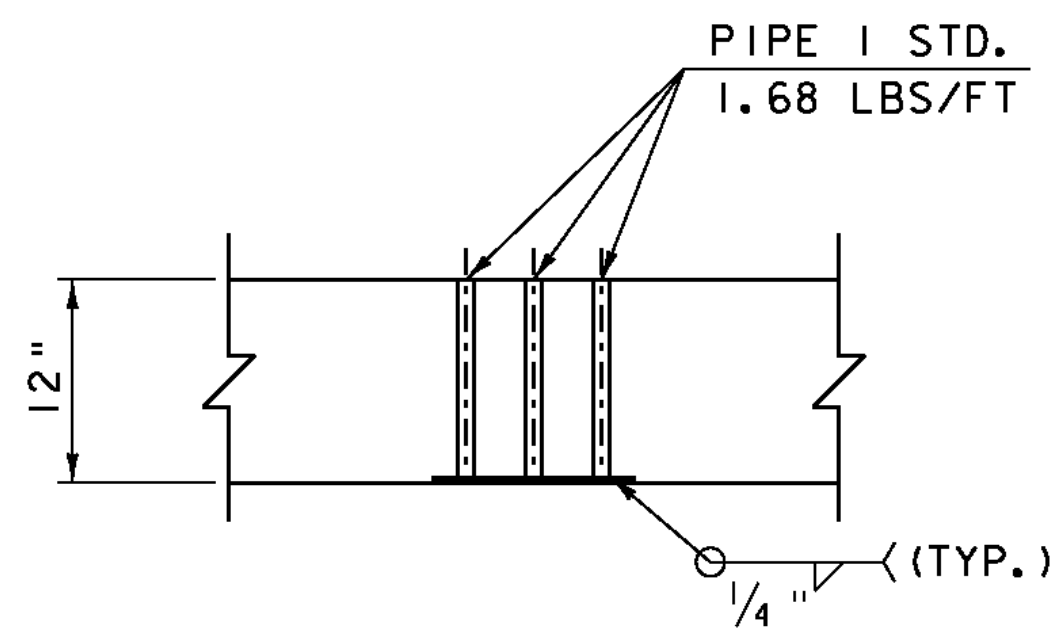
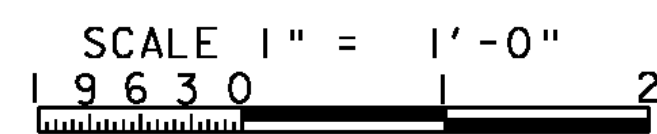


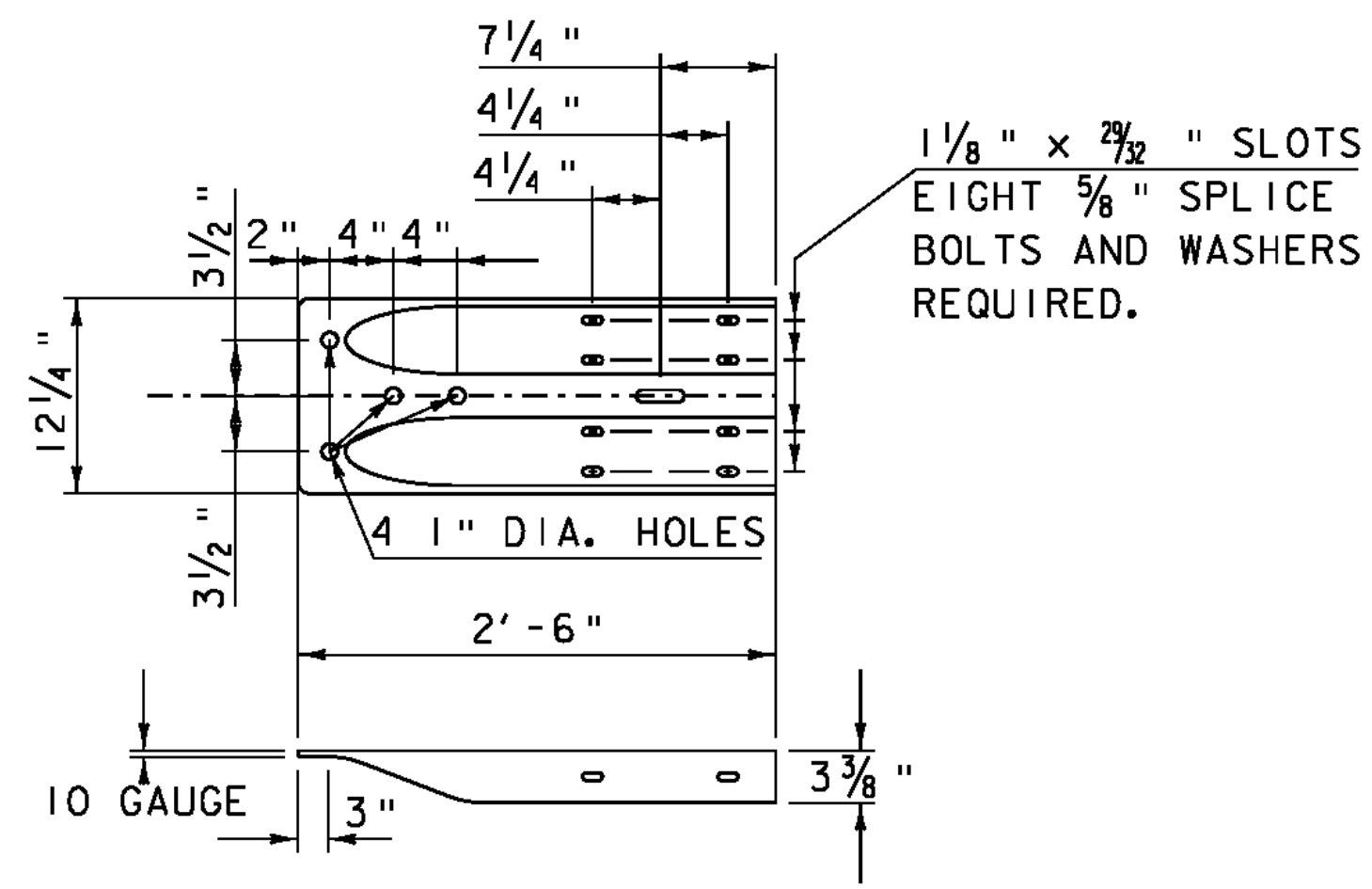
SECTION A-A
SCALE 1/2" = 1'-0"



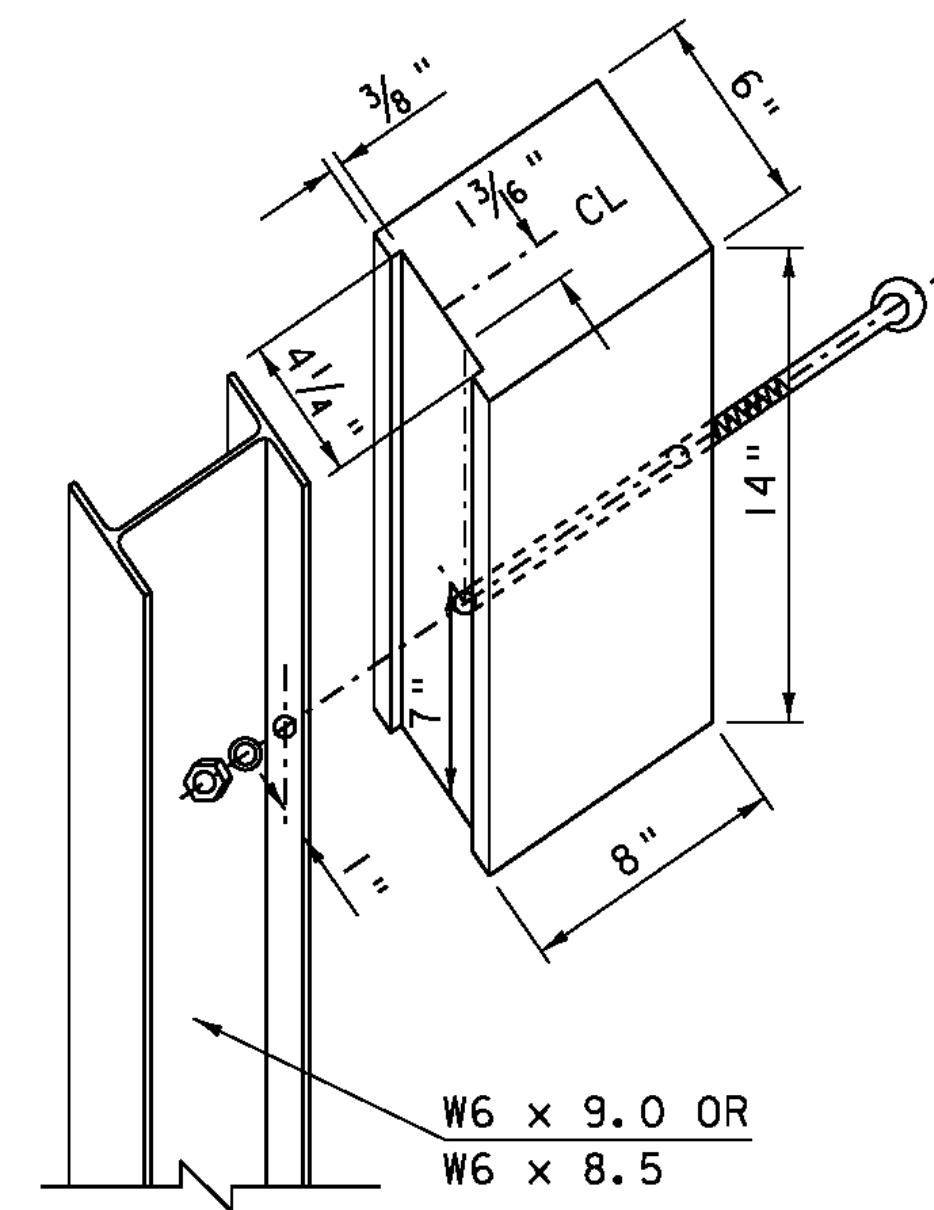
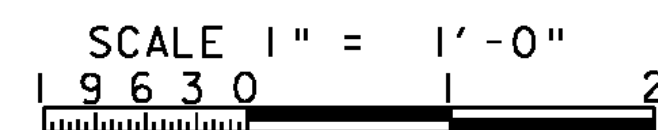
CONNECTION PLATE
DETAIL - ELEVATION



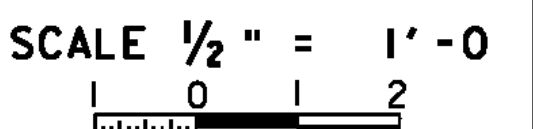
CONNECTION PLATE
DETAIL - PLAN



TERMINAL CONNECTOR



BLOCKOUT TO
POST DETAIL
NTS



GENERAL NOTES

1. A COMPOSITE MATERIAL POST AND/OR BLOCKOUT FROM THE APPROVED PRODUCTS LIST MAY BE SUBSTITUTED FOR A POST AND/OR BLOCKOUT OF SIMILAR DIMENSIONS.
2. REFER TO STANDARD DRAWINGS G-1 AND G-1D FOR ADDITIONAL DETAILS.
3. THE TERMINAL CONNECTOR SHALL BE INCLUDED IN THE BID PRICE FOR ITEM 900.620 "SPECIAL PROVISION (GUARDRAIL APPROACH SECTION TO CONCRETE BRIDGE RAILING) (TL-2)". THE CONNECTION PLATE SHALL BE INCLUDED IN THE BID PRICE FOR ITEM 900.640 "SPECIAL PROVISION (BRIDGE RAILING, TEXAS)".
4. ON THE SIDEWALK SIDE OF THE BRIDGE THE APPROACH RAIL HEIGHT SHALL TRANSITION FROM 2'-3" REFERENCED FROM THE SIDEWALK TO 2'-3" REFERENCED FROM GRADE IN 37'-6".

THE USE OF THIS RAILING IS RESTRICTED TO DESIGN SPEEDS OF 45 MPH OR LESS.

PROJECT NAME: CHESTER
PROJECT NUMBER: BRF 025-1(28)

FILE NAME: s84e061r-all.dgn
PROJECT LEADER: C.P.WILLIAMS
DESIGNED BY: R.S.YOUNG
TL-2 TRANSITION RAIL DETAILS

PLOT DATE: 20-SEP-2010
DRAWN BY: M.FESSEL
CHECKED BY: R.S.YOUNG
SHEET 39 OF 124