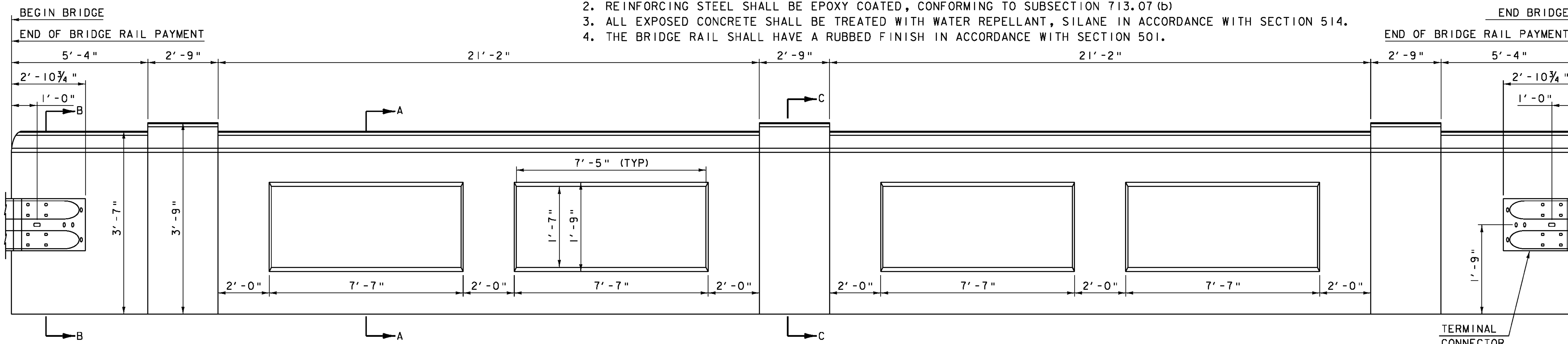
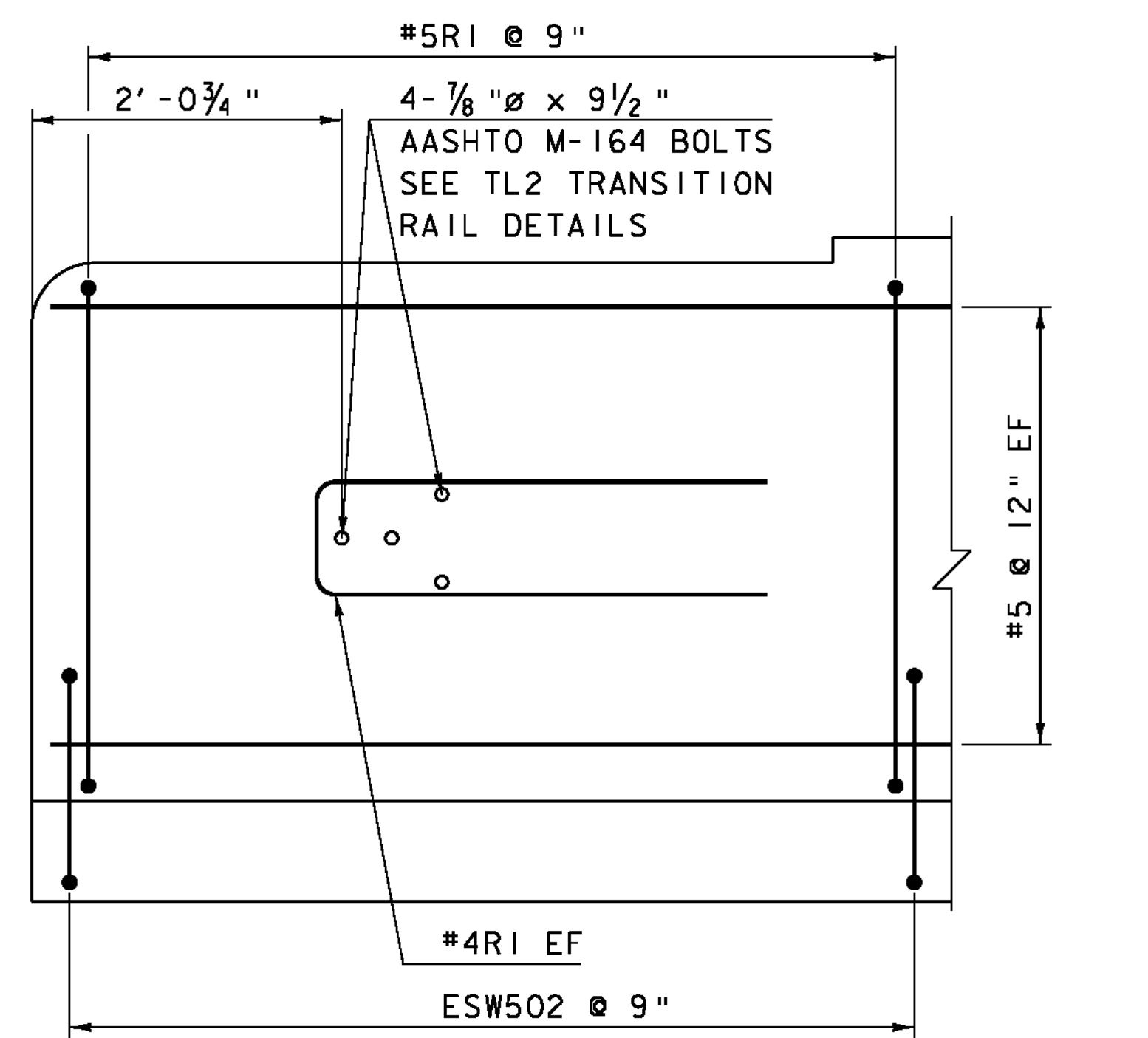


- NOTE: 1. BRIDGE RAIL SHALL BE PAID FOR UNDER ITEM 900.640 "SPECIAL PROVISION (BRIDGE RAILING, TEXAS)"  
 2. REINFORCING STEEL SHALL BE EPOXY COATED, CONFORMING TO SUBSECTION 713.07 (b)  
 3. ALL EXPOSED CONCRETE SHALL BE TREATED WITH WATER REPELLANT, SILANE IN ACCORDANCE WITH SECTION 514.  
 4. THE BRIDGE RAIL SHALL HAVE A RUBBED FINISH IN ACCORDANCE WITH SECTION 501.



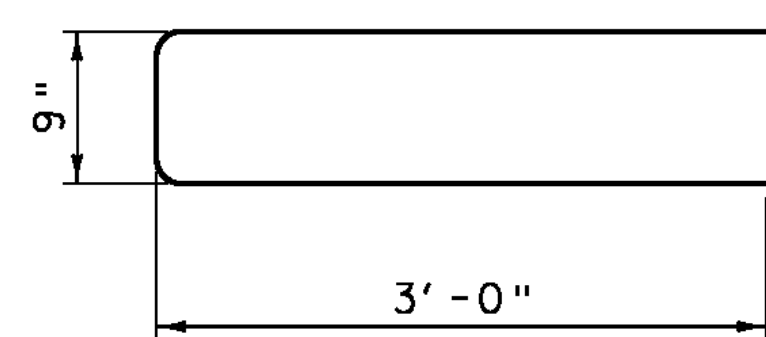
**ROADWAY ELEVATION OF RAIL**

SCALE: VERTICAL: 1" = 1'-0"  
 HORIZONTAL: 1/2" = 1'-0"



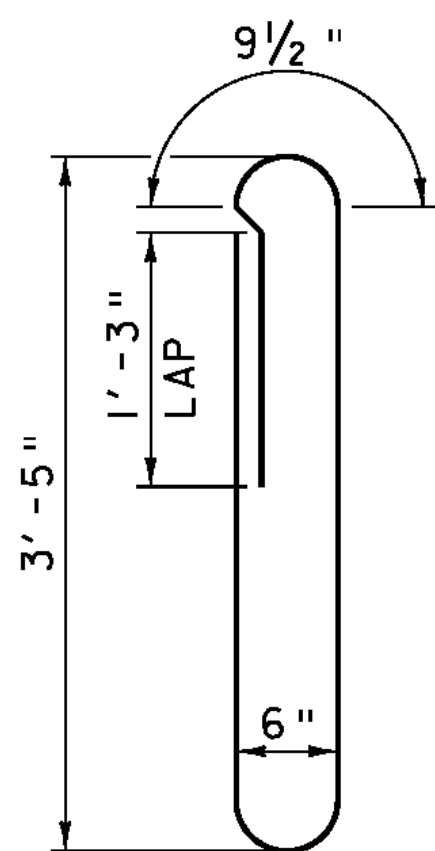
**TYPICAL REINFORCING PLACEMENT**

SCALE 1" = 1'-0"



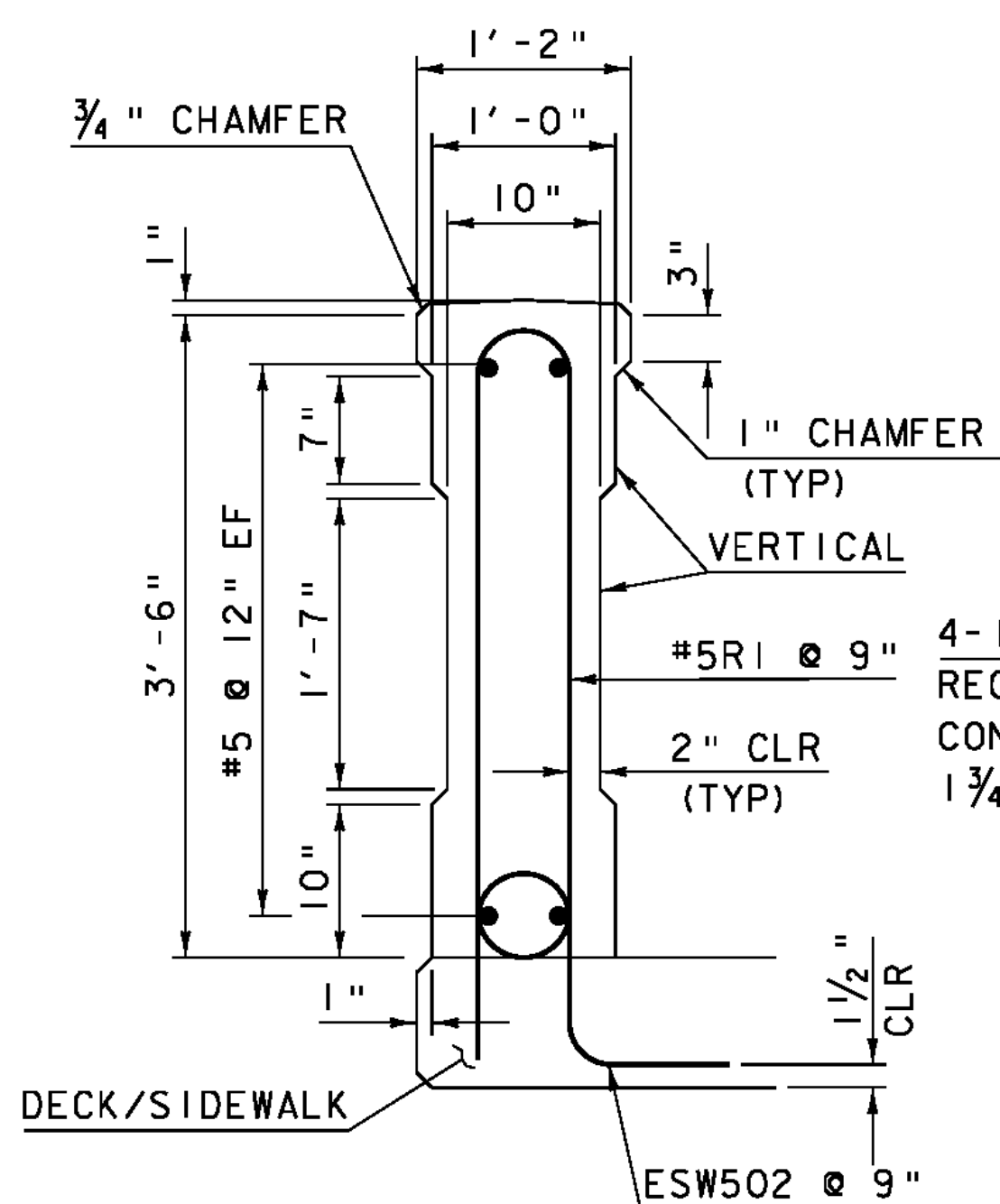
**BAR #4R1**

SCALE 1" = 1'-0"  
 8 - REQUIRED



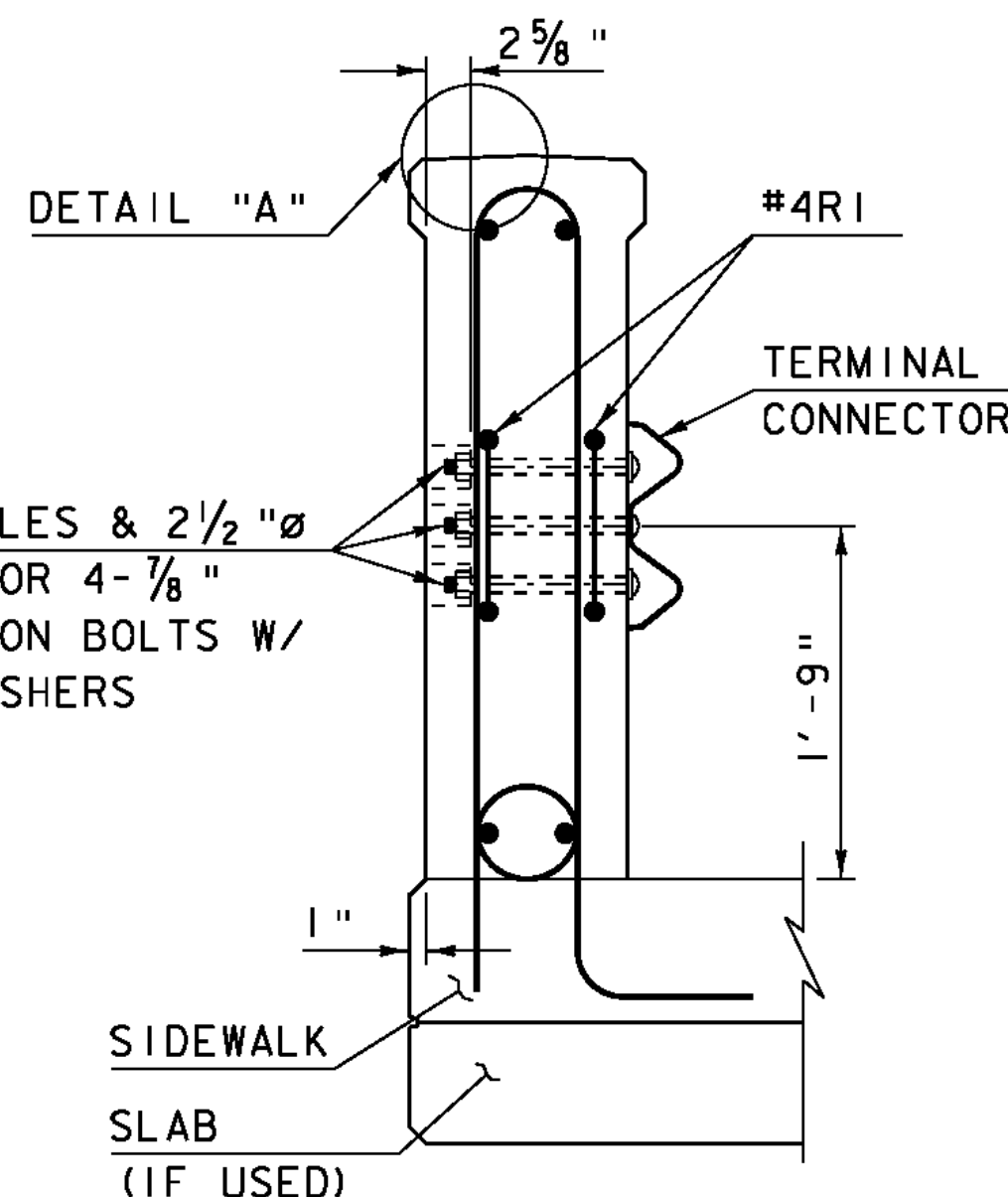
**BAR #5R1**

SCALE 1" = 1'-0"  
 164 - REQUIRED



**SECTION A-A**

SCALE 1" = 1'-0"



**SECTION B-B**

SCALE 1" = 1'-0"

HOLES AND RECESSES ARE TO BE FORMED OR CORED, PERCUSSION DRILLING IS NOT PERMITTED.

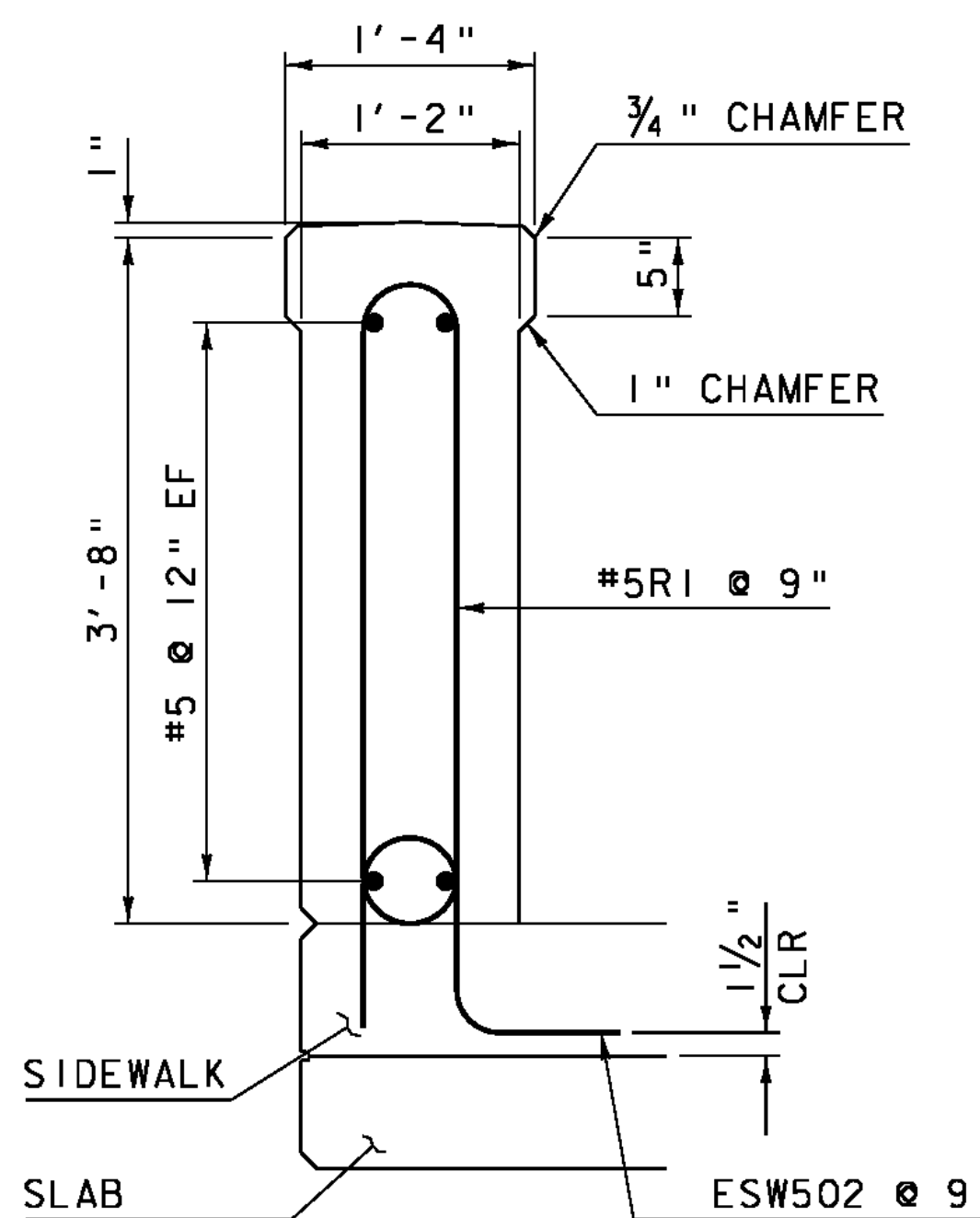
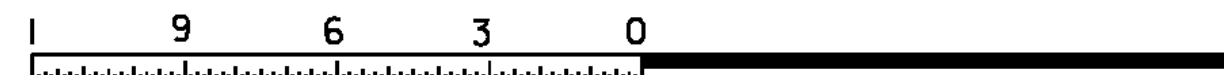
SCALE 1/2" = 1'-0"



SCALE 1" = 1'-0"

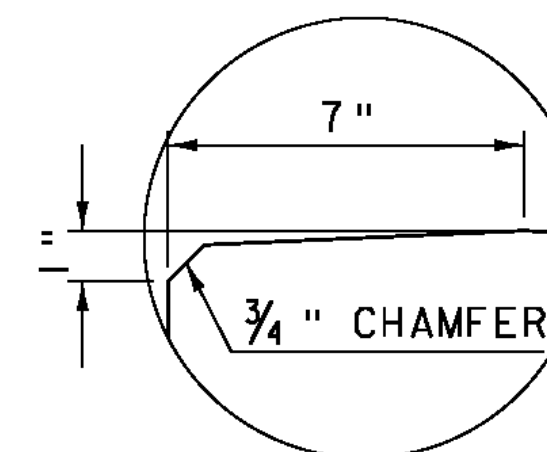


SCALE 3" = 1'-0"



**SECTION C-C**

SCALE 1" = 1'-0"



**DETAIL "A"**

SCALE 3" = 1'-0"

**NOTE:**

- NF = NEAR FACE
- FF = FAR FACE
- EF = EACH FACE
- ▲ = CUT TO FIT IN FIELD
- 3" CLEAR, UNLESS OTHERWISE SPECIFIED ON THE PLANS.
- 2'-2" BAR LAP UNLESS OTHERWISE SPECIFIED ON THE PLANS.

PROJECT NAME: CHESTER  
 PROJECT NUMBER: BRF 025-1(28)

FILE NAME: 84e061\84e061rail.dgn  
 PROJECT LEADER: C.P.WILLIAMS  
 DESIGNED BY: R.S.YOUNG  
 BRIDGE 8 BRIDGE RAIL DETAIL

PLOT DATE: 20-SEP-2010  
 DRAWN BY: D.D.BEARD  
 CHECKED BY: E.R.CHARBONNEAU  
 SHEET 38 OF 124