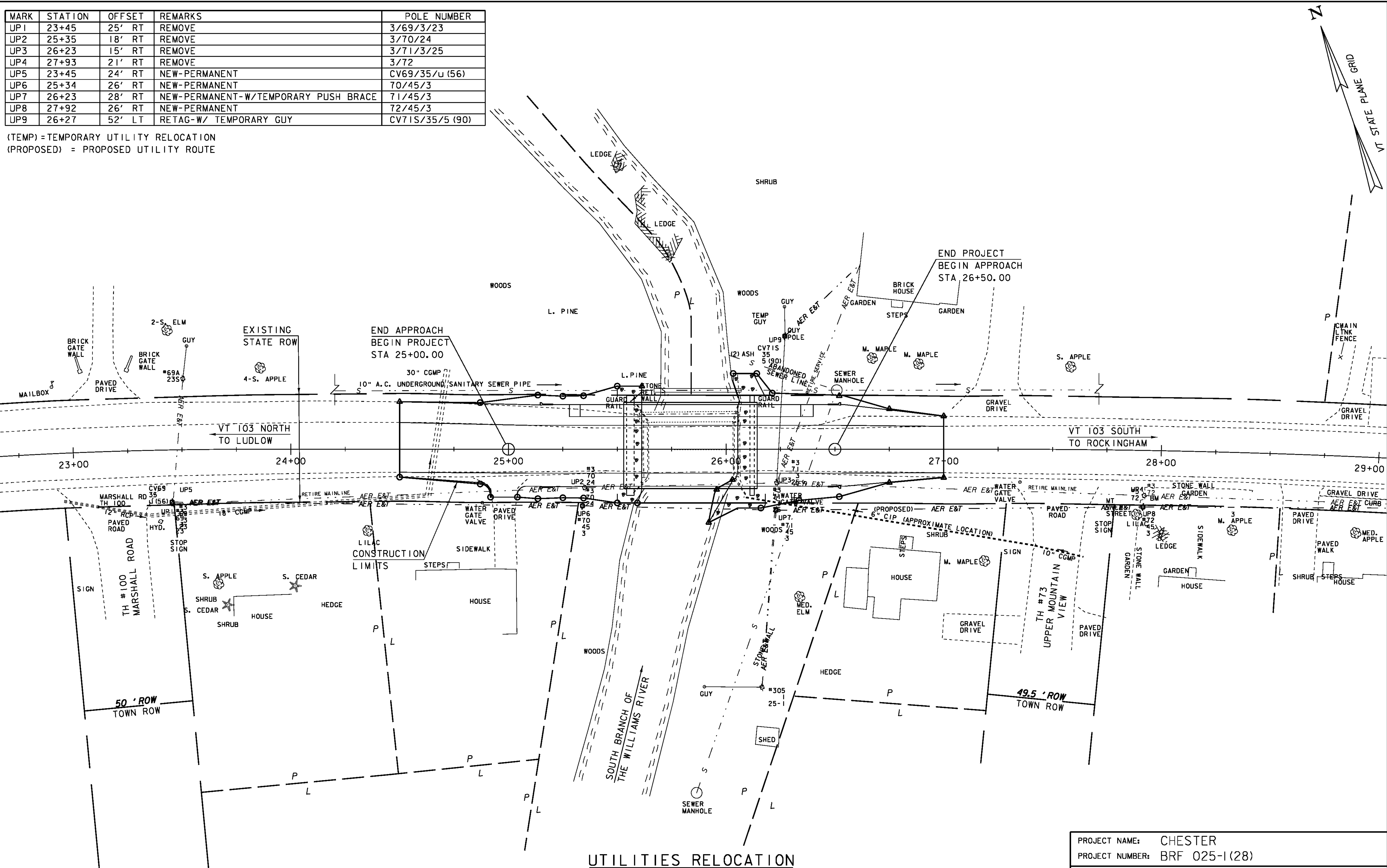


| MARK | STATION | OFFSET | REMARKS | POLE NUMBER |
|------|---------|--------|--------------------------------------|-----------------|
| UP1 | 23+45 | 25' RT | REMOVE | 3/69/3/23 |
| UP2 | 25+35 | 18' RT | REMOVE | 3/70/24 |
| UP3 | 26+23 | 15' RT | REMOVE | 3/71/3/25 |
| UP4 | 27+93 | 21' RT | REMOVE | 3/72 |
| UP5 | 23+45 | 24' RT | NEW-PERMANENT | CV69/35/U (56) |
| UP6 | 25+34 | 26' RT | NEW-PERMANENT | 70/45/3 |
| UP7 | 26+23 | 28' RT | NEW-PERMANENT-W/TEMPORARY PUSH BRACE | 71/45/3 |
| UP8 | 27+92 | 26' RT | NEW-PERMANENT | 72/45/3 |
| UP9 | 26+27 | 52' LT | RETAG-W/ TEMPORARY GUY | CV71S/35/5 (90) |

(TEMP) = TEMPORARY UTILITY RELOCATION
 (PROPOSED) = PROPOSED UTILITY ROUTE



UTILITIES RELOCATION

SCALE 1" = 20'-0"
 20 0 20

| | | | |
|-----------------|------------------------------|-------------------------------|-----------------|
| PROJECT NAME: | CHESTER | PLOT DATE: | 20-SEP-2010 |
| PROJECT NUMBER: | BRF 025-1(28) | DRAWN BY: | M.FESSEL |
| FILE NAME: | 84e061/Str/bdr_utilities.dgn | CHECKED BY: | R.S.YOUNG |
| PROJECT LEADER: | C.P.WILLIAMS | BRIDGE 8 UTILITIES RELOCATION | SHEET 21 OF 124 |