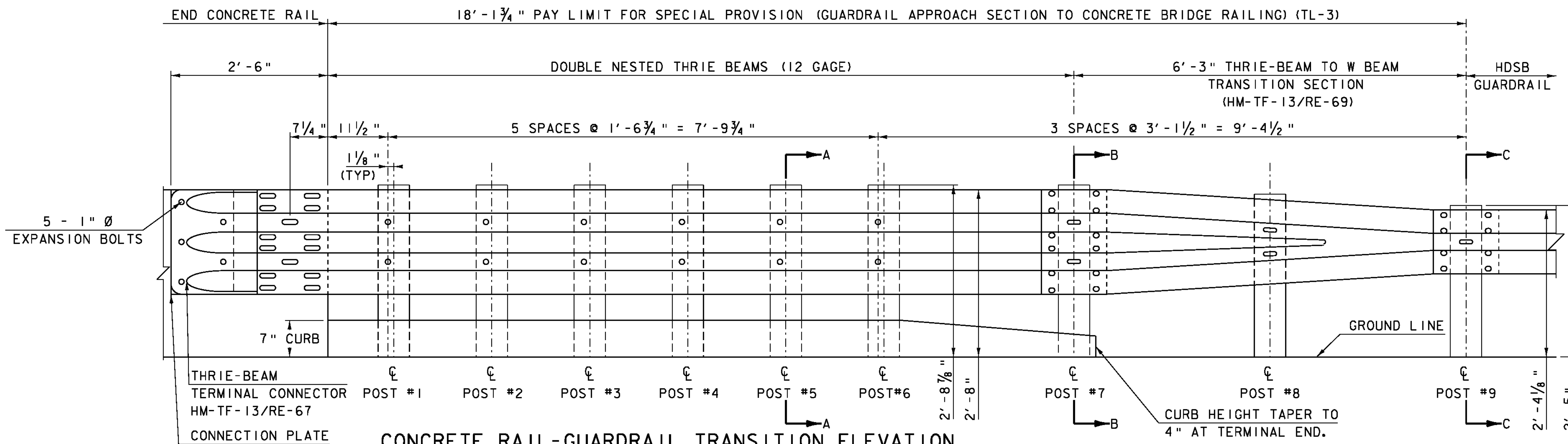


* THIS DIMENSION WILL BE 1'-11 1/2" ON WINGWALL #3
 ** THIS DIMENSION WILL BE 1'-9 1/2" ON WINGWALL #3

CONCRETE RAIL-GUARDRAIL TRANSITION PLAN

SCALE 1" = 1'-0"



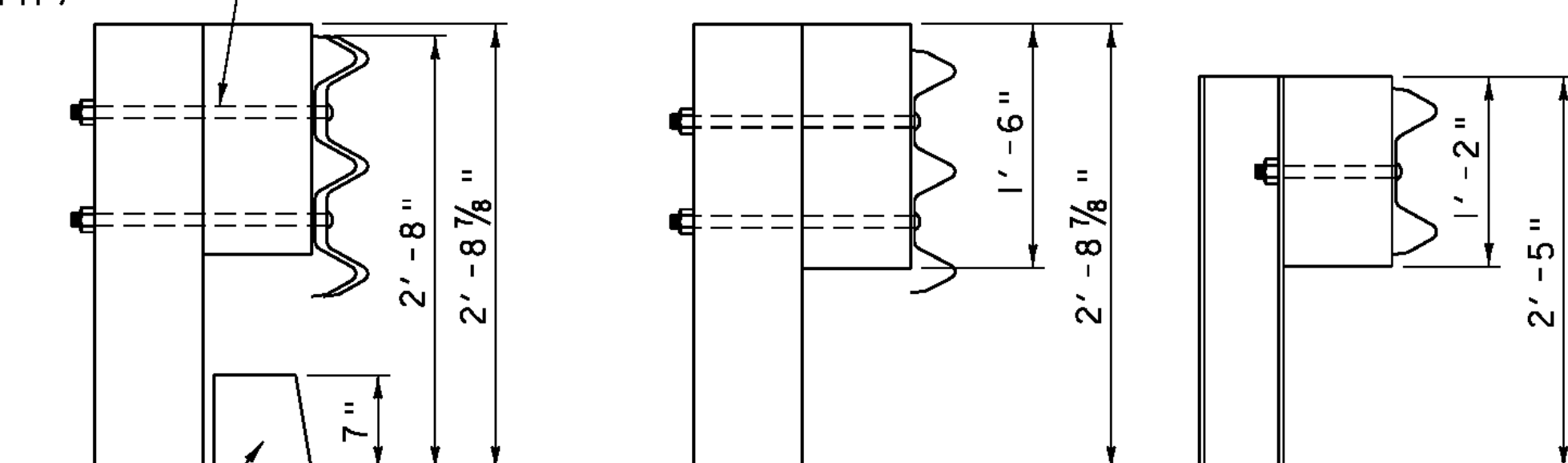
CONCRETE RAIL-GUARDRAIL TRANSITION ELEVATION

SCALE 1" = 1'-0"

NOTE:

1. THRIE-BEAM TERMINAL CONNECTOR SHALL BE INCLUDED IN THE UNIT BID PRICE OF ITEM 900.620 SPECIAL PROVISION (GUARDRAIL APPROACH SECTION TO CONCRETE BRIDGE RAILING) (TL3). THE CONNECTION PLATE AND PIPE SHALL BE INCLUDED IN THE UNIT BID PRICE OF ITEM 900.640 SPECIAL PROVISION (BRIDGE RAILING, GALVANIZED STEEL TUBING/CONCRETE COMBINATION).
2. UNLESS OTHERWISE DIRECTED BY THE ENGINEER, A COMPOSITE MATERIAL POST AND/OR BLOCKOUT FROM THE APPROVED PRODUCTS LIST MAY BE SUBSTITUTED FOR A POST AND/OR BLOCKOUT OF SIMILAR DIMENSIONS.
3. REFER TO STANDARD DRAWINGS G-1 AND G-1D FOR ADDITIONAL DETAILS.

5/8" POST BOLTS (A307) WITH 1 3/4" O.D. WASHER AND NUT. 7/8" DIA. HOLE IN POST AND SPACER (MIN.) (TYP)



PRECAST REINFORCED CONCRETE CURB, TYPE B (SEE STD C-10)

SECTION A-A

SECTION B-B

SECTION C-C

SCALE 1" = 1'-0"
 1 9 6 3 0

PROJECT NAME: CHESTER
 PROJECT NUMBER: BRF 025-1(37)

FILE NAME: s95b168r.dgn
 PROJECT LEADER: C.P.WILLIAMS
 DESIGNED BY: R.S.YOUNG
 TL-3 TRANSITION RAIL DETAILS

PLOT DATE: 20-SEP-2010
 DRAWN BY: D.D.BEARD
 CHECKED BY: H.I.SALLS
 SHEET 102 OF 124