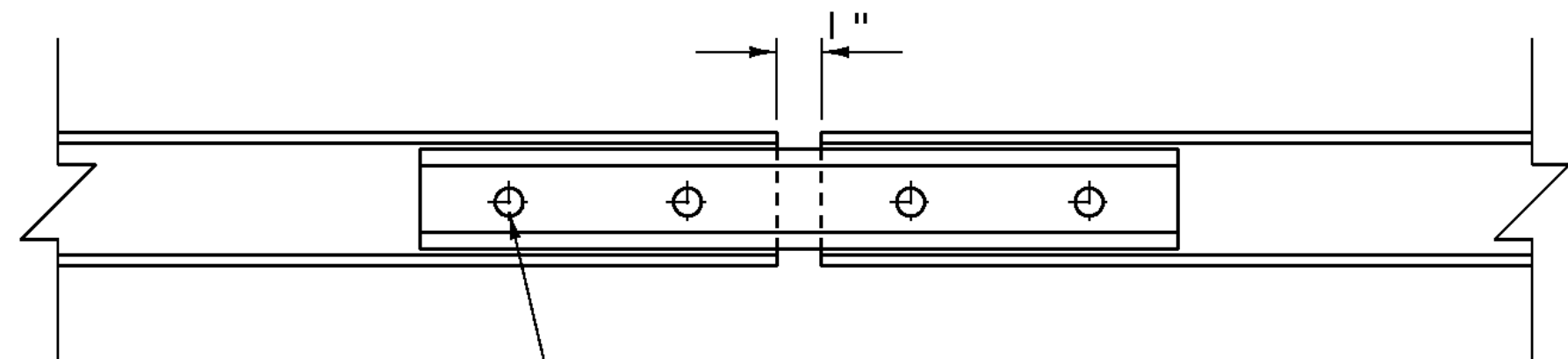
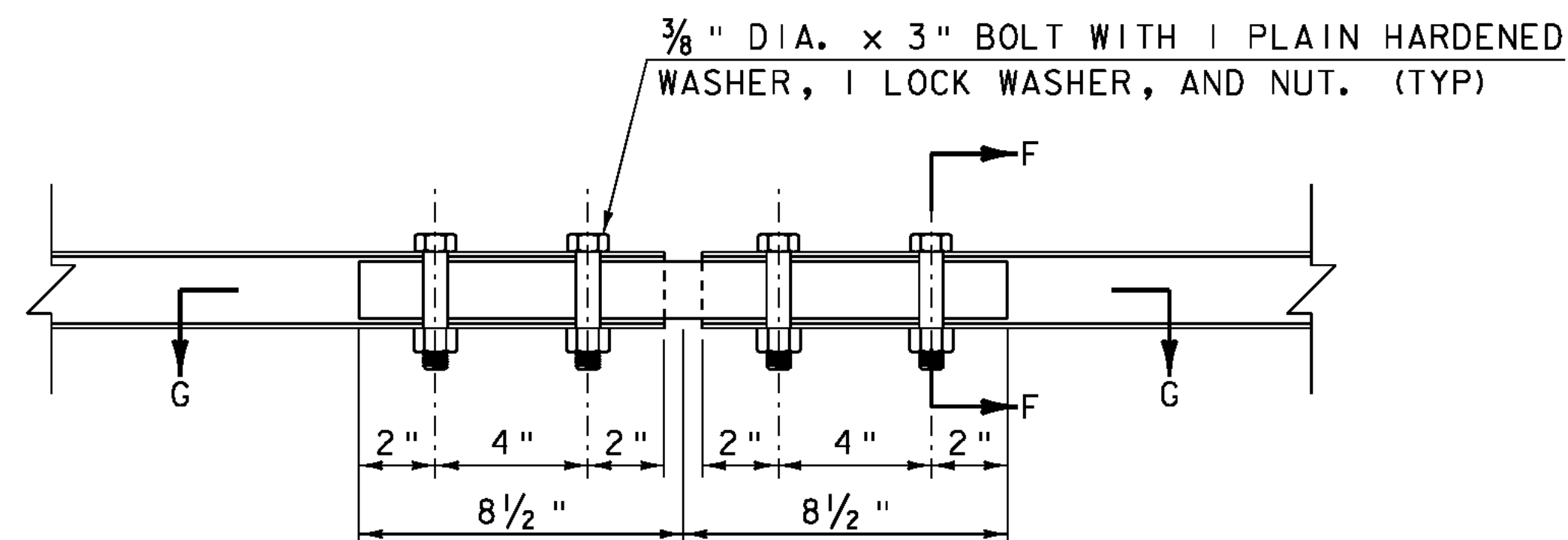


**TOP RAIL SPLICE DETAIL**

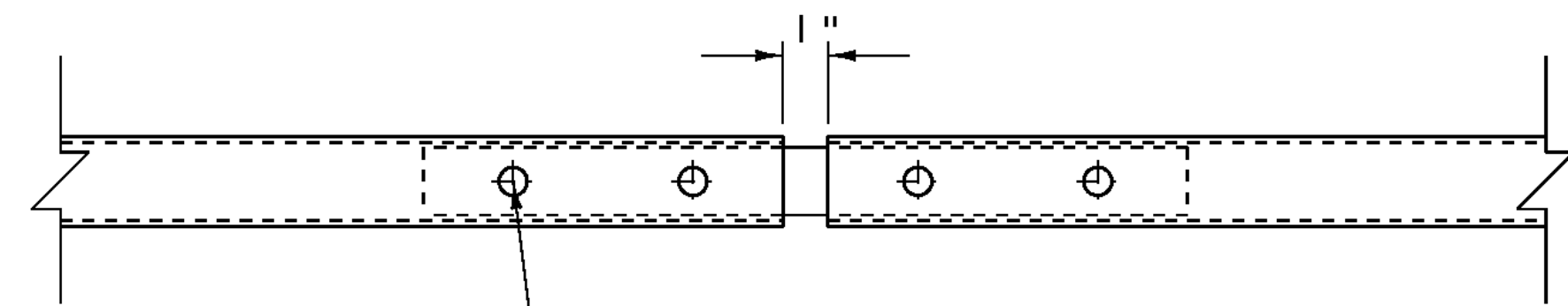


1/2" DIA. HOLE IN SPLICE ELEMENT AND HSS 4" x 3" x 1/4". (TYP)

**SECTION E-E**

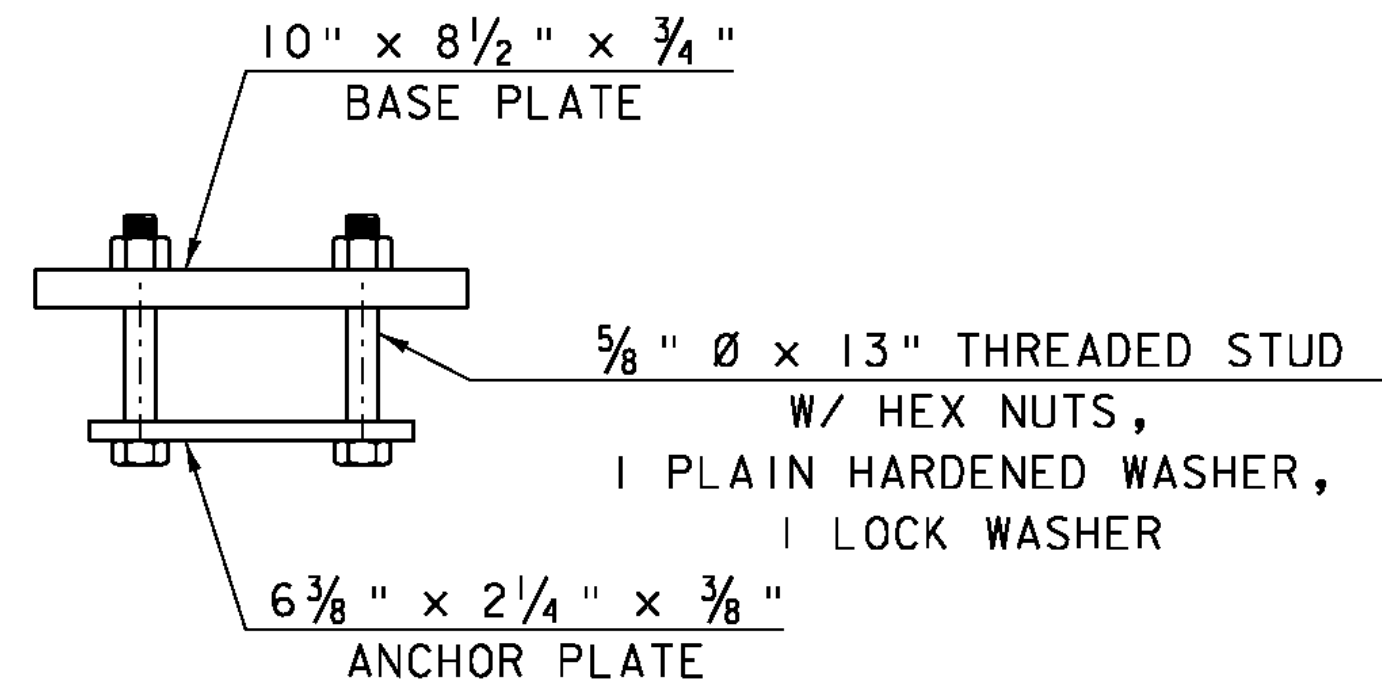


**BOTTOM RAIL SPLICE DETAIL ELEVATION VIEW**



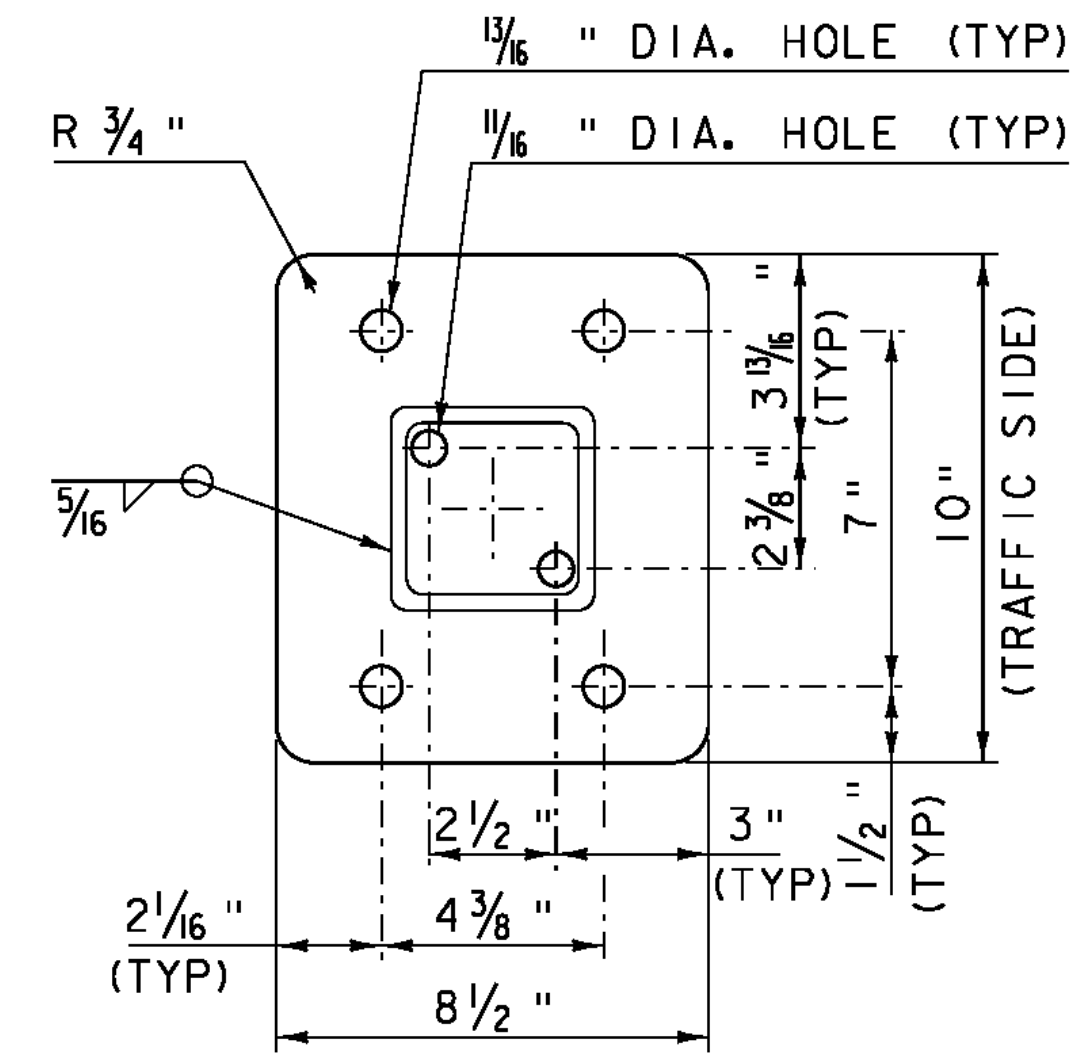
1/2" DIA. HOLE IN SPLICE ELEMENT AND HSS 2" x 2" x 1/8". (TYP)

**SECTION G-G**



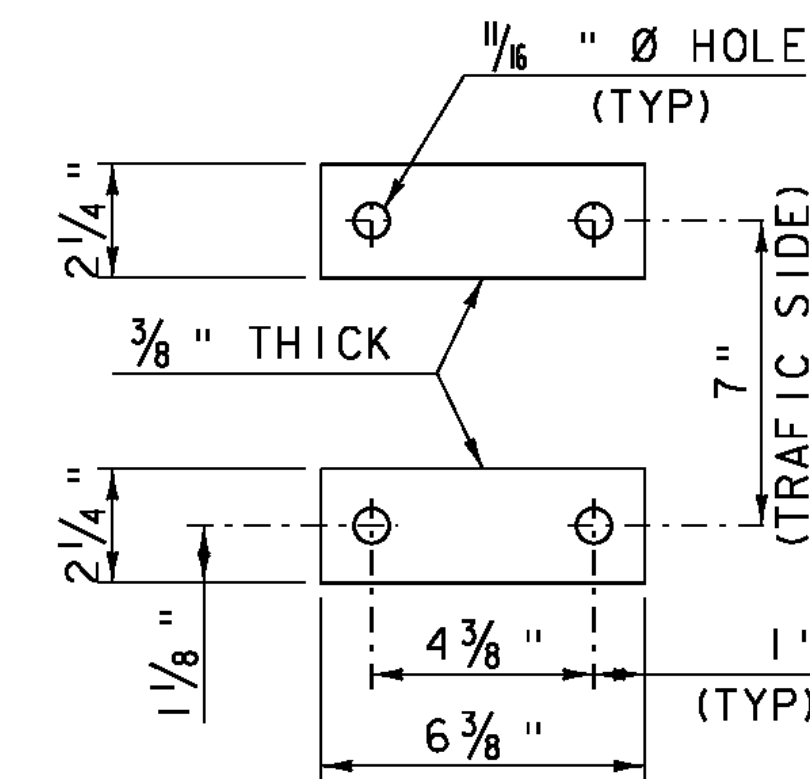
**RAIL POST ANCHORAGE**

N. T. S.



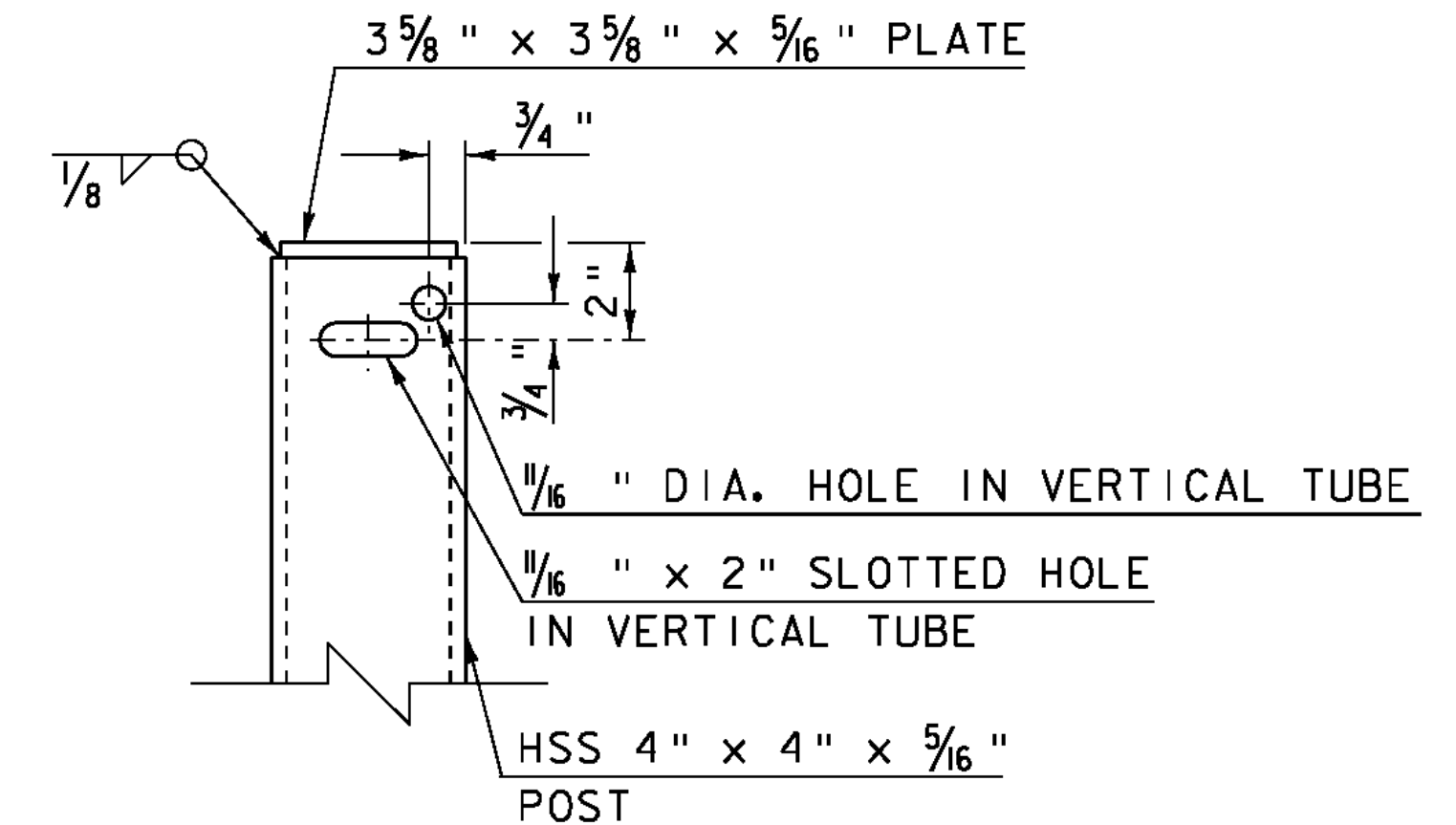
**BASE PLATE**

N. T. S.



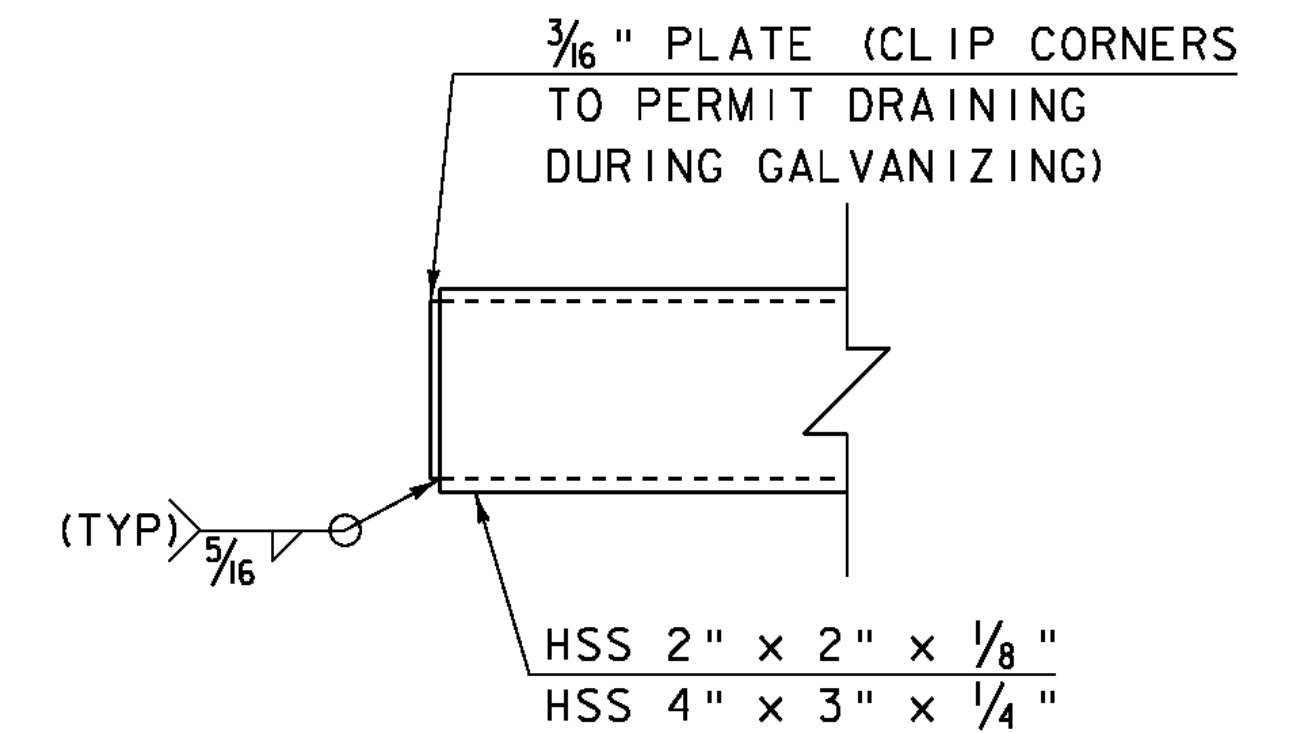
**ANCHOR PLATES**

N. T. S.



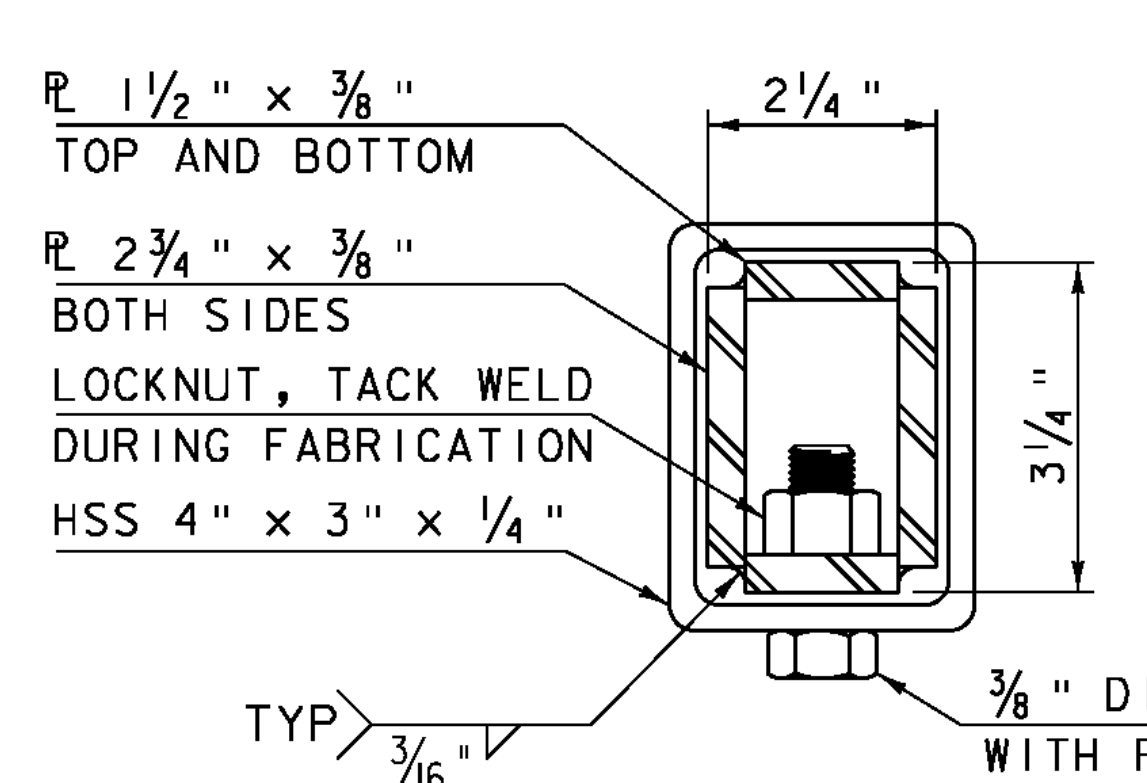
**VERTICAL TUBE DETAIL (FRONT VIEW)**

N. T. S.



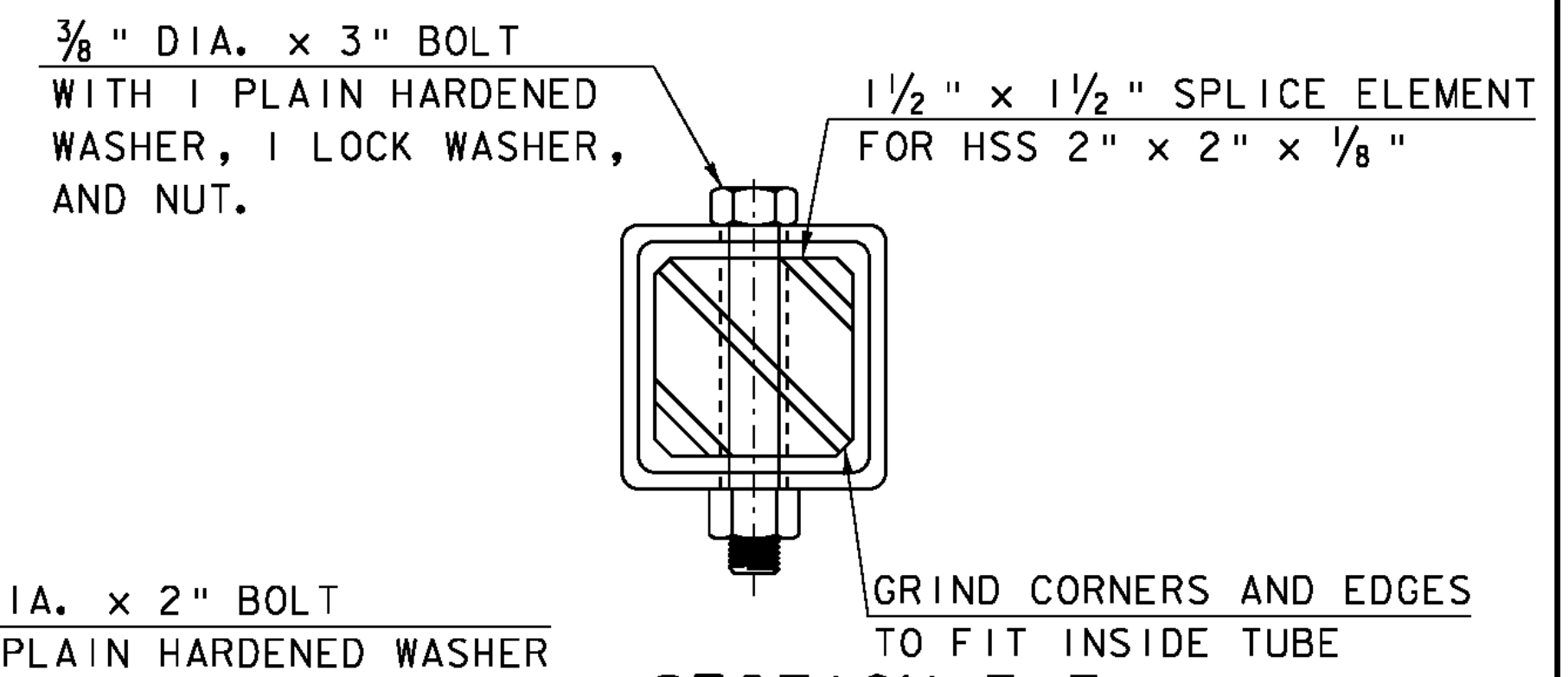
**END OF RAIL DETAIL**

N. T. S.



**SECTION D-D (INNER SLEEVE)**

N. T. S.



**SECTION F-F**

N. T. S.

PROJECT NAME: CHESTER  
PROJECT NUMBER: BRF 025-1(37)

FILE NAME: s95b168r-01.dgn  
PROJECT LEADER: C.P.WILLIAMS  
DESIGNED BY: R.S.YOUNG  
BRIDGE 9 BRIDGE RAIL DETAIL 2

PLOT DATE: 20-SEP-2010  
DRAWN BY: D.D.BEARD  
CHECKED BY: H.I.SALLS  
SHEET 101 OF 124