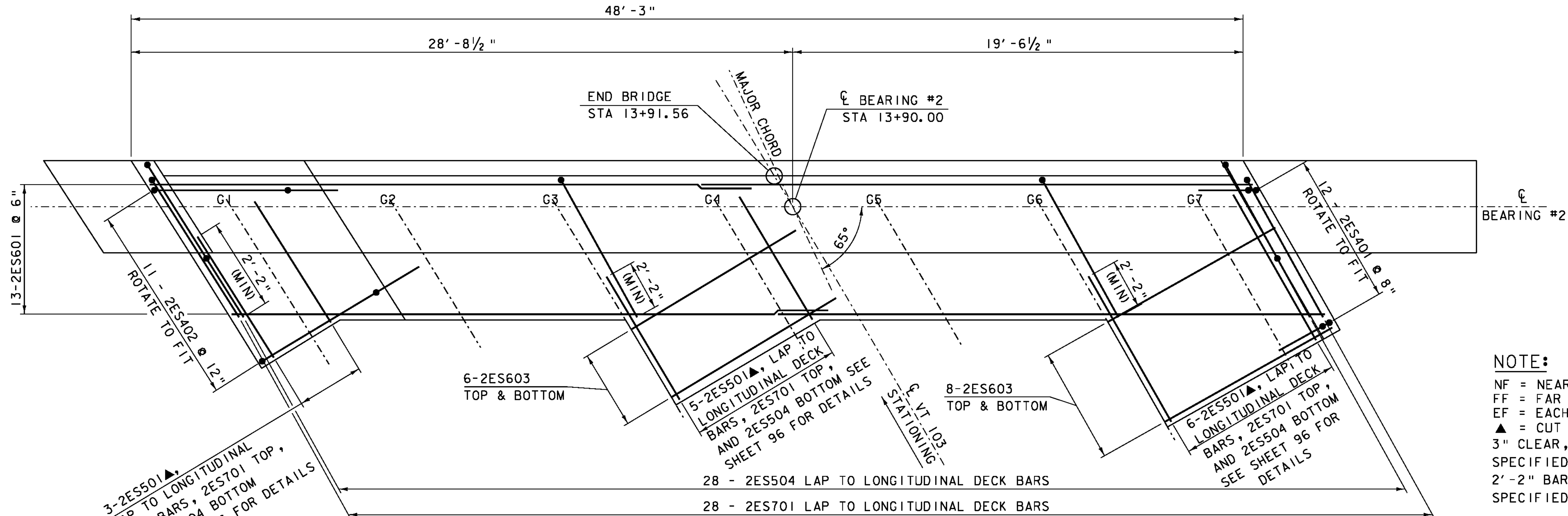


ABUTMENT #1 CLOSURE POUR REINFORCING

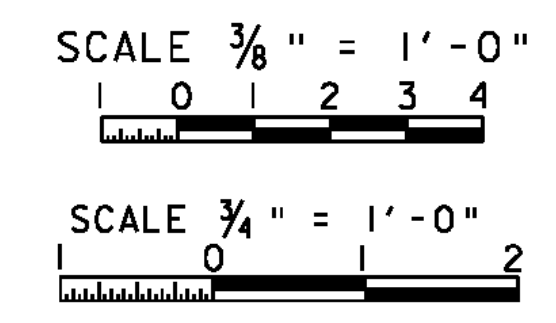
SCALE 3/8" = 1'-0"
NOTE: REBAR IN PRECAST SLABS NOT SHOWN



ABUTMENT #2 CLOSURE POUR REINFORCING

SCALE 3/8" = 1'-0"
NOTE: REBAR IN PRECAST SLABS NOT SHOWN

NOTE:
NF = NEAR FACE
FF = FAR FACE
EF = EACH FACE
▲ = CUT TO FIT IN FIELD
3" CLEAR, UNLESS OTHERWISE SPECIFIED ON THE PLANS.
2'-2" BAR LAP UNLESS OTHERWISE SPECIFIED ON THE PLANS.



PROJECT NAME: CHESTER	PLOT DATE: 20-SEP-2010
PROJECT NUMBER: BRF 025-1(37)	DRAWN BY: D.D.BEARD
FILE NAME: 95b168\95b168sub.dgn	CHECKED BY: R.S.YOUNG
PROJECT LEADER: C.P.WILLIAMS	BRIDGE 9 CLOSURE POUR DETAILS
DESIGNED BY: R.S.YOUNG	SHEET 90 OF 124