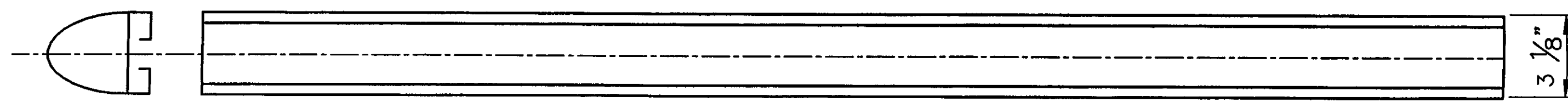
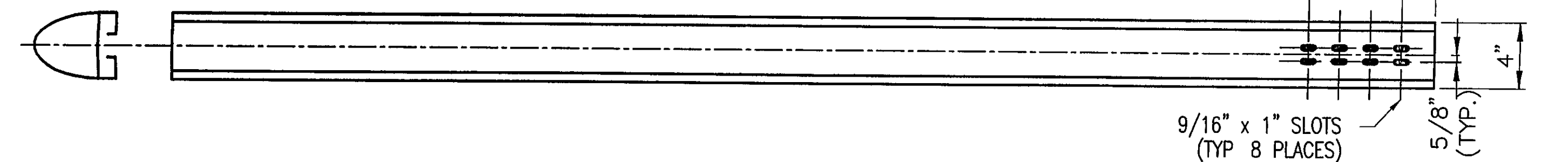
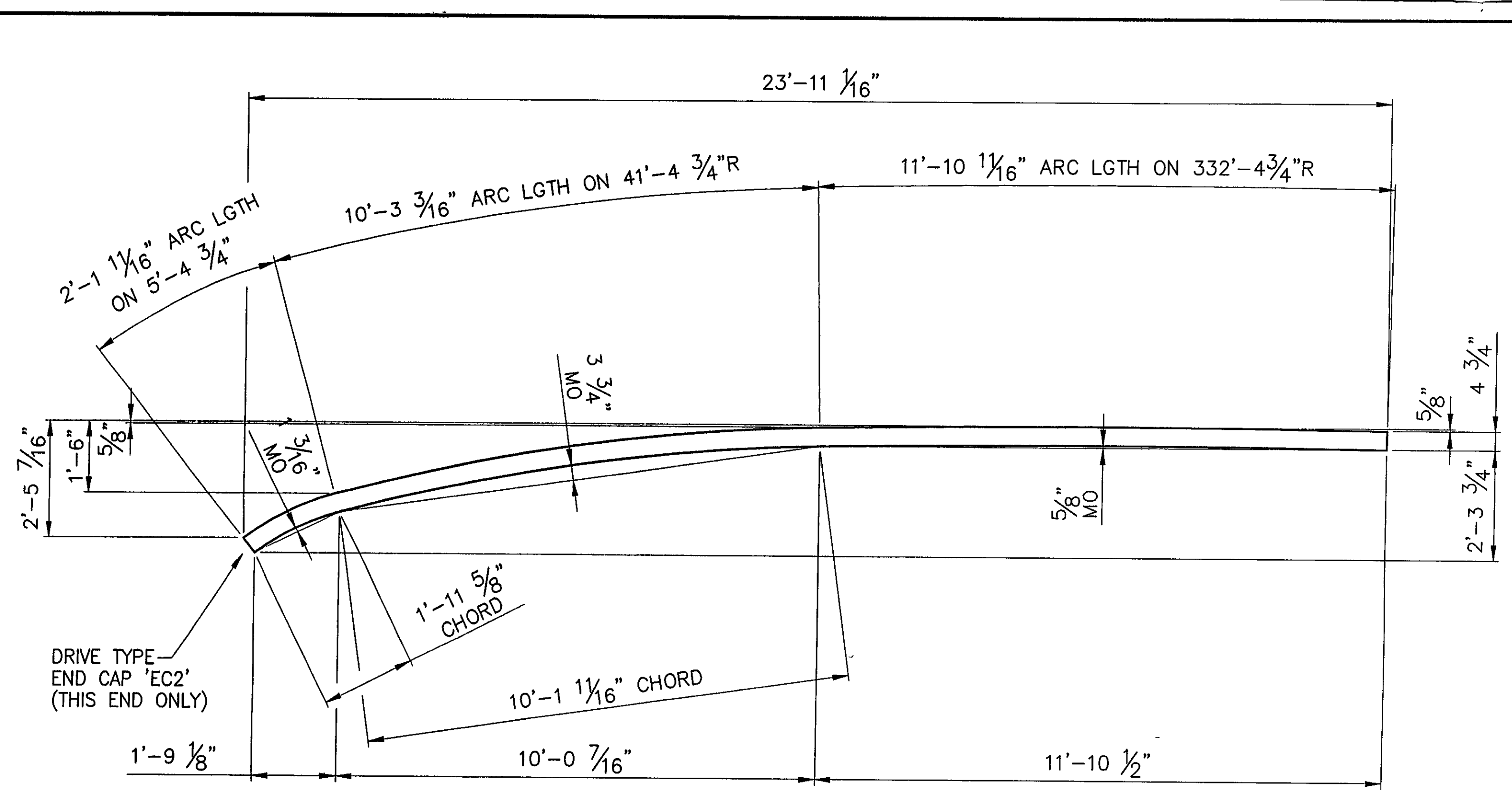


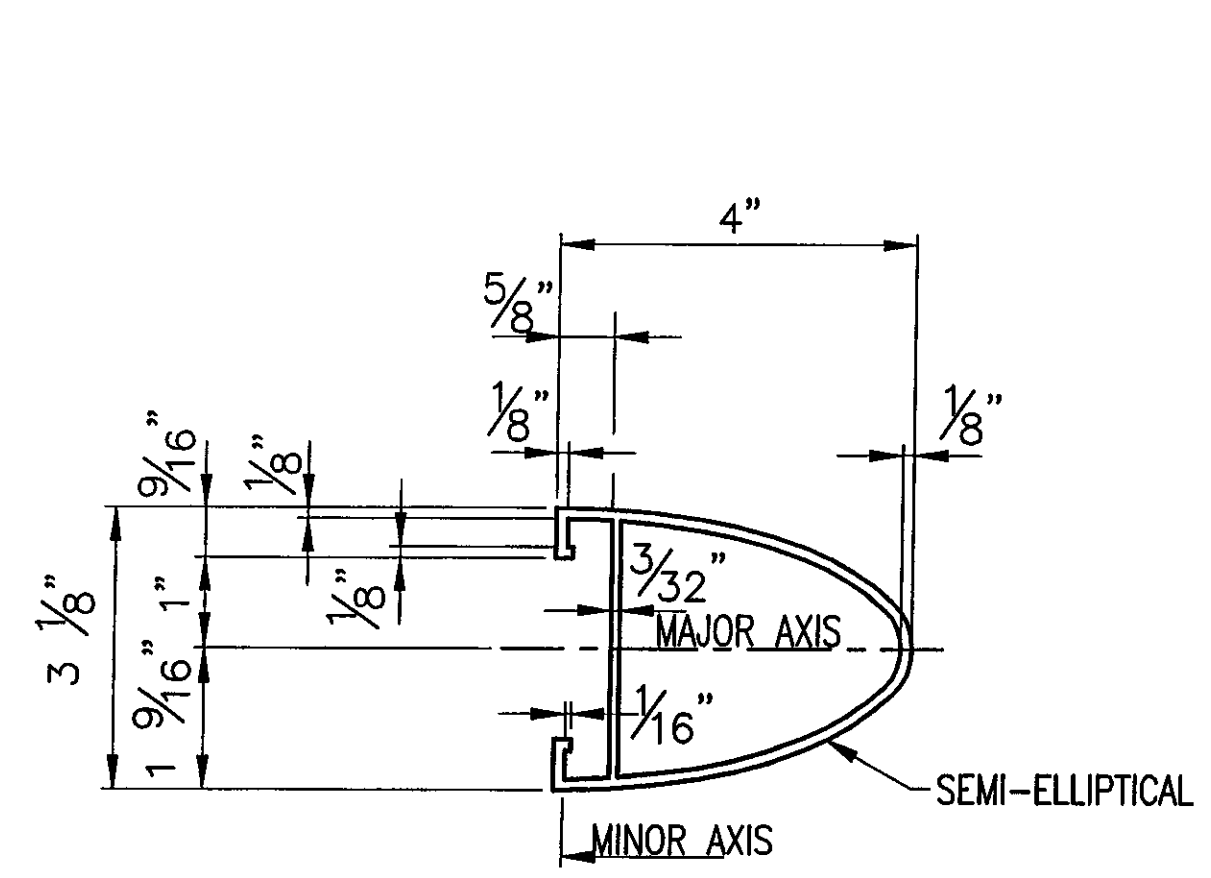
PLAN VIEW



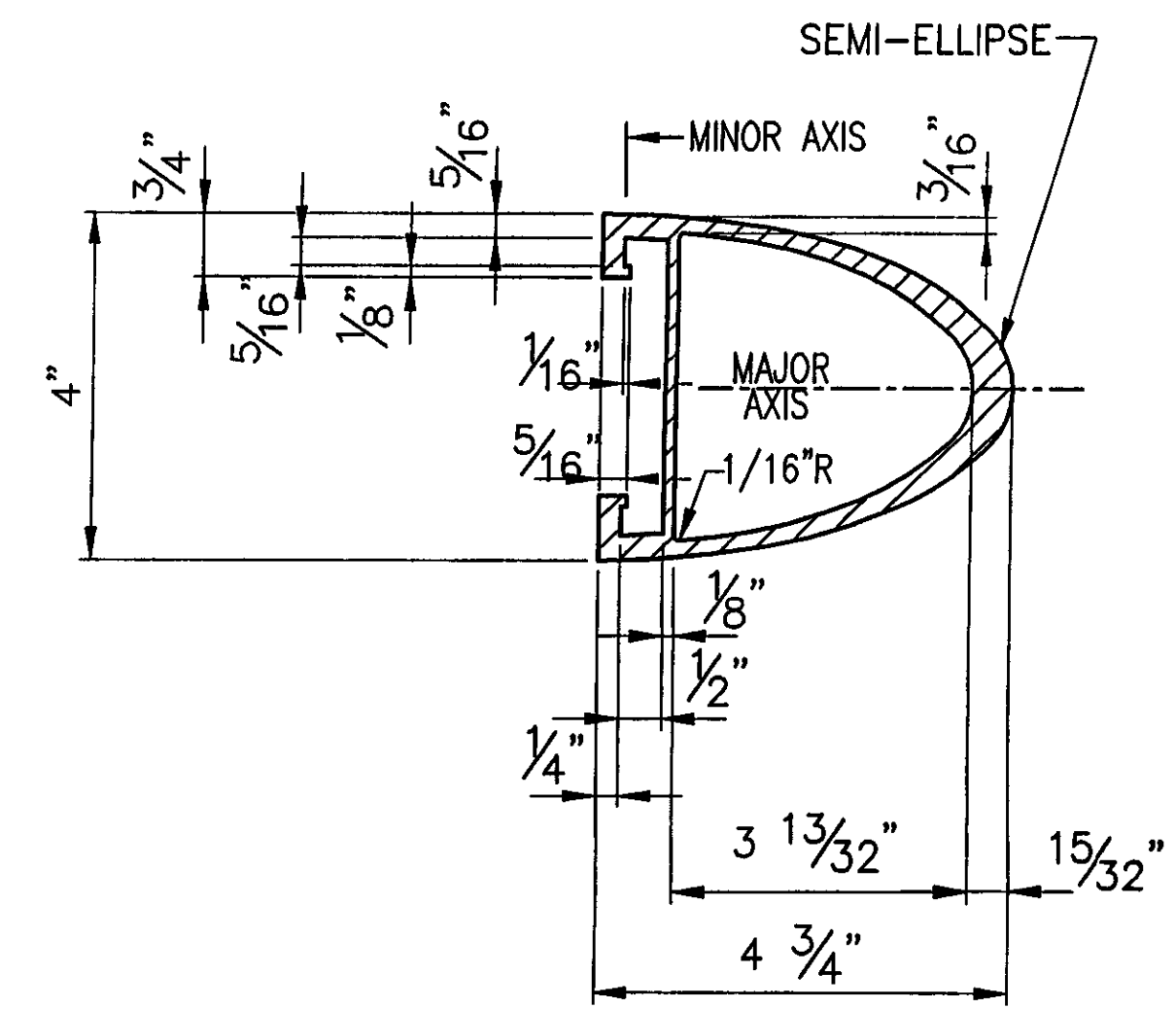
ONE REQ'D - HANDRAIL 'TA10'
(BACK ELEVATION VIEW)
(LENGTH ALONG FF RAIL = 24'-3 3/16" + 5'-0" FOR BENDING (29'-3 3/16"))



2 REQ'D - BARRIER RAIL 'BA10'
(BACK ELEVATION VIEW)
(LENGTH ALONG FF RAIL = 24'-3 9/16" + 5'-0" FOR BENDING (29'-3 9/16"))



TYPICAL SECTION
(HANDRAIL)



TYPICAL SECTION
(BARRIER RAIL)

ANODIZED
(SEE NOTES ON LB1)

RECEIVED
CK'D BY CLO OK'D BY GAS
AUG 03 2007
RESUBMIT _____ APPROVED _____
BY KMH DATE 8/13/07

BRIDGE No 37	PROJECT No BRF 030-2(17)S	ITEM No. 621 74
APPROVED: _____	REC'D APPROVAL _____	DRAWING _____
L.B. FOSTER COMPANY 1016 GREENTREE ROAD PITTSBURGH, PENNSYLVANIA 15220		
FOR: <u>F. R. LAFAYETTE, INCORPORATED</u>		
VERMONT AGENCY OF TRANSPORTATION		
TOWN OF JOHNSON, COUNTY OF LAMOILLE		
BRIDGE RAILING FOR VT15 (MINOR ARTERIAL) OVER GHON RIVER		
3L ALUMINUM APPROACH RAIL - RAIL DETAILS		
MADE <u>CMS</u> DATE <u>05/24/07</u> JOB No <u>AR0395</u> CUST No _____	CHECK <u>BLJ</u> DATE <u>06/01/07</u> DRAWING <u>LB14</u>	REV. No. _____

REV	DESCRIPTION	BY	DATE