

OFFSET BLOCK CHART FOR BRIDGE 37 SE APPROACHES
@ SIDEWALK (WW4) ~ POSTS P5L - P7L

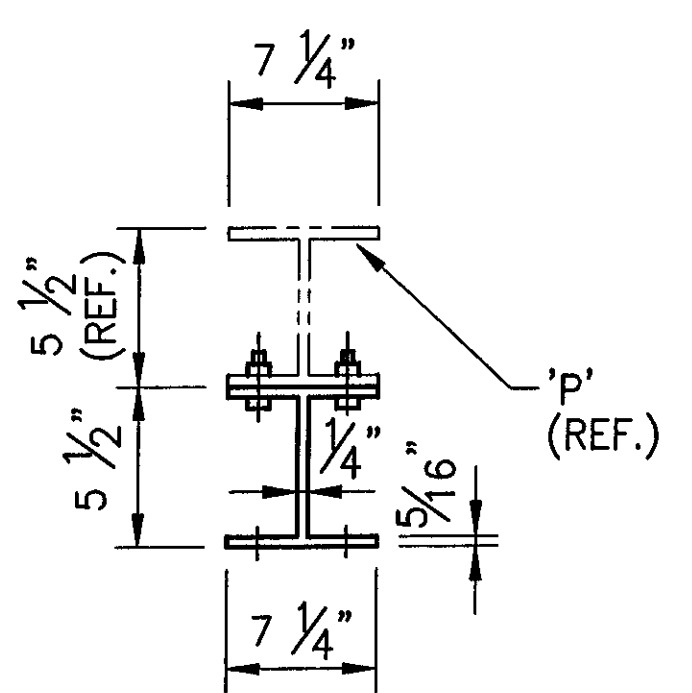
POST No.	OFFSET BLOCK	QTY.	OFFSET BLOCK ~ POST MTG. DIMENSIONS						BEV
			A	B	C	D	E	F (O.C.)	
P5L	OB5L	1	1'-2 15/16"	11 15/16"	2 1/16"	1/16"	1 15/16"	1'-2 7/8"	1/8
P6L	OB6L	1	1'-2 1/8"	11 1/16"	2 1/16"	1/16"	1 15/16"	1'-2 1/16"	1/8
P7L	OB7L	1	1'-1 5/16"	10 1/4"	2 1/16"	1/16"	1 15/16"	1'-1 1/4"	1/8

POST No.	OFFSET BLOCK	OFFSET BLOCK ~ RAIL MTG. DIMENSIONS			
		G	H	J	K
P5L	OB5L	1 3/16"	11 1/16"	1 1/8"	11"
P6L	OB6L	1 3/16"	10 1/4"	1 1/8"	10 1/8"
P7L	OB7L	1 3/16"	9 7/16"	1 1/8"	9 5/16"

OFFSET BLOCK CHART FOR BRIDGE 37 NE APPROACH
@ SHORT SIDEWALK (WW3) ~ POSTS P5R - P7R

POST No.	OFFSET BLOCK	QTY.	OFFSET BLOCK ~ POST MTG. DIMENSIONS						BEV
			A	B	C	D	E	F (O.C.)	
P5R	OB5R	1	1'-3 1/2"	1'-0 1/2"	2 1/2"	15/16"	1 9/16"	1'-3"	1 1/2
P6R	OB6R	1	1'-2 3/4"	11 3/4"	2 1/2"	15/16"	1 9/16"	1'-2 1/4"	1 1/2
P7R	OB7R	1	1'-1 15/16"	10 15/16"	2 1/2"	15/16"	1 9/16"	1'-1 1/2"	1 1/2

POST No.	OFFSET BLOCK	OFFSET BLOCK ~ RAIL MTG. DIMENSIONS			
		G	H	J	K
P5R	OB5R	1 5/16"	11 3/8"	1"	11"
P6R	OB6R	1 5/16"	10 5/8"	1"	10 1/4"
P7R	OB7R	1 5/16"	9 13/16"	1"	9 1/2"



TYP. SECT. POST &
OFFSET BLOCK

NOTE:
4 CLAMPING BARS CB-03-A
(#19447) PER POSTS P5 - P7
w/ 1/2"Ø-13 UNC
S.S. BOLT x 1" LG. 'FB1',
1 1/16" O.D. x 17/32"
I.D. x 3/32" THK. ALUM
WASHER 'FW1'
(#15280 & #19404)
(8 PER POST)

ANODIZED
(SEE NOTES ON LB1)

RECEIVED
OK'D BY: CLD OK'D BY: GAS
AUG 03 2007
RESUBMIT APPROVED
BY: KMH DATE: 8/13/07

1	REVISED ALL POST HIGHTS. PER APPROVERS DIMENSIONS	BLJ	07 30 07
REV.	DESCRIPTION	BY	DATE

BRIDGE No. 37
PROJECT No. BRF 030-2(17)S
ITEM No: 621.74

APPROVED: _____ REC'D APPROVAL _____
DRAWING _____

L.B. FOSTER COMPANY
1016 GREENTREE ROAD
PITTSBURGH, PENNSYLVANIA 15220

FOR: F. R. LAFAYETTE, INCORPORATED
VERMONT AGENCY OF TRANSPORTATION
TOWN OF JOHNSON, COUNTY OF LAMOILLE
BRIDGE RAILING FOR VT15 (MINOR ARTERIAL) OVER GIHON RIVER
OFFSET BLOCK DETAILS

MADE CMS DATE 05/23/07 JOB No AR0395 CUST No
CHECK BLJ DATE 06/01/07 DRAWING LB10 REV. No. ONE