

OFFSET BLOCK CHART FOR BRIDGE 37 SE APPROACHES @ SIDEWALK (WW4)
POSTS P1L - P4L

POST No.	OFFSET BLOCK	QTY	OFFSET BLOCK ~ POST MTG. DIMENSIONS							BEV
			A	B	C	D	E	F (O.C.)	G	
P1L	OB1L	1	2'-4 3/8"	2'-1 7/8"	1'-1 1/4"	1 3/4"	3/8"	2'-4 3/16"	1 3/8"	5/8
P2L	OB2L	1	2'-2 1/4"	1'-11 11/16"	11 11/16"	1 3/4"	3/8"	2'-2 1/16"	1 3/8"	5/8
P3L	OB3L	1	2'-0 1/16"	1'-9 7/16"	10 1/8"	1 3/4"	3/8"	1'-11 7/8"	1 3/8"	5/8
P4L	OB4L	1	1'-9 15/16"	1'-7 1/4"	8 9/16"	1 3/4"	3/8"	1'-9 3/4"	1 3/8"	5/8

OFFSET BLOCK CHART FOR BRIDGE 37 NE APPROACH @ CURB CONDITION
DUE TO SHORT SIDEWALK (WW3) - POSTS P1R - P4R

POST No.	OFFSET BLOCK	QTY	OFFSET BLOCK ~ POST MTG. DIMENSIONS							BEV
			A	B	C	D	E	F (O.C.)	G	
P1R	OB1R	1	2'-4 1/2"	2'-2"	1'-1 3/8"	1 7/8"	5/8"	2'-4 3/16"	1 1/4"	1
P2R	OB2R	1	2'-2 3/8"	1'-11 3/4"	11 13/16"	1 7/8"	5/8"	2'-2 1/16"	1 1/4"	1
P3R	OB3R	1	2'-0 7/8"	1'-9 7/8"	10 1/2"	2 1/4"	1 1/4"	2'-0 1/8"	1"	2 1/16"
P4R	OB4R	1	1'-10 5/8"	1'-7 5/8"	8 13/16"	2 1/4"	1 1/4"	1'-10"	1"	2 1/16"

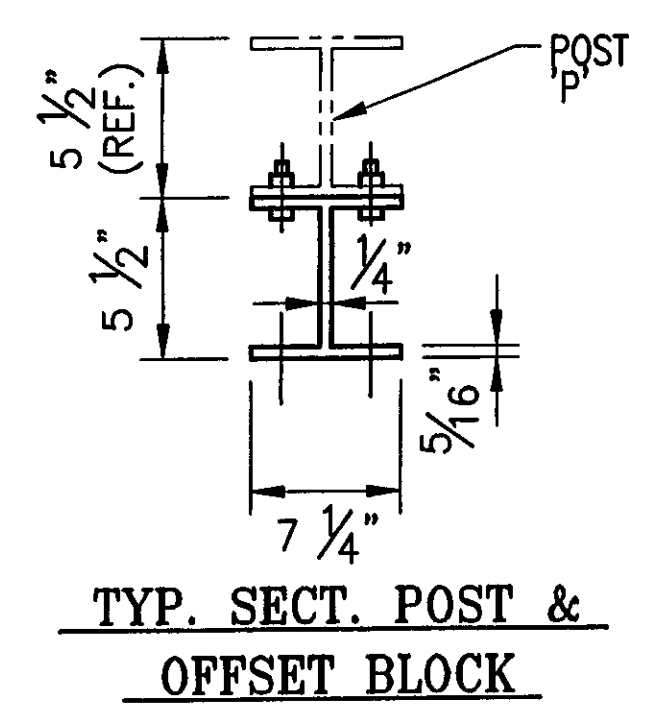
OFFSET BLOCK ~ RAIL MTG. DIMENSIONS

POST No.	OFFSET BLOCK	H	J	K	L	M	N
P1L	OB1L	1"	1'-0 3/8"	2'-1 1/16"	7/8"	1'-0 1/16"	2'-0 5/8"
P2L	OB2L	1"	10 13/16"	1'-10 13/16"	7/8"	10 1/2"	1'-10 7/16"
P3L	OB3L	1"	9 1/4"	1'-8 5/8"	7/8"	8 15/16"	1'-8 1/4"
P4L	OB4L	1"	7 11/16"	1'-6 7/16"	7/8"	7 3/8"	1'-6"

OFFSET BLOCK ~ RAIL MTG. DIMENSIONS

POST No.	OFFSET BLOCK	H	J	K	L	M	N
P1R	OB1R	1 1/16"	1'-0 7/16"	2'-1 1/16"	7/8"	1'-0"	2'-0 9/16"
P2R	OB2R	1 1/16"	10 7/8"	1'-10 7/8"	7/8"	10 7/16"	1'-10 3/8"
P3R	OB3R	1 1/8"	9 5/16"	1'-8 3/4"	13/16"	8 11/16"	1'-6 7/8"
P4R	OB4R	1 1/8"	7 5/8"	1'-6 1/2"	13/16"	7"	1'-5 13/16"

NOTE:
 2 CLAMPING BARS CB-01-H (#28596) PER POSTS P1- P4
 4 CLAMPING BARS CB-03-A (#19447) PER POSTS P1- P4
 w/ 1/2" φ-13 UNC S.S. BOLT x 1" LG. 'FB1',
 1 1/16" O.D. x 17/32" I.D. x 3/32" THK. ALUM WASHER 'FW1' (#15280 & #19404) (16 PER POST)



ANODIZED
(SEE NOTES ON LB1)

RECEIVED
 OK'D BY CLD OK'D BY GAS
 AUG 03 2007
 RESUBMIT APPROVED
 BY KMH DATE 8/13/07

REVISION	DESCRIPTION	BY	DATE
1	REVISED ALL POST HIGHTS. PER APPROVERS DIMENSIONS	BLJ	07/30/07

BRIDGE No. 37
 PROJECT No BRF 030-2(17)S
 ITEM No: 621.74

APPROVED: _____ REC'D APPROVAL _____
 DRAWING _____

L.B. FOSTER COMPANY
 1016 GREENTREE ROAD
 PITTSBURGH, PENNSYLVANIA 15220

FOR: F. R. LAFAYETTE, INCORPORATED
 VERMONT AGENCY OF TRANSPORTATION
 TOWN OF JOHNSON, COUNTY OF LAMOILLE
 BRIDGE RAILING FOR VT15 (MINOR ARTERIAL) OVER GIHON RIVER
 OFFSET BOX DETAILS

MADE CMS DATE 05/23/07 JOB No AR0395 CUST No _____
 CHECK BLJ DATE 06/01/07 DRAWING LB9 REV. No. ONE