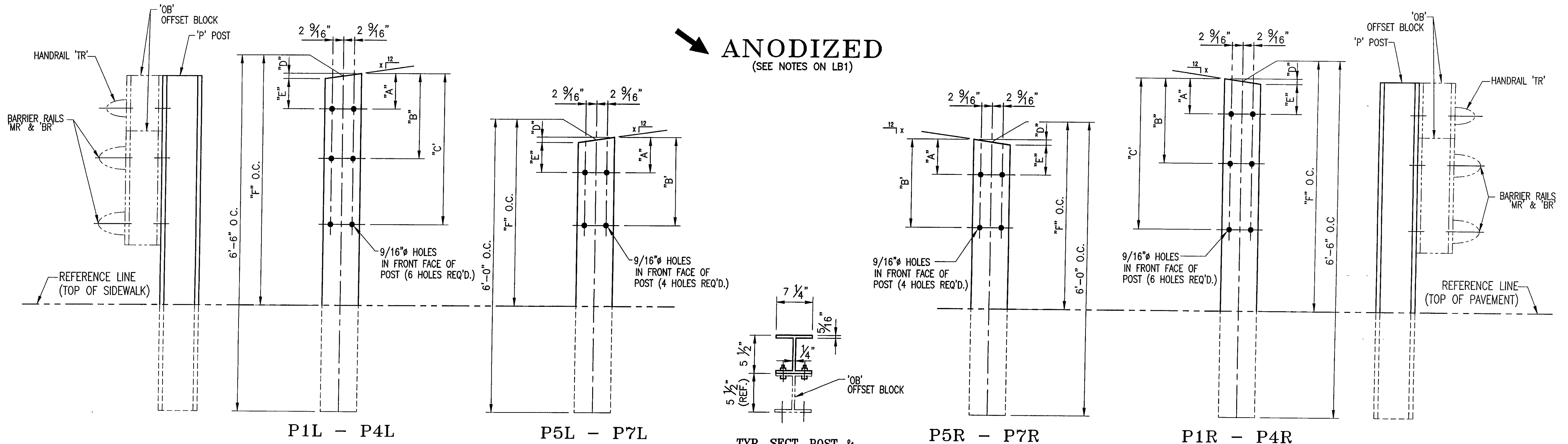


**ANODIZED**  
(SEE NOTES ON LB1)



TYP. SECT. POST &  
OFFSET BLOCK

**POST DETAIL CHART FOR BRIDGE 37 SE APPROACH  
SIDEWALK CONDITION (WW4)**

| POST No. | QTY. | OFFSET BLOCK MTG. DIMENSIONS |           |              |       |          |             | BEV |
|----------|------|------------------------------|-----------|--------------|-------|----------|-------------|-----|
|          |      | A                            | B         | C            | D     | E        | F (O.C.)    |     |
| P1L      | 1    | 1 3/4"                       | 1'-1 1/4" | 2'-1 7/8"    | 3/8"  | 1 3/8"   | 3'-4 15/16" | 5/8 |
| P2L      | 1    | 1 3/4"                       | 11 11/16" | 1'-11 11/16" | 3/8"  | 1 3/8"   | 3'-3"       | 5/8 |
| P3L      | 1    | 1 3/4"                       | 10 1/8"   | 1'-9 7/16"   | 3/8"  | 1 3/8"   | 3'-1"       | 5/8 |
| P4L      | 1    | 1 3/4"                       | 8 9/16"   | 1'-7 1/4"    | 3/8"  | 1 3/8"   | 2'-11 1/16" | 5/8 |
| P5L      | 1    | 2 1/16"                      | 11 15/16" |              | 1/16" | 1 15/16" | 2'-4 3/16"  | 1/8 |
| P6L      | 1    | 2 1/16"                      | 11 1/16"  |              | 1/16" | 1 15/16" | 2'-3 11/16" | 1/8 |
| P7L      | 1    | 2 1/16"                      | 10 1/4"   |              | 1/16" | 1 15/16" | 2'-3 1/8"   | 1/8 |

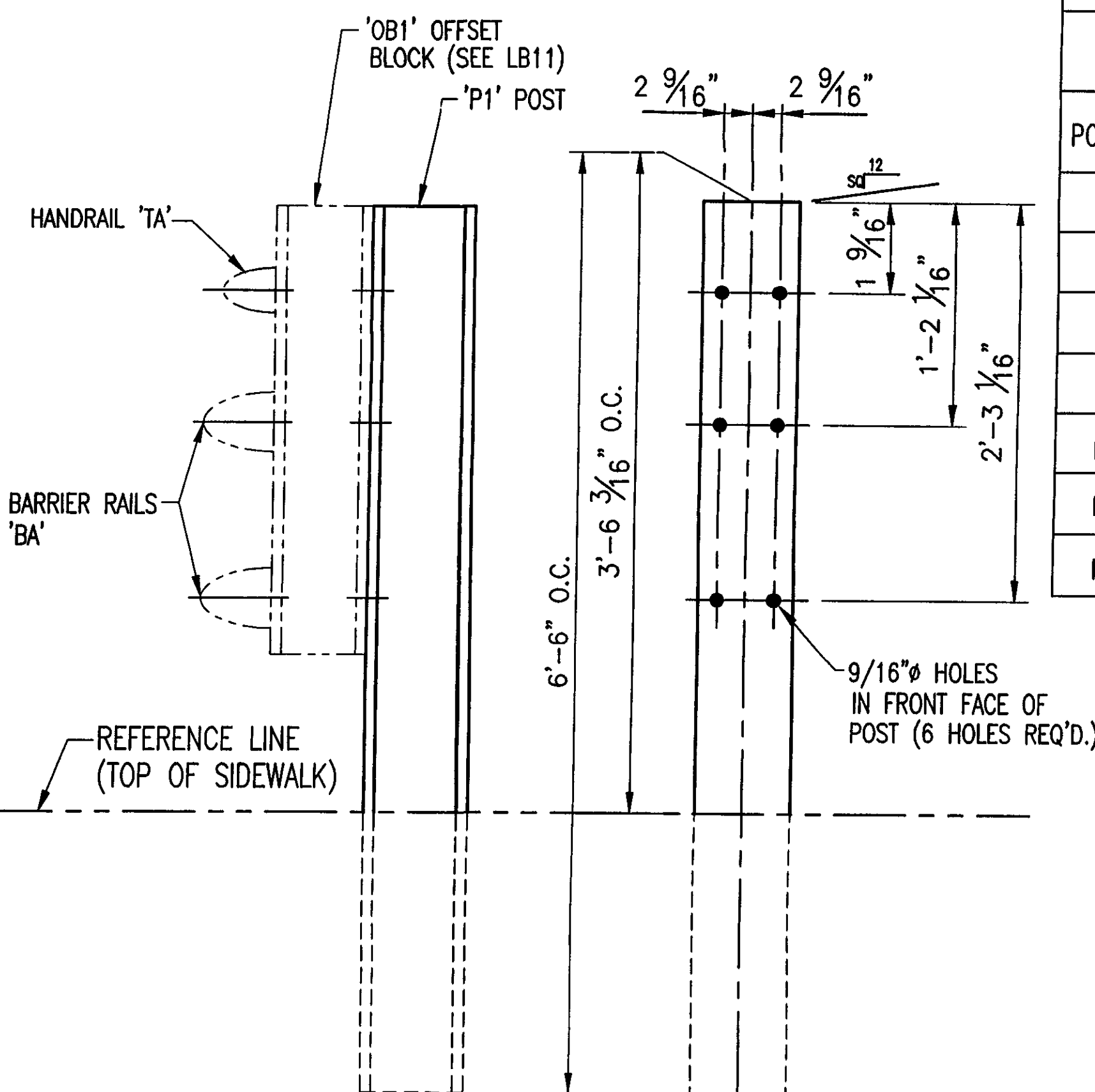
**POST DETAIL CHART FOR BRIDGE 37 NE APPROACH  
CURB CONDITION DUE TO SHORT SIDEWALK (WW3)**

| POST No. | QTY. | OFFSET BLOCK MTG. DIMENSIONS <sup>1</sup> |           |            |        |         |              | BEV     |
|----------|------|---|-----------|------------|--------|---------|--------------|---------|
|          |      | A   | B         | C          | D      | E       | F (O.C.)     |         |
| P1R      | 1    | 1 7/8"                                    | 1'-1 3/8" | 2'-2"      | 5/8"   | 1 1/4"  | 4'-2 1/8"    | 1       |
| P2R      | 1    | 1 7/8"                                    | 11 13/16" | 1'-11 3/4" | 5/8"   | 1 1/4"  | 3'-10 15/16" | 1       |
| P3R      | 1    | 2 1/4"                                    | 10 1/2"   | 1'-9 7/8"  | 1 1/4" | 1"      | 3'-7 11/16"  | 2 1/16" |
| P4R      | 1    | 2 1/4"                                    | 8 13/16"  | 1'-7 5/8"  | 1 1/4" | 1"      | 3'-4 1/2"    | 2 1/16" |
| P5R      | 1    | 2 1/2"                                    | 1'-0 1/2" |            | 15/16" | 1 9/16" | 2'-8 3/16"   | 1 1/2"  |
| P6R      | 1    | 2 1/2"                                    | 11 3/4"   |            | 15/16" | 1 9/16" | 2'-5 3/4"    | 1 1/2"  |
| P7R      | 1    | 2 1/2"                                    | 10 15/16" |            | 15/16" | 1 9/16" | 2'-3 7/8"    | 1 1/2"  |

Dimension does not match value on Drawing LB6A

NOTE:  
2 CLAMPING BARS CB-01-H (#28596) PER POSTS P1-P4  
4 CLAMPING BARS CB-03-A (#19447) PER POSTS P1-P4  
w/ 1/2" φ-13 UNC  
S.S. BOLT x 1" LG. 'FB1',  
1 1/16" O.D. x 17/32"  
I.D. x 3/32" THK. ALUM  
WASHER 'FW1'  
(#15280 & # 19404)  
(16 PER POST)

NOTE:  
4 CLAMPING BARS CB-03-A (#19447) PER POSTS P5-P7  
w/ 1/2" φ-13 UNC  
S.S. BOLT x 1" LG. 'FB1',  
1 1/16" O.D. x 17/32"  
I.D. x 3/32" THK. ALUM  
WASHER 'FW1'  
(#15280 & # 19404)  
(8 PER POST)



**32 REQ'D. ~ POST 'P1'**  
(NW (WW1) & SW (WW2) APPROACHES ONLY)

BRIDGE No 37  
PROJECT No. BR 030-2(17)S  
ITEM No. 621.74

APPROVED: \_\_\_\_\_ REC'D APPROVAL \_\_\_\_\_  
DRAWING \_\_\_\_\_

**L.B. FOSTER COMPANY**  
1016 GREENTREE ROAD  
PITTSBURGH, PENNSYLVANIA 15220

FOR: F. R. LAFAYETTE, INCORPORATED  
VERMONT AGENCY OF TRANSPORTATION  
TOWN OF JOHNSON, COUNTY OF LAMOILLE  
BRIDGE RAILING FOR VT15 (MINOR ARTERIAL) OVER GHON RIVER  
3L ALUMINUM APPROACH RAIL POST DETAILS

MADE CMS DATE 05/23/07 JOB No AR0395 CUST No  
CHECK BLJ DATE 05/31/07 DRAWING LB8 REV. No. ONE

| REV. | DESCRIPTION                           | BY  | DATE     |
|------|---------------------------------------|-----|----------|
| 1    | REVISED DIMENSION PER APPROVER MARKUP | CMS | 07 24 07 |

RECEIVED  
CHKD BY CLD OK'D BY GAS  
AUG 03 2007  
RESUBMIT APPROVED AS NOTED  
BY KMH DATE 8/13/07