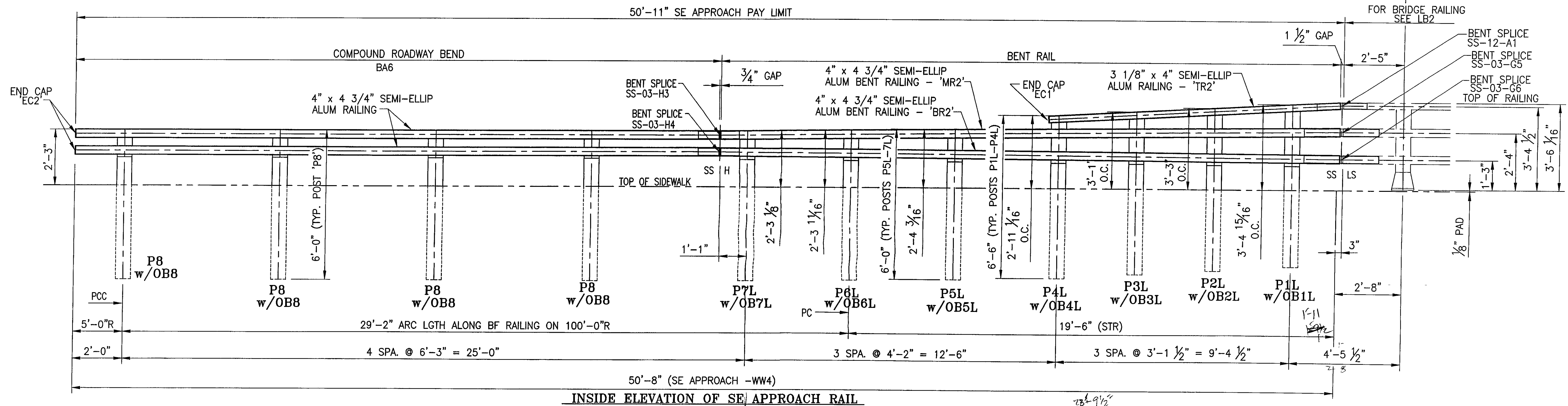


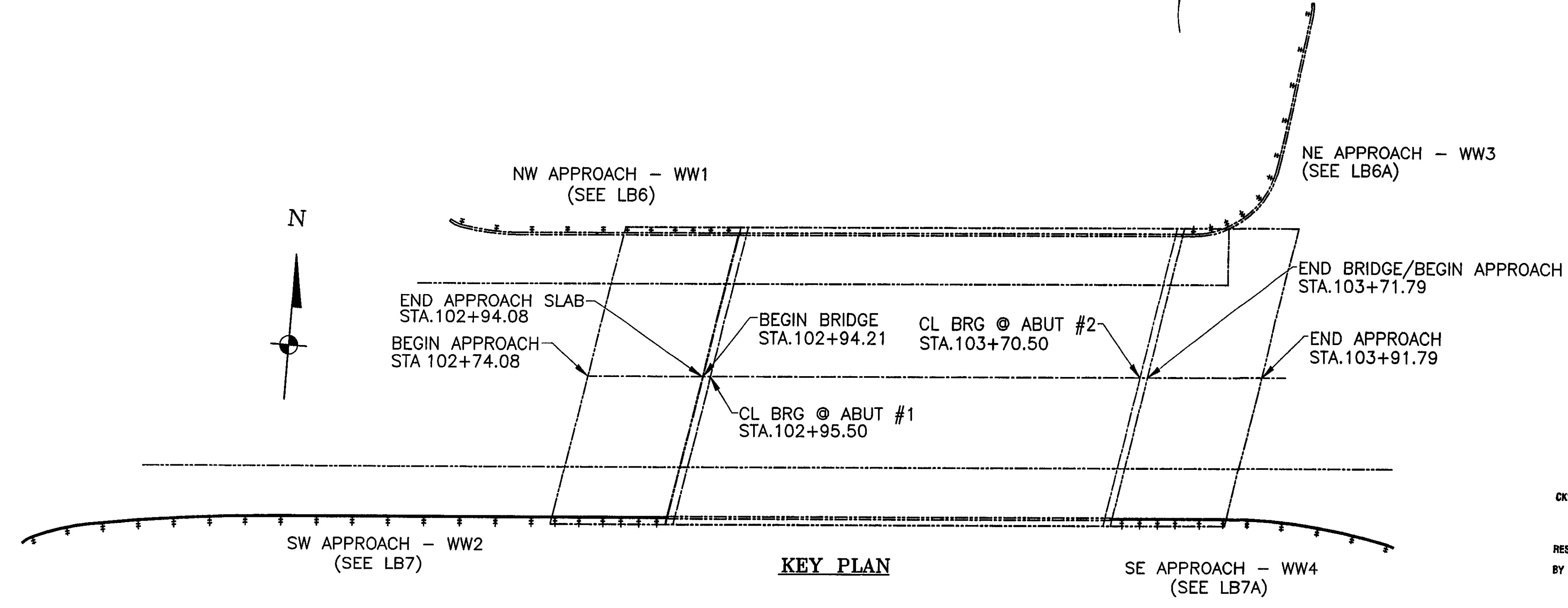
**PLAN PLAN**



**INSIDE ELEVATION OF SE APPROACH RAIL**

NOTE:  
 • RAIL LENGTHS DO NOT INCLUDE END CAPS AND/OR GAPS.  
 • LENGTH OF APPROACH RAILING ON THIS SHEET IS 50.91 LF PAY LENGTH.

H = HOLE SIDE  
 SS = SHORT SLOTTED SIDE  
 LS = LONG SLOTTED SIDE



**KEY PLAN**

**ANODIZED**  
 (SEE NOTES ON LB1)

RECEIVED  
 OK'D BY CLD OK'D BY GAS  
 AUG 03 2007  
 RESUBMIT APPROVED  
 BY KMH DATE 8/13/07

REV	DESCRIPTION	BY	DATE

BRIDGE No 37  
 PROJECT No BRF 030-2(17)S  
 ITEM No: 621.74

APPROVED: \_\_\_\_\_ REC'D APPROVAL \_\_\_\_\_  
 DRAWING \_\_\_\_\_

**L.B. FOSTER COMPANY**  
 1016 GREENTREE ROAD  
 PITTSBURGH, PENNSYLVANIA 15220

FOR: F. R. LAFAYETTE, INCORPORATED  
 VERMONT AGENCY OF TRANSPORTATION  
 TOWN OF JOHNSON, COUNTY OF LAMOILLE  
 BRIDGE RAILING FOR VT15 (MINOR ARTERIAL) OVER GIHON RIVER  
 3L ALUM BRIDGE APPROACH RAILING ~ ELEVATION VIEWS

MADE CMS DATE 05/23/07 JOB No ARO395 CUST No  
 CHECK BLJ DATE 05/31/07 DRAWING LB7A REV. No.