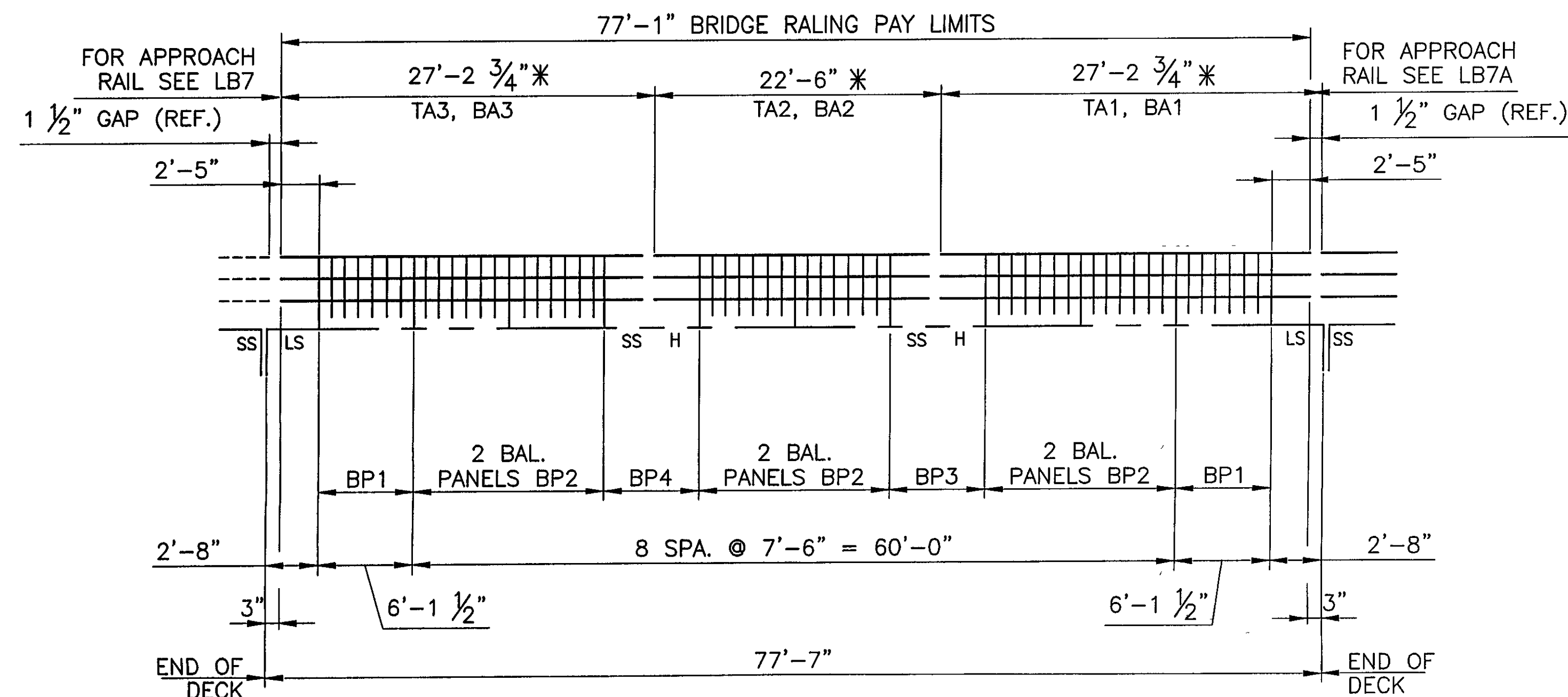


INSIDE ELEVATION ~ NORTH RAIL



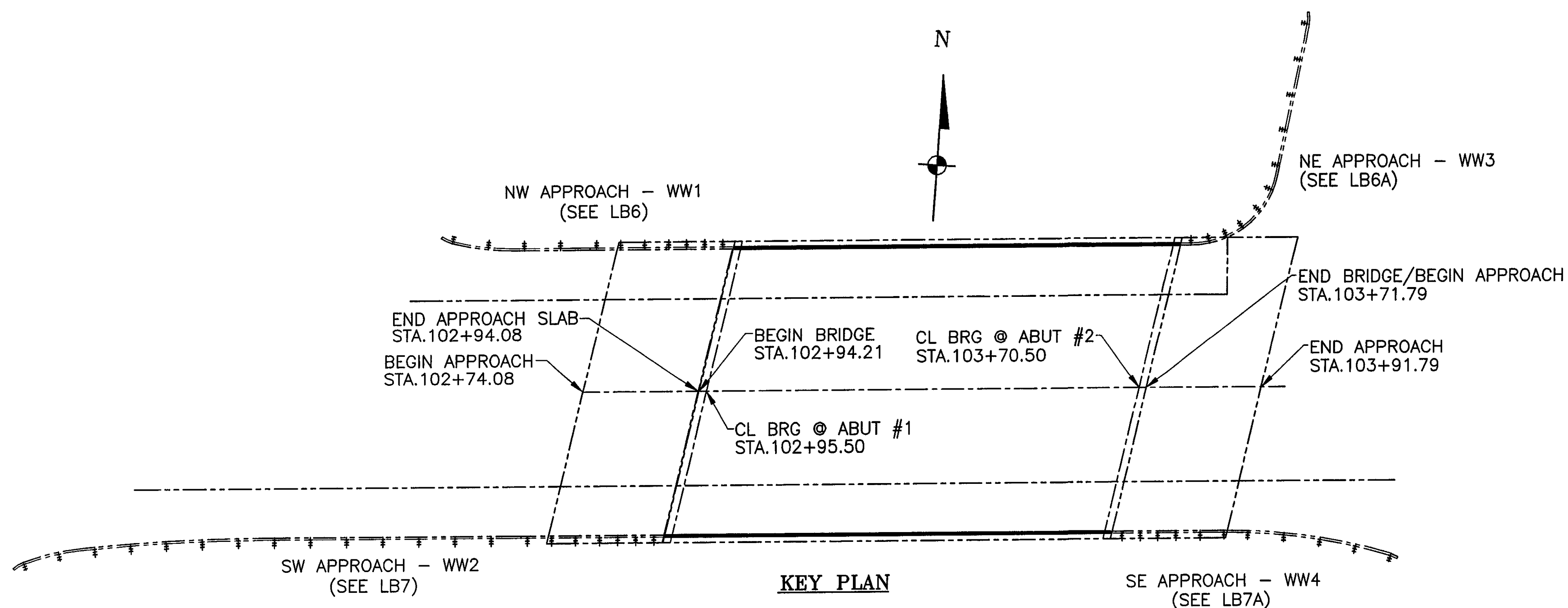
OUTSIDE ELEVATION ~ SOUTH RAIL

H = HOLE SIDE  
 SS = SHORT SLOTTED SIDE  
 LS = LONG SLOTTED SIDE

(SPLICES @ ENDS TO BE BILLED OUT ON APPR SHEETS) (TYP.)

NOTE:

- THIS CONTRACT IS BASED UPON THE SPACING THE ANCHOR BOLTS TO THE MEASUREMENTS SHOWN ON THE APPROVED SHOP DRAWINGS. THE L.B. FOSTER CO. WILL NOT BE RESPONSIBLE FOR WORK RESPONSIBLE NECESSITATED BY ANY OTHER SETTING AND SPACING.
- THIS DRAWING IS NOT TO SCALE.
- FOR GENERAL NOTES AND TYPICAL DETAILS SEE DRAWING LB1.
- LENGTH OF RAILING ON THIS SHEET IS 154.17 LF PAY LENGTH.
- POST SPACING IS MEASURED HORIZONTALLY FF OR RAIL.
- SPLICE GAP AT SLEEVE = 3/4" TYP U.N.
- \* ACTUAL RAIL LENGTHS. THEY DO NOT INCLUDE GAPS.
- COMPENSATION FOR VERTICAL CURVE IS NOT NECESSARY.



KEY PLAN

**ANODIZED**  
 (SEE NOTES ON LB1)

BRIDGE No 37  
 PROJECT No. BRF 030-2(17)S  
 ITEM No 525 23

APPROVED: \_\_\_\_\_ REC'D APPROVAL \_\_\_\_\_  
 DRAWING \_\_\_\_\_

**L.B. FOSTER COMPANY**  
 1016 GREENTREE ROAD  
 PITTSBURGH, PENNSYLVANIA 15220

FOR: F. R. LAFAYETTE, INCORPORATED  
 VERMONT AGENCY OF TRANSPORTATION  
 TOWN OF JOHNSON, COUNTY OF LAMOILLE  
 BRIDGE RAILING FOR VT15 (MINOR ARTERIAL) OVER GHON RIVER  
 3L ALUM BRIDGE RAILING ~ ELEVATION & KEY PLAN

RECEIVED  
 OK'D BY CLD OK'D BY GAS  
 AUG 03 2007  
 RESUBMIT APPROVED ✓  
 BY KWH DATE 8/13/07

REV	DESCRIPTION	BY	DATE
1	REVISED PER APPROVER MARKUP	CMS	07 05 07

MADE CMS DATE 05/21/07 JOB No AR0395 CUST No  
 CHECK BLJ DATE 05/31/07 DRAWING LB2 REV. No ONE