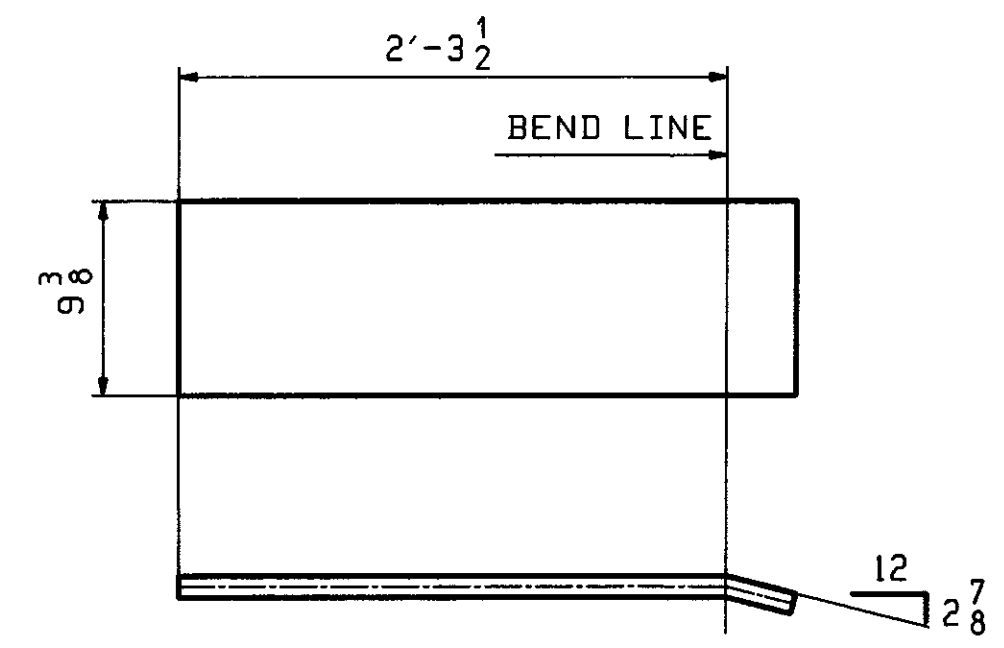
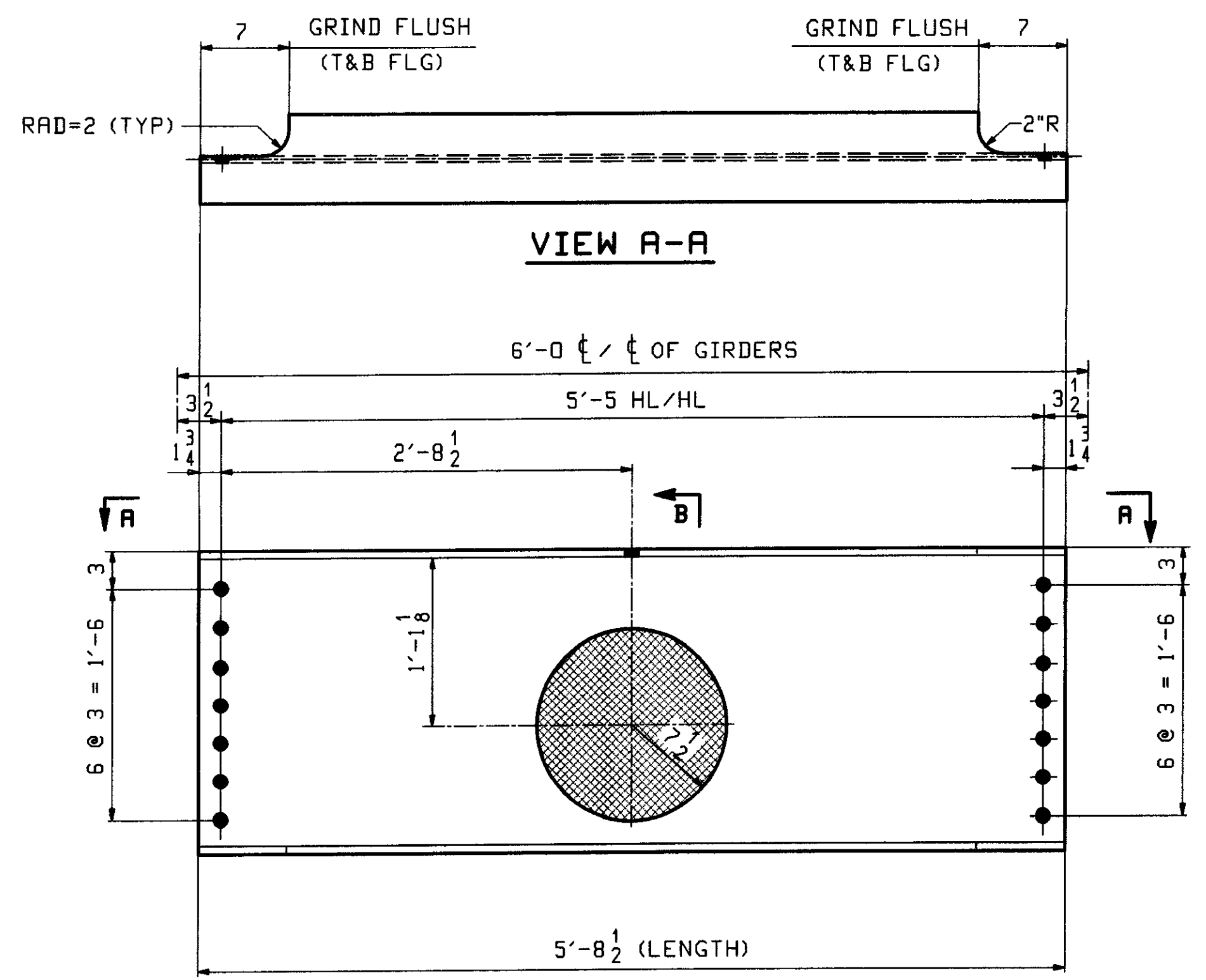


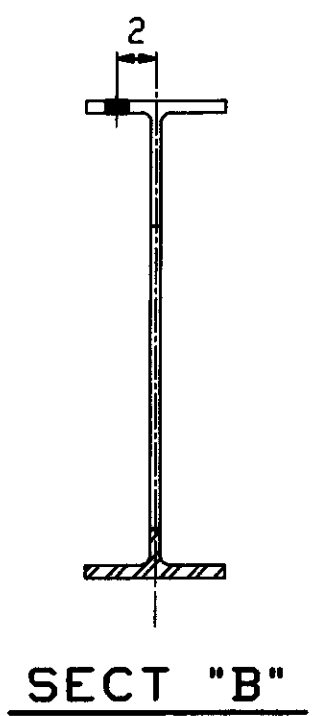
28 ~ INT. DIAPHRAGMS - 7D1



18 ~ ABUT END PLATES ~ 7E1
(GALV. AFTER FAB.)



8 ~ INT. DIAPHRAGMS - 7D2



SECT "B"

ABM INFO		SHIP		BILL OF MATERIAL				JOB NO	DRAWING NO	REV
								323	7	
PAGE	LINE	MARK	QTY	MARK	MATERIAL	LENGTH		REMARKS	WT	PROCUREMENT NOTES
						FT	INCHES			
		7D1	28		INT DIAPHRAGM					194
2	F		28	C	15x33 9	5	8 1/2	(M27D-50)		
		7D2	8		INT DIAPHRAGM					314
2	G		8	W	24x55	5	8 1/2	(M27D-50)		
		7E1	18		ABUT END PLATES					21
2	J		18	PL	1/4 x 9 3/8	2	7	(M27D-36)		

OUT FOR APPROVAL	5-29-07									
OUT FOR APPROVAL										
ISSUED TO SHOP										
FIELD & OFFICE										

REV.	REMARKS	DATE	DWN	CHK	APP	Q.A.	NO.	DIA.	LGT	TYPE	WASHER
	MATERIAL (UN)										
	M27D GR. 50 (UN)										

SURFACE PREP. & PAINT:
SEE PAINT NOTES ON DWG GNI

DESCRIPTION:	DIAPHRAGMS	DRAWN BY	DATE
JOB:	VT. ROUTE 15 OVER THE GIRON RIVER	WR	05/17
	BRIDGE NO 37	CHKD BY	
	TOWN OF JOHNSON, VT. (LAMOILLE COUNTY)	DO	05/21
		APPROV BY	
		SUPERVISOR	W J GATTI

PROJ NO.	BRF 030-2(17)S	Q.A.	
CUSTOMER:	VT R.O.T		
CASCO BAY STEEL STRUCTURES, INC.		JOB NO	DRG. NO.
75 SPRING HILL ROAD SACO, MAINE 04072		323	7
PHONE (207) 282-7360 FAX. (207) 282-1179		REV.	△

RECEIVED
OK'D BY CLO OK'D BY [Signature]
JUN 01 2007
RESUBMIT _____ APPROVED [Signature]
BY WJ DATE 6/27/07