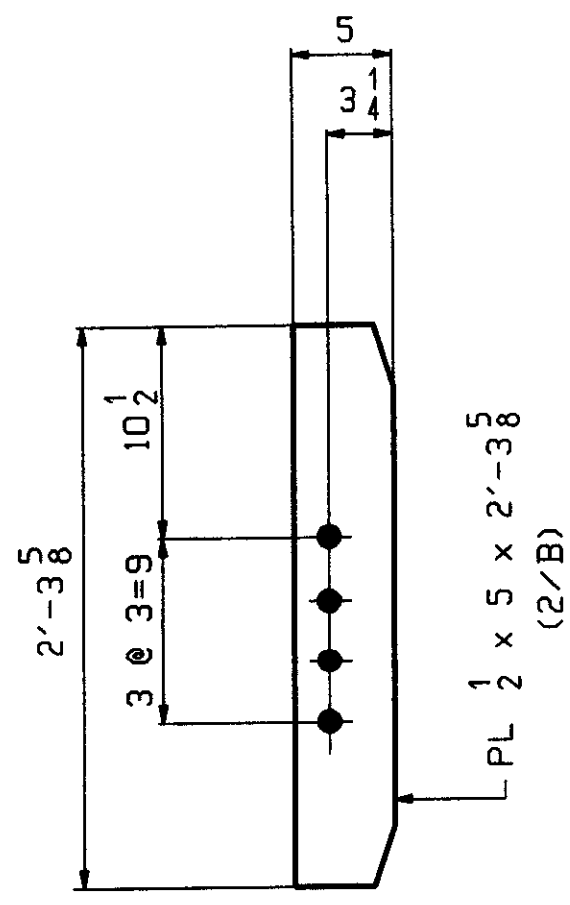
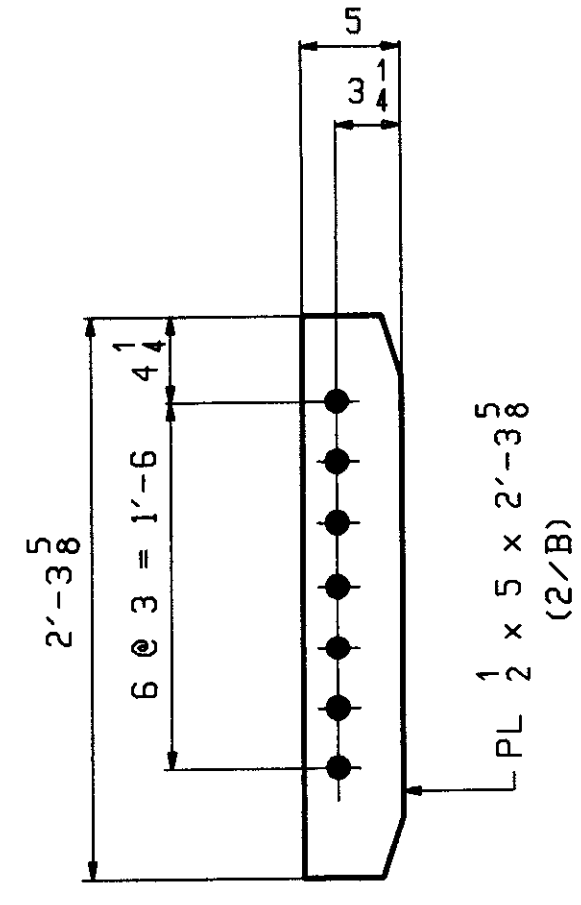


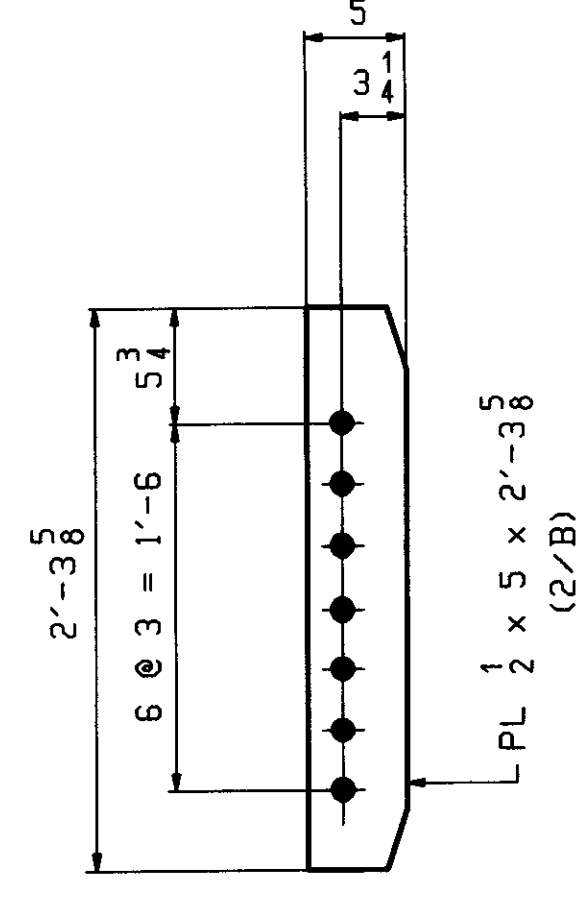
28 ~ x1a
CONN PL - LOW END



24
28 ~ x1b
CONN PL - HIGH END

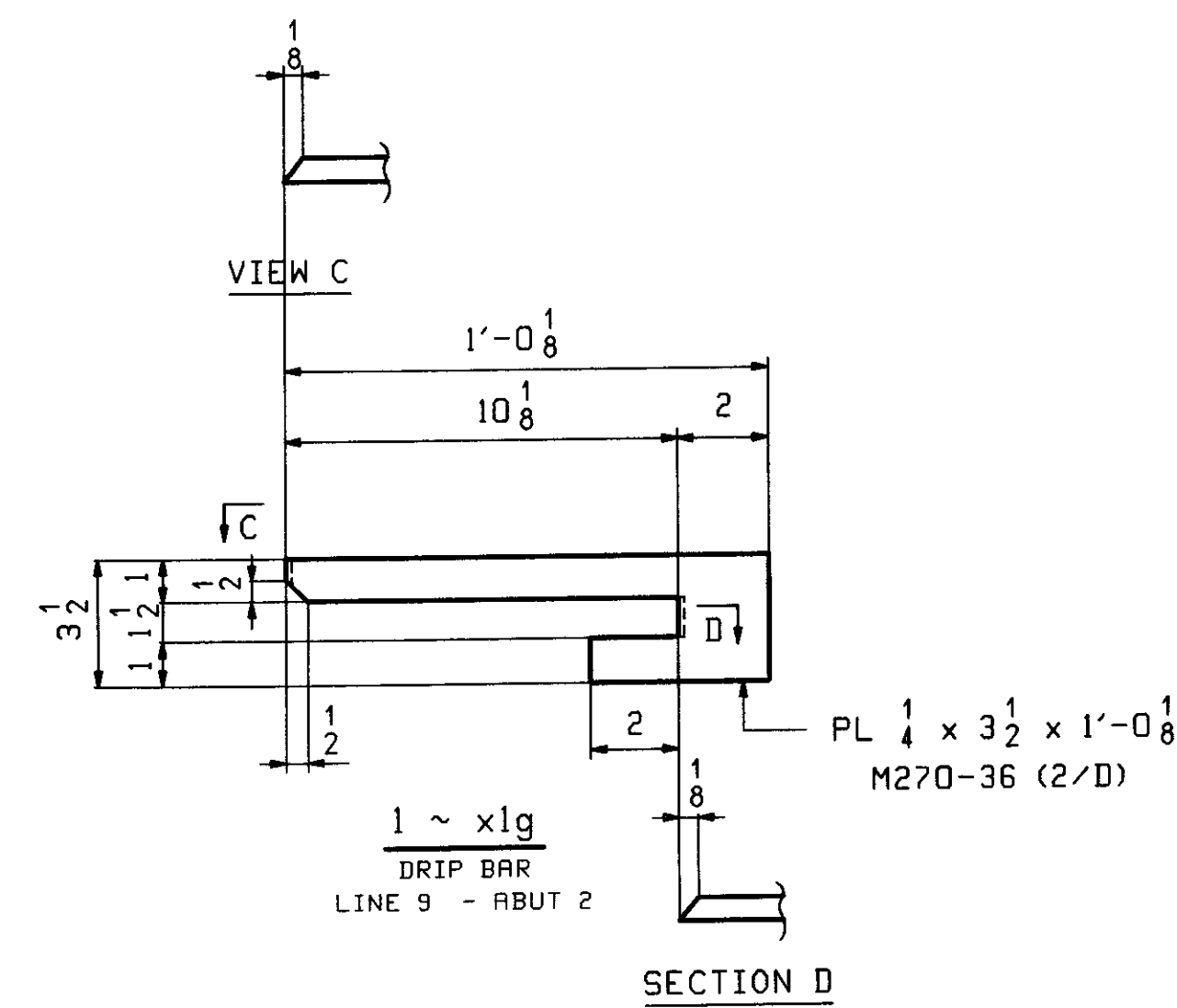
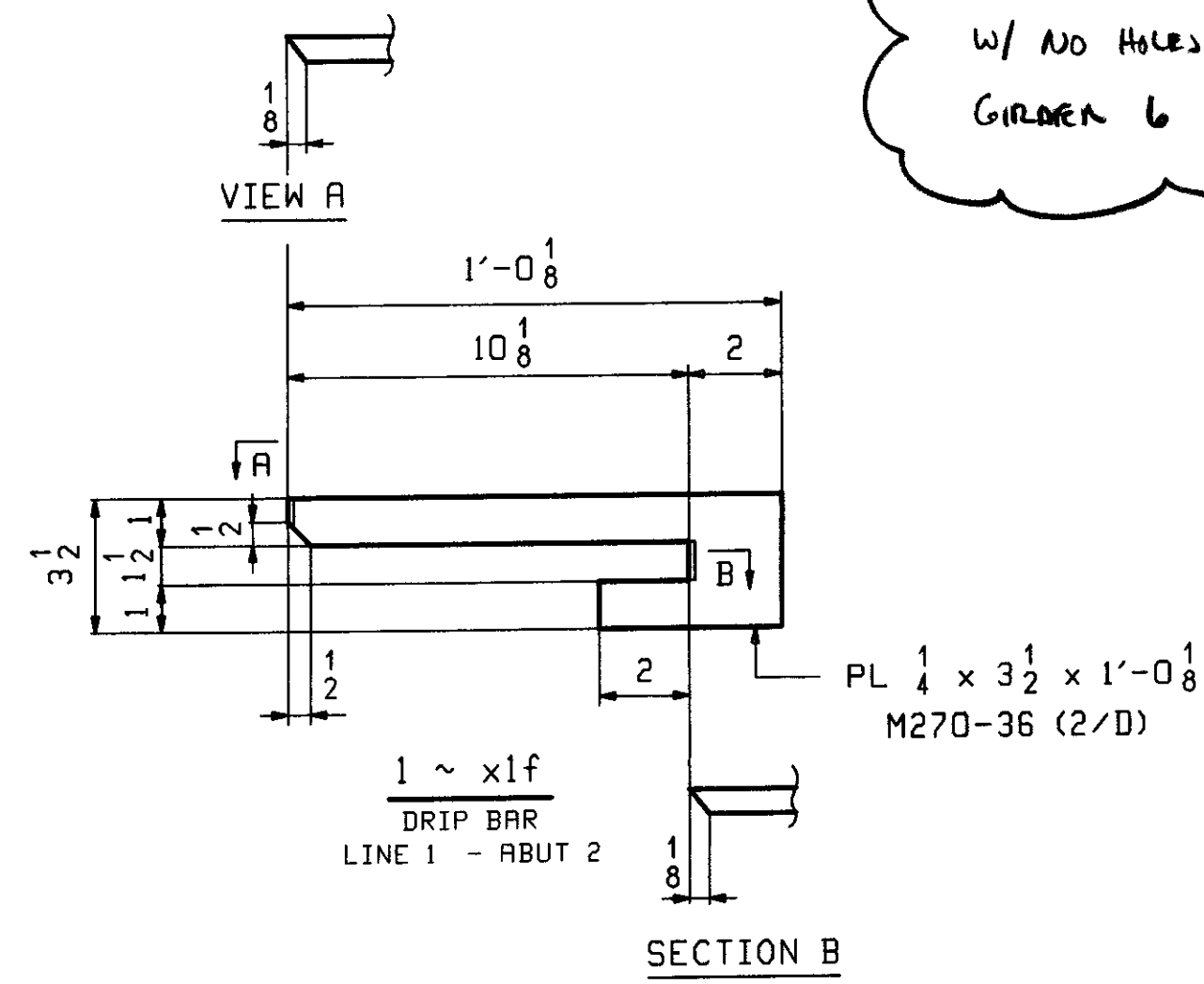


8 ~ x1c
CONN PL - LOW END
WATERLINE



8 ~ x1d
CONN PL - HIGH END
WATERLINE

4 ~ x1b?
SAME SIZE BUT
W/ NO HOLES
GIRDERS 6 ONLY



RECEIVED
 JUN 01 2007
 APPROVED BY [Signature]
 DATE 6/27/07

NOTES:
 ALL MATERIAL SHALL BE M270-50.
 ALL BOLT HOLES SHALL BE 15/16" FOR 7/8" HSB.
 FOR GENERAL NOTES SEE SHEET GNI.

OUT FOR APPROVAL	5-28-07										
OUT FOR APPROVAL											
ISSUED TO SHOP											
FIELD & OFFICE											
REV.	REMARKS	DATE	DWN	CHK	APP	Q.A.	NO.	DIA.	LGT	TYPE	WASHER
	MATERIAL (UN)										SHOP BOLTS
	M270 GR. 50										NONE
SURFACE PREP & PAINT											
SEE PRINT NOTES ON DWG GNI											
DESCRIPTION. GIRDER STANDARDS										DRAWN BY	DATE
JOB: VT ROUTE 15 OVER THE GIRON RIVER										WR	05/17
BRIDGE NO 37										CHKD BY	
TOWN OF JOHNSON, VT. (LAMOILLE COUNTY)										DO	05/19
TENSOR 2718										APPROV BY	
PROJ NO. BRF 030-2(17)5										Q.A.	
CUSTOMER: VT A O T										SUPERVISOR	M J GATTI
CASCO BAY STEEL STRUCTURES, INC.										JOB NO.	DRG. NO.
75 SPRING HILL ROAD SACO, MAINE 04072										323	X1
PHONE (207) 282-7360 FAX. (207) 282-1179										REV.	△