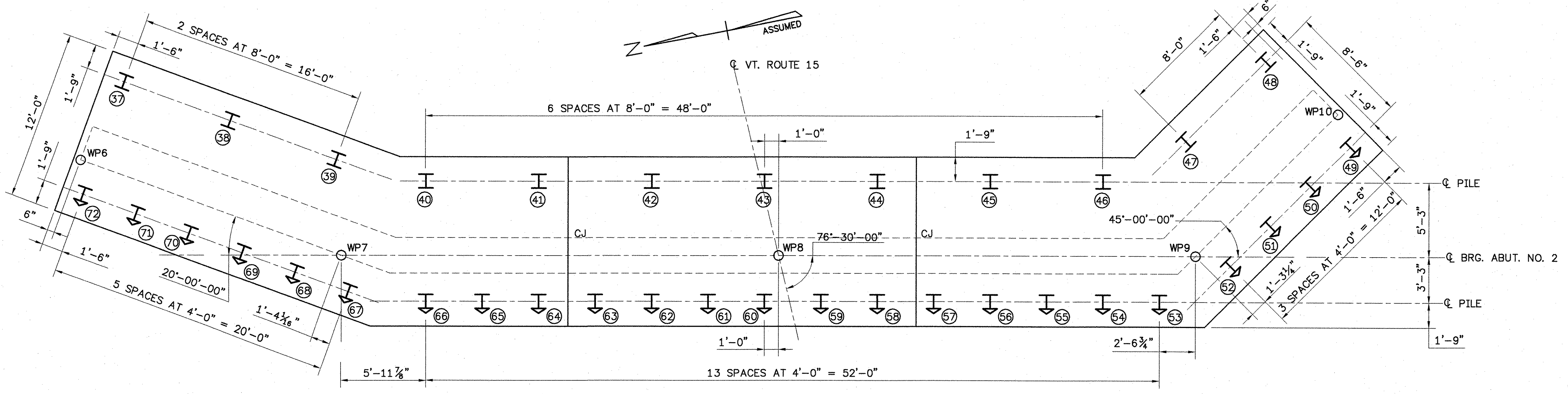


**H-PILE LAYOUT
ABUTMENT NO. 1**
SCALE: 1/4" = 1'-0"

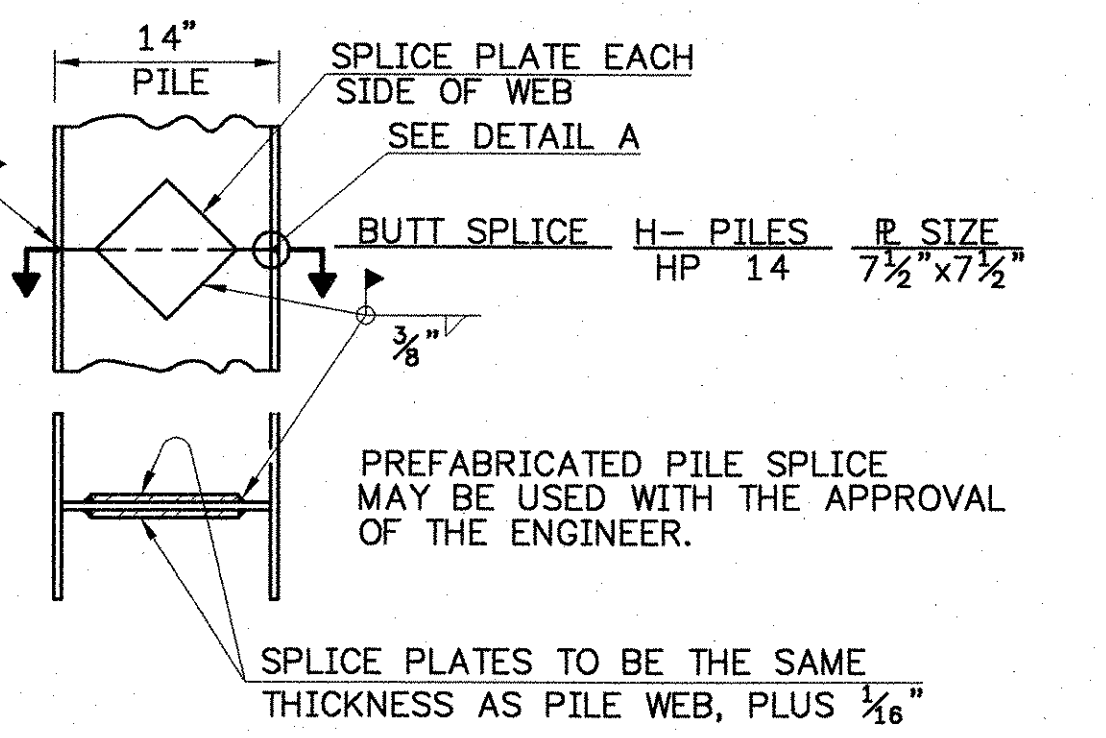


**H-PILE LAYOUT
ABUTMENT NO. 2**
SCALE: 1/4" = 1'-0"

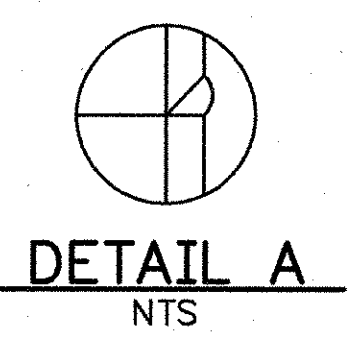
PILE NOTES:

- PILES UNDER 20 FEET SHALL NOT BE SPLICED.
 - PILE CUTOFF ELEVATION: ABUTMENT NO. 1 = 473.00
ABUTMENT NO. 2 = 472.00
 - SEE SHEET 46 OF 85 FOR GENERAL PILE NOTES.
- ⊥ INDICATES VERTICAL HP14x73 PILE
DRIVEN TO ULTIMATE CAPACITY PER
PILE OF 530 KIPS.
- ↘ INDICATES PILE BATTERED 3 ON 12

B-U4a(STEEL BACKING) or
B-U4b (BACK GOUGING) FULL
PENETRATION, FLANGE ONLY (TYP)



DETAIL OF PILE SPLICE
SCALE: 1" = 1'-0"

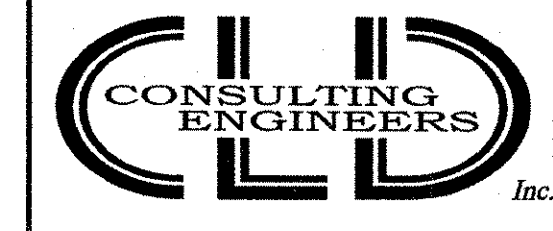


DETAIL A
NTS

SCALE 1/4" = 1'-0"
1 0 2 4 6

**STATE OF VERMONT
AGENCY OF TRANSPORTATION**

Town Of	JOHNSON	Bridge No.	37
Highway No.	VT. ROUTE 15	Log Sta.	
		Surv. Sta.	
VT. ROUTE 15 OVER GHON RIVER			
PILE LAYOUT			
Designed By	R.RICARD	Drawn By	D.DUGAL
Checked By	Date	Bridge Design Supervisor	Date
B.WELCH/R.ROONEY	11/02	J. BYATT	Date 11/06
PROJECT	JOHNSON	PROJECT NO.	BRF 030-2(17)S
I.G.C. Info.			
Bridge Sheet No.		Sheet	68 Of 85



540 Commercial Street • Manchester, NH 03101
(603) 658-3223 • Fax: (603) 658-3802
cld@cldengineers.com • www.cldengineers.com
Maine • New Hampshire • Vermont

9129SPILE.DWG