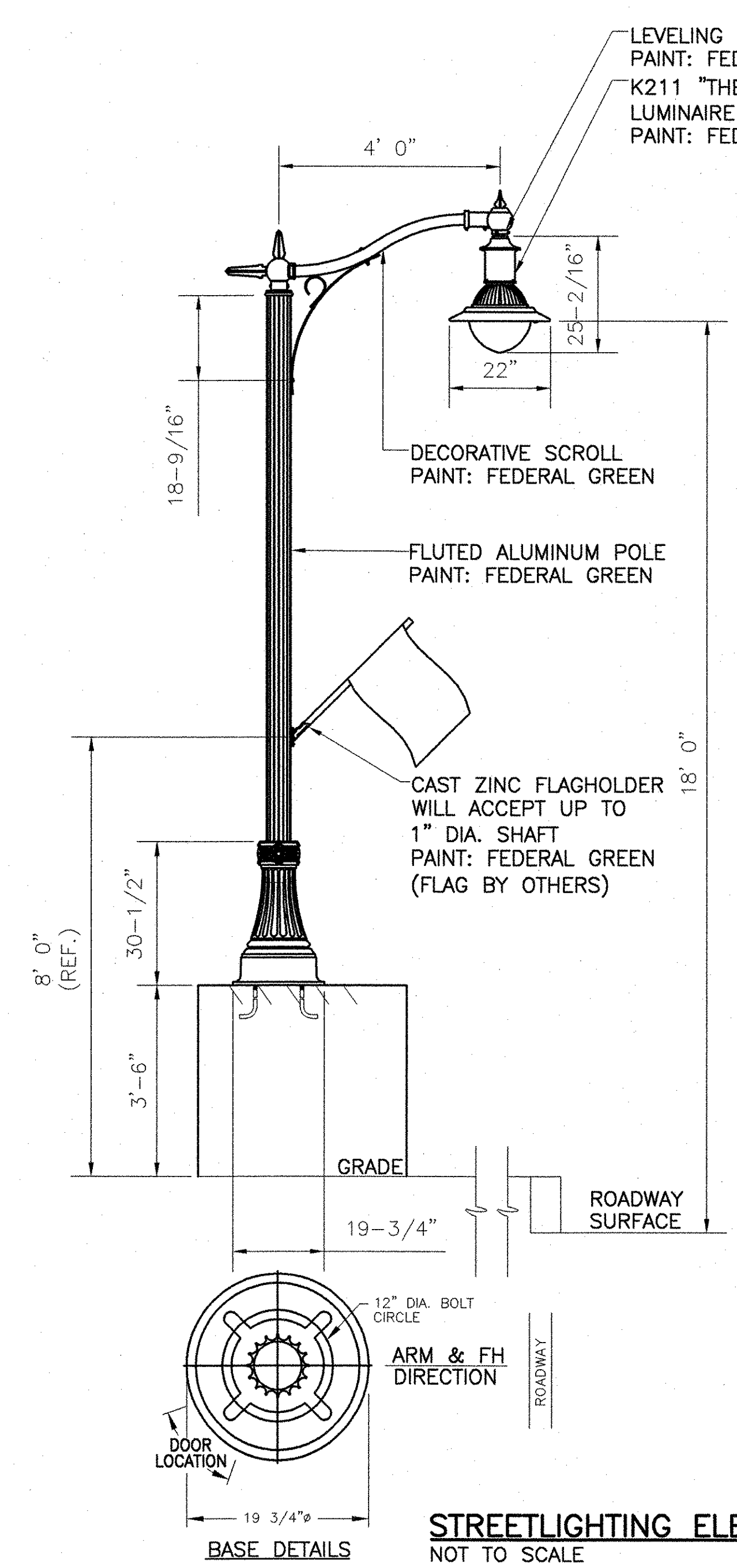
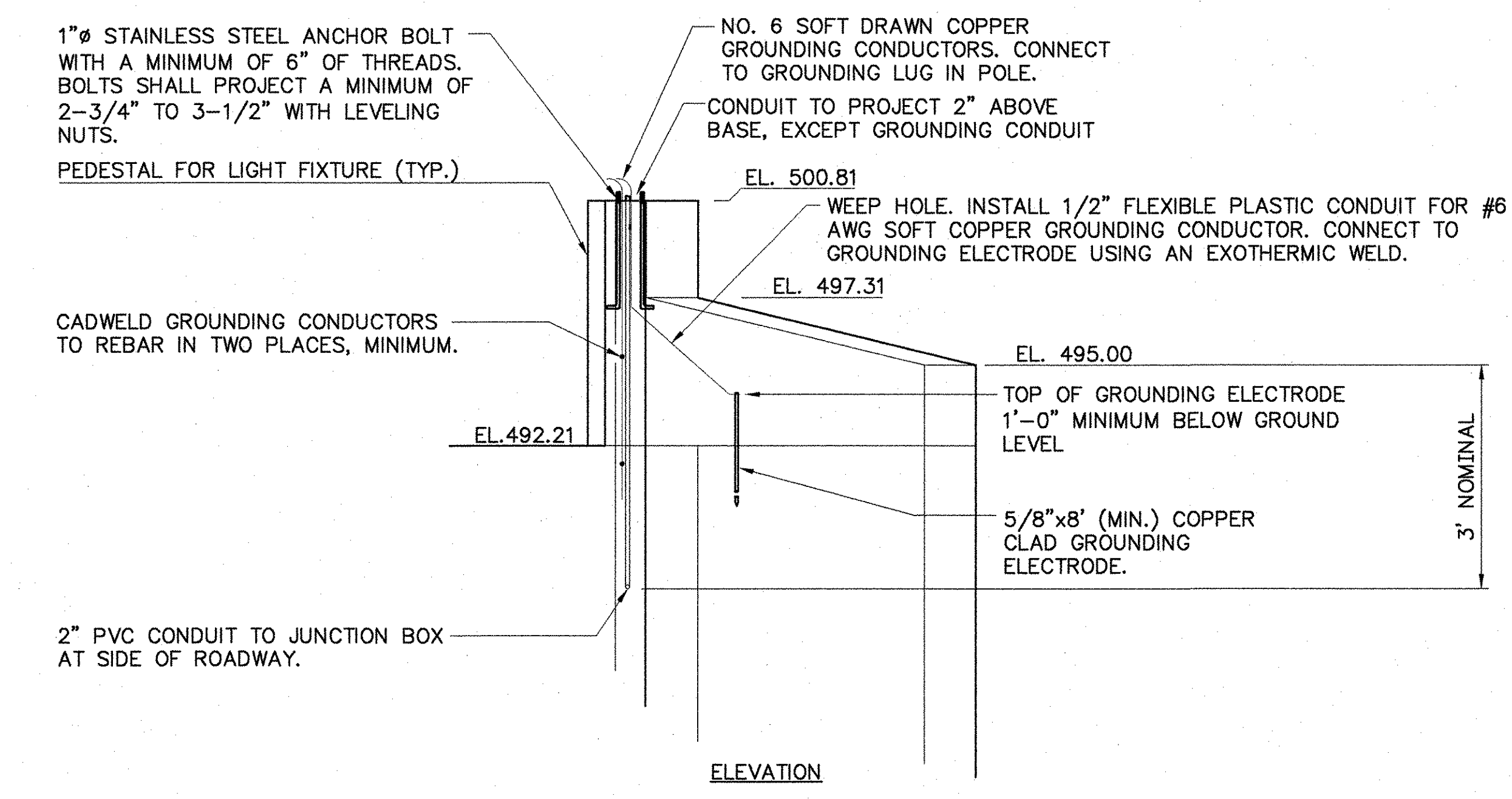
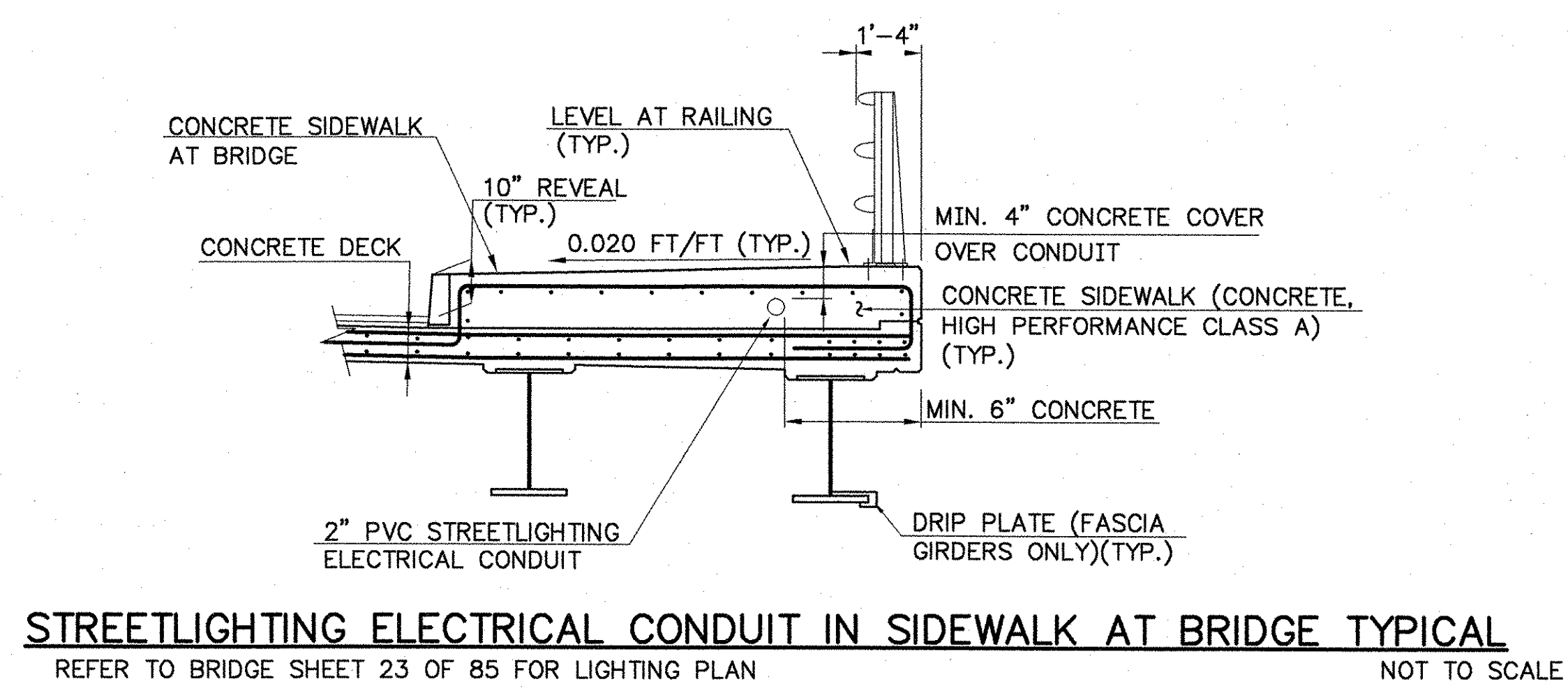
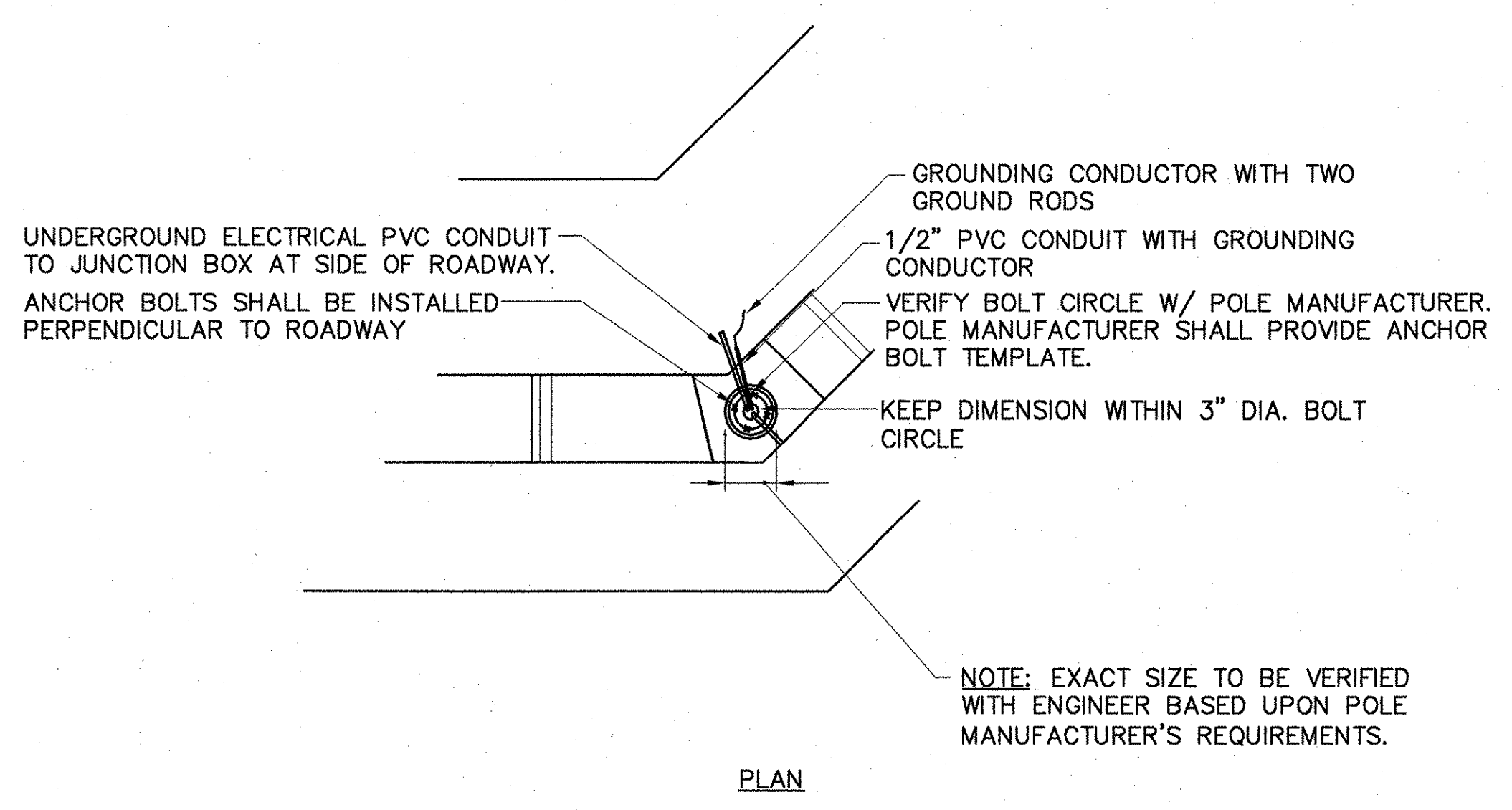


DATE	
BY	
SURVEYED	
PLOTTED	
NOTED	
NO.	
PLAN	
NO.	



DESCRIPTION OF COMPONENTS
DESCRIPTION IS INTENDED TO DESCRIBE QUALITY AND FUNCTION.

MANUFACTURER: KING LUMINAIRE
CATALOG NO.: K211-EGS-III-100(MED)
-MH-120(MT)-KPL20

OPTICAL SYSTEM: EXTERNAL GLASS
IES CLASS: TYPE III
WATTAGE: 100W
SOCKET TYPE: MEDIUM
LIGHT SOURCE: METAL HALIDE
LINE VOLTAGE: 120V (MULTI-TAP)
PAINT: FEDERAL GREEN
OPTIONS: KPL20 LEVELING DEVICE

BALLAST INFORMATION:
BALLAST TYPE: HX-HPF
BALLAST MANU.: UNIVERSAL
CATALOG NUMBER: M150MLTLC3M
OPTIONS: QUICK DISCONNECT

ARM SPECIFICATIONS:
CATALOG NO.: KA30-T-1-4'
MATERIAL: ALUMINUM
PAINT: FEDERAL GREEN

POLE SPECIFICATIONS:
CATALOG NO.: KM19FE-16-FH
MATERIAL: ALUM. SHAFT CAST ALUM. BASE
PAINT: FEDERAL GREEN
TOP SIZE: 6 1/2"
POLE HEIGHT: FIELD VERIFY POLE HEIGHT
ANCHOR BOLTS: (4) 1" x 36" H.D.
BOLT CIRCLE: 12" ø
OPTIONS: FLAG HOLDER

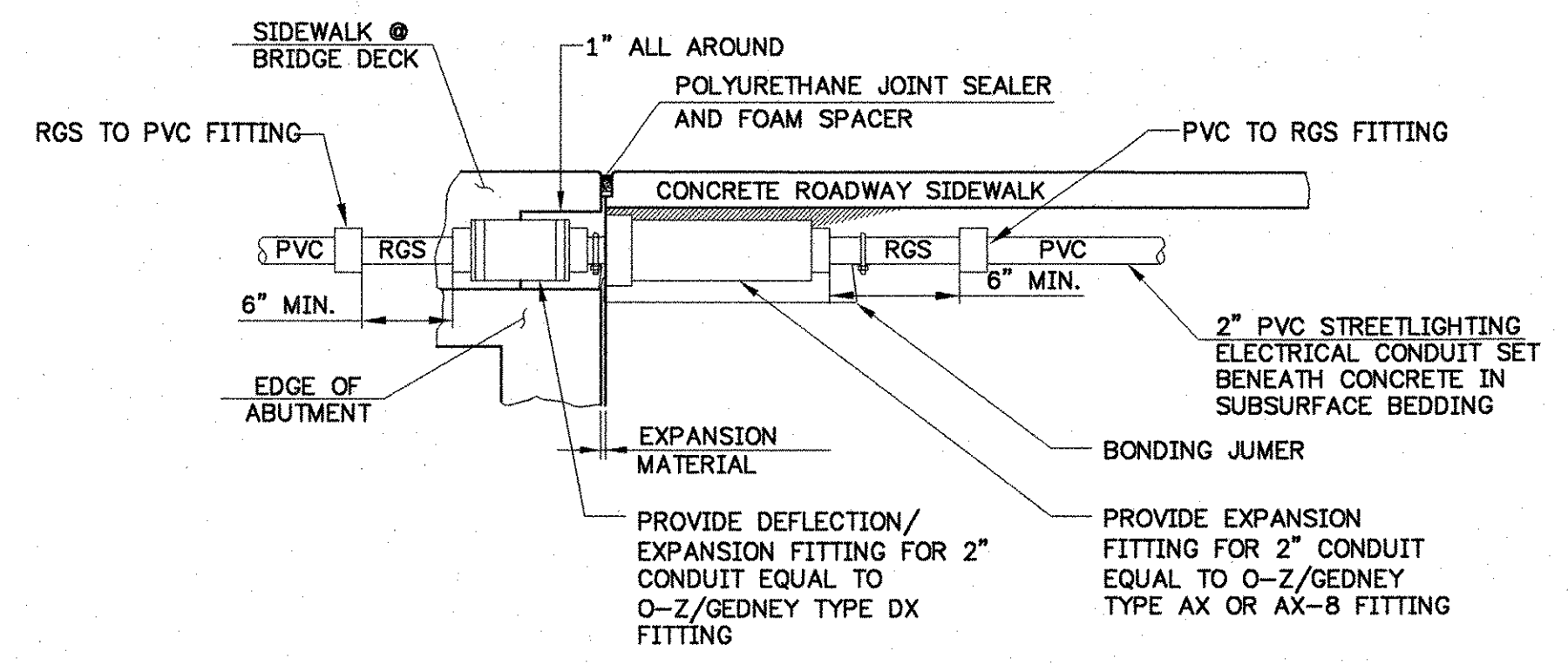
PROVIDE PHOTOMETRICS AS PART OF PRODUCT SUBMITTALS

GENERAL NOTES AND SPECIFICATIONS

1. THE SCOPE OF WORK IS TO PROVIDE ALL LABOR, MATERIALS, SERVICES, SUPPLIES, TOOLS, EQUIPMENT, TRANSPORTATION, AND FACILITIES NECESSARY TO FURNISH AND INSTALL COMPLETE ELECTRICAL WORK AS CALLED FOR ON THE DRAWINGS, SPECIFIED, OR AS MAY REASONABLY BE IMPLIED AS BEING INCIDENTAL TO THIS WORK.
2. SECURE AND PAY COSTS OF PERMITS, CERTIFICATES, LICENSES, INSPECTIONS, AND APPROVALS.
3. ALL MATERIALS AND INSTALLATION SHALL BE IN ACCORDANCE WITH THE LATEST EDITION OF THE NATIONAL ELECTRICAL CODE, AND ALL CODES, REGULATIONS AND REQUIREMENTS OF ALL MUNICIPAL, STATE, FEDERAL, UTILITY, AND OTHER PUBLIC OR PRIVATE AUTHORITIES WHICH HAVE JURISDICTION. IN EACH CASE, CODES ARE MINIMUM REQUIREMENTS.
4. SHOP DRAWINGS: SUBMIT COMPLETE CATALOG INFORMATION FOR ALL MATERIALS AND EQUIPMENT TO BE PURCHASED AND USED ON THIS PROJECT, AS SPECIFIED ON THE DRAWINGS. DO NOT INSTALL MATERIALS OR EQUIPMENT WITHOUT APPROVAL BY THE ENGINEER. UNAPPROVED MATERIAL ALREADY INSTALLED SHALL BE SUBJECT TO REMOVAL AND REPLACEMENT WITH APPROVED MATERIALS AT THE CONTRACTOR'S EXPENSE.
5. MATERIALS AND EQUIPMENT SHALL BE LISTED BY UNDERWRITERS' LABORATORIES AND SHALL BE INSTALLED IN ACCORDANCE WITH SUCH LISTINGS.
6. ELECTRICAL SERVICES SHALL BE 100A, 120/240V, SINGLE PHASE, THREE WIRE SERVICE. METER SOCKET SHALL BE PER UTILITY REQUIREMENTS. SEE VAOT STANDARDS E-175 DETAIL 1 FOR METER/DISCONNECT STANCHION. ALL SERVICE ENTRANCE EQUIPMENT SHALL BE RATED 22 KAIC (MIN.). STANCHION SHALL INCLUDE: A 12 CRK PANEL WITH A 100A, 240V, 2 POLE MAIN BREAKER. PROVIDE (6) 20A, 120V, 1 POLE BREAKERS FOR STREET LIGHTING AND (2) 30A, 240V, 2 POLE BREAKERS WITH GROUND FAULT PROTECTION FOR PERMANENT BRIDGE CROSSING HEAT TRACE SYSTEM. PROVIDE (2) 30A, 120V, 1 POLE BREAKERS FOR SPARE. NEMA 4X ENCLOSURE FOR THE HEAT TRACE SYSTEM SHALL BE LOCATED ADJACENT TO THE ELECTRICAL PANEL. SEE SHEET 22 FOR DETAIL OF HEAT TRACE SYSTEM.
7. INSTALLATION SHALL BE MADE IN ACCORDANCE WITH MANUFACTURER'S RECOMMENDATIONS.
8. CONTRACTOR TO CONTACT DIGSAFE IN VERMONT STATE PRIOR TO COMMENCING WORK.
9. CONTRACTOR TO CONTACT UTILITY COMPANY FOR COORDINATION OF NEW ELECTRICAL SERVICE.
10. METER/DISCONNECT STANCHIONS SHALL INCLUDE MAIN SERVICE DISCONNECT (2 POLE, 80A, 240V, 1 PHASE) AND (6) SIX BRANCH CIRCUIT BREAKERS (1 POLE, 20A, 120V). ALL SERVICE ENTRANCE EQUIPMENT SHALL BE RATED 22 KAIC (MIN.).
11. ORNAMENTAL STREETLIGHT SHALL BE 100W (MAX.) METAL HALIDE, CUTOFF, TYPE III DISTRIBUTION, LUMINAIRE SOURCE MOUNTED AT 18FT ABOVE ROADWAY SURFACE. LIGHTING SHALL PROVIDE A MINIMUM MAINTAINED ILLUMINATION ON THE ROADWAY SURFACE (FROM STATION 102+75 TO STATION 104+10) OF 0.8 FOOTCANDLES.
12. MAXIMUM OF 270 DEGREES IN TOTAL BEND SHALL BE PERMITTED IN SINGLE RUN OF CONDUIT.
13. LIGHTS SHALL BE FUSED AT BASE WITH Y-TYPE FUSE KIT (EQUIVALENT OF HOMAC/FLOOD SEAL: FYC-6 AND 10 AMP FUSE).
14. UTILIZE DUAL-RATED PARALLEL TAP CONNECTORS AT POLE BASES EQUIVALENT TO ILSCO GTA SERIES WITH INSULATED COVERS.
15. UTILIZE APPROVED DUAL-RATED PARALLEL TAP CONNECTOR EQUAL TO ILSCO PED SERIES WATERTIGHT CONNECTOR. SUITABLE FOR DIRECT BURIAL IN JUNCTION BOXES, HANDHOLES AND MANHOLES.

STATE OF VERMONT AGENCY OF TRANSPORTATION		
Town Of	JOHNSON	Bridge No. 37
		Log Sta.
Highway No.	VT ROUTE 15	Surv. Sta.
VT ROUTE 15 OVER THE GHON RIVER		
LIGHTING DETAILS		
Designed By	L. BLACK	Drawn By P. HILL
Checked By	Date	Bridge Design Supervisor J Byatt Date 11/06
PROJECT	JOHNSON	PROJECT NO. BRF 030-2(17)S
I.G.C. Info.		
Bridge Sheet No.		Sheet 66 Of 85

STREETLIGHTING CONDUIT AT TRANSITION TO CONCRETE ROADWAY SIDEWALK
NOT TO SCALE



STREETLIGHTING ELECTRICAL CONDUIT AT ABUTMENTS
NOT TO SCALE

