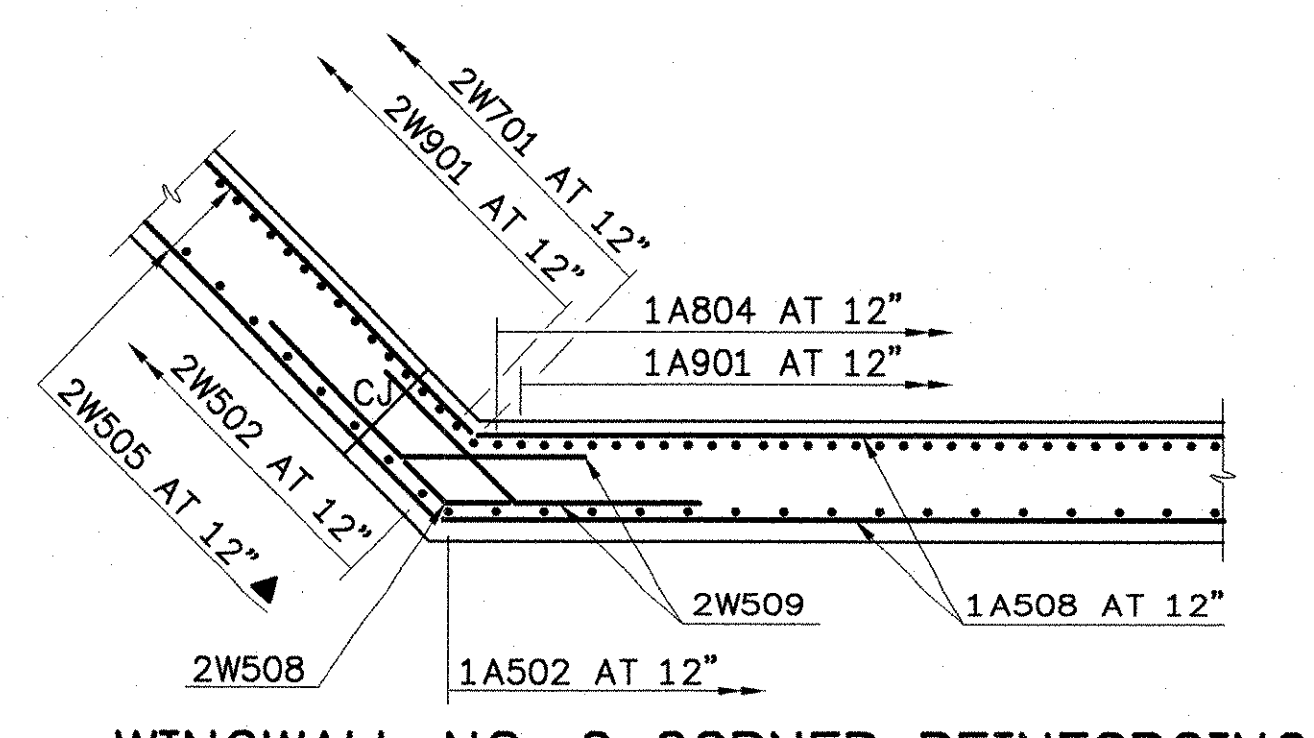
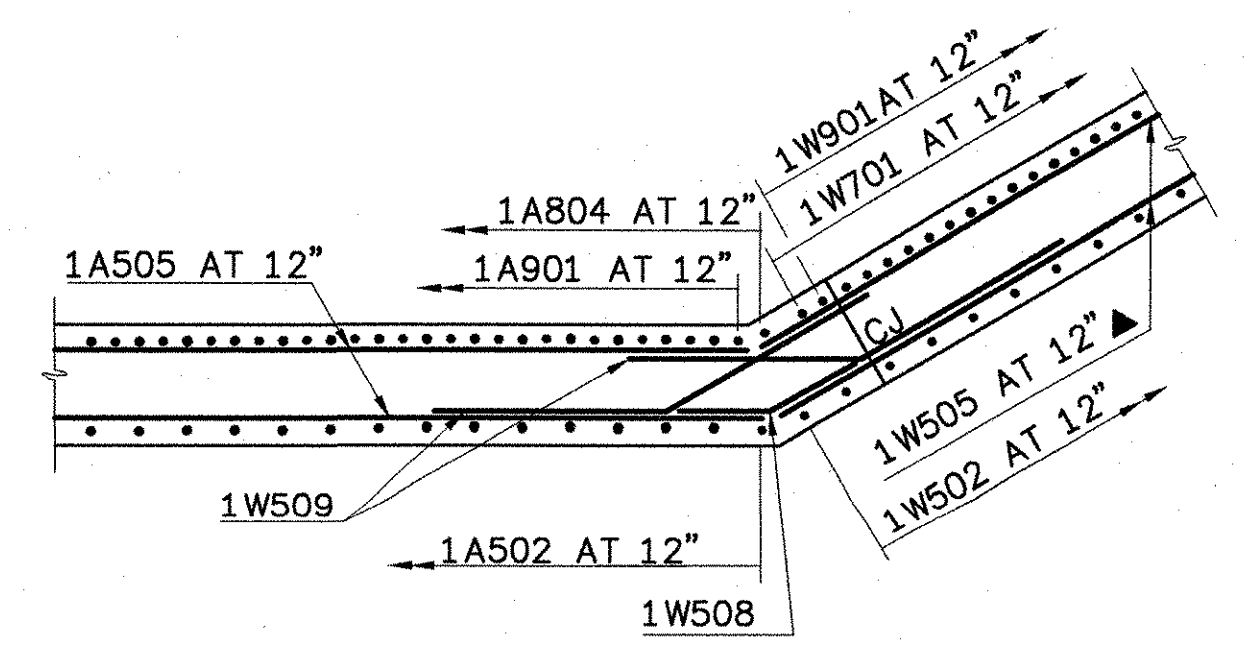


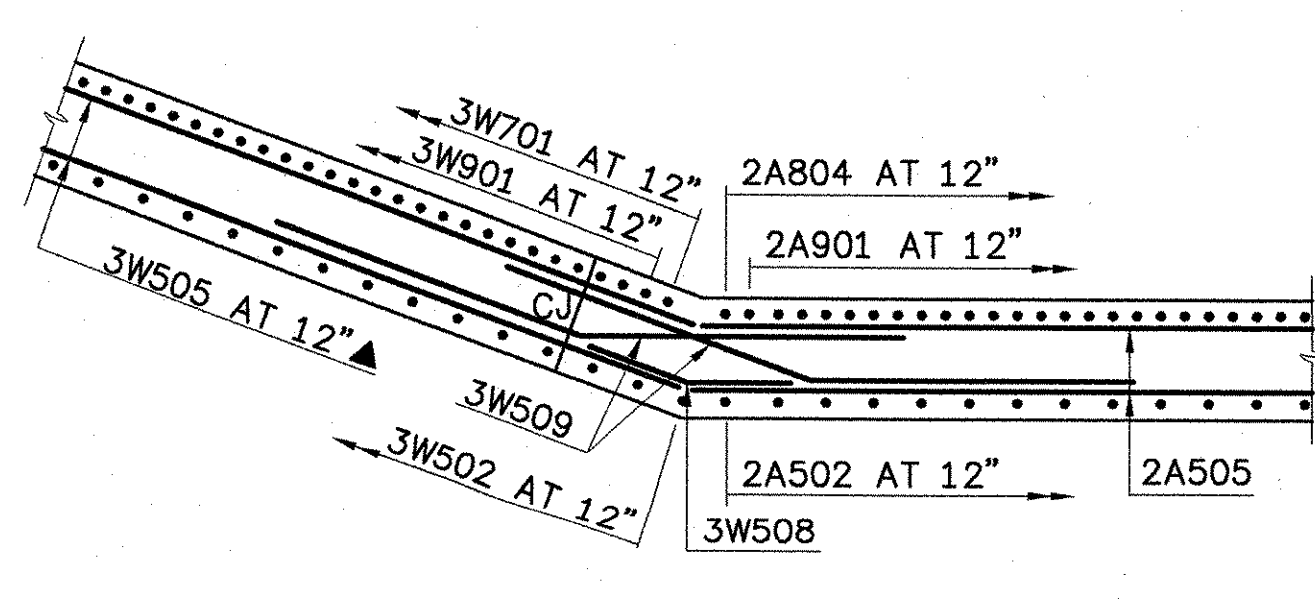
NOTES:
 NF = NEAR FACE
 FF = FAR FACE
 EF = EACH FACE
 ▲ = CUT TO FIT IN FIELD



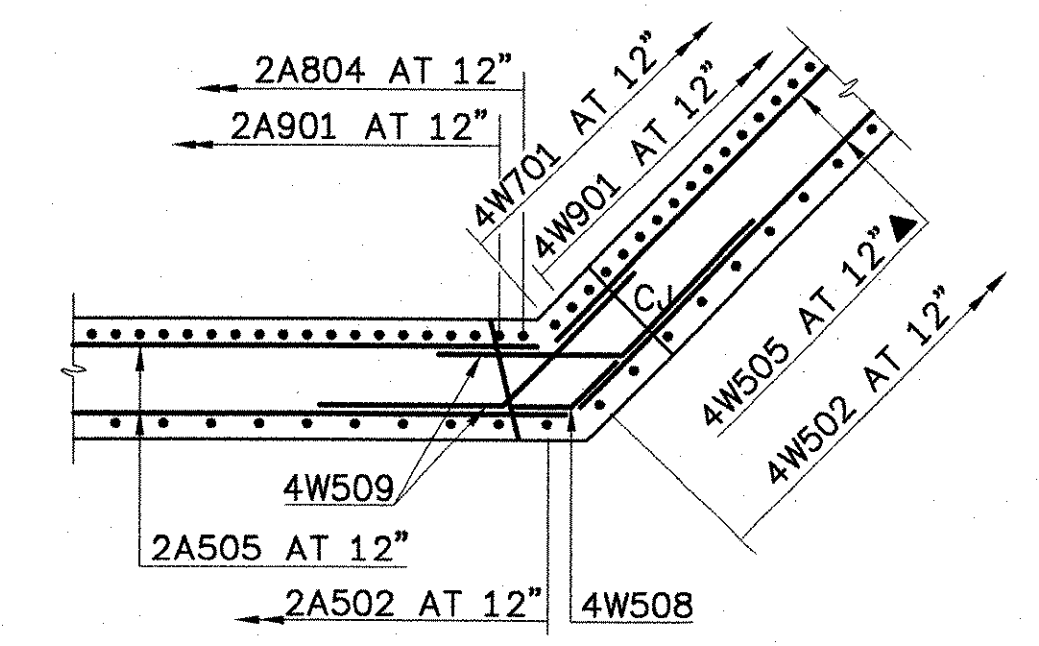
WINGWALL NO. 2 CORNER REINFORCING SECTION B-B
 SCALE: 1/4" = 1'-0"



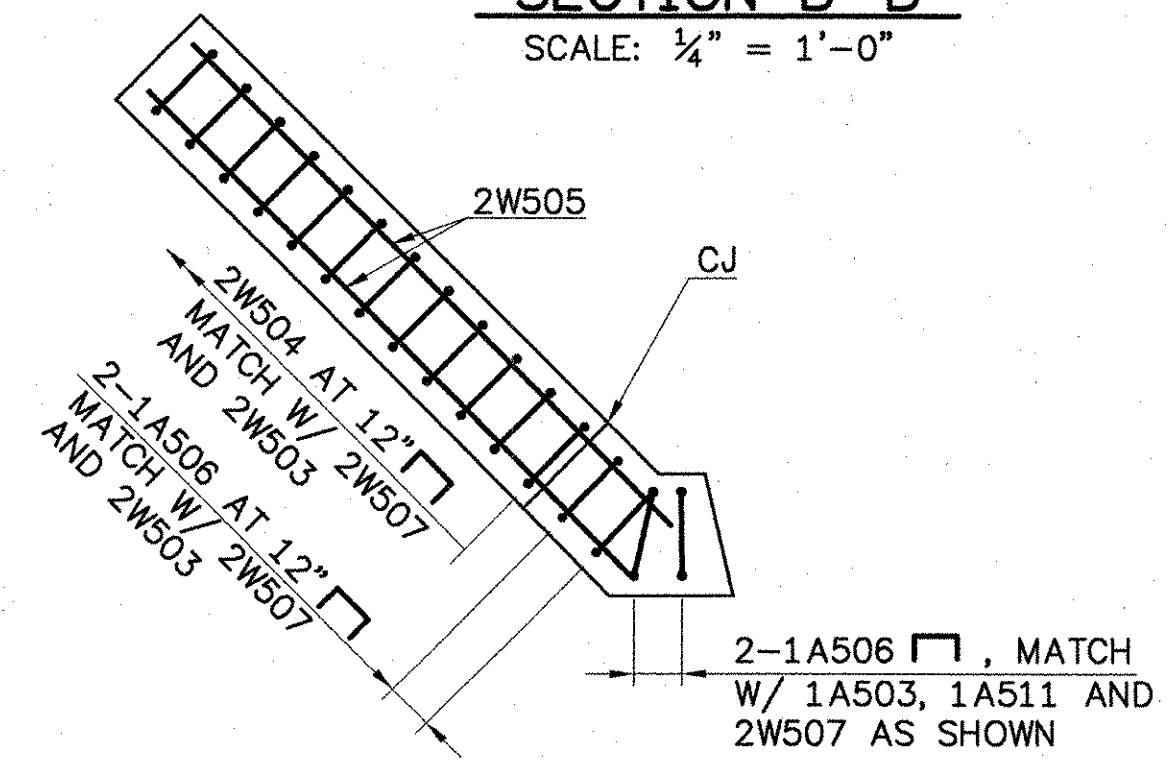
WINGWALL NO. 1 CORNER REINFORCING SECTION A-A
 SCALE: 1/4" = 1'-0"



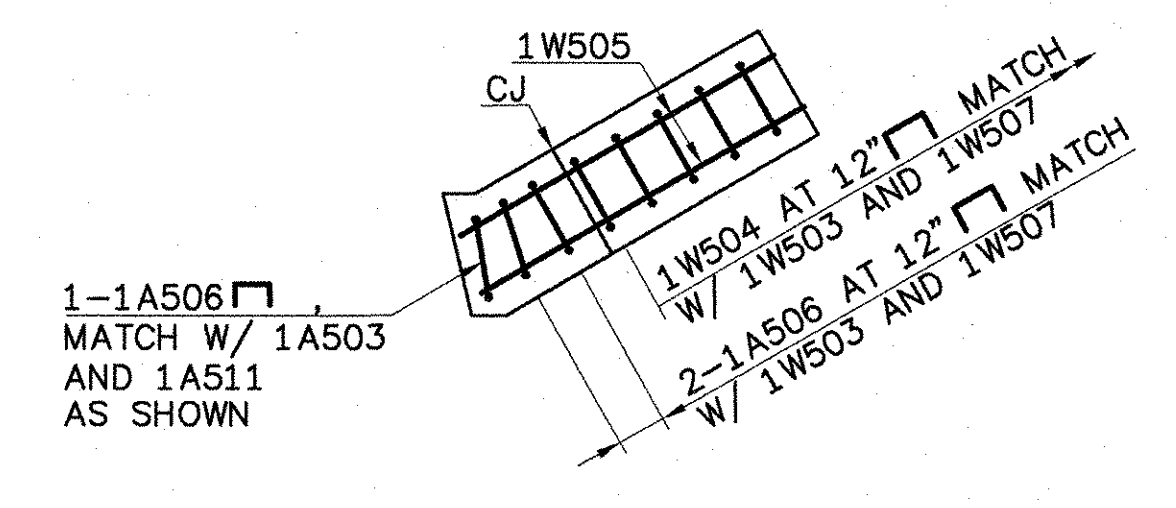
WINGWALL NO. 3 CORNER REINFORCING SECTION C-C
 SCALE: 1/4" = 1'-0"



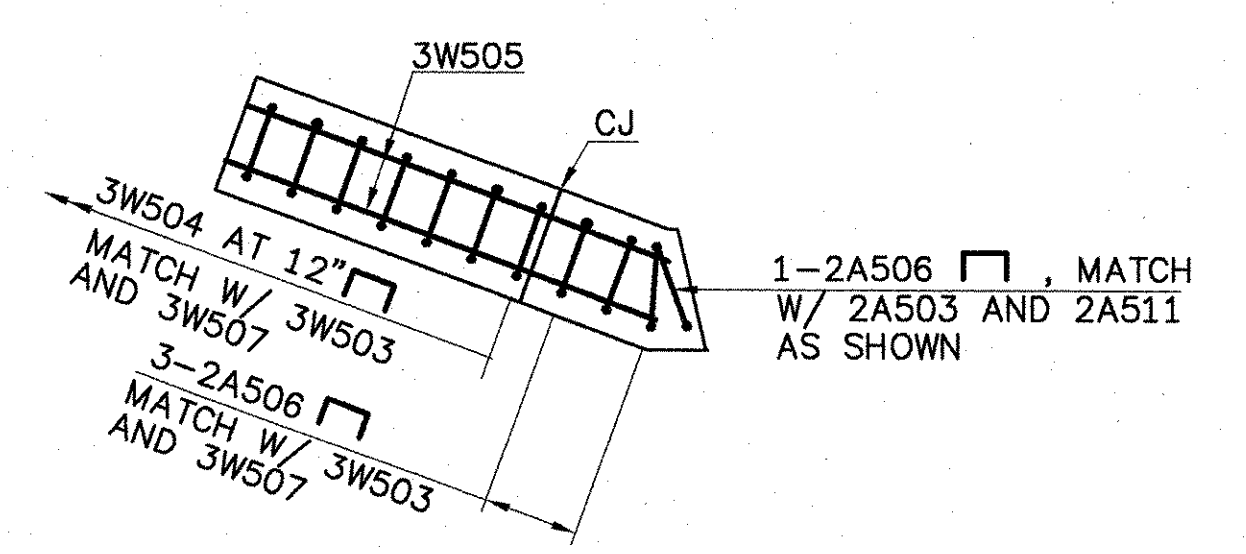
WINGWALL NO. 4 CORNER REINFORCING SECTION D-D
 SCALE: 1/4" = 1'-0"



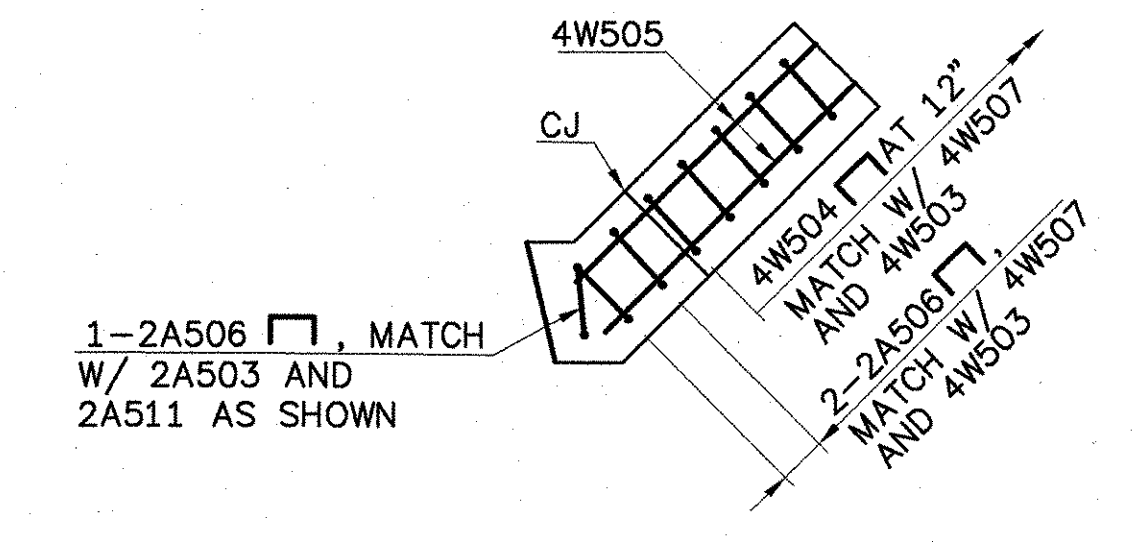
WINGWALL NO. 2 CORNER REINFORCING SECTION F-F
 SCALE: 1/4" = 1'-0"



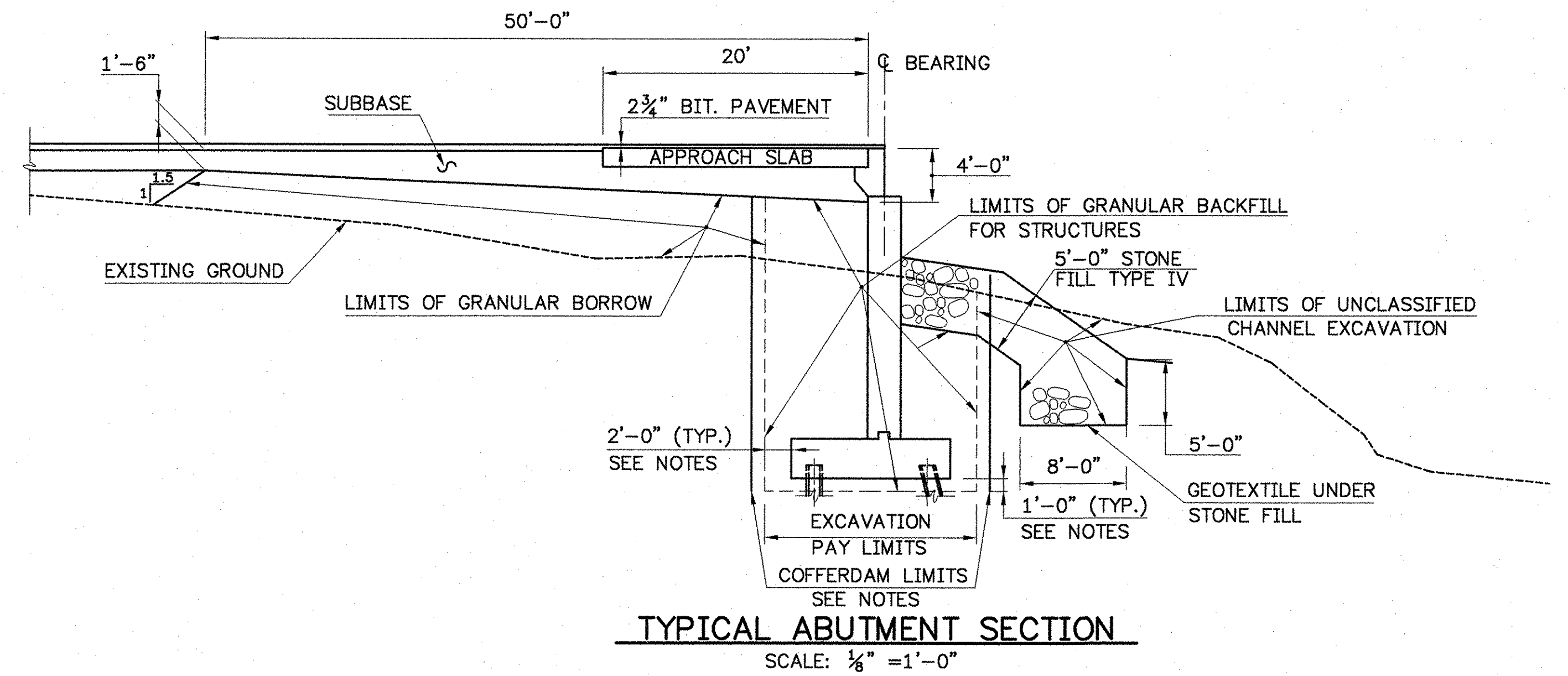
WINGWALL NO. 1 CORNER REINFORCING SECTION E-E
 SCALE: 1/4" = 1'-0"



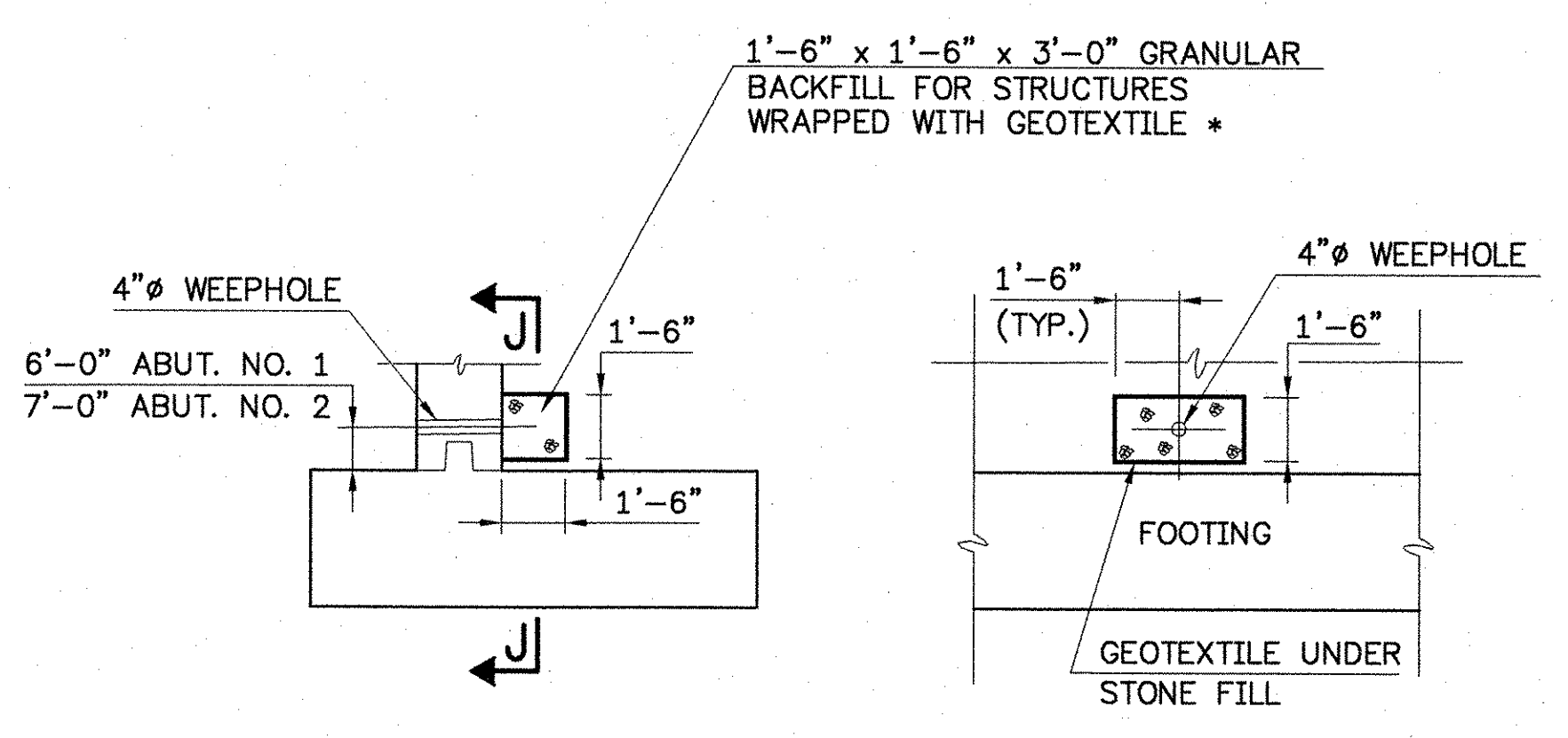
WINGWALL NO. 3 CORNER REINFORCING SECTION G-G
 SCALE: 1/4" = 1'-0"



WINGWALL NO. 4 CORNER REINFORCING SECTION H-H
 SCALE: 1/4" = 1'-0"

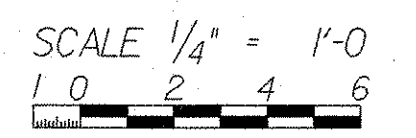


TYPICAL ABUTMENT SECTION
 SCALE: 1/8" = 1'-0"



TYPICAL WEEPHOLE DETAIL SECTION J-J
 SCALE: 1/4" = 1'-0"

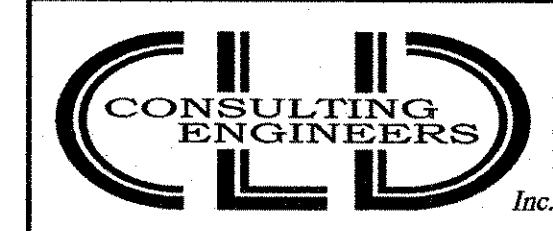
*NOTE: THIS WILL BE PAID FOR UNDER THE ITEMS "GRANULAR BACKFILL FOR STRUCTURES" AND "GEOTEXTILE UNDER STONE FILL".



COFFERDAM NOTES:

1. COFFERDAM LIMITS TO BE DETERMINED BY THE CONTRACTOR.
2. FOR THE PURPOSES OF ESTIMATING EARTHWORK QUANTITIES, THE LIMITS OF THE COFFERDAM HAVE BEEN ASSUMED TO BE 2'-0" OUTSIDE THE PERIMETER OF THE FOOTING.
3. ONE FOOT OF UNDERCUT AS DETERMINED BY THE RESIDENT ENGINEER.
4. IF A COFFERDAM IS CONSTRUCTED WHICH IS MORE THAN THE INDICATED MINIMUM DISTANCE OUTSIDE THE FOOTING LIMITS, PAYMENT FOR ALL UNCLASSIFIED CHANNEL EXCAVATION, INCLUDING THAT PORTION WHICH IS INSIDE THE COFFERDAM BUT OUTSIDE THE MINIMUM COFFERDAM LIMITS SHOWN WILL BE MADE AT THE CONTRACT UNIT PRICE FOR UNCLASSIFIED CHANNEL EXCAVATION.

STATE OF VERMONT AGENCY OF TRANSPORTATION		
Town Of	JOHNSON	Bridge No. 37
Highway No.	VT. ROUTE 15	Log Sta.
		Surv. Sta.
VT. ROUTE 15 OVER GIHON RIVER		
SUBSTRUCTURE DETAILS		
Designed By	R.RICARD	Drawn By D.DUGAL
Checked By	Date	Bridge Design Supervisor
B.WELCH/R.RICARD	11/02	J. BYATT Date 11/06
PROJECT	JOHNSON	PROJECT NO. BRF 030-2(17)S
I.G.C. Info.		
Bridge Sheet No.		Sheet 65 Of 85



540 Commercial Street • Manchester, NH 03101
 (603) 668-8223 • Fax: (603) 668-8802
 cld@cldeengineers.com • www.cldeengineers.com
 Maine • New Hampshire • Vermont

9/12/06/ABUT.DWG