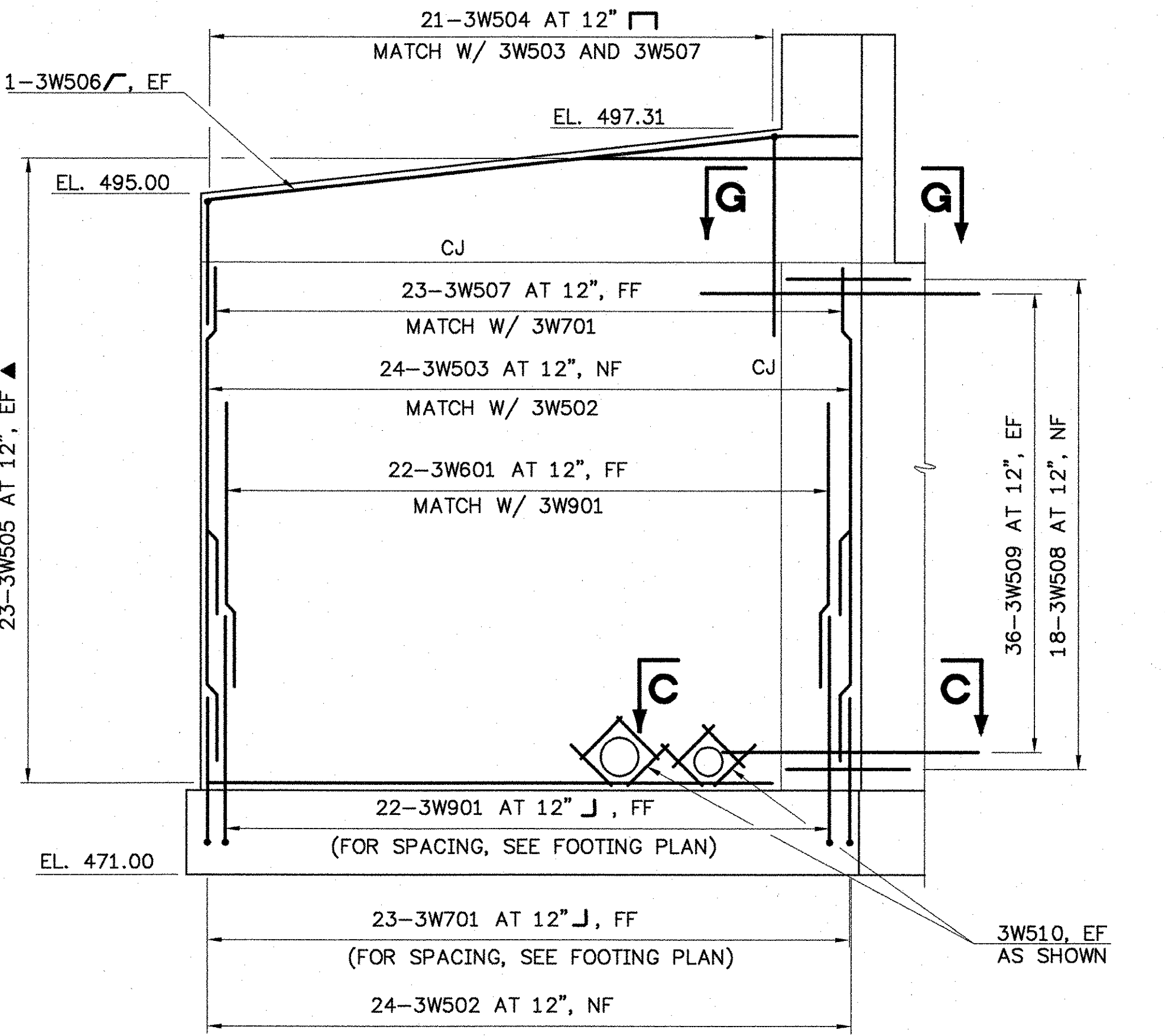
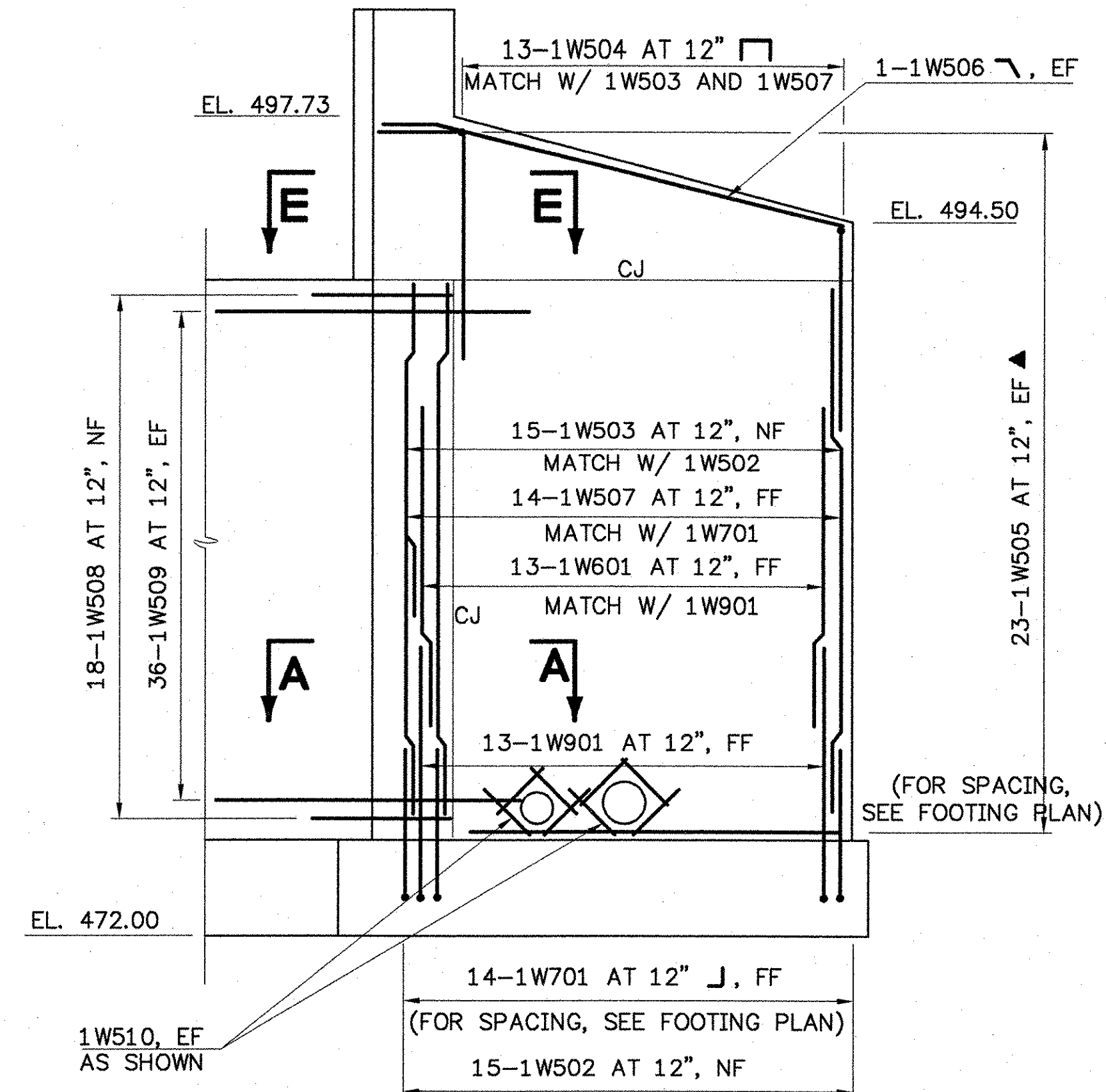


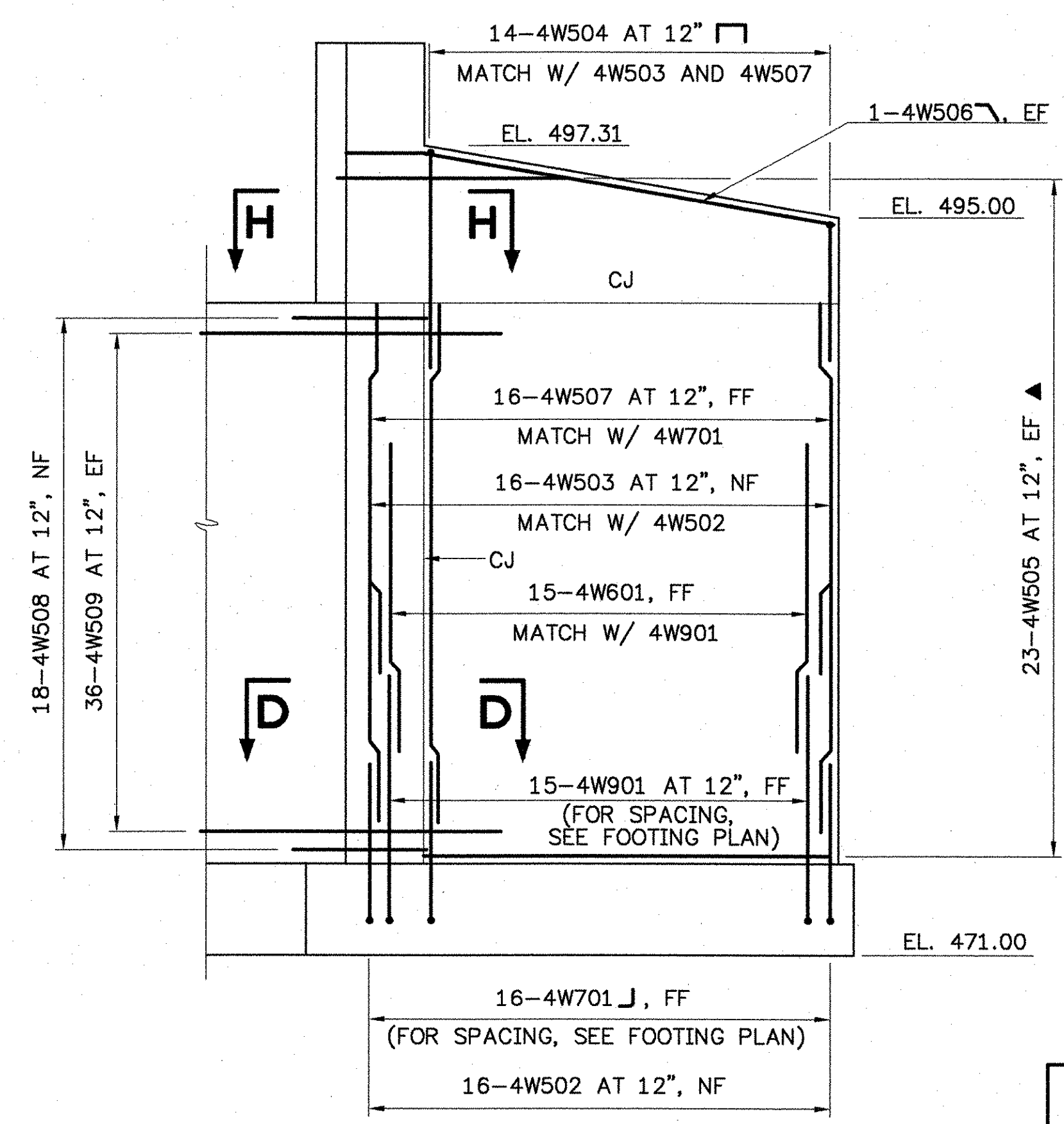
WINGWALL NO. 2 ELEVATION
SCALE: 1/4" = 1'-0"



WINGWALL NO. 3 ELEVATION
SCALE: 1/4" = 1'-0"

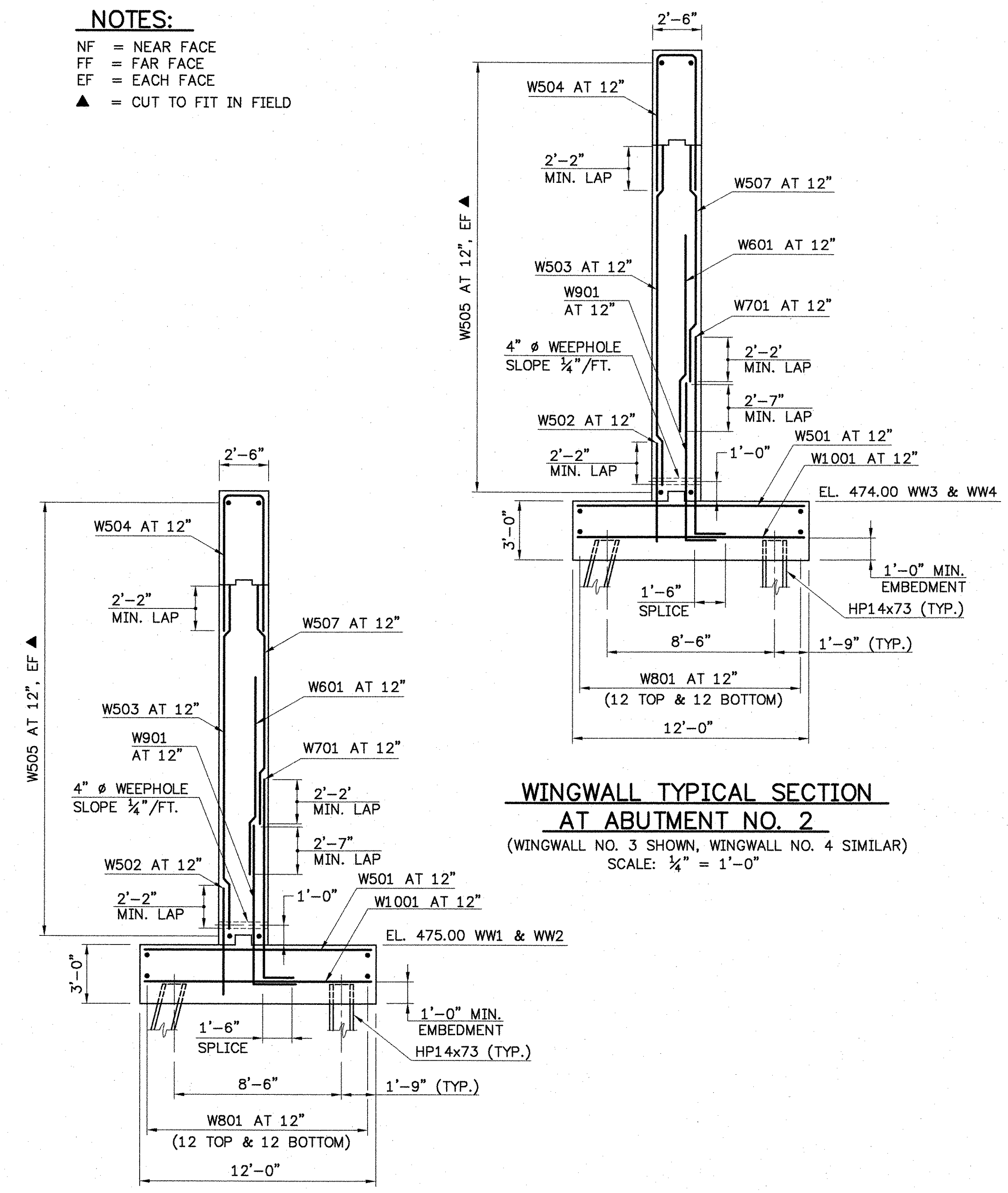


WINGWALL NO. 1 ELEVATION
SCALE: 1/4" = 1'-0"



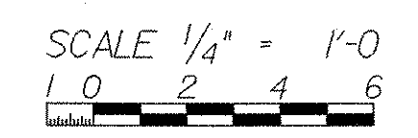
WINGWALL NO. 4 ELEVATION
SCALE: 1/4" = 1'-0"

NOTES:
NF = NEAR FACE
FF = FAR FACE
EF = EACH FACE
▲ = CUT TO FIT IN FIELD



WINGWALL TYPICAL SECTION AT ABUTMENT NO. 1
(WINGWALL NO. 1 SHOWN, WINGWALL NO. 2 SIMILAR)
SCALE: 1/4" = 1'-0"

WINGWALL TYPICAL SECTION AT ABUTMENT NO. 2
(WINGWALL NO. 3 SHOWN, WINGWALL NO. 4 SIMILAR)
SCALE: 1/4" = 1'-0"



STATE OF VERMONT AGENCY OF TRANSPORTATION		
Town Of	JOHNSON	Bridge No. 37
Highway No.	VT. ROUTE 15	Log Sta.
		Surv. Sta.
VT. ROUTE 15 OVER GIHON RIVER		
WINGWALL DETAILS		
Designed By	R.RICARD	Drawn By D.DUGAL
Checked By	Date	Bridge Design Supervisor
B.WELCH/R.ROONEY	11/02	J. BYATT Date 11/06
PROJECT	JOHNSON	PROJECT NO. BRF 030-2(17)S
I.G.C. Info.		
Bridge Sheet No.		Sheet 64 Of 85

3/12/96ABUT.DWG