

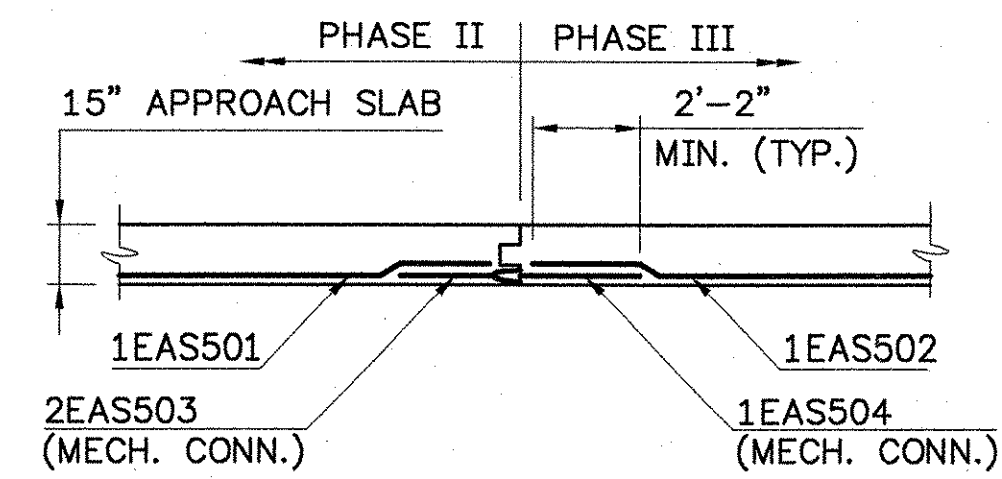
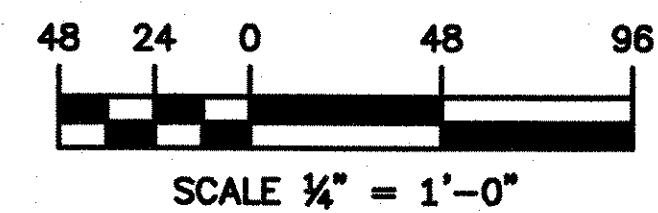
**APPROACH SLAB NO. 1**

**APPROACH SLAB NO. 2**

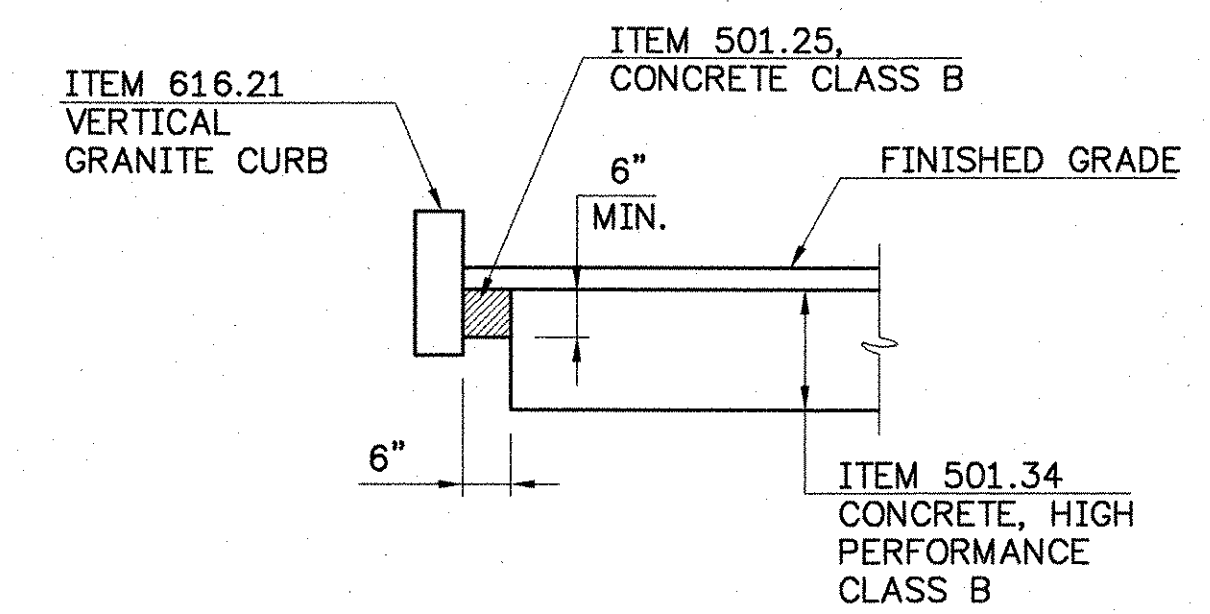
**APPROACH SLAB PLAN**

SCALE: 1/4" = 1'-0"

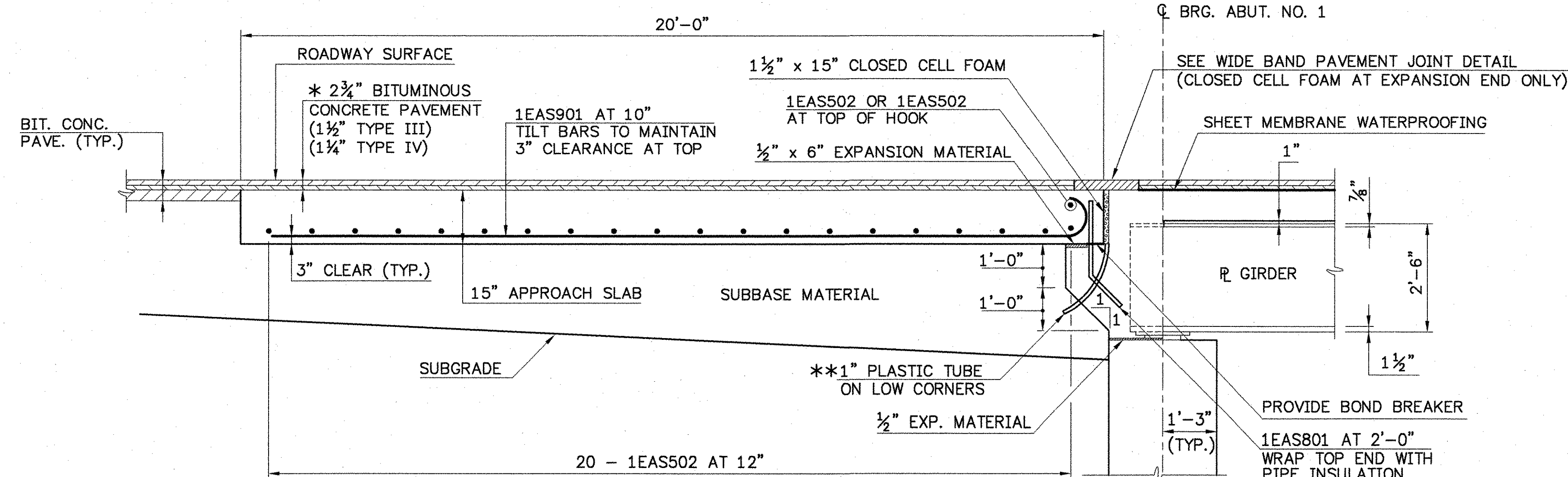
**NOTE:**  
CONSTRUCTION OF APPROACH SLABS SHALL COINCIDE WITH THE RESPECTIVE SUPERSTRUCTURE PHASE.



**SECTION A-A**  
(APPROACH SLAB NO. 2 SIMILAR)  
SCALE: 1/4" = 1'-0"



**SECTION B-B**  
(APPROACH SLAB NO. 1 SIMILAR)  
SCALE: 1/2" = 1'-0"



**WIDE BAND PAVEMENT JOINT DETAIL**

SCALE: 1/2" = 1'-0"

\* PAVEMENT SHALL BE CONSTRUCTED IN TWO LIFTS:  
SECOND LIFT: 1 1/2" TYPE III,  
FIRST LIFT: 1 1/2" TYPE IV

\*\* 1" Ø PLASTIC TUBES SHALL BE PER SECTION 740.01 OF THE 2001 VAOT STANDARD SPECIFICATIONS. (COST INCLUDED IN ITEM 501.33)

**APPROACH SLAB DETAIL**

(ABUTMENT NO. 1 SHOWN, ABUTMENT NO. 2 SIMILAR)  
SCALE: 1/2" = 1'-0"

**STATE OF VERMONT  
AGENCY OF TRANSPORTATION**

Town Of	JOHNSON	Bridge No.	37
Highway No.	VT. ROUTE 15	Log Sta.	
		Surv. Sta.	
<b>VT. ROUTE 15 OVER GIHON RIVER</b>			
<b>APPROACH SLAB DETAILS</b>			
Designed By	R. RICARD	Drawn By	D. DUGAL
Checked By	Date	Bridge Design Supervisor	
S. BEAUMONT	11/06	J. BYATT	Date 11/06
PROJECT	JOHNSON	PROJECT NO.	BRF 030-2(17)S
I.G.C. Info.			
Bridge Sheet No.		Sheet	61 Of 85

9/12/06APP.DWG