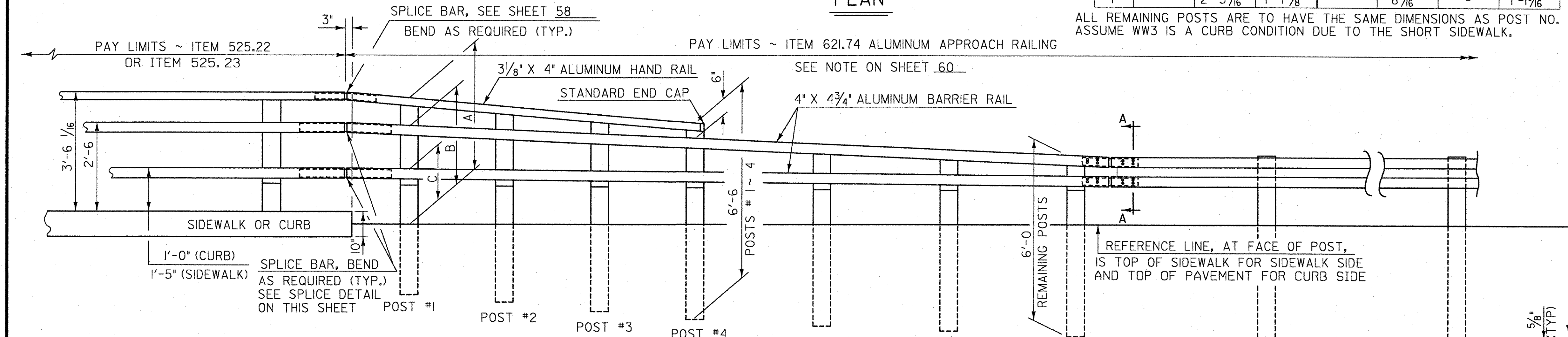


**ALUMINUM APPROACH RAIL
RAIL DIMENSIONS FOR A CURB CONDITION (WW3)**

POST NO.	RAIL HEIGHT DIMENSIONS			OFFSET BLOCK DIMENSIONS			
	A	B	C	D	E	F	G
1	4'-2"	3'-2 1/16"	2'-2 3/8"	1 1/2"	1'-0 3/16"	2'-4 3/16"	-
2	3'-10 3/16"	3'-1 5/16"	2'-1 3/8"	9 5/16"	11 5/16"	2'-2 1/16"	-
3	3'-7 5/8"	2'-11 1/16"	2'-0 3/8"	8 3/8"	11 5/16"	1'-11 1/8"	-
4	3'-4 1/2"	2'-10 1/16"	1'-11 3/8"	6 7/8"	10 1/16"	1'-9 1/16"	-
5	-	2'-7 7/8"	1'-10"	-	9 7/8"	-	1'-2 7/8"
6	-	2'-5 3/4"	1'-8 1/16"	-	9 1/16"	-	1'-2 1/16"
7	-	2'-3 3/16"	1'-7 3/8"	-	8 3/16"	-	1'-1 3/16"

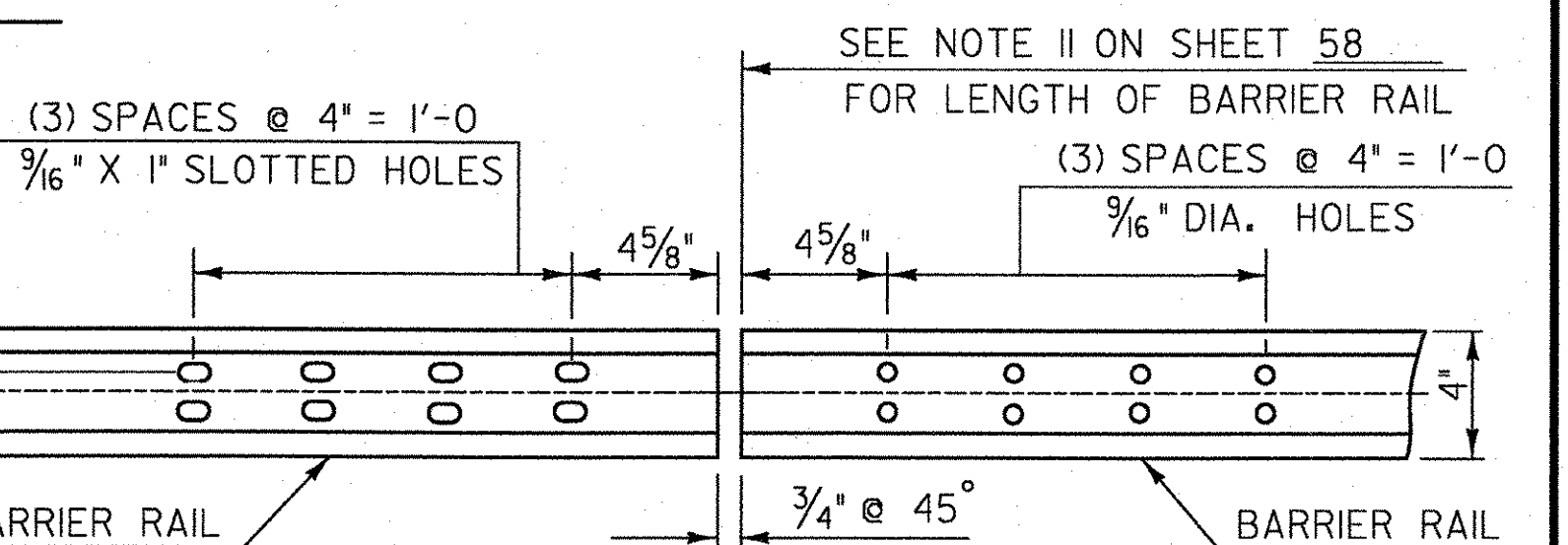
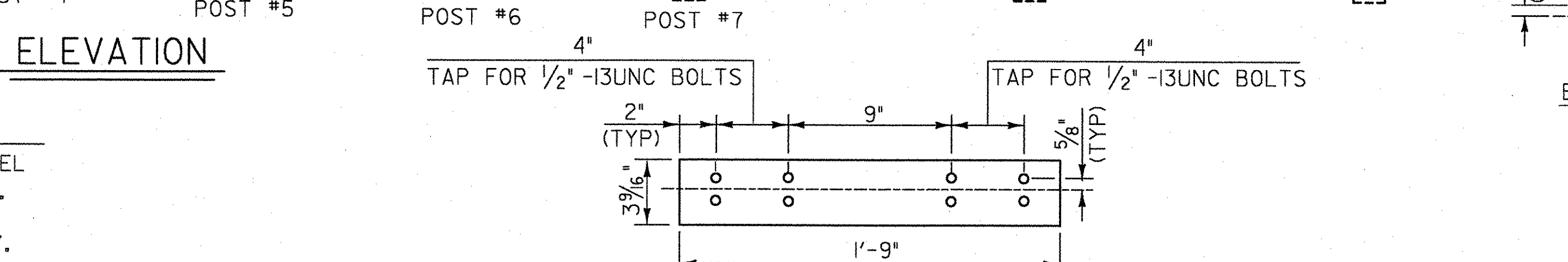
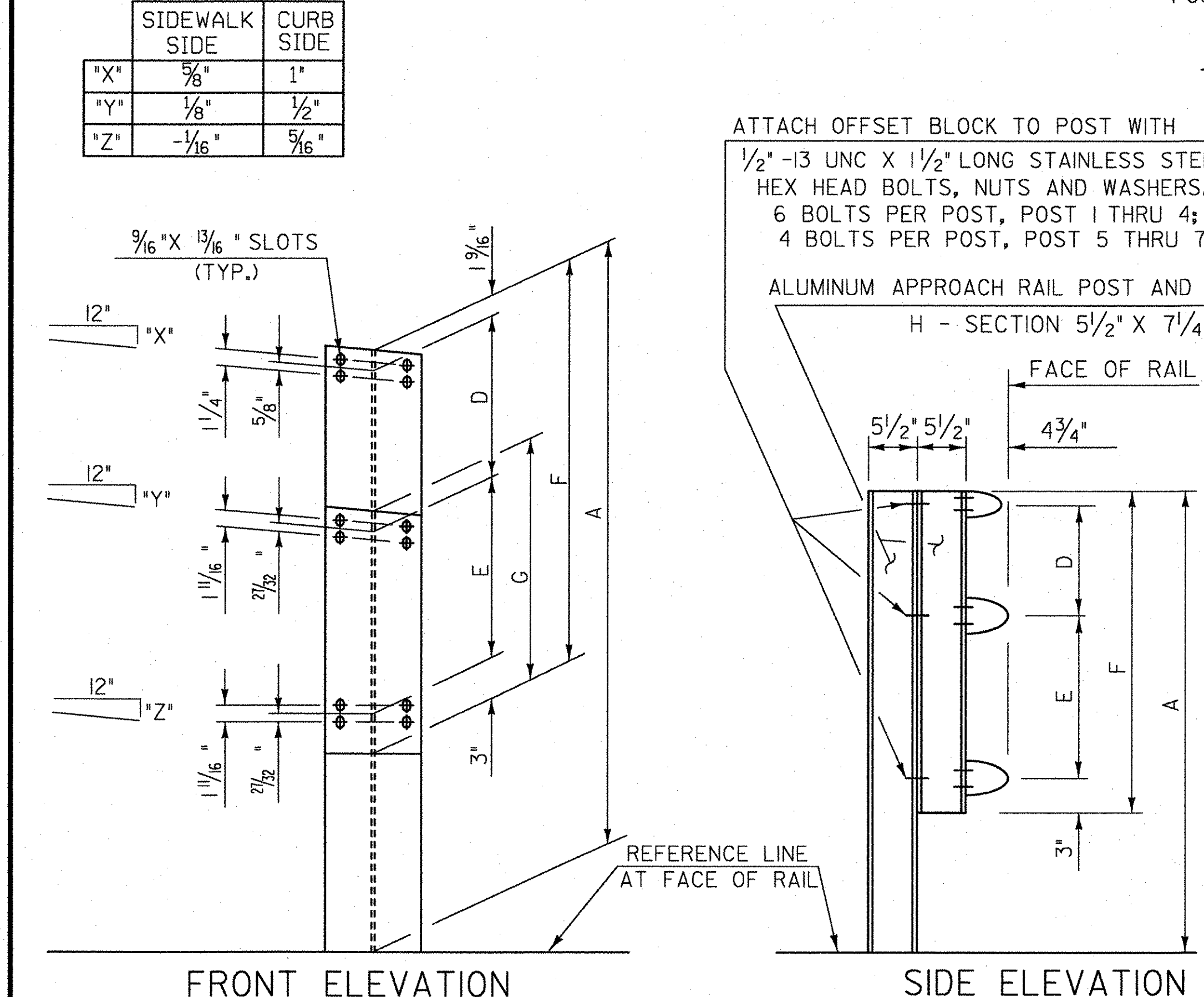
- NOTES**
- POST 1 THROUGH 7 SHALL BE EXTRUDED ALUMINUM.
 - ALL STRUCTURAL STEEL SHALL BE AASHTO M270 GRADE 36 GALVANIZED AFTER FABRICATION.
 - ALL ITEMS NOT OTHERWISE INDICATED SHALL MEET THE SPECIFICATION REQUIREMENTS OF THE STANDARD SHEETS ON WHICH THEY ARE DETAILED.
 - SEE STANDARD G-1 FOR STEEL BEAM GUARD RAIL DETAILS. SEE SHEETS 57 AND 58 FOR ALUMINUM BRIDGE RAILING DETAILS.
 - THE COST OF ALL MATERIALS AND LABOR FOR THE SPLICE BETWEEN THE ALUMINUM APPROACH RAILING AND THE STEEL BEAM GUARD RAIL SHALL BE SUBSIDIARY TO ITEM 621.74, ALUMINUM APPROACH RAILING.
 - DETAILS ARE SHOWN FOR TRANSITION TO A 3 RAIL ALUMINUM BRIDGE RAILING.
 - DIMENSIONS SHOWN ARE FROM A REFERENCE LINE AT THE FACE OF POST FOR A NORMAL CROWNED SECTION. APPROPRIATE CORRECTIONS SHALL BE MADE FOR CROSS SLOPES OTHER THAN A NORMAL SECTION.



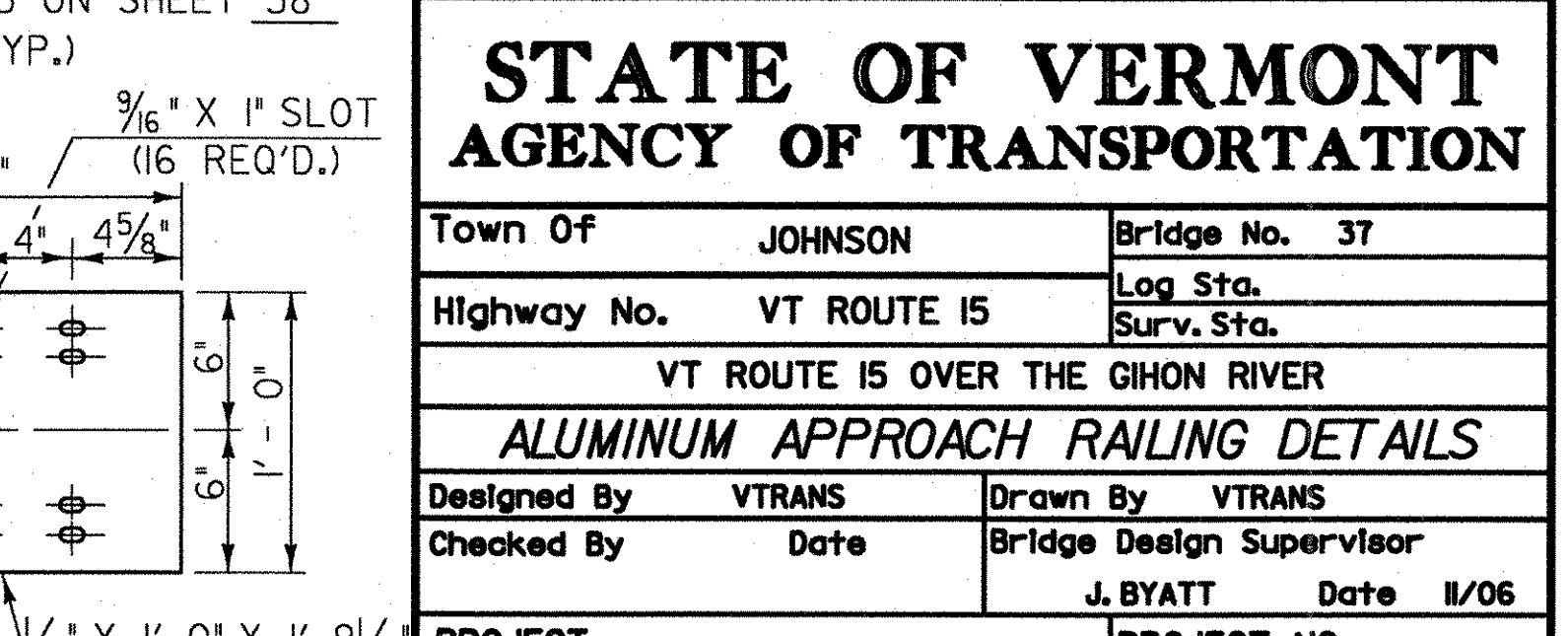
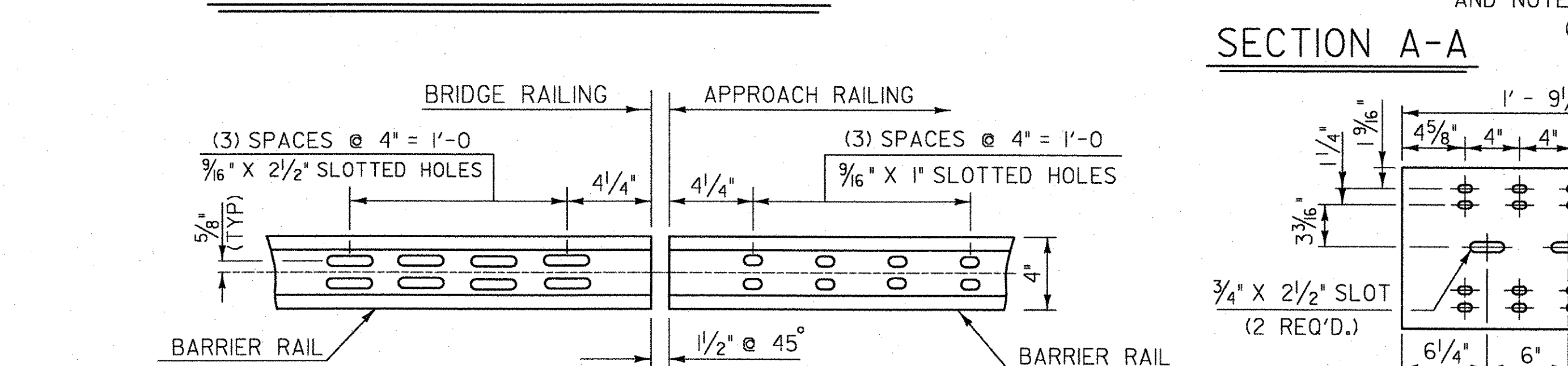
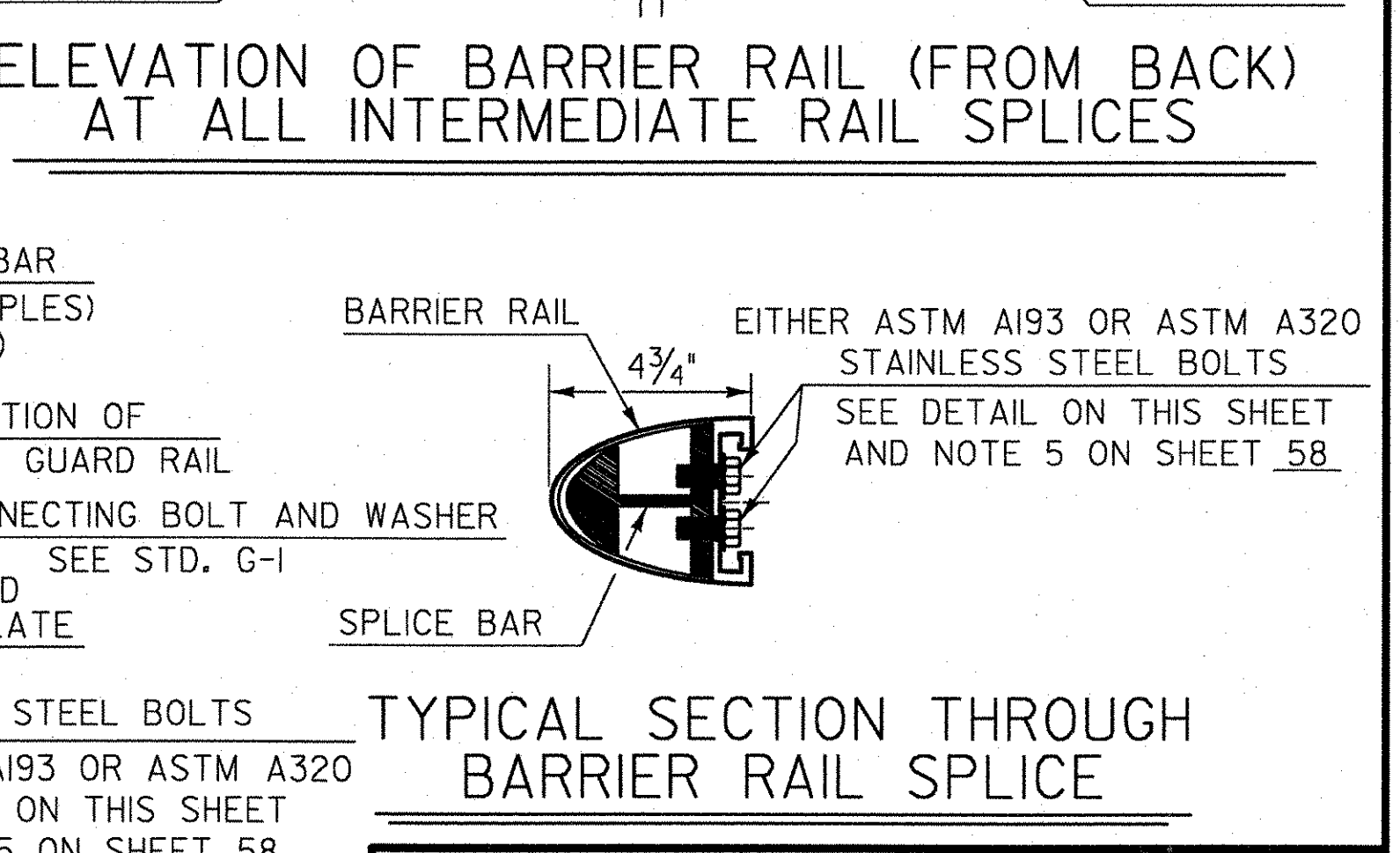
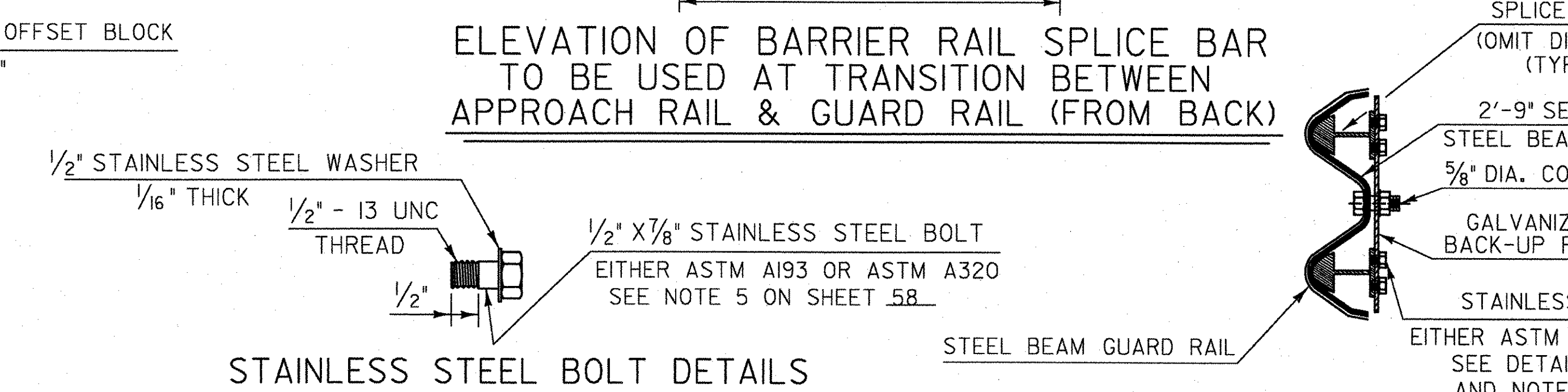
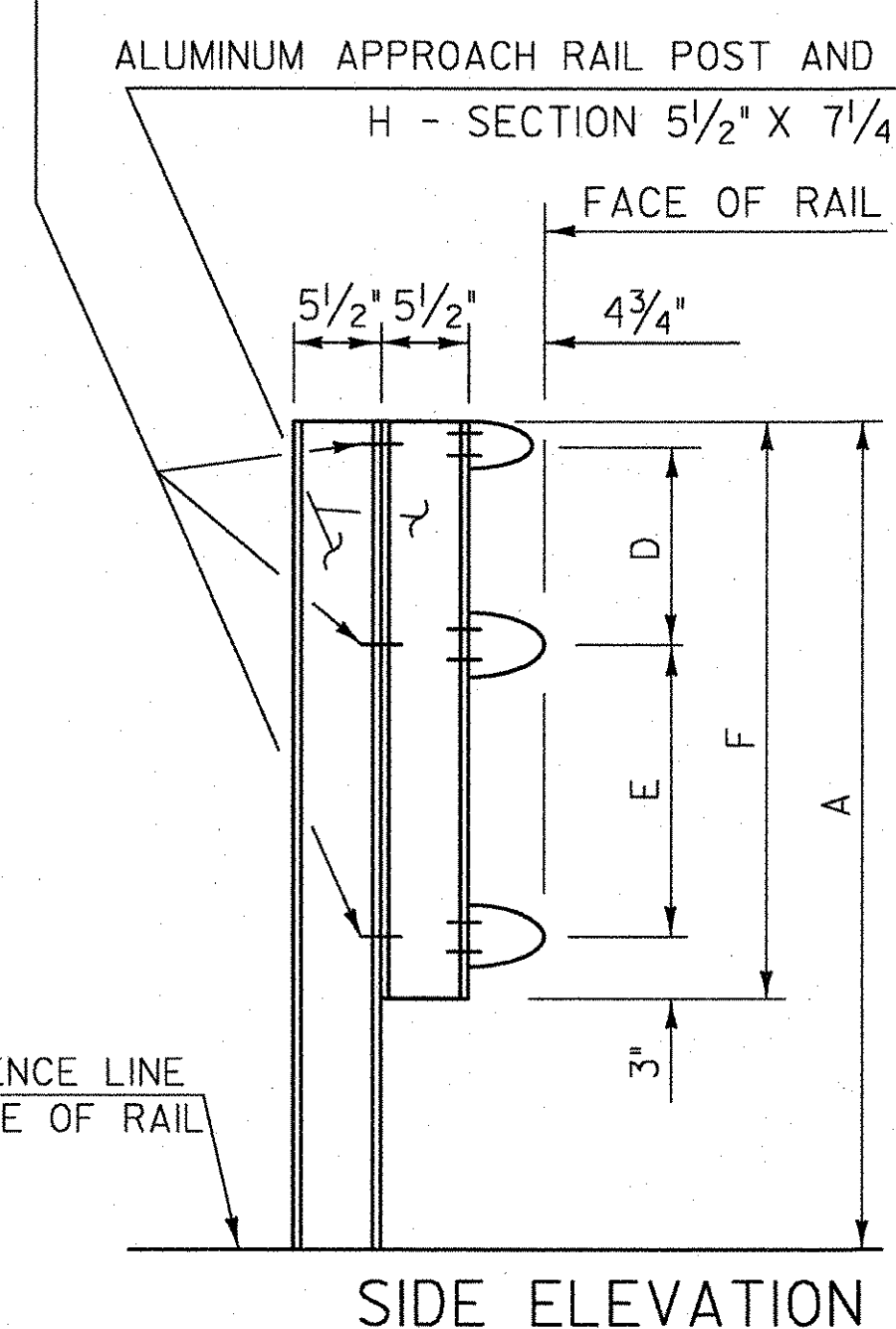
**ALUMINUM APPROACH RAIL
RAIL DIMENSIONS FOR A SIDEWALK CONDITION (WW4)**

POST NO.	RAIL HEIGHT DIMENSIONS			OFFSET BLOCK DIMENSIONS			
	A	B	C	D	E	F	G
1	3'-4 13/16"	2'-5 3/4"	1'-5 3/16"	1 1/2"	1'-0 9/16"	2'-4 3/16"	-
2	3'-2 7/8"	2'-5 3/8"	1'-5 1/16"	9 5/16"	11 5/16"	2'-2 1/16"	-
3	3'-1"	2'-5"	1'-5 1/16"	8 7/8"	11 5/16"	1'-11 7/8"	-
4	2'-11 1/16"	2'-4 5/8"	1'-5 5/16"	6 7/8"	10 3/4"	1'-9 3/4"	-
5	-	2'-4 1/8"	1'-6 1/4"	-	9 7/8"	-	1'-2 7/8"
6	-	2'-3 5/8"	1'-6 9/16"	-	9 1/16"	-	1'-2 1/16"
7	-	2'-3 3/8"	1'-6 5/16"	-	8 1/4"	-	1'-1 1/4"

ALL REMAINING POSTS ARE TO HAVE THE SAME DIMENSIONS AS POST NO. 7. THE WW1 AND WW2 APPROACH RAILS ARE TO BE THREE-BAR ALUMINUM RAIL THROUGHOUT THESE LOCATIONS.



ATTACH OFFSET BLOCK TO POST WITH 1/2 -13 UNC X 1 1/2" LONG STAINLESS STEEL HEX HEAD BOLTS, NUTS AND WASHERS. 6 BOLTS PER POST, POST 1 THRU 4; 4 BOLTS PER POST, POST 5 THRU 7.



**STATE OF VERMONT
AGENCY OF TRANSPORTATION**

Town Of	JOHNSON	Bridge No.	37
Highway No.	VT ROUTE 15	Log Sta.	
		Surv. Sta.	
VT ROUTE 15 OVER THE GIHON RIVER			
ALUMINUM APPROACH RAILING DETAILS			
Designed By	VTRANS	Drawn By	VTRANS
Checked By	Date	Bridge Design Supervisor	J. BYATT
PROJECT	JOHNSON	PROJECT NO.	BRF 030-2(17)S
L&C. Info.		Sheet	59 of 85