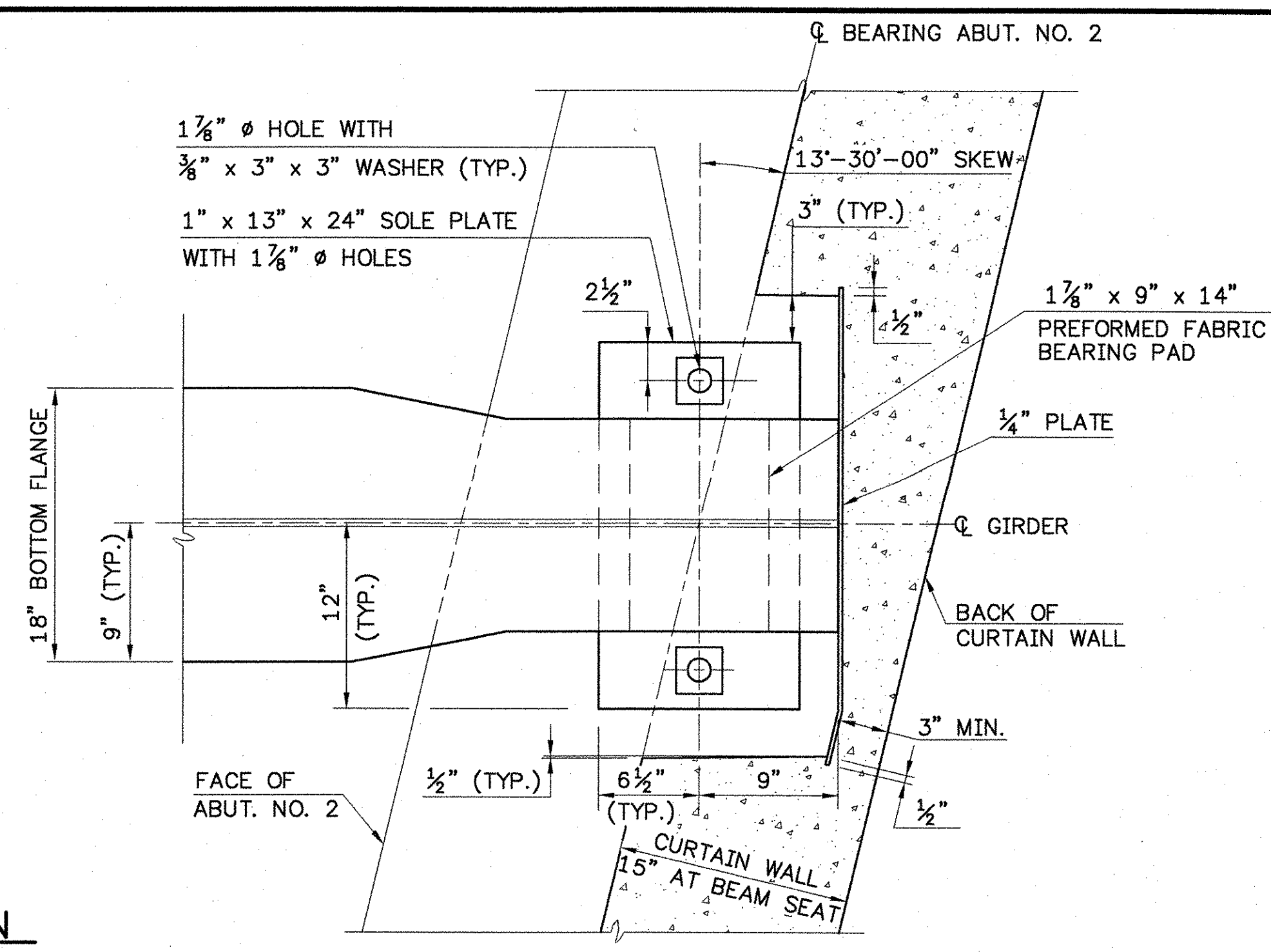
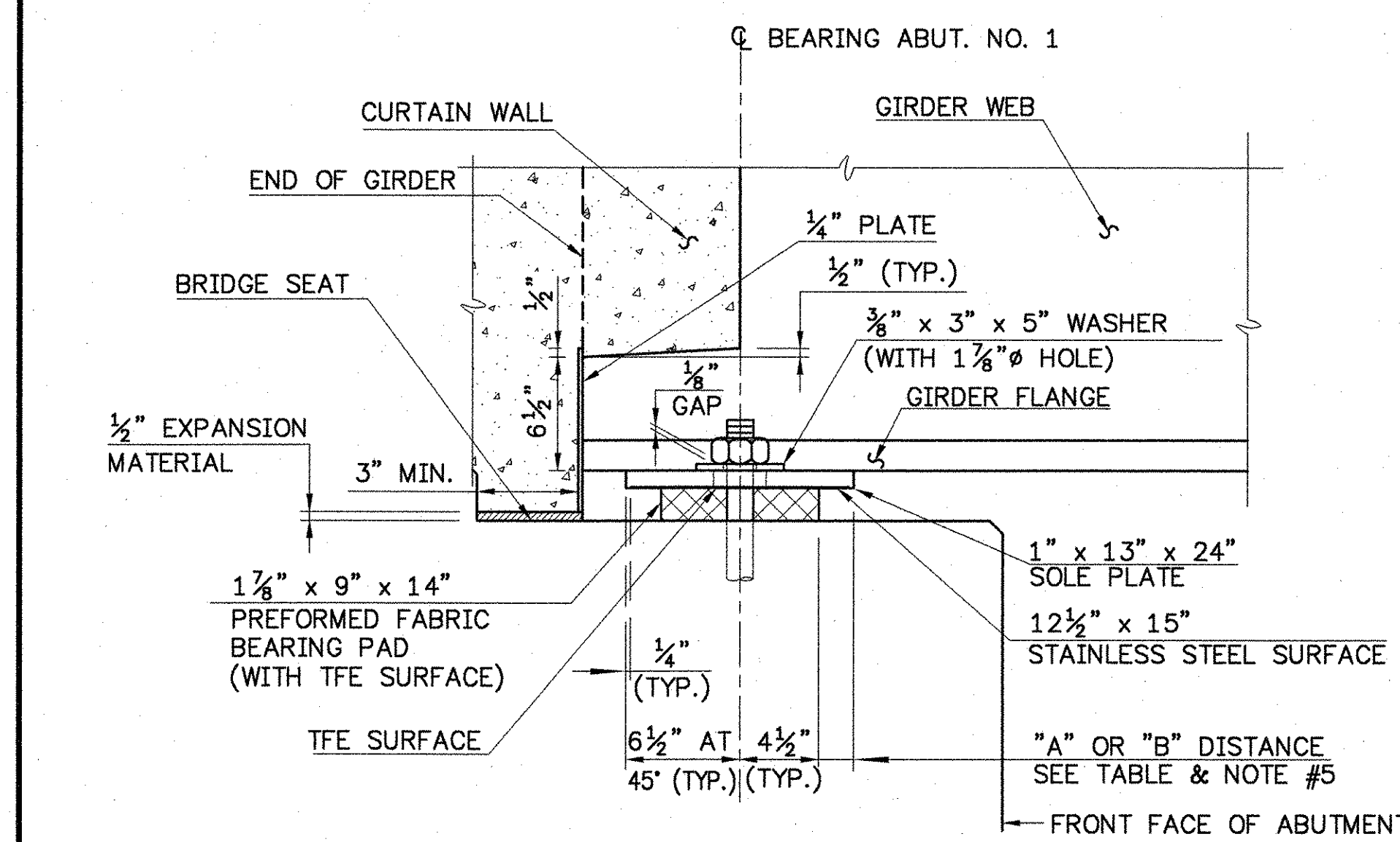


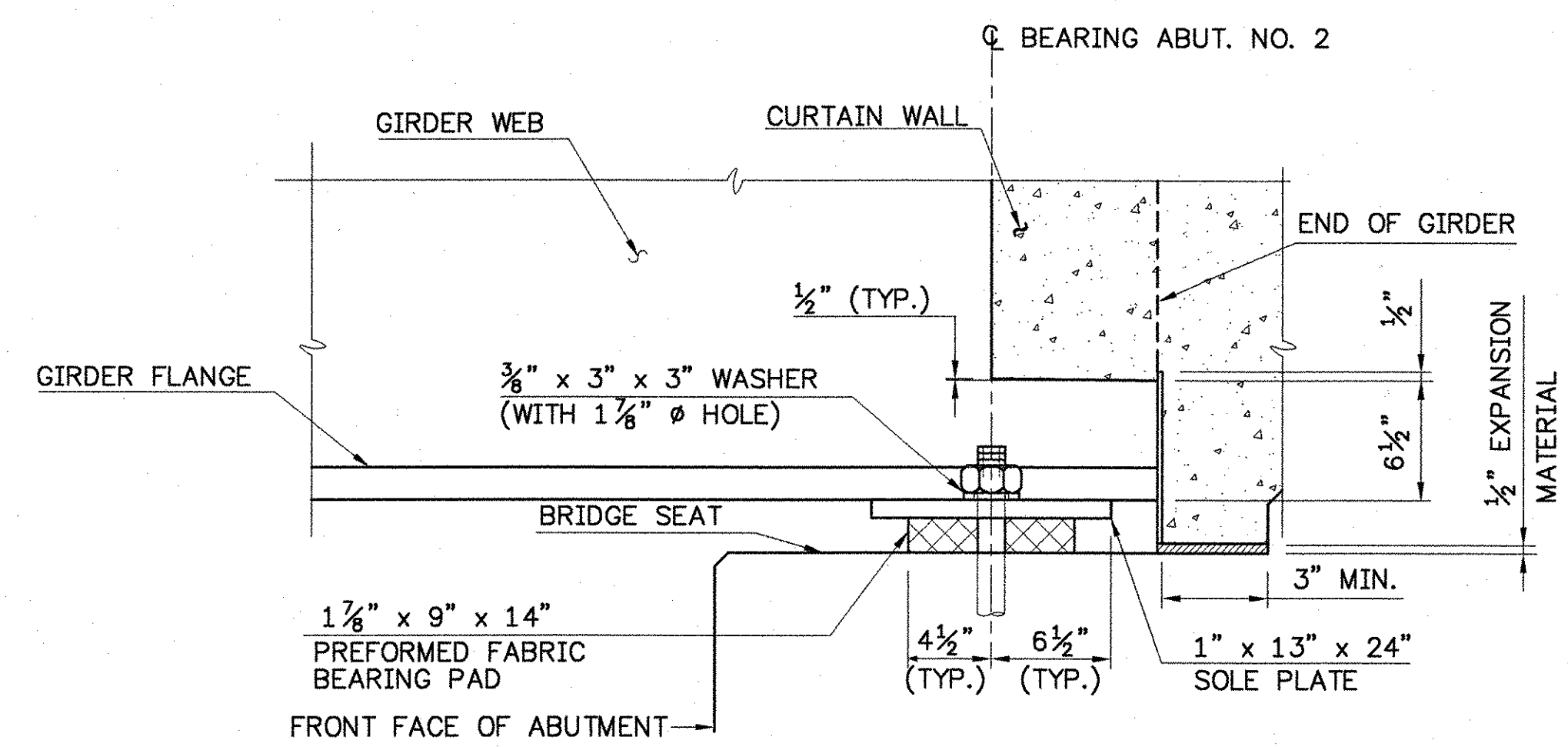
PLAN
SCALE: 1 1/2"=1'-0"



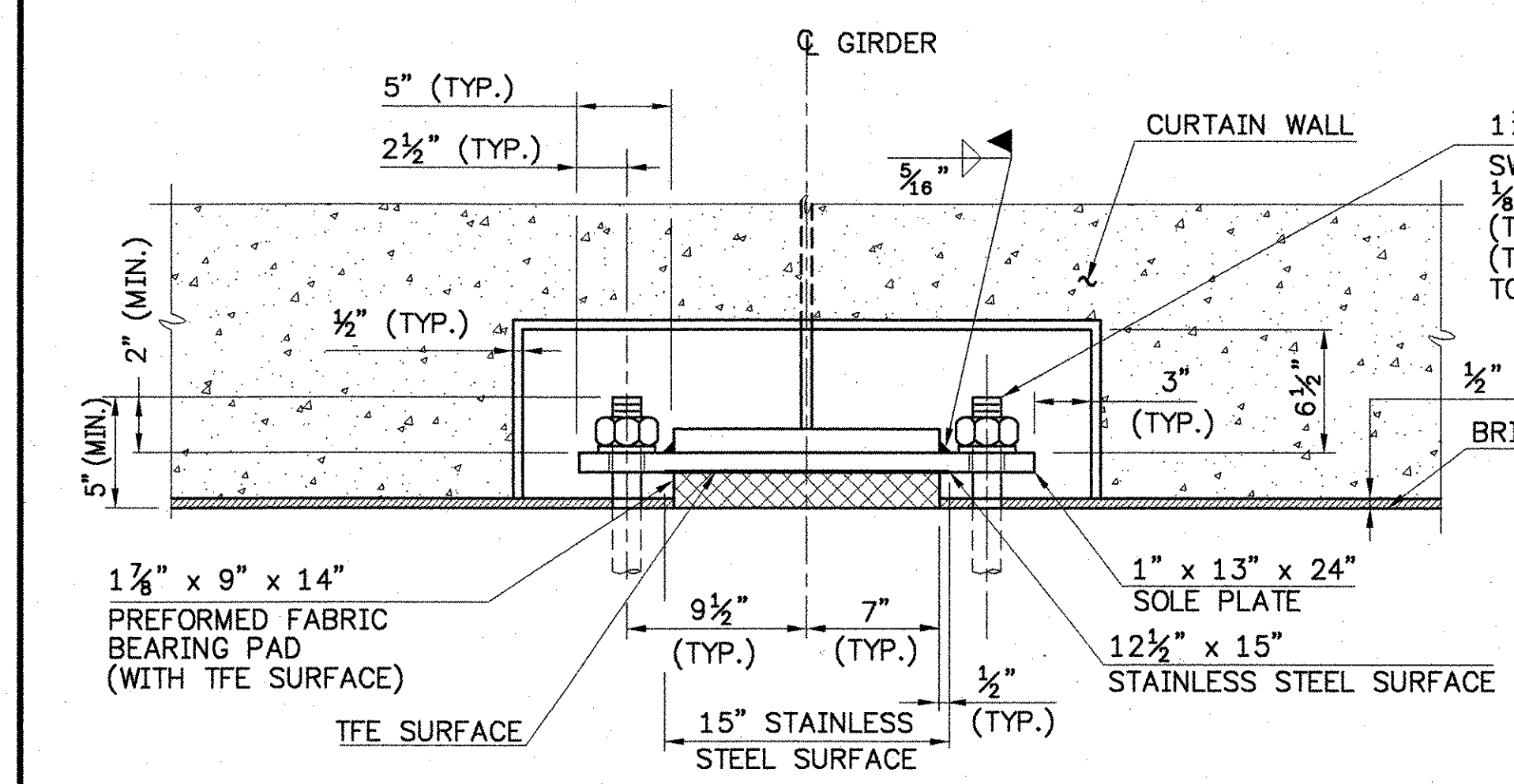
PLAN
SCALE: 1 1/2"=1'-0"



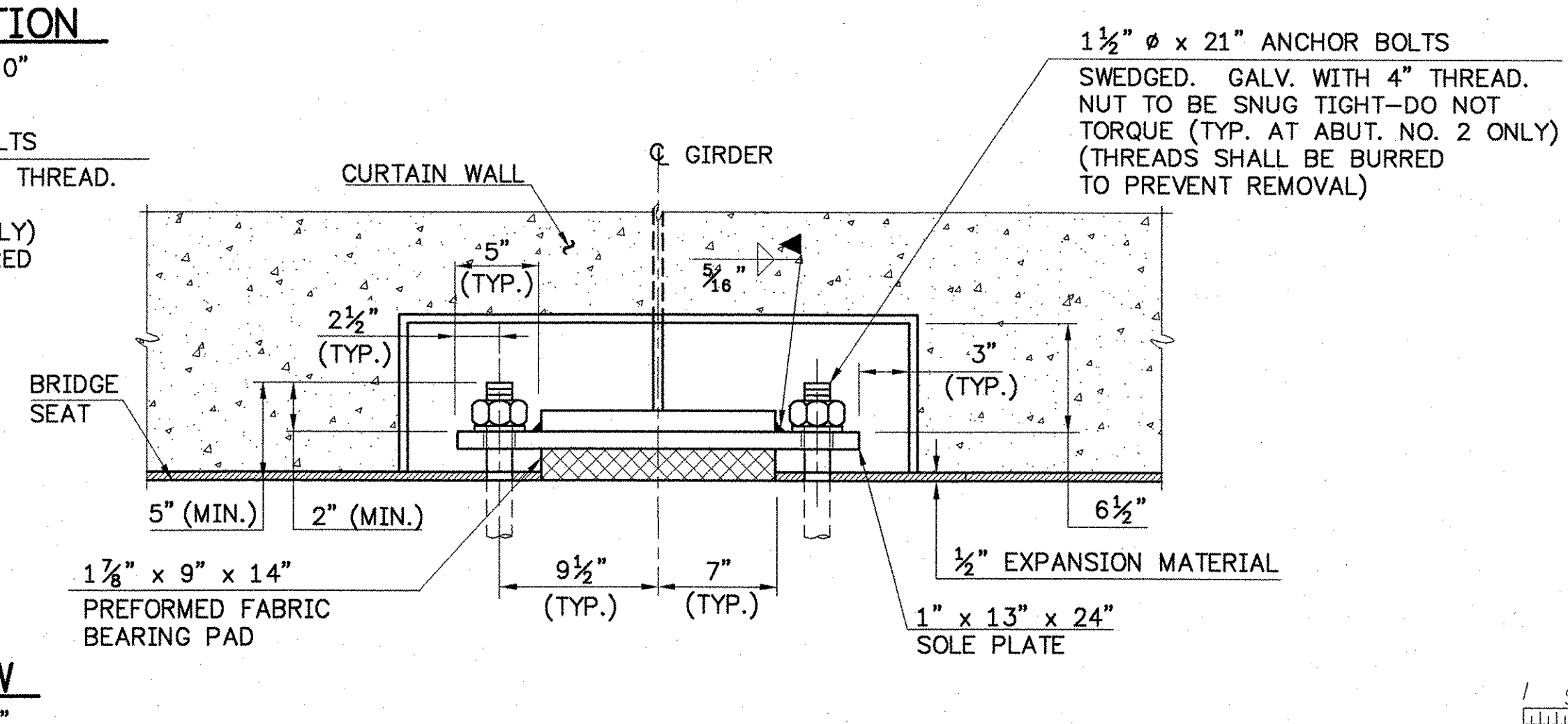
SIDE ELEVATION
SCALE: 1 1/2"=1'-0"



SIDE ELEVATION
SCALE: 1 1/2"=1'-0"



FRONT VIEW
SCALE: 1 1/2"=1'-0"



FRONT VIEW
SCALE: 1 1/2"=1'-0"

BEARING NOTES:

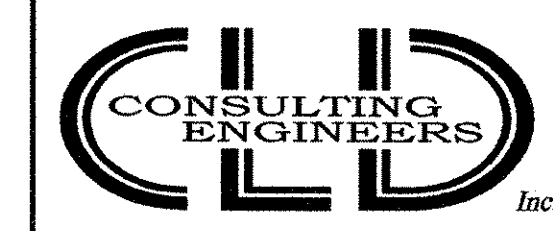
- BEARINGS SHALL CONFORM TO APPLICABLE SUBSECTIONS OF SECTION 531 AND 731 OF THE VAOT STANDARD SPECIFICATIONS. BEARINGS SHALL BE PREFORMED FABRIC BEARING PADS WITH STEEL SOLE PLATES.
- BEARINGS SHALL BE PAID FOR UNDER THE ITEM 531.10 "BEARING DEVICE ASSEMBLY".
- SHOP DRAWINGS CONFORMING TO SUBSECTION 531.03 OF THE 2001 VAOT STANDARD SPECIFICATIONS SHALL BE SUBMITTED TO INCLUDE WELDING AND BONDING PROCEDURES.
- THE CONCRETE SURFACE UNDER THE BEARING DEVICE SHALL BE LEVEL.
- "A" DISTANCE IS THE FINAL SETTING FOR THE BEARING AFTER THE CONCRETE SLAB, CURB, PAVEMENT AND BRIDGE RAIL ARE PLACED. "B" DISTANCE IS LISTED FOR SETTING THE BEARING AFTER THE STRUCTURAL STEEL IS ERECTED AND BEFORE THE CONCRETE DECK IS POURED. THE DIFFERENCE IS THE THEORETICAL ELONGATION OF THE BOTTOM FLANGE DUE TO THE DEAD LOAD DEFLECTION. THE FINAL "A" DISTANCE, AS SHOWN IN THE TABLE, MUST BE ATTAINED WITHIN 1/8".
- DESIGN CRITERIA:
 - AVERAGE BEARING PRESSURE = 1000 PSI MAXIMUM
 - ROTATION LIMIT = 0.02 RADIAN
 - HORIZONTAL CAPACITY SHALL BE A MINIMUM OF 10% OF THE VERTICAL DESIGN LOAD (WITH IMPACT).
 - DESIGN LOAD PER BEARING = 112 KIPS (DEAD LOAD PLUS LIVE LOAD WITH IMPACT).
- ALL STEEL IN BEARING DEVICES (EXCEPT STAINLESS) SHALL BE AASHTO M270 GRADE 36.
- ANCHOR BOLTS SHALL HAVE A MINIMUM OF 15" EMBEDMENT INTO THE CONCRETE AND SHALL CONFORM TO ASTM F1554-99 GRADE 55 (AASHTO M314).
- ALL BEARING DEVICES SHALL BE GALVANIZED OR METALIZED AS PER SUBSECTIONS 531.04(b) AND 506.15(a) & (b) OF THE 2001 VAOT STANDARD SPECIFICATIONS. AREAS OF GALVANIZING OR METALIZING DAMAGED BY FIELD WELDING OR HANDLING SHALL BE REPAIRED PER SUPPLEMENTAL SPECIFICATION 513.
- ALL THE ANCHOR BOLTS, NUTS AND WASHERS SHALL BE GALVANIZED AND SHALL BE ASTM F1554-99 GRADE 55 (AASHTO M314). ALL WASHERS SHALL BE 3/8" PLATE (MINIMUM). PAYMENT FOR ANCHOR BOLTS, NUTS AND WASHERS SHALL BE INCLUDED IN THE UNIT BID PRICE FOR ITEM 531.10 "BEARING DEVICE ASSEMBLY".

BEARING SETTING DIMENSIONS

TEMP	"A" DIST.	"B" DIST.
0°F	2 1/4"	2 5/8"
15°F	2 3/8"	2 1/2"
30°F	2 1/2"	2 1/4"
45°F	2"	2 1/8"
60°F	1 15/16"	2 1/4"
75°F	1 11/16"	2 1/8"
90°F	1 3/4"	2 1/8"
105°F	1 5/8"	2"

**STATE OF VERMONT
AGENCY OF TRANSPORTATION**

Town Of	JOHNSON	Bridge No.	37
Highway No.	VT. ROUTE 15	Log Sta.	
		Surv. Sta.	
VT. ROUTE 15 OVER GIHON RIVER			
BEARING DETAILS			
Designed By	R.RICARD	Drawn By	D.DUGAL
Checked By	Date	Bridge Design Supervisor	
		J. BYATT	Date 11/06
PROJECT	JOHNSON	PROJECT NO.	BRF 030-2(17)S
I.G.C. Info.			
Bridge Sheet No.		Sheet	56 Of 85



540 Commercial Street - Manchester, NH 03101
(603) 668-8223 • Fax: (603) 668-8802
eld@eldengineers.com • www.eldengineers.com
Maine • New Hampshire • Vermont

91296BEARING.DWG