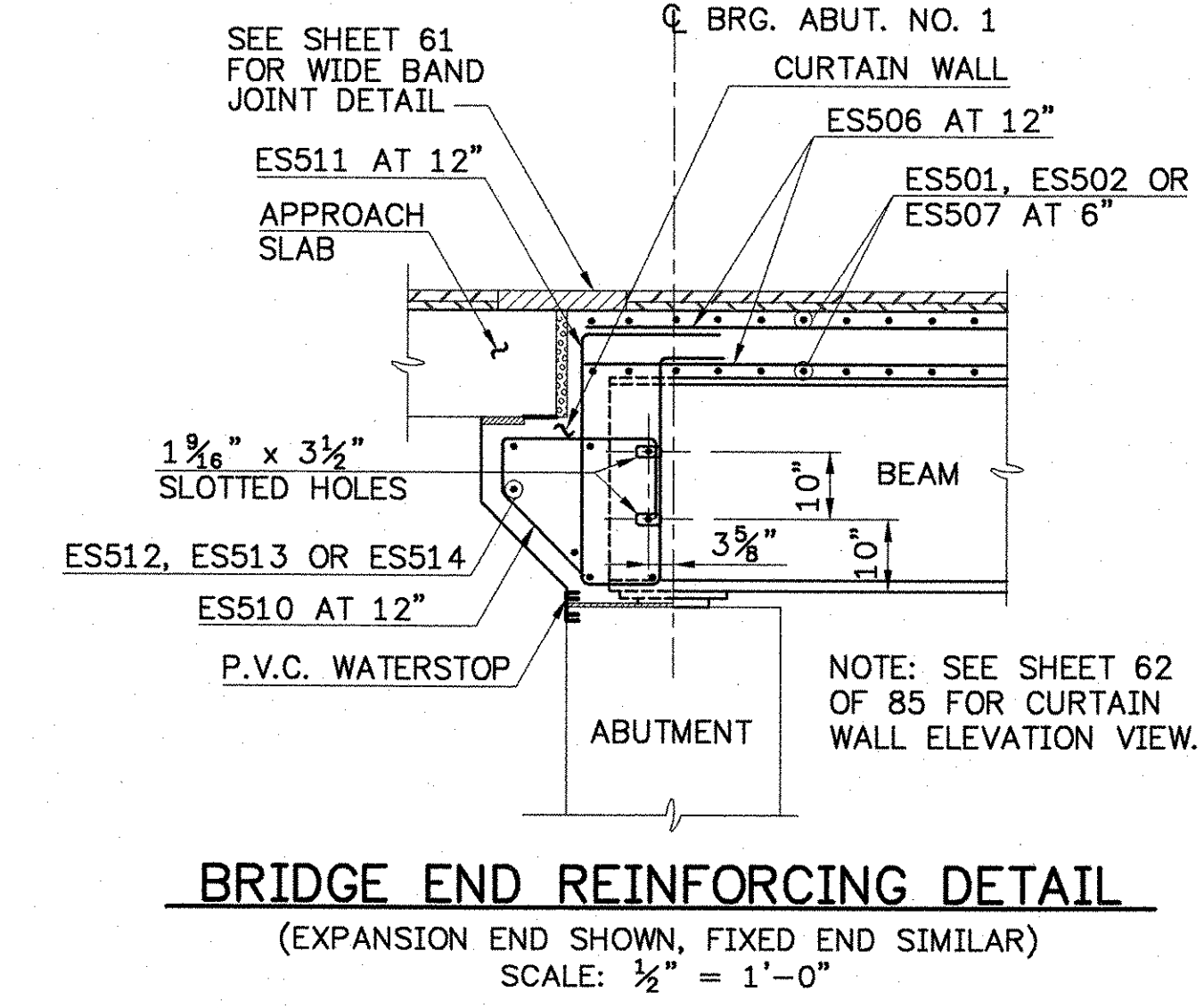
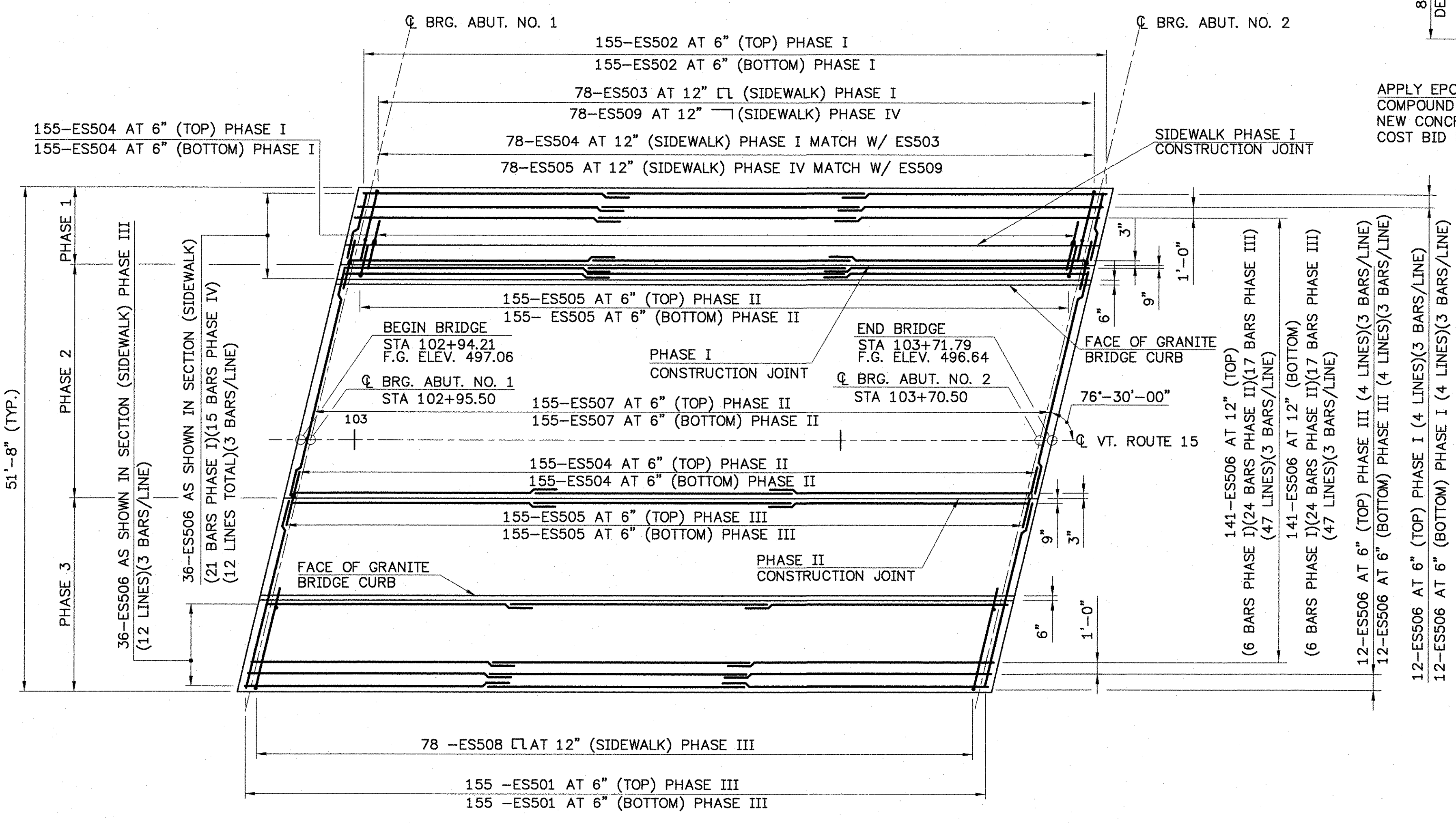
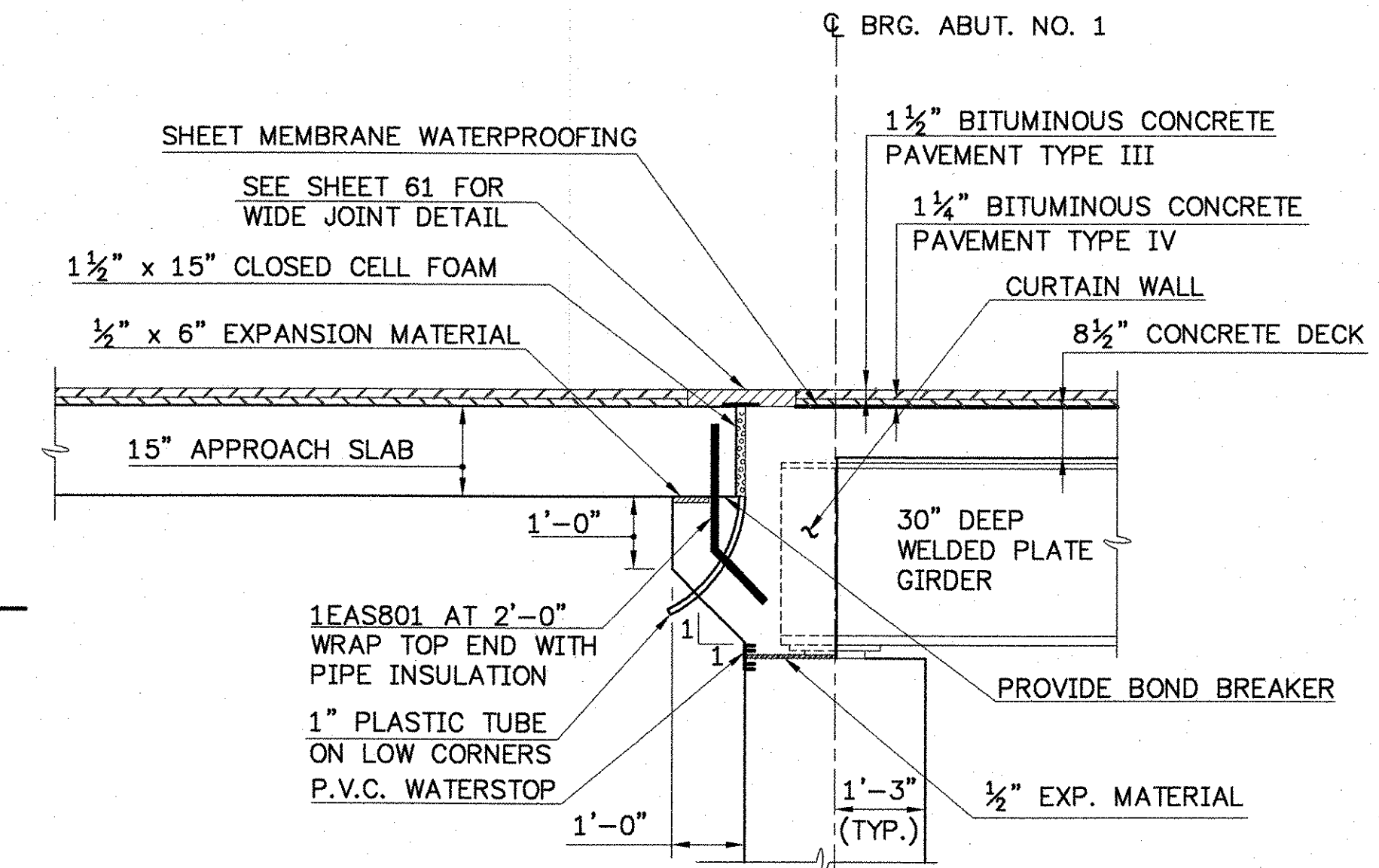
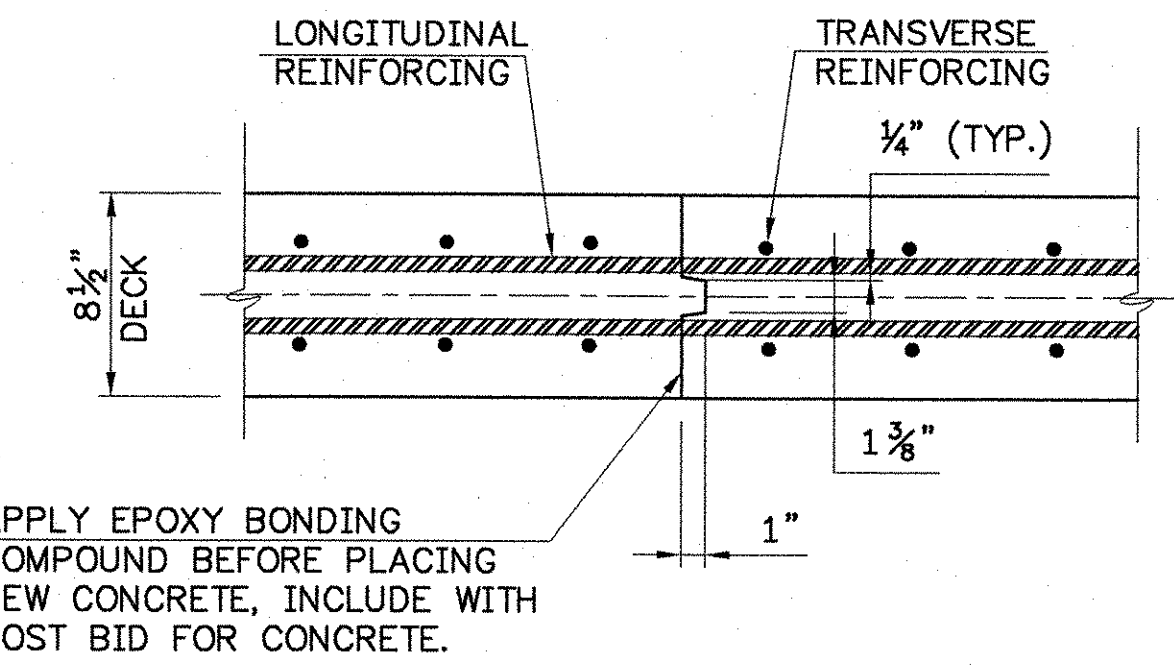
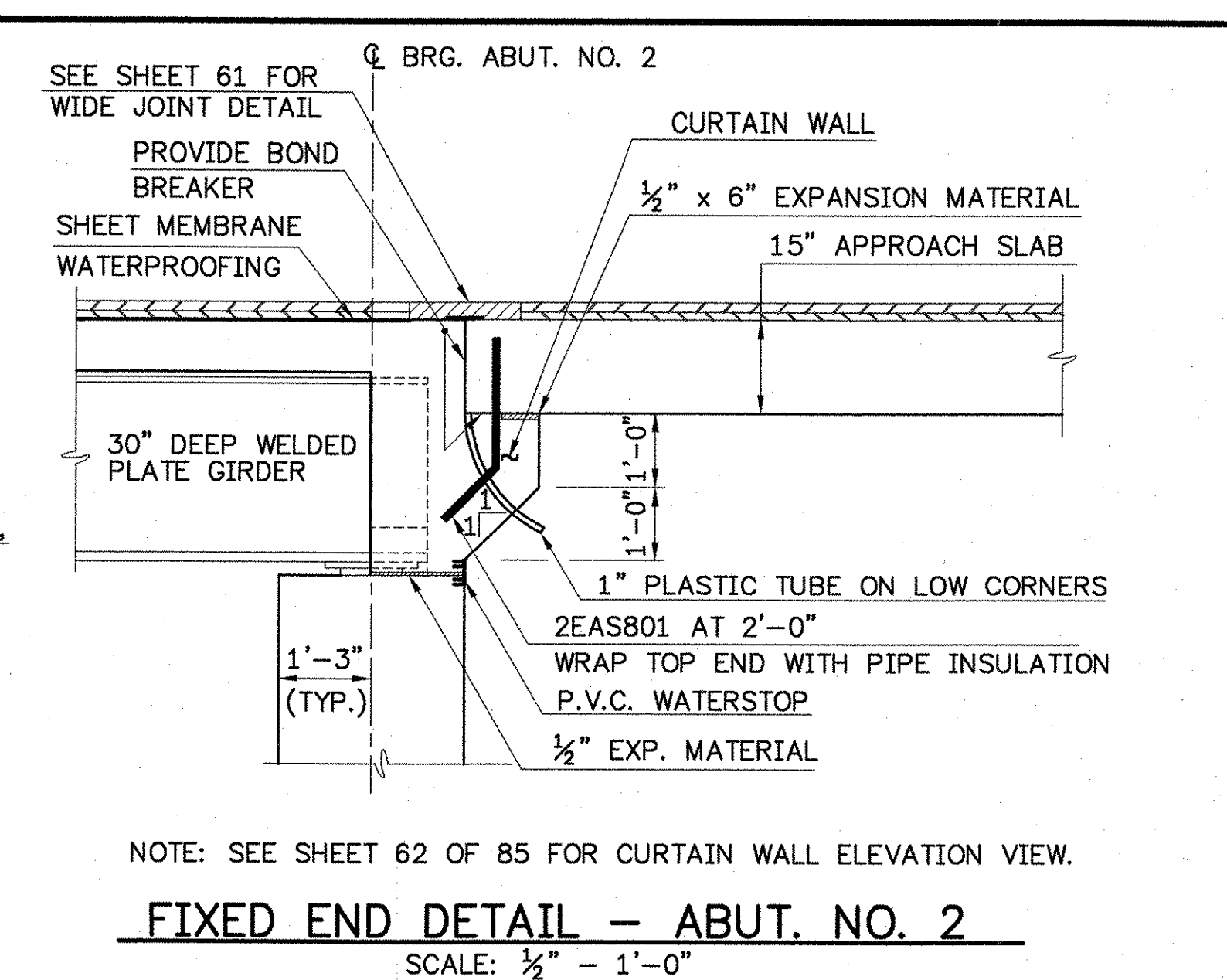


* PAVEMENT SHALL BE CONSTRUCTED IN TWO LIFTS:
SECOND LIFT: 1 1/2" TYPE III,
FIRST LIFT: 1 1/4" TYPE IV



STATE OF VERMONT AGENCY OF TRANSPORTATION		
Town Of	JOHNSON	Bridge No. 37
Highway No.	VT. ROUTE 15	Log Sta.
		Surv. Sta.
VT. ROUTE 15 OVER GIHON RIVER		
DECK DETAILS		
Designed By	R.RICARD	Drawn By. D.DUGAL
Checked By	Date	Bridge Design Supervisor
S. BEAUMONT	11/06	J. BYATT Date 11/06
PROJECT	JOHNSON	PROJECT NO. BRF 030-2(17)S
I.G.C. Info.		
Bridge Sheet No.		Sheet 51 Of 85

CONSULTING ENGINEERS

540 Commercial Street • Manchester, NH 03101
(603) 668-8223 • Fax: (603) 668-8802
cl@clengineers.com • www.clengineers.com
Maine • New Hampshire • Vermont