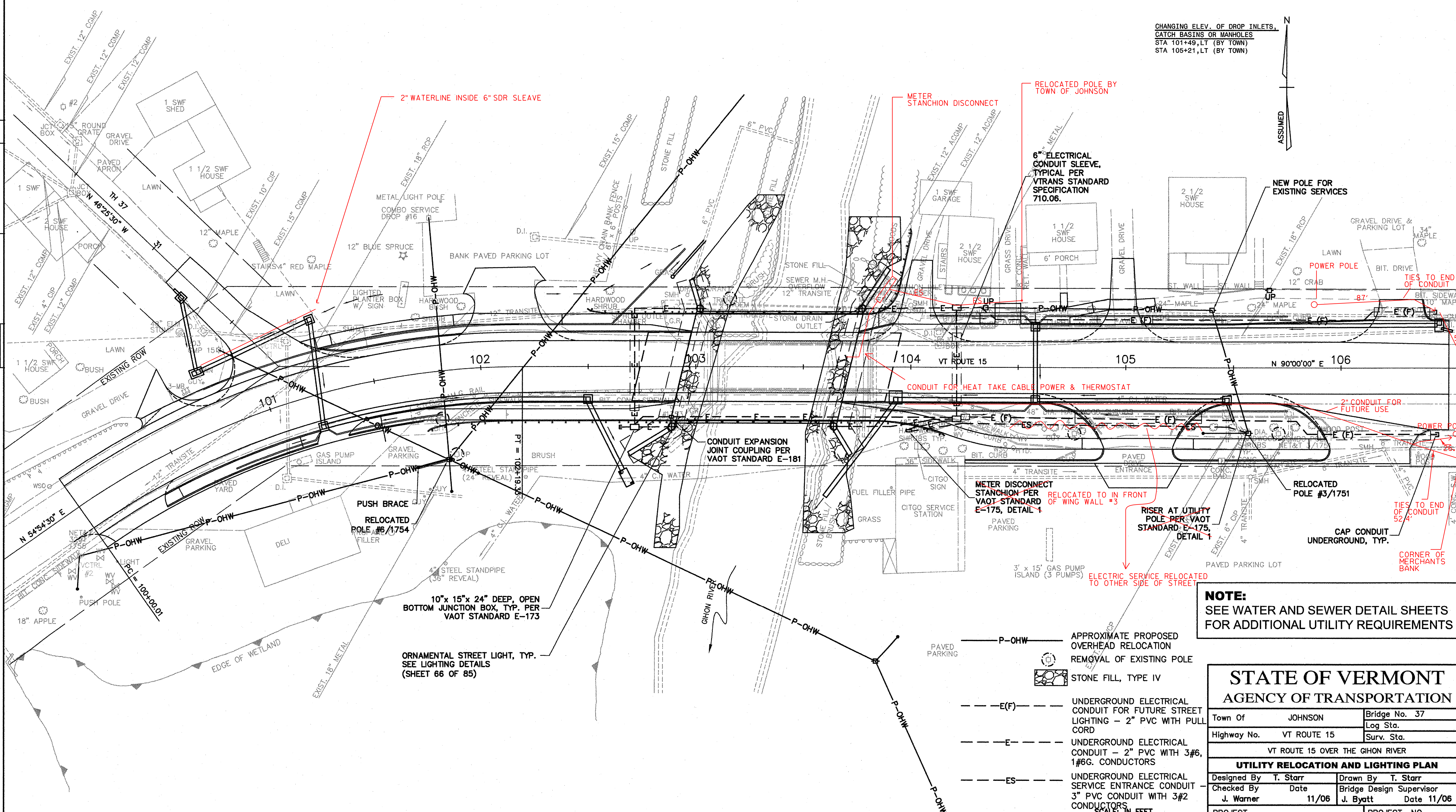
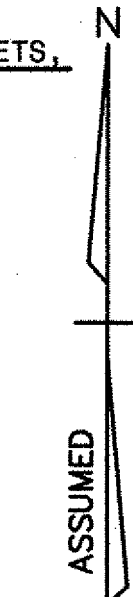


NOTE:
EXISTING UTILITY LOCATIONS (WATER, SEWER, ELECTRIC, AND DRAINAGE) SHOWN ON THESE PLANS HAVE BEEN COMPILED FROM FIELD SURVEY AND CONSTRUCTION/AS-BUILT PLANS. ALL LOCATIONS SHOULD BE CONSIDERED APPROXIMATE.

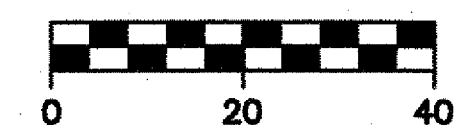
CHANGING ELEV. OF DROP INLETS, CATCH BASINS OR MANHOLES
STA 101+49, LT (BY TOWN)
STA 105+21, LT (BY TOWN)



NOTE:
SEE SHEET 66 OF 85 FOR LIGHTING DETAILS AND NOTES.

NOTE:
SEE WATER AND SEWER DETAIL SHEETS FOR ADDITIONAL UTILITY REQUIREMENTS

- APPROXIMATE PROPOSED OVERHEAD RELOCATION
- UNDERGROUND ELECTRICAL CONDUIT FOR FUTURE STREET LIGHTING - 2" PVC WITH PULL CORD
- UNDERGROUND ELECTRICAL CONDUIT - 2" PVC WITH 3#6, 1#6G. CONDUCTORS
- UNDERGROUND ELECTRICAL SERVICE ENTRANCE CONDUIT 3" PVC CONDUIT WITH 3#2 CONDUCTORS
- STONE FILL, TYPE IV



STATE OF VERMONT		
AGENCY OF TRANSPORTATION		
Town Of	JOHNSON	Bridge No. 37
Highway No.	VT ROUTE 15	Log Sta.
		Surv. Sta.
VT ROUTE 15 OVER THE GHON RIVER		
UTILITY RELOCATION AND LIGHTING PLAN		
Designed By	T. Starr	Drawn By T. Starr
Checked By	Date	Bridge Design Supervisor
J. Warner	11/06	J. Byatt Date 11/06
PROJECT	JOHNSON	PROJECT NO. BRF 030-2(17)S
I.G.C. Info.		
Bridge Sheet No.		Sheet 24 Of 85