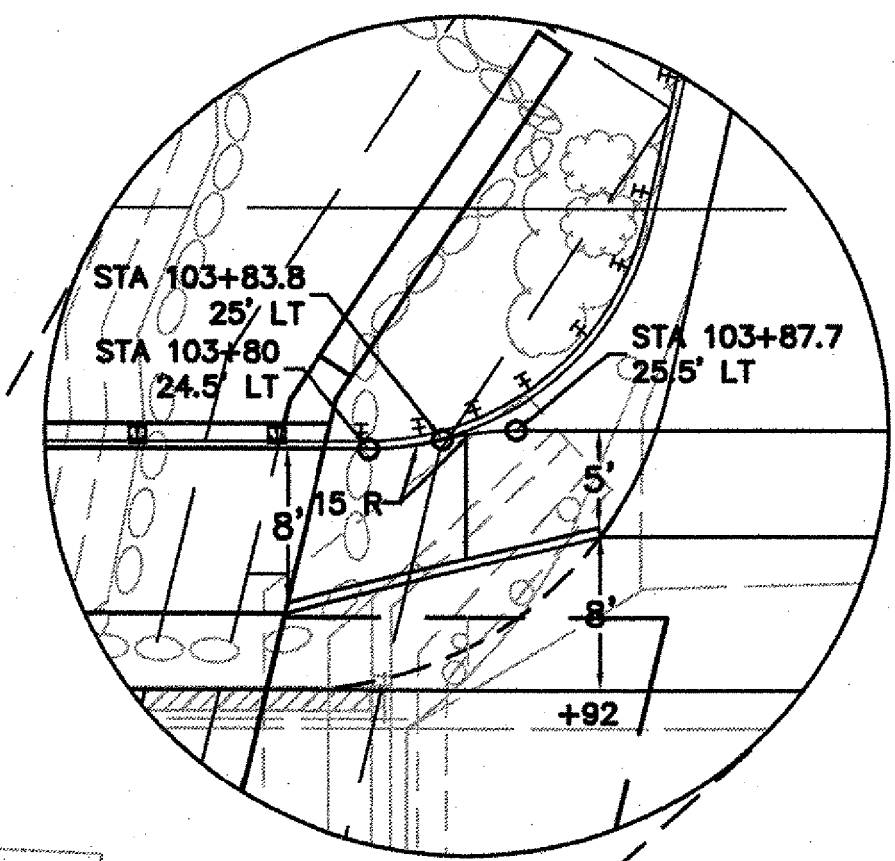


AREAS REPAIRED DUE TO DAMAGED PAVEMENT DURING INSTALLATION AND REMOVAL OF FILTRATION TANKS FOR CONTAMINATED SOIL REMEDIATION.

N
ASSUMED



END APPROACH
STA 106+65

STATE OF VERMONT AGENCY OF TRANSPORTATION		
Town Of	JOHNSON	Bridge No. 37
Highway No.	VT ROUTE 15	Log Sta.
		Surv. Sta.
VT ROUTE 15 OVER THE GIHON RIVER		
PAVEMENT LAYOUT PLAN		
Designed By	T. Starr	Drawn By T. Starr
Checked By	Date	Bridge Design Supervisor
J. Warner	11/06	J. Byatt Date 11/06
PROJECT	JOHNSON	PROJECT NO. BRF 030-2(17)S
I.G.C. Info.		
Bridge Sheet No.		Sheet 18 Of 85

