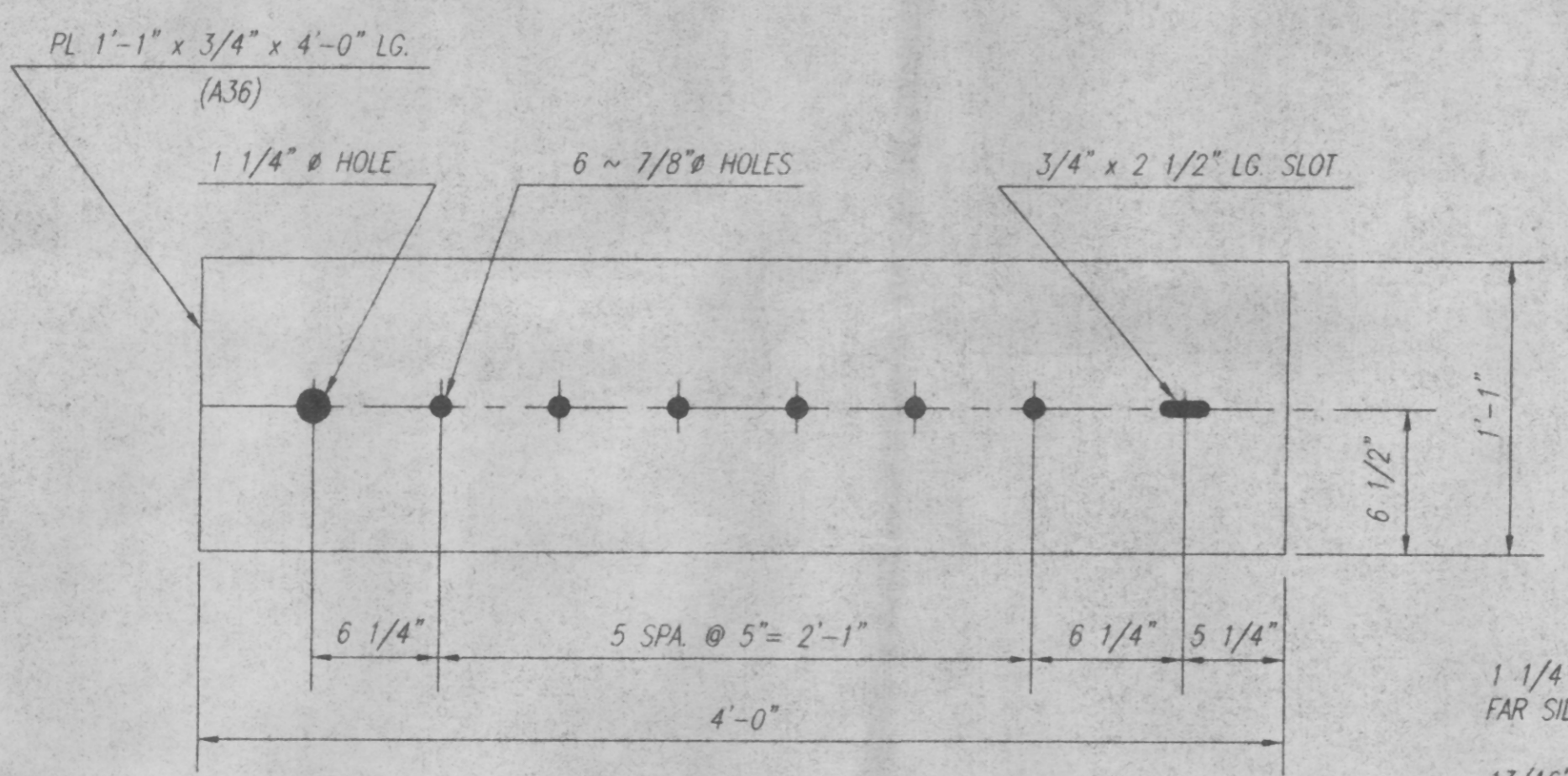
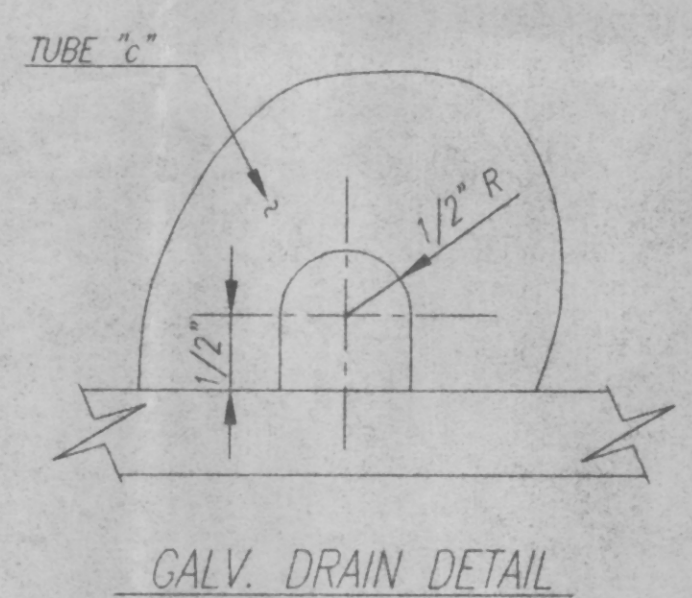
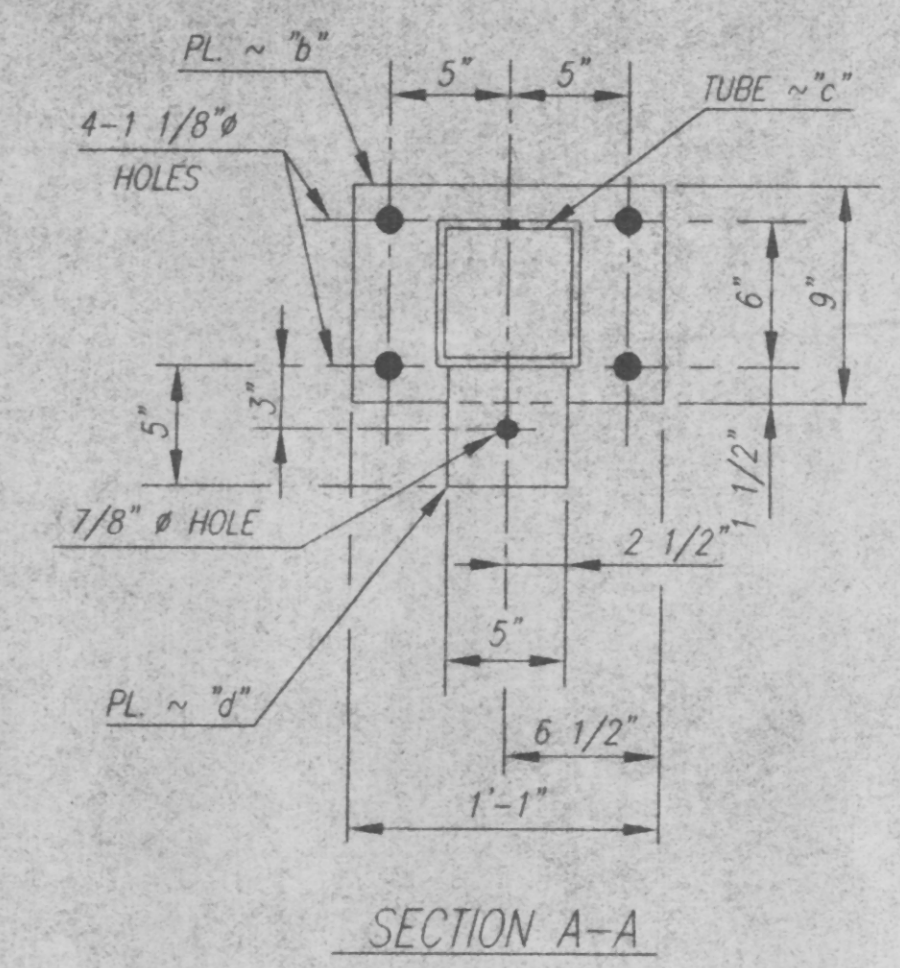
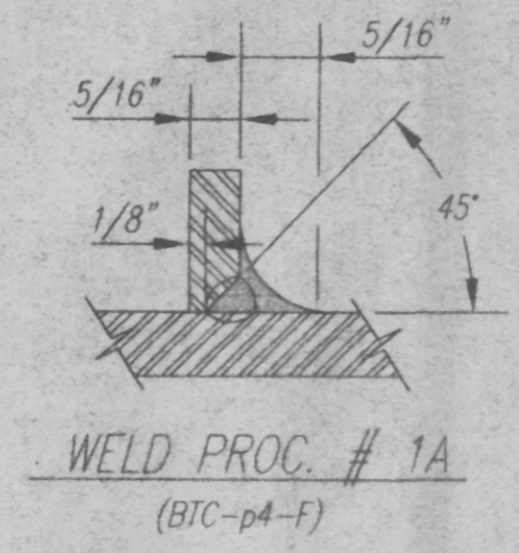
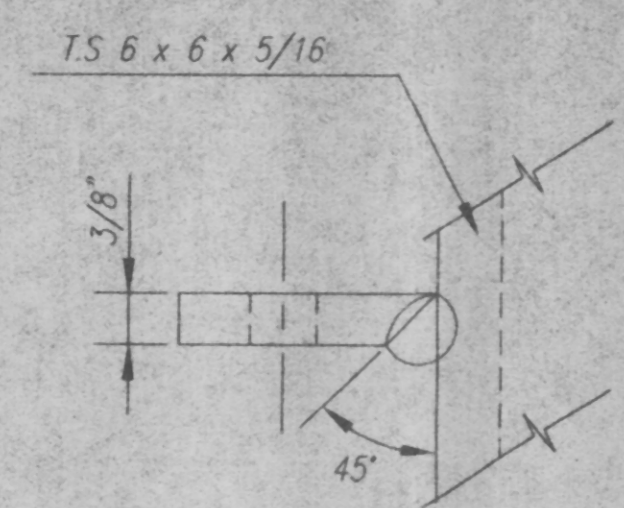
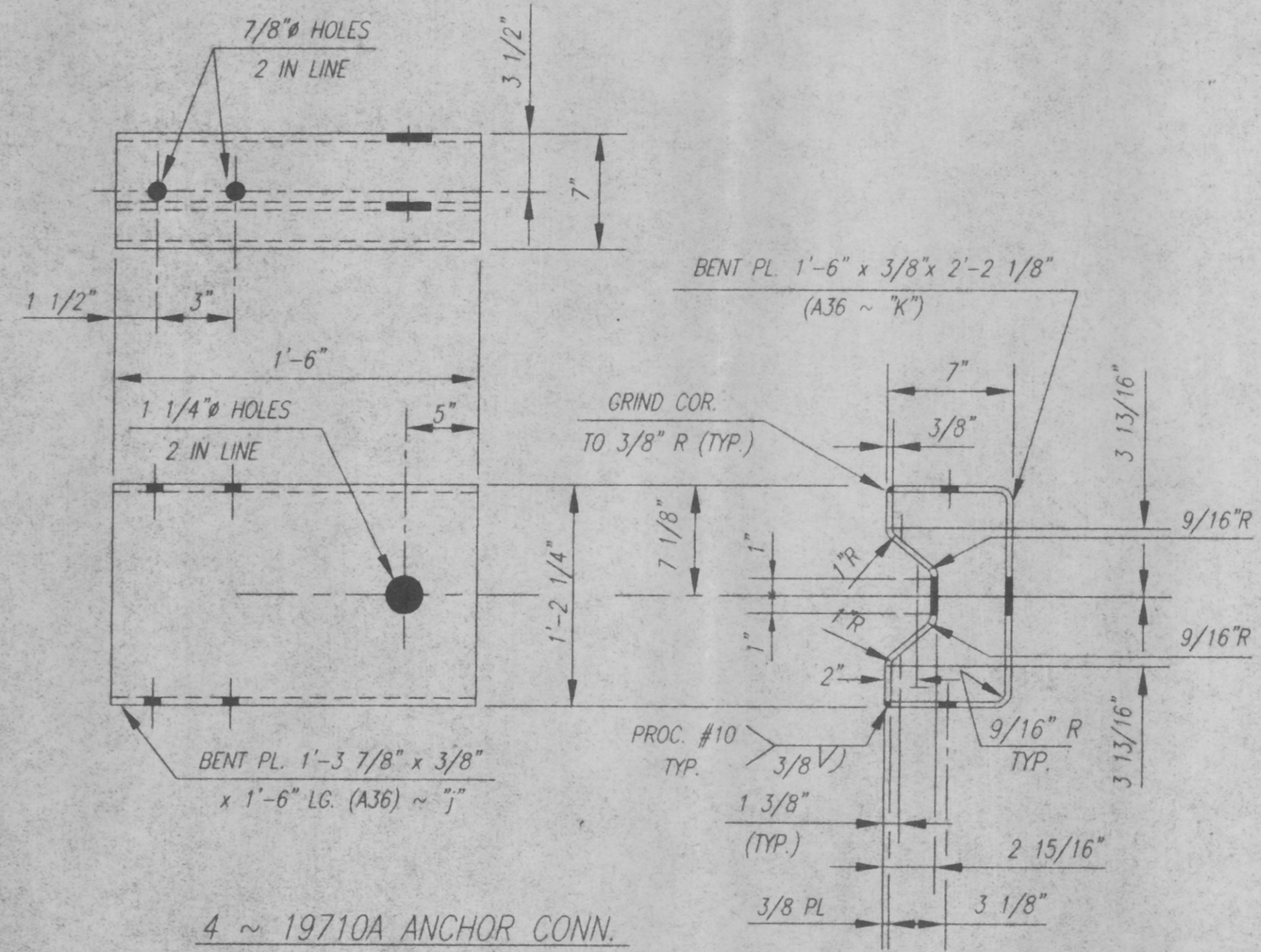
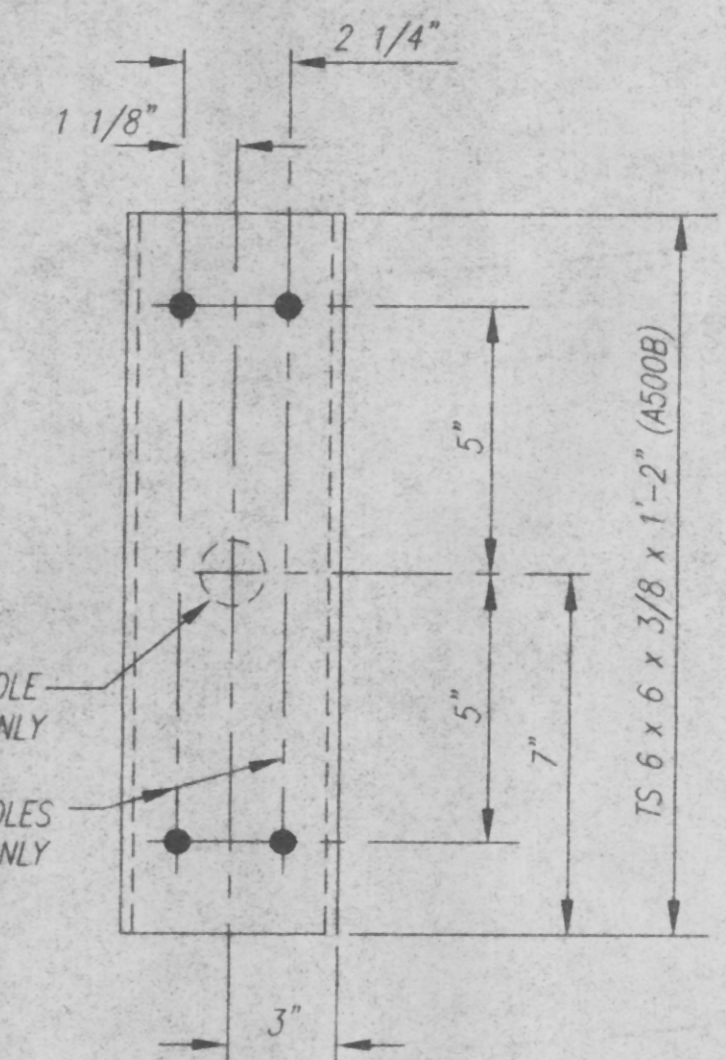


EACH POST 14392A CONSISTING OF:

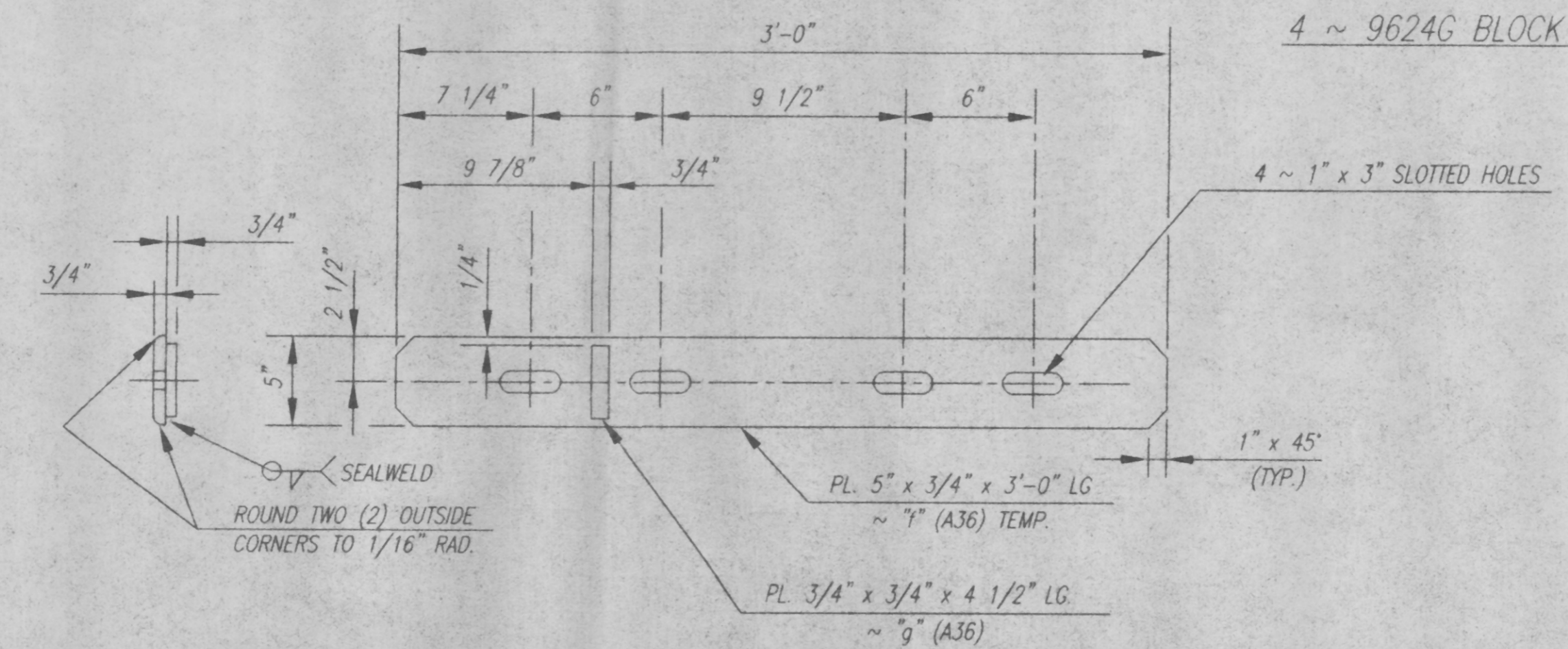
SUB MK	QUAN.	DESCRIPTION
b	1	PL 9" x 1" x 1'-1" LG. (A36)
c	1	T.S. 6" x 6" x 5/16" x 2'-1 1/16" LG. (A500B)
d	2	PL 5" x 3/8" x 5" LG. (A36)
e	1	PL 5 5/8" x 5/16" x 5 5/8" LG. (A36)



4 ~ 811G ANCHOR PLATE



4 ~ 19710A ANCHOR CONN.



44 ~ 32124A SPLICE

This drawing and the information shown thereon is the sole property of TRINITY INDUSTRIES, INC. Neither the drawing nor such information is to be used for any purpose other than that for which it was specifically furnished by TRINITY INDUSTRIES, INC. nor is any reproduction authorized without written permission.

BILL OF MATERIAL

PRODUCT CODE	QTY	DESCRIPTION	WT	REMARKS
14392A	30	2 RAIL POST	90#	
32124A	44	SPLICE	37#	
19710A	4	ANCHOR CONN.	8.3#	
811G	4	ANCHOR PLATE	1.33#	
9624G	4	BLOCK	3.4#	
HARDWARE				
3706G	88	3/4 x 6" x 4" HEX HD. BOLT	A307 GR.A A153	
3700G	176	3/4 x 6" FLAT WASHER	F844 A123	
3704G	88	3/4 x 6" HEX NUT (HWY)	A307 GR.A A153	
4433G	60	5/8 x 4 1/2" HEX HD. BOLT	A307 GR.A A153	
4373G	120	5/8 x 4 1/2" FLAT WASHER	F844 A123	
3350G	30	5/8 x 4 1/2" HEX NUT	A563 GR.A A153	
3917G	4	1" x 6" HEX HD. BOLT	A325 A153	
4902G	4	1" x 6" FLAT WASHER	F436 A123	
4903G	4	1" x 6" HEX NUT	A194 Gr.2H A153	
4421G	4	5/8 x 3" HEX HD. BOLT	A325 A153	
3404G	24	5/8 x 2" HEX HD. BOLT	A325 A153	
4372G	32	5/8 x 2" FLAT WASHER	F436 A123	
3310G	24	5/8 x 2" LOCK WASHER	F436 A123	
3351G	28	5/8 x 2" HEX NUT	A194 Gr.2H A153	
4779G	16	3/4 x 4 1/2" HEX HD. BOLT	A325 A123	
4699G	16	3/4 x 4 1/2" LOCK WASHER	F436 A123	
3711G	16	3/4 x 4 1/2" HEX NUT	A194 Gr.2H A153	
PAY QUANTITIES				
295'-0" LIN FT.	ITEM NO. 525.31	2-RAIL GALV. BOX BEAM BRIDGE RAILING		
4 EACH	ITEM NO. 621.70 (Partial)	SPEC. BEAM TO BOX BEAM CONN.		

HARDWARE NOTE:

VERMONT DEPT. OF HIGHWAYS HIGH STRENGTH HARDWARE A325 OR A449 REQUIRES MANUFACTURER'S CERTIFICATE SHOWING HEAT NO, PHYSICAL PROPERTIES AND CHEMICAL ANALYSIS.

CARBON A307 HARDWARE REQUIRES THE MANUFACTURER'S CERTIFICATE OF COMPLIANCE.

NOTES:

- ALL POSTS TO BE CHAMPY V NOTCH TESTED
- INSPECTED BY CONWELL
- FINISH: GALV A123
- ALL POST MATERIAL, INCLUDING BASE PLATE, SHALL MEET MINIMUM CHAMPY V-NOTCH TOUGHNESS REQUIREMENTS.
- ALL WELDING SHALL CONFORM WITH VERMONT STANDARD SPECIFICATIONS SECTION 506.10.

APPROVAL DRAWING

ISSUED
FEB 10 1997
ISSUED

ERECTION DETAILS ARE ON SHEETS E1 & E2 OF 2 (22) 101635

REV	CHK'D	BY	DATE	REMARKS
			02/07/97	SENT FOR APPROVAL
STATE OF VERMONT AGENCY OF TRANSPORTATION BOX BEAM BRIDGE RAILING TOWN OF BRAINTREE, COUNTY OF ORANGE VT ROUTE 12A, BRIDGE No 6 PROJECT: BRS 0187 (6)				
CUSTOMER F.R. LAFAYETTE, INC.			P.O. No. 12529	ENG. FILE No. 10163501
DRAWN Elzard A. Sikkema			DATE Feb, Jan 24 1997	SHEET No. 01 of 2
CHECKED James L. Schow			DRAWING NUMBER (22) 101635	REV.
APPROVED				

TRINITY INDUSTRIES, INC.
DALLAS, TX. GRANDB, OH. FORT WORTH, TX.
CONOVERVILLE, UT. LIMA, OH. ELIZABETHTOWN, KY.

SYRO
DRAWING NUMBER (22) 101635