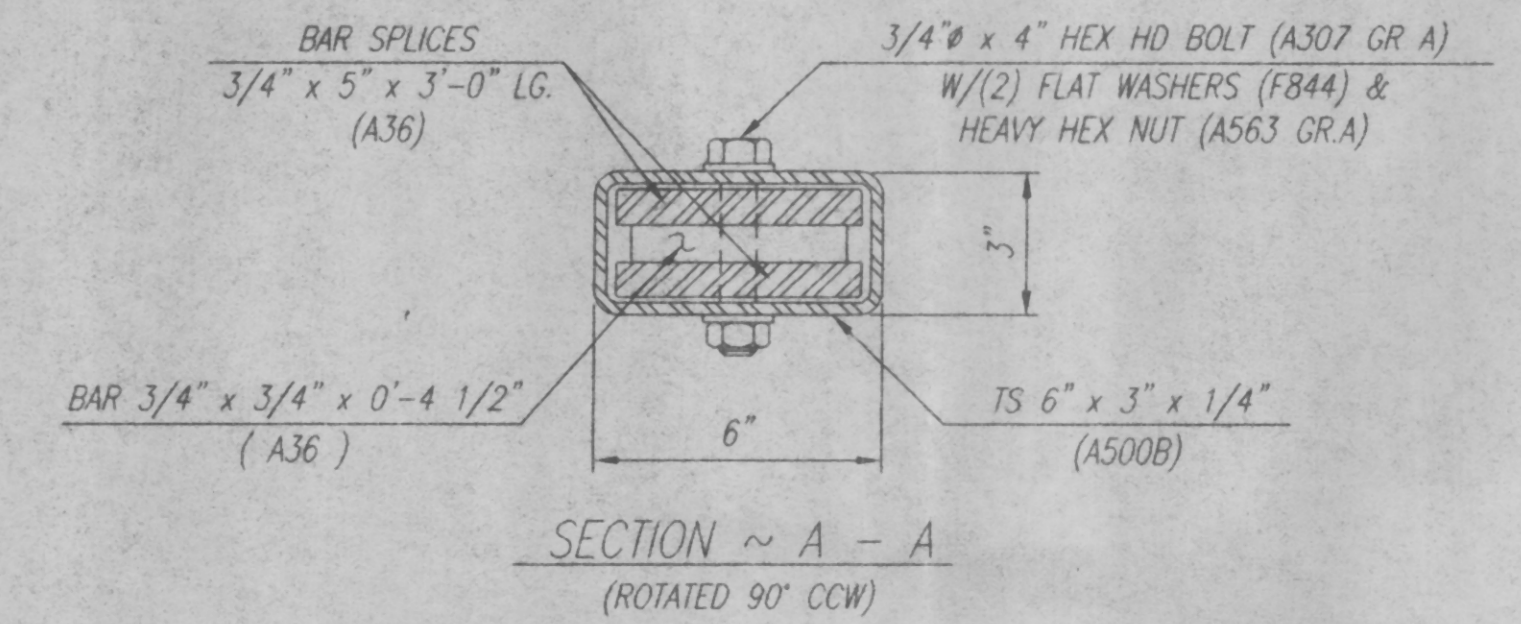
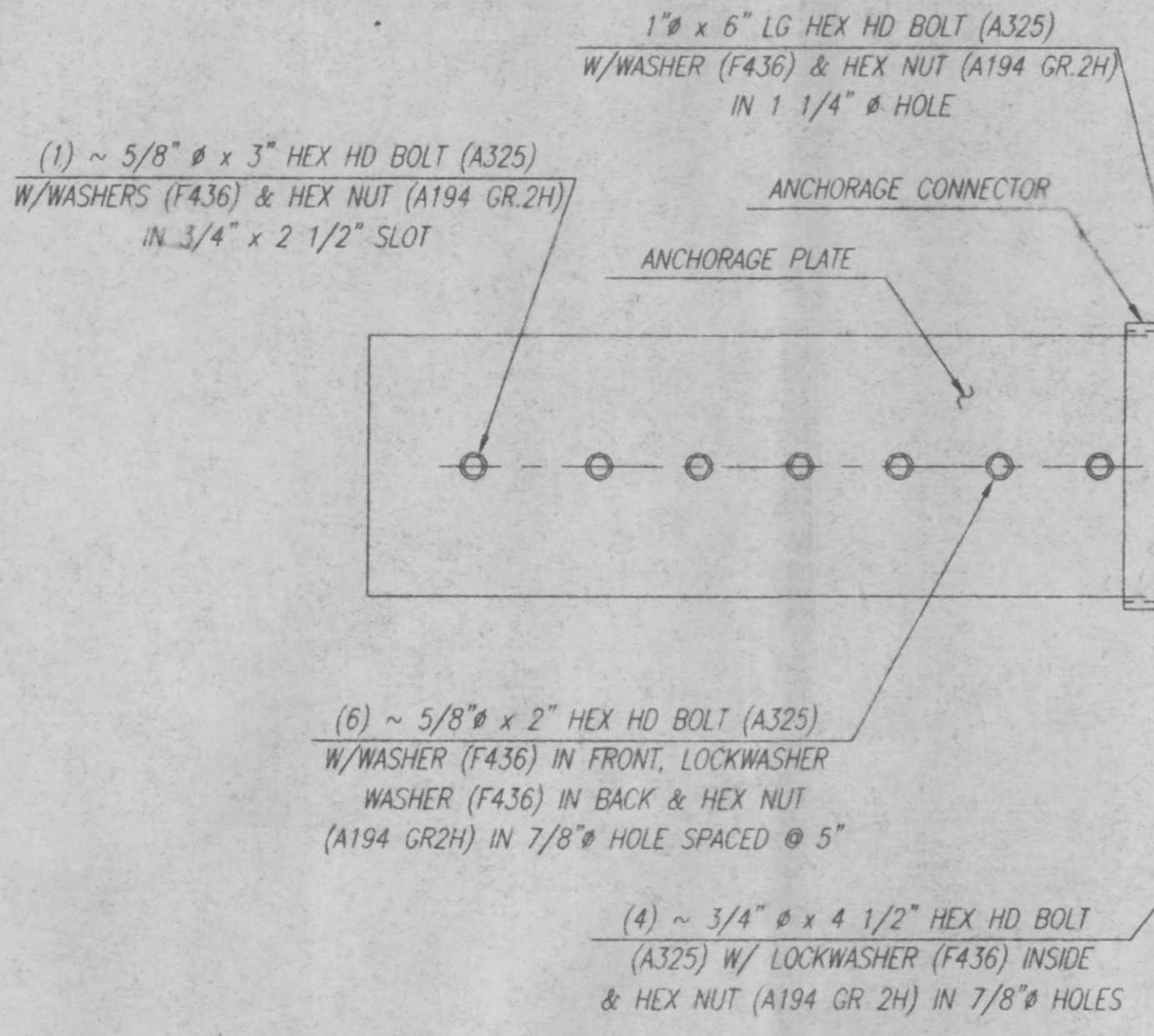


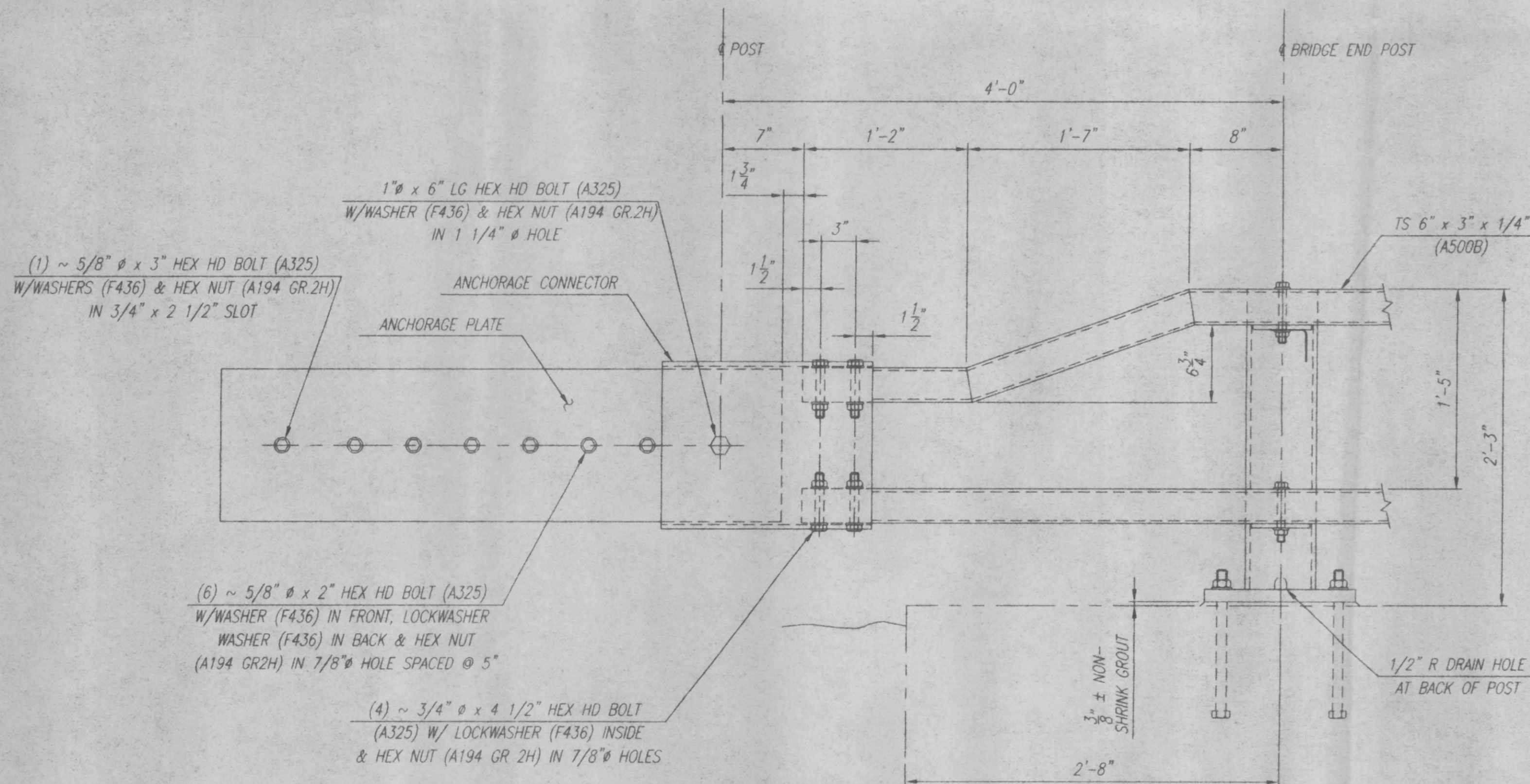
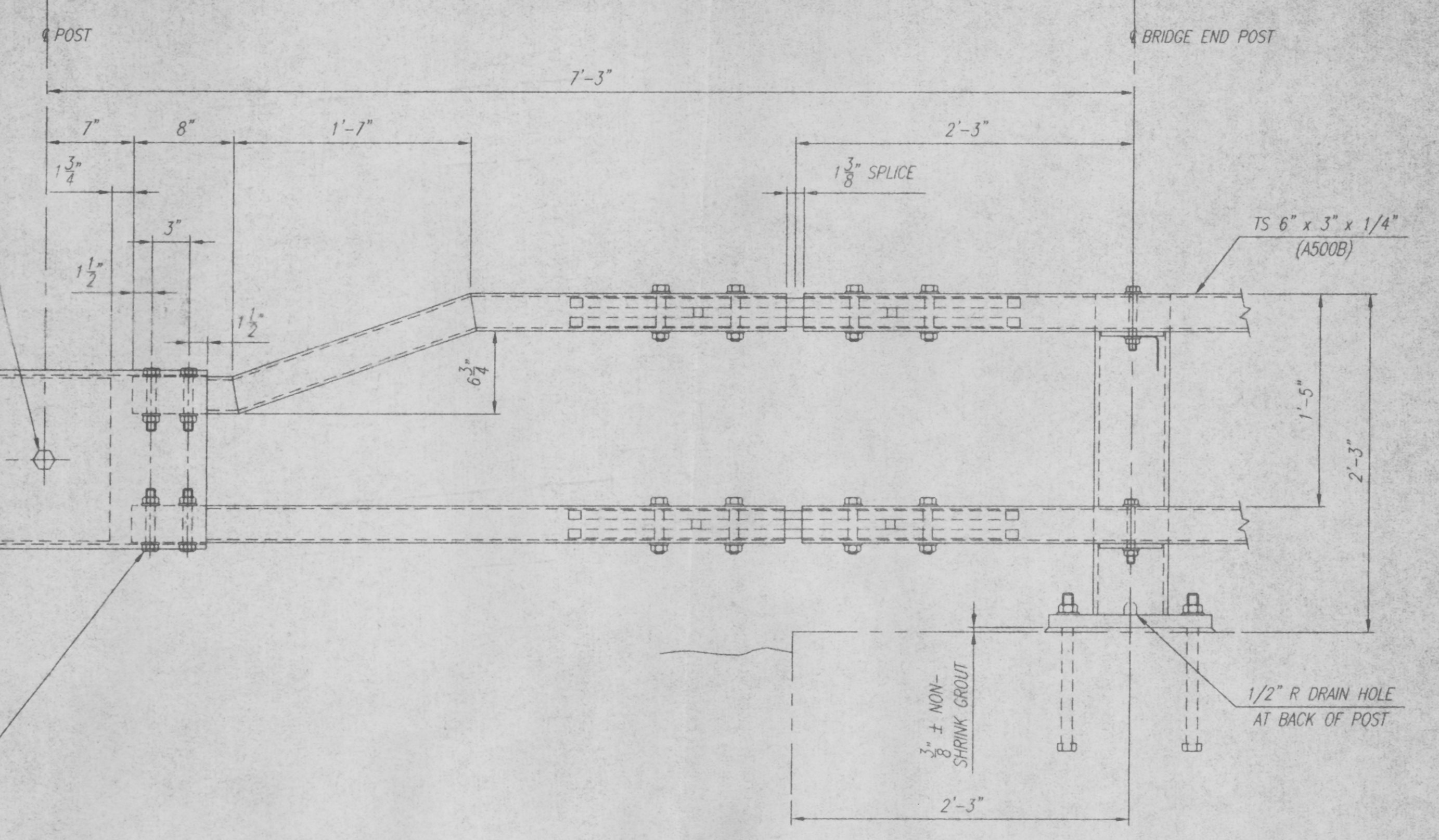
SPLICE DETAIL



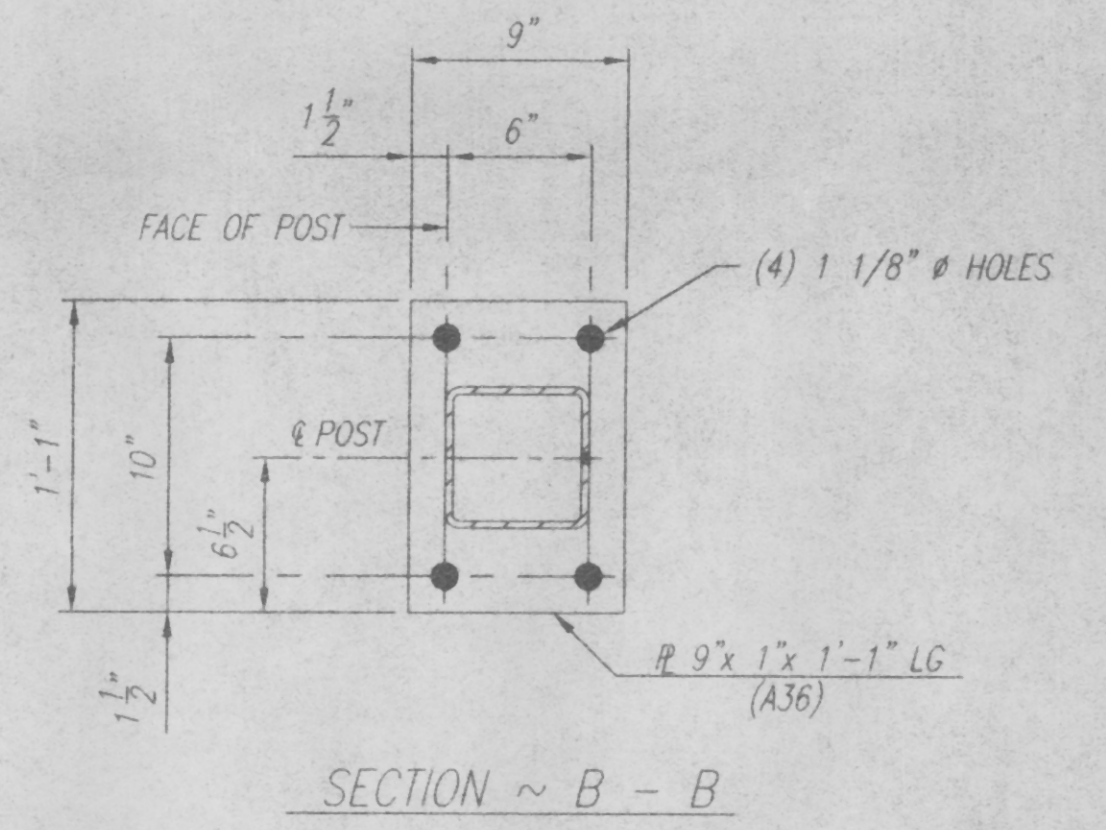
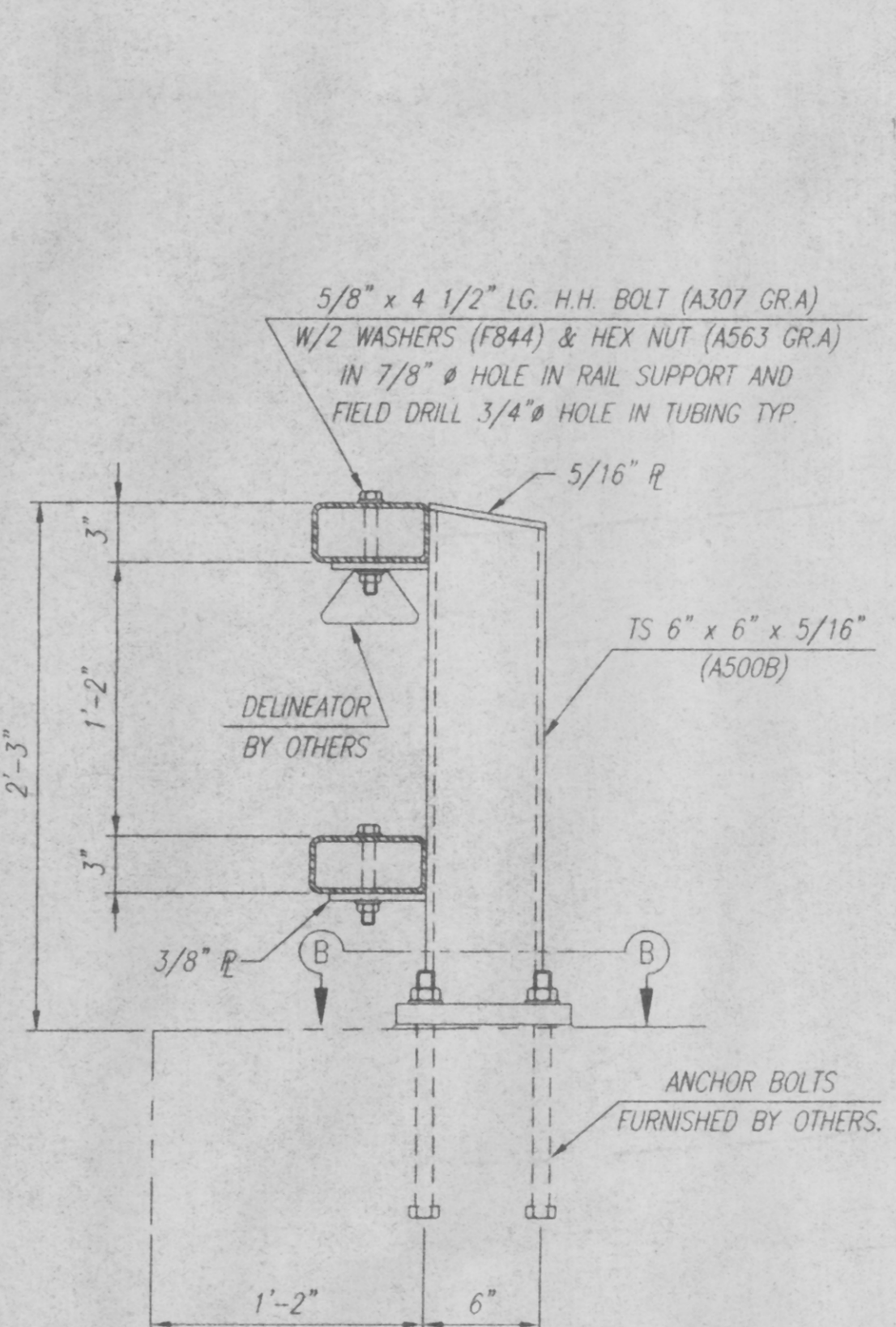
SECTION ~ A - A  
(ROTATED 90° CCW)



END RAIL ERECTION DETAIL  
ABUTMENT No 1 BRIDGE No 6



END RAIL ERECTION DETAIL  
ABUTMENT No 2 BRIDGE No 6



SECTION ~ B - B

APPROVAL DRAWING

DETAILS ARE ON SHEETS 1 & 2 OF 2 (22) 101635

REV.	CHKD.	BY	DATE	REMARKS
			02/07/97	SENT FOR APPROVAL

STATE OF VERMONT  
AGENCY OF TRANSPORTATION  
BOX BEAM BRIDGE RAILING  
VT ROUTE 12A, BRIDGE No 6  
PROJECT: BRS 0187 (6)

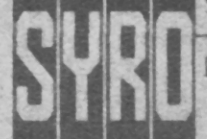
CUSTOMER: F.R. LAFAYETTE, INC. P.O. No. 12529

ENG. FILE No. 101635E2  
SHEET No. E2 of 2

DRAWN: Elzard A. Sikkema  
CHECKED: James L. Schow  
APPROVED:  
DATE: Fri, Jan 24 1997



TRINITY INDUSTRIES, INC.



DRAWING NUMBER  
(22) 101635

ISSUED  
FEB 10 1997  
ISSUED

This drawing and the information shown thereon is the sole property of TRINITY INDUSTRIES, INC. Neither the drawing nor such information is to be used for any purpose other than that for which it was specifically furnished by TRINITY INDUSTRIES, INC. nor is any reproduction authorized without written permission.

I:\DWG\STATES\VT\101635\101635E2.dwg Feb 07 12:52:23 1997 PLOTTED BY: Dipak Chhabl