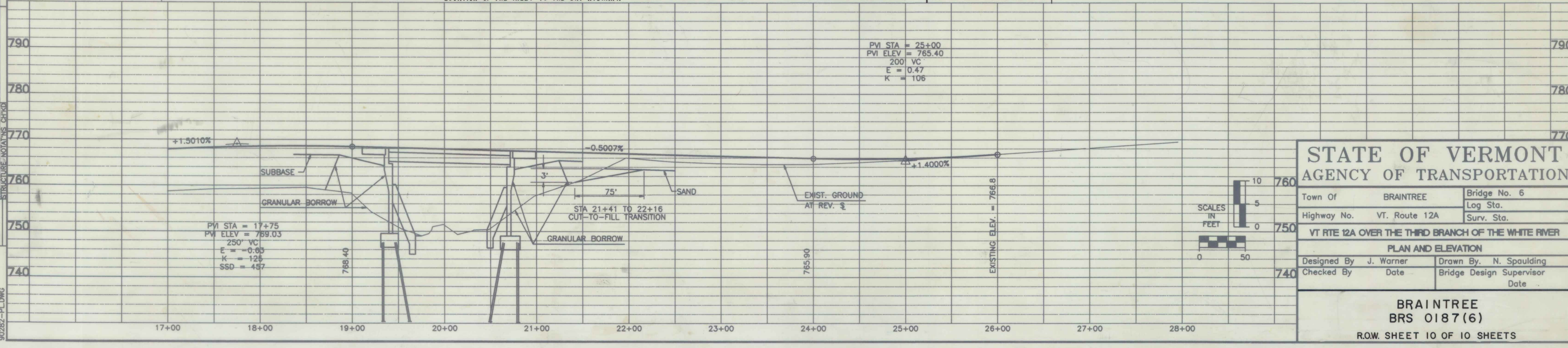
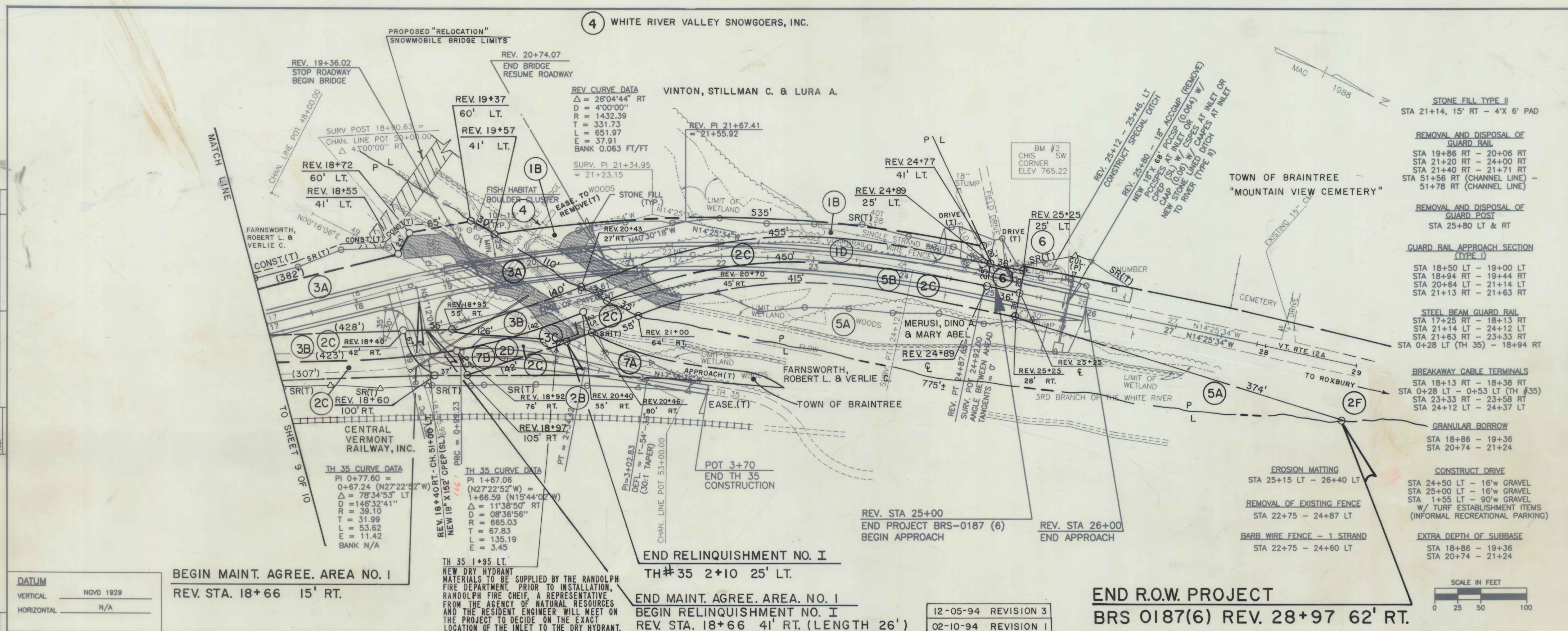


DATE	
BY	
PLAN	
CREATED	
NOTE BOOK	
NO. OF SHEETS	
CHECKED	
BY	

DATE	
BY	
PROFILE	
CREATED	
NOTE BOOK	
NO. OF SHEETS	
CHECKED	
BY	



**STATE OF VERMONT**  
**AGENCY OF TRANSPORTATION**

Town Of	BRAINTREE	Bridge No.	6
Highway No.	VT. Route 12A	Log Sta.	
		Surv. Sta.	
VT RTE 12A OVER THE THIRD BRANCH OF THE WHITE RIVER			
PLAN AND ELEVATION			
Designed By	J. Warner	Drawn By	N. Spaulding
Checked By		Bridge Design Supervisor	
Date		Date	

**BRAINTREE**  
**BRS 0187(6)**  
 R.O.W. SHEET 10 OF 10 SHEETS