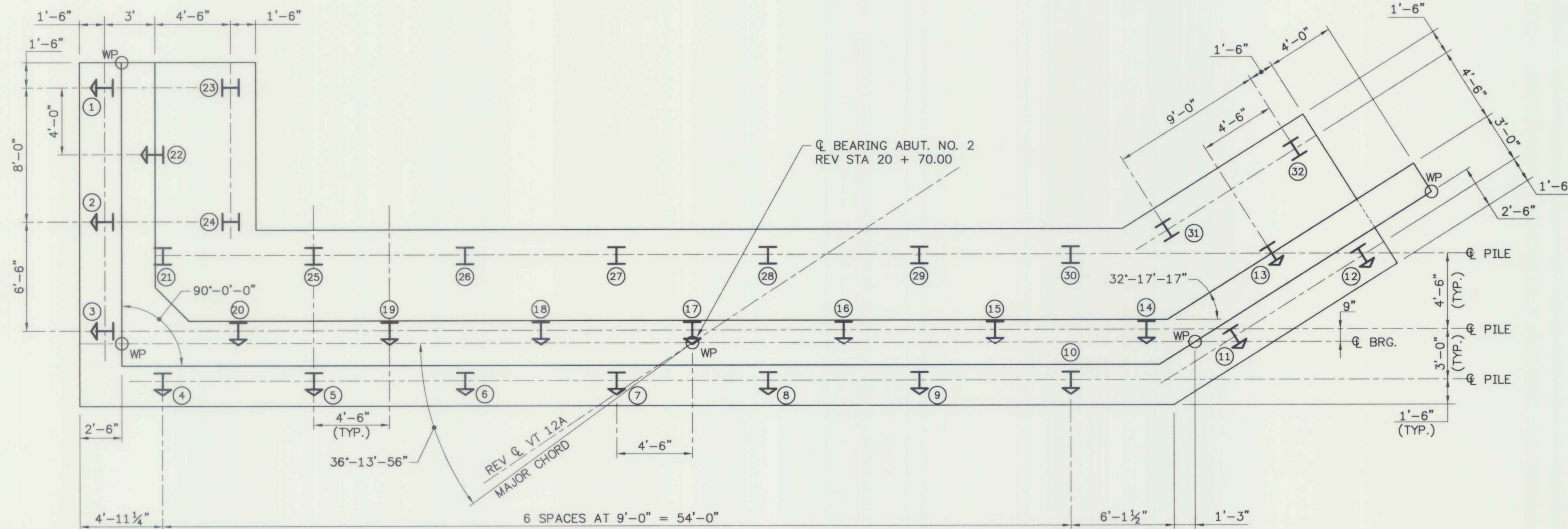
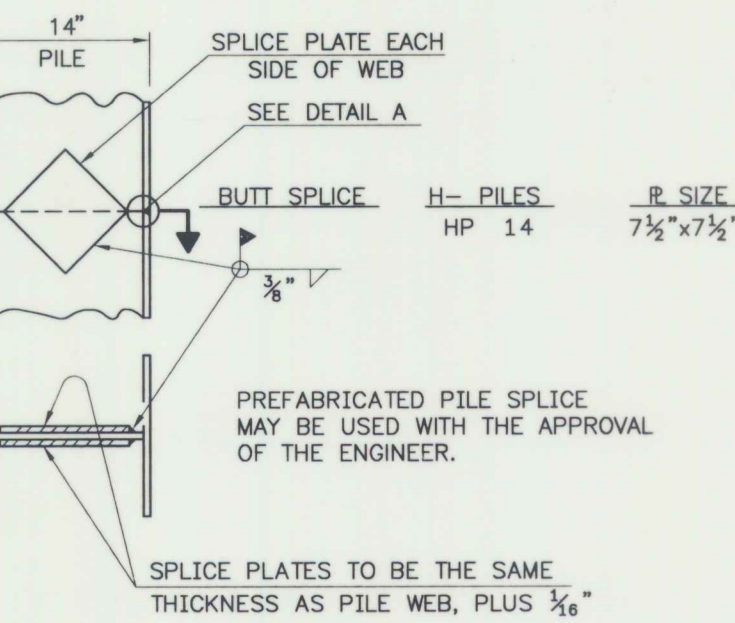


**H-PILE LAYOUT  
ABUTMENT NO. 1**  
SCALE: 1/4"=1'-0"



**H-PILE LAYOUT  
ABUTMENT NO. 2**  
SCALE: 1/4"=1'-0"

B-U4a (STEEL BACKING) or  
B-U4b (BACK GOUGING) FULL  
PENETRATION, FLANGE ONLY (TYP.)



- I - INDICATES VERTICAL HP14x73 PILE DRIVEN TO LEDGE. ALLOWABLE LOAD PER PILE = 192.8 KIPS.
- ↓ - INDICATES PILE BATTERED AT 2 ON 12

<b>STATE OF VERMONT AGENCY OF TRANSPORTATION</b>			
Town Of	BRAINTREE	Bridge No.	6
Highway No.	VT RTE 12A	Log Sta.	
		Surv. Sta.	
VT RTE 12A OVER 3RD BRANCH OF THE WHITE RIVER			
<b>PILE LAYOUT</b>			
Designed By	K.G. Marshall	Drawn By	A. Setas
Checked By	E.M. Stumph	Date	1/95
		CLD Project Manager	C.R. BEAN
		Date	1/95
<b>PROJECT</b>	BRAINTREE	<b>PROJECT NO.</b>	BR 0187(6)
I.G.C. Info.		Bridge Sheet No. BR 120 Sheet 44 Of 79	

