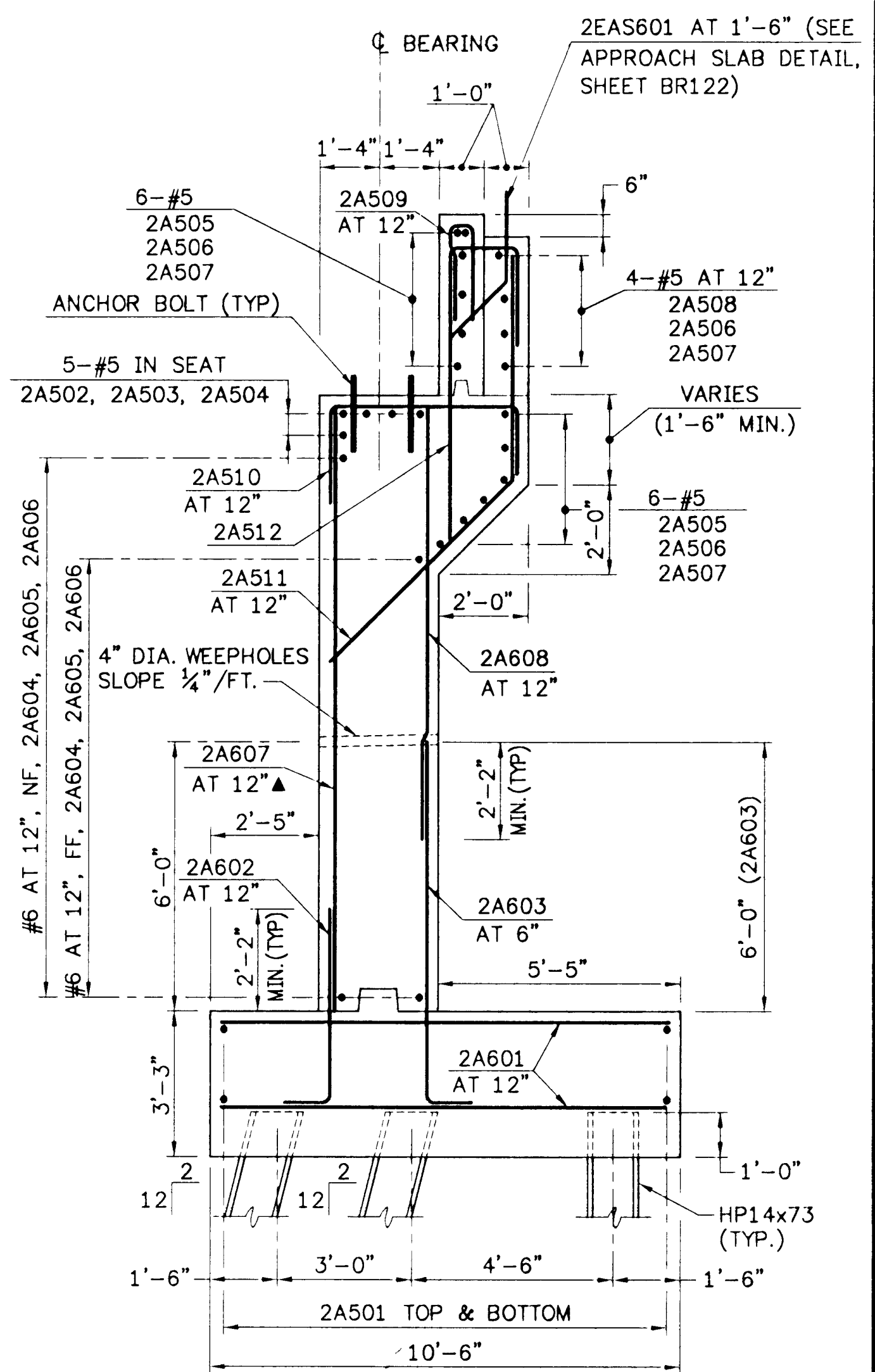


ABUTMENT NO. 2 PLAN
SCALE: 1/4"=1'-0"

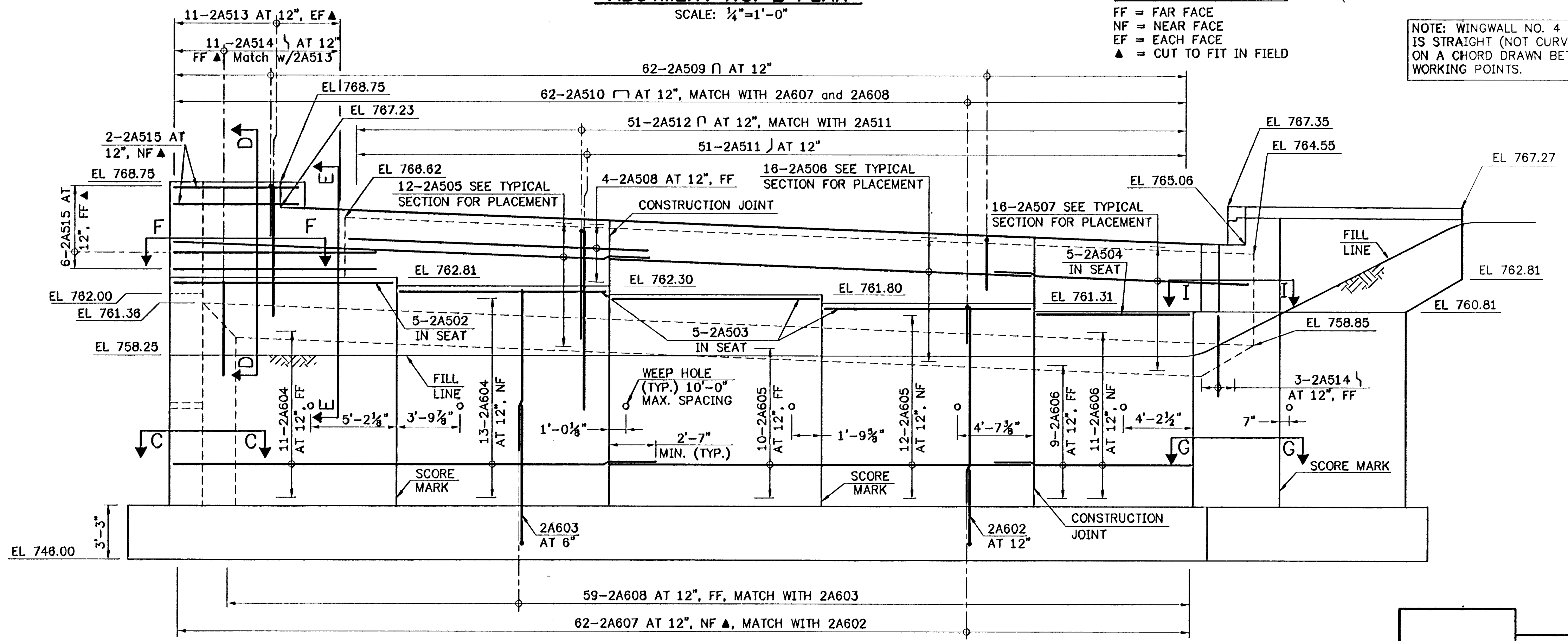
KEY
FF = FAR FACE
NF = NEAR FACE
EF = EACH FACE
▲ = CUT TO FIT IN FIELD

NOTE: WINGWALL NO. 4 GEOMETRY IS STRAIGHT (NOT CURVED), BASED ON A CHORD DRAWN BETWEEN THE WORKING POINTS.



TYPICAL ABUTMENT SECTION
Scale: 3/8"=1'-0"

SEE BRIDGE SHEETS BR 118 AND BR 119 FOR ADDITIONAL SECTIONS AND DETAILS.
SEE BRIDGE SHEET BR 121 FOR FOOTING REINFORCING.
SEE BRIDGE SHEET BR 118 FOR WINGWALL REINFORCING AND ADDITIONAL SECTIONS.



ABUTMENT NO. 2 ELEVATION
SCALE: 1/4"=1'-0"

STATE OF VERMONT		
AGENCY OF TRANSPORTATION		
Town Of	BRAINTREE	Bridge No. 6
Highway No.	VT RTE 12A	Log Sta.
		Surv. Sta.
VT RTE 12A OVER 3RD BRANCH OF THE WHITE RIVER		
ABUTMENT NO. 2 DETAILS		
Designed By	E.M.Stumph	Drawn By M.J.Lamper
Checked By	Date	CLD Project Manager
E.M.Stumph	1/95	C.R.Bean Date 1/95
PROJECT	BRAINTREE	PROJECT NO.
		BRS 0187(6)
I.G.C. Info.		
Bridge Sheet No.	BR 117	Sheet 41 Of 79



90282ABT (1=1)VIEW: PLOT2