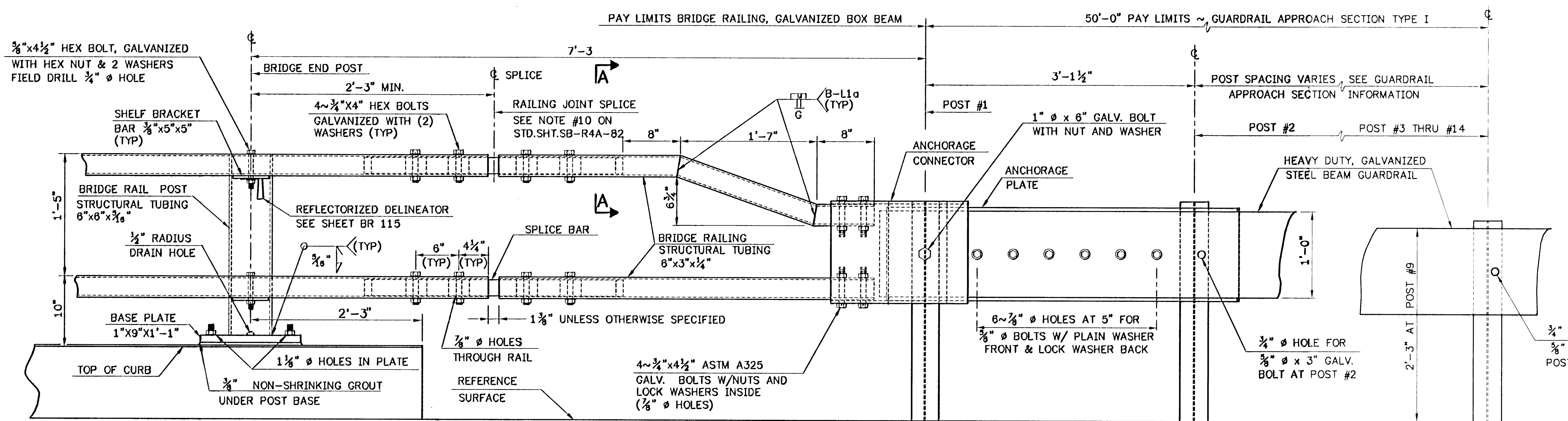


**GUARDRAIL  
APPROACH SECTION  
TYPE I**

POST NO.	SPACING
1	
2	3'-1 1/2"
3	3'-1 1/2"
4	3'-1 1/2"
5	3'-1 1/2"
6	3'-1 1/2"
7	3'-1 1/2"
8	3'-1 1/2"
9	3'-1 1/2"
10	4'-2"
11	4'-2"
12	6'-3"
13	6'-3"
14	6'-3"

50'-0" PAY LENGTH GUARDRAIL APPROACH SECTION, TYPE I

FOR ADDITIONAL DETAILS OF BRIDGE RAILING, GALVANIZED BOX BEAM, SEE STD. DWGS.



FOR ADDITIONAL INFORMATION ON THE CONNECTION/TRANSITION DETAILS AT POST NO. 1, SEE SHEET BR 115

**STATE OF VERMONT  
AGENCY OF TRANSPORTATION**

Town Of	BRAINTREE	Bridge No.	6
Highway No.	VT RTE 12A	Log Sta.	
		Surv. Sta.	

VT RTE 12A OVER 3RD BRANCH OF THE WHITE RIVER  
**BRIDGE RAILING DETAILS AT ABUTMENT NO. 1**

Designed By	VAOT	Drawn By	VAOT
Modified & Checked By	Date	CLD Project Manager	Date
E.M.Stumph	1/95	C.R.Bean	1/95

<b>PROJECT</b>	BRAINTREE	<b>PROJECT NO.</b>	BRS 0187(6)
----------------	-----------	--------------------	-------------

I.G.C. Info. Translated To AutoCAD  
Bridge Sheet No. BR 113 Sheet 37 Of 79



90282RL1.dwg (1=8)plot