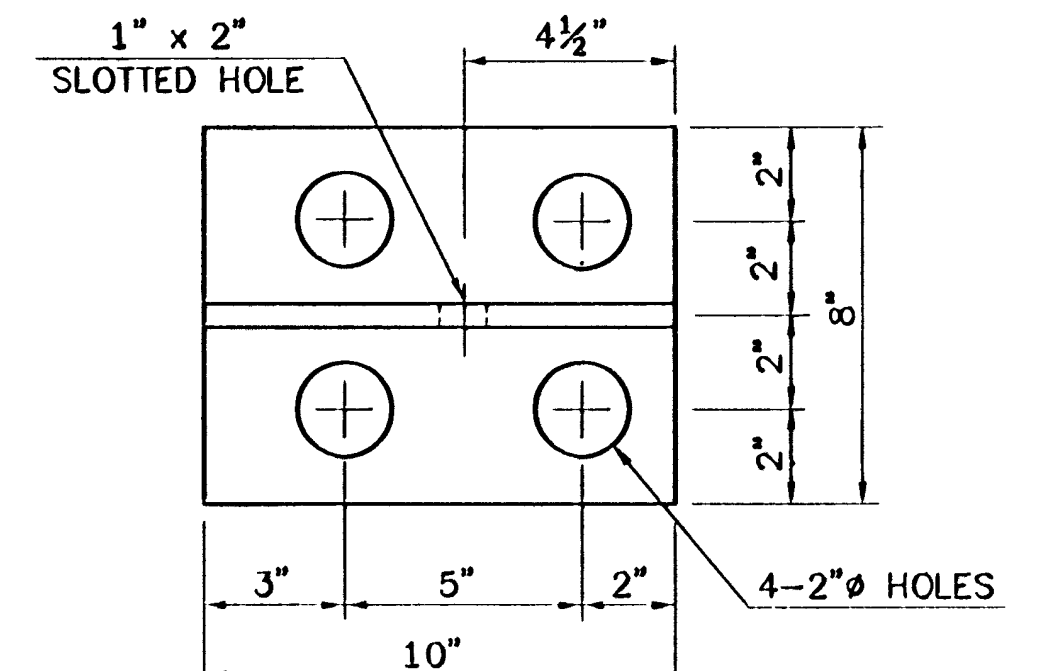


TYPICAL SECTION BETWEEN GIRDERS AT ABUT #1
SCALE: 3" = 1'-0" (NORMAL TO Q BRG.)

TYPICAL SECTION AT GIRDERS AT ABUT #1
SCALE: 3" = 1'-0" (NORMAL TO Q BRG.)

TEMP	"A" DIST
0°F	1 1/8"
15°F	1 1/4"
30°F	1 3/8"
45°F	1 1/2"
60°F	1 5/8"
75°F	1 3/4"
90°F	1 7/8"
105°F	1"

- DETAILS ON THIS SHEET ARE FOR ITEM 516.10 "BRIDGE EXPANSION JOINTS"
- PREFORMED FABRIC MATERIAL SHALL BE CONTINUOUS AND SHALL CONFORM TO SUBSECTION 707.07.
- BUTYL RUBBER TAPE SHALL CONFORM TO AASHTO SPECIFICATION M-198, TYPE II.
- THE FINAL FINISH OF THE EXPANSION DEVICE SHALL BE COVERED DURING THE PLACING OF BRIDGE DECK CONCRETE.
- ALL STEEL COMPONENTS SHALL BE AASHTO M270 GRADE 36 GALVANIZED OR METALIZED AS PER SUBSECTION 508.15 (a) OR (b) UNLESS OTHERWISE NOTED.
- THE ITEM "BRIDGE EXPANSION JOINT" SHALL INCLUDE THE FABRICATION AND ERECTION OF THE COMPLETE JOINT ASSEMBLY INCLUDING ALL STEEL PLATES, BRACKETS, ANGLES, WELDED STUDS OR RODS, PREFORMED FABRIC DRAIN TROUGH MATERIAL AND PLASTIC DRAIN TUBES, BUTYL RUBBER TAPE AND ANY OTHER MISCELLANEOUS MATERIAL NECESSARY TO INSTALL JOINT.
- THE 4" x 8" x 1/2" ANGLES SHALL BE FURNISHED AS ONE CONTINUOUS PIECE. THE 1 1/4" x 5 1/4" BARS EACH SIDE OF THE JOINT SHALL BE PROVIDED IN TWO EQUAL LENGTHS.
- COAT CONCRETE CONTACT SURFACES WITH AN EPOXY BONDING COMPOUND MEETING THE REQUIREMENTS OF SUBSECTION 719.02. PAYMENT SHALL BE INCLUDED IN THE UNIT PRICE BID FOR ITEM 516.10 "BRIDGE EXPANSION JOINT".
- A 1" DIAMETER PLASTIC DRAIN TUBE SHALL BE INSTALLED AS SHOWN AT THE FACE OF CURB ON LOW SIDE. THE UPPER END IS TO BE PLUGGED WITH STEEL WOOL AND THE LOWER END IS TO EXTEND BELOW THE BOTTOM OF THE ADJACENT GIRDER. THE DRAIN TUBES SHALL BE FASTENED TO THE GIRDERS USING A METHOD APPROVED BY THE ENGINEER.
- FILL COUNTERBORED HOLES WITH HOT POURED JOINT SEALER. PAYMENT FOR THE WORK SHALL BE SUBSIDIARY TO ITEM 516.10.
- PAYMENT FOR WATERSTOP SHALL BE SUBSIDIARY TO CONCRETE PAY ITEM.
- A DRIP BEAD OF 1/4" x 7" STRIP OF PREFORMED MATERIAL SHALL BE CEMENTED TO THE BOTTOM OF THE FABRIC TROUGH USING AN ADHESIVE APPROVED BY THE MANUFACTURER. THE DRIP BEAD SHALL BE APPLIED 1" FROM THE DOWNSPOUT END OF THE TROUGH.
- FABRIC TROUGH SHALL BE THOROUGHLY CLEANED AND FLUSHED AFTER PAVING OPERATION.
- THE EXPANSION JOINT SHALL BE SHOP ASSEMBLED AND SHIPPED AS ONE UNIT.



BRACKET PLAN
SCALE: 3" = 1'-0"

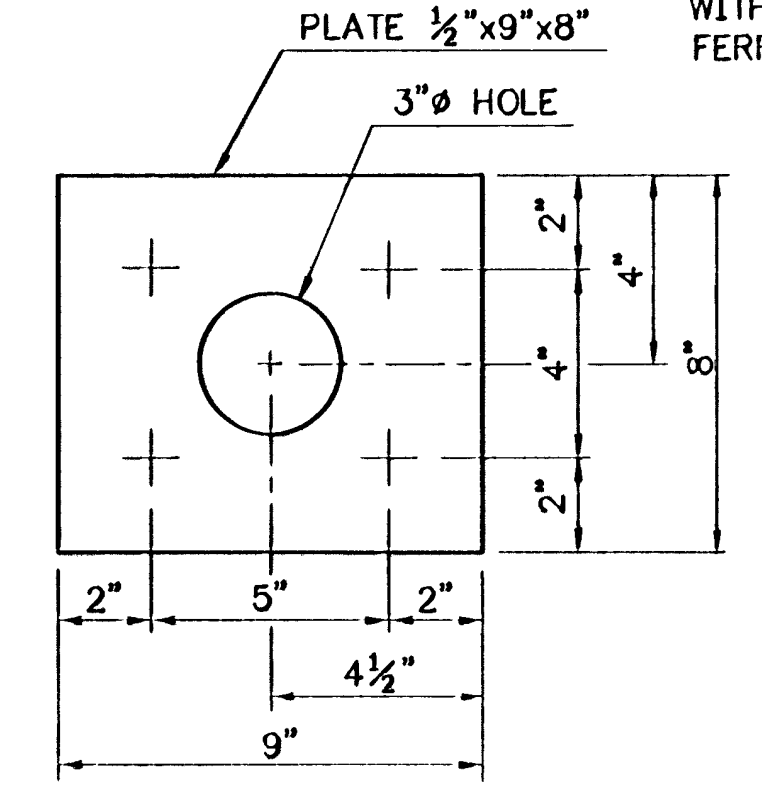
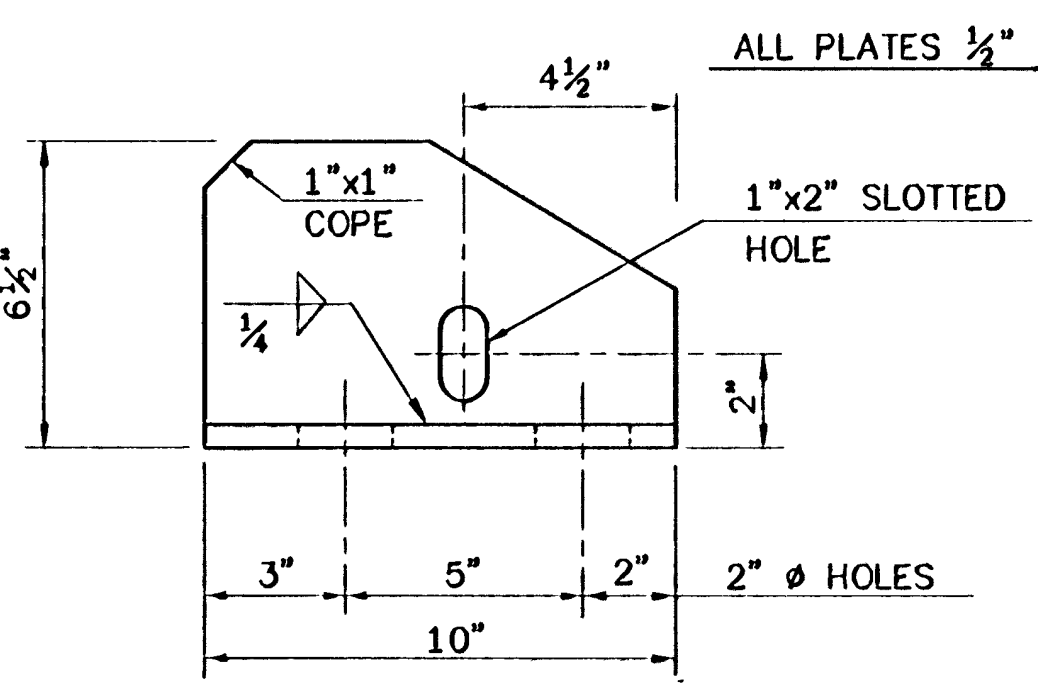
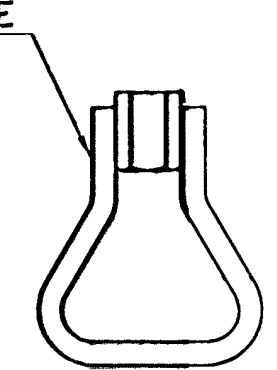


PLATE PLAN VIEW
SCALE: 3" = 1'-0"



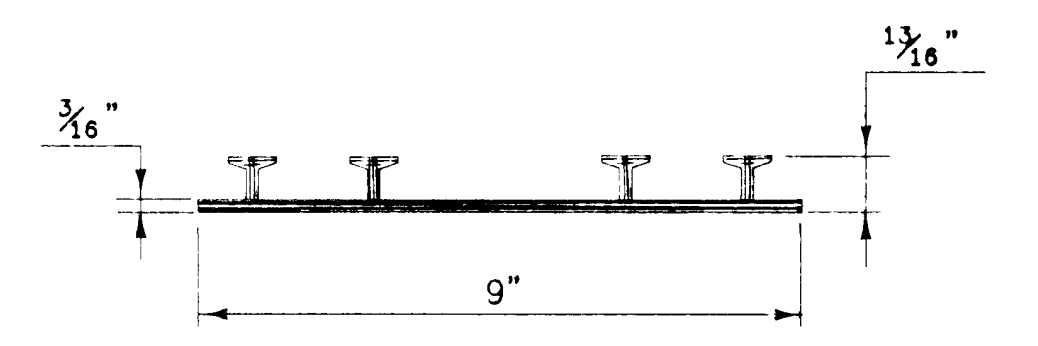
BRACKET ELEVATION
SCALE: 3" = 1'-0"



ANCHOR FERRULE DETAIL
SCALE: 3" = 1'-0"

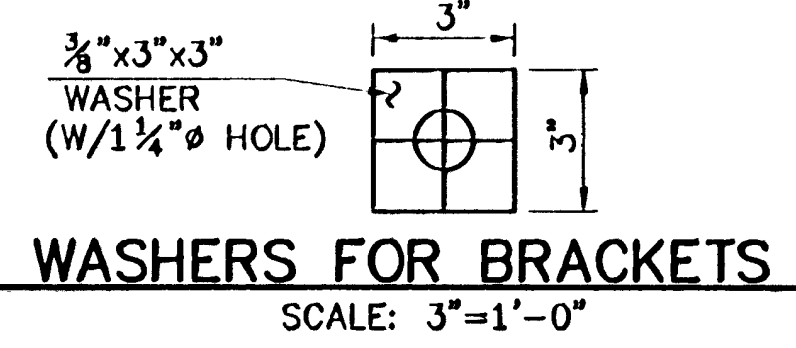
NOTE: THREADED CONCRETE ANCHORS MAY BE SUBSTITUTED FOR CLOSED THREADED FERRULE

** THESE DIMENSIONS ARE THEORETICAL AND MAY CHANGE DEPENDING UPON THE OUTCOME OF THE BEAM PROFILES



P. V. C. WATERSTOP FOR CONSTRUCTION JOINTS

THE COSTS FOR P. V. C. WATERSTOP SHALL BE INCLUDED IN THE UNIT PRICE BID FOR CONCRETE. OTHER CONFIGURATIONS MAY BE USED UPON APPROVAL OF THE STRUCTURES ENGINEER.



WASHERS FOR BRACKETS
SCALE: 3" = 1'-0"

DETAIL "A"
SCALE: 3" = 1'-0"

STATE OF VERMONT			
AGENCY OF TRANSPORTATION			
Town Of	BRAINTREE	Bridge No.	6
Highway No.	VT RTE 12A	Log Sta.	
		Surv. Sta.	
VT RTE 12A OVER 3RD BRANCH OF THE WHITE RIVER			
EXPANSION JOINT DETAILS			
Designed By	VAOT	Drawn By	VAOT
Modified & Checked By	Date	CLD Project Manager	Date
E.M.Stumph	1/95	C.R.Bean	1/95
PROJECT	BRAINTREE	PROJECT NO.	BRS 0187(6)
I.G.C. Info. Translated To AutoCAD			
Bridge Sheet No.	BR 111	Sheet	35 Of 79



50282EX.dwg (1=4) (clt)