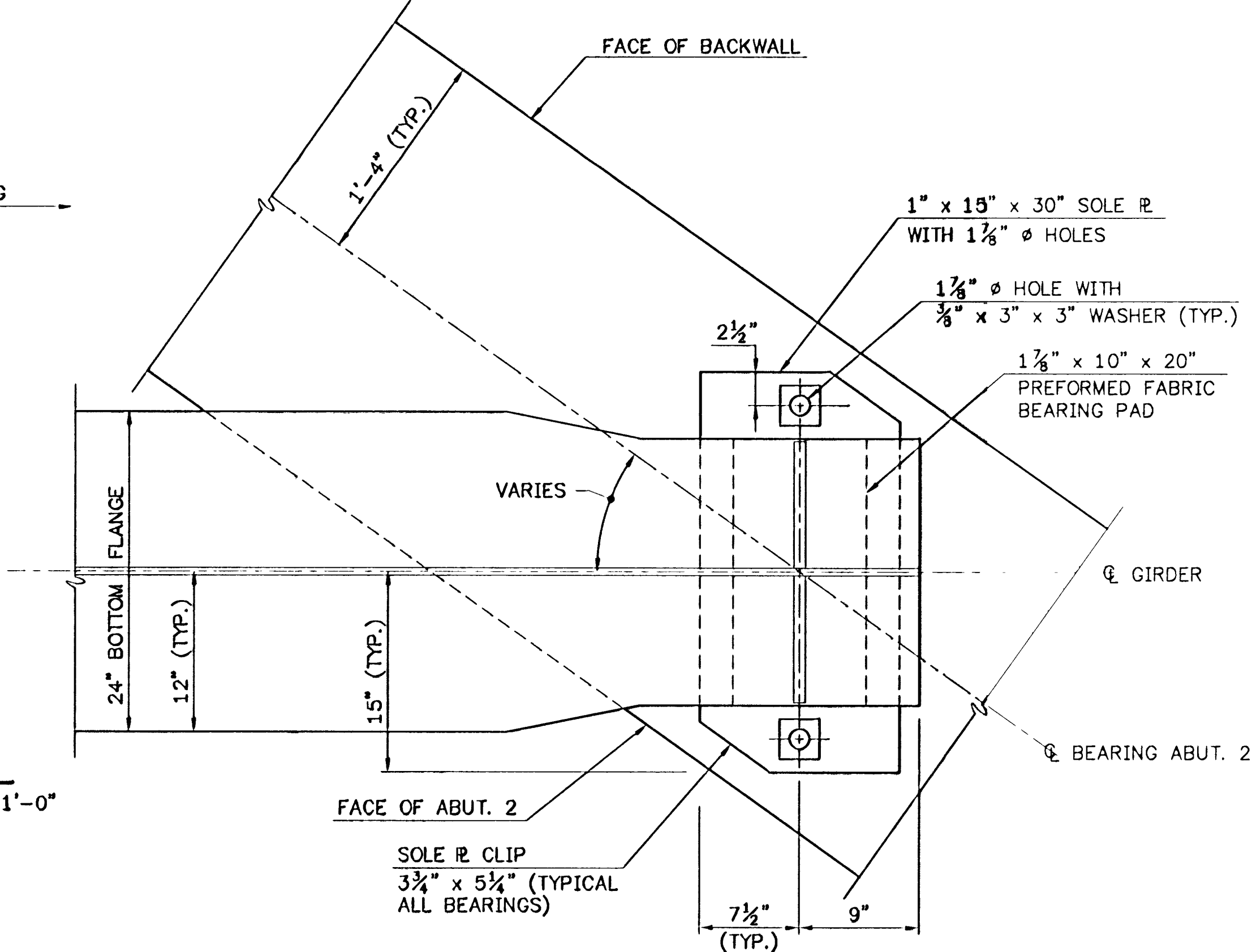


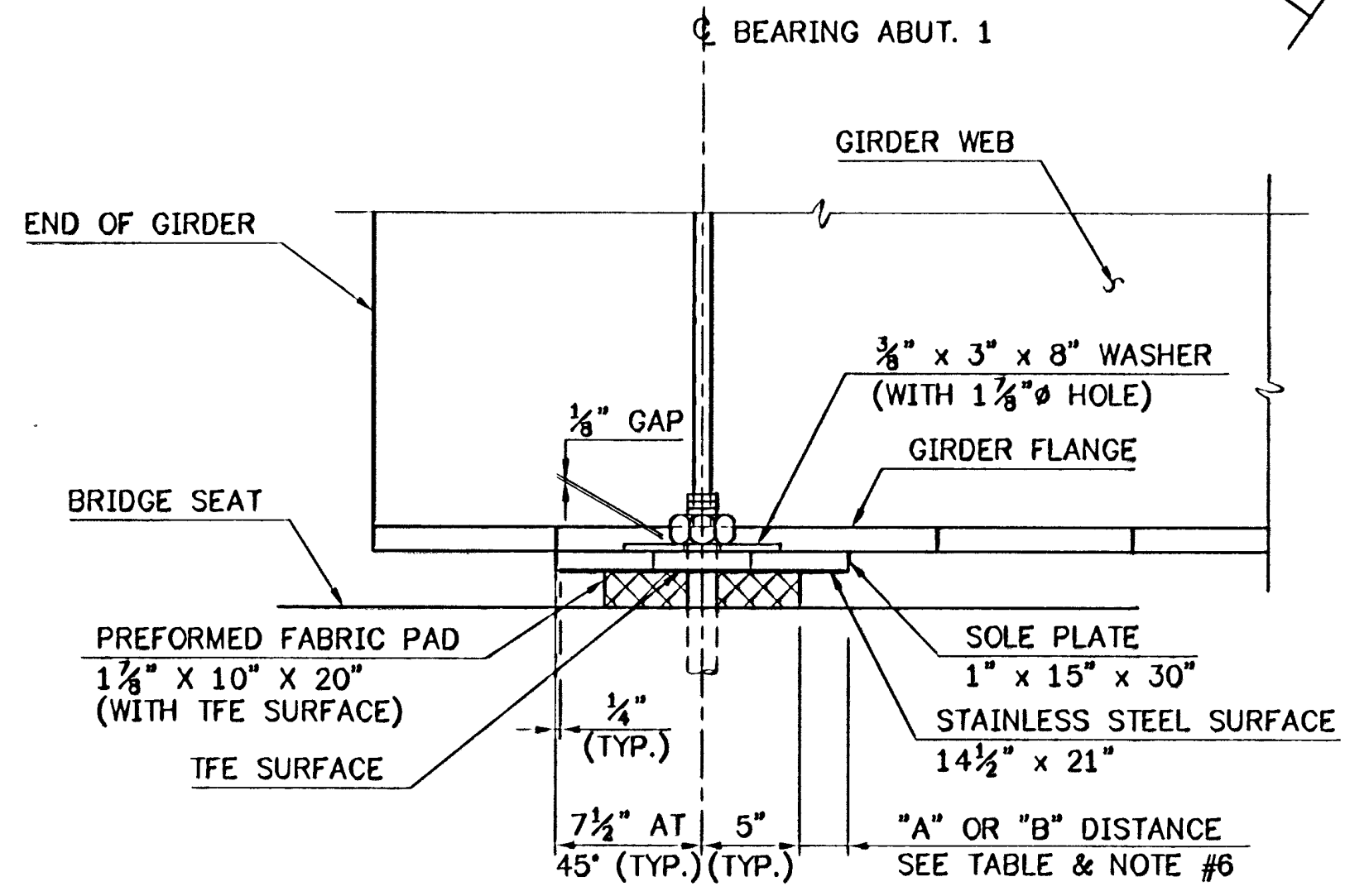
PLAN
SCALE: 1 1/2"=1'-0"



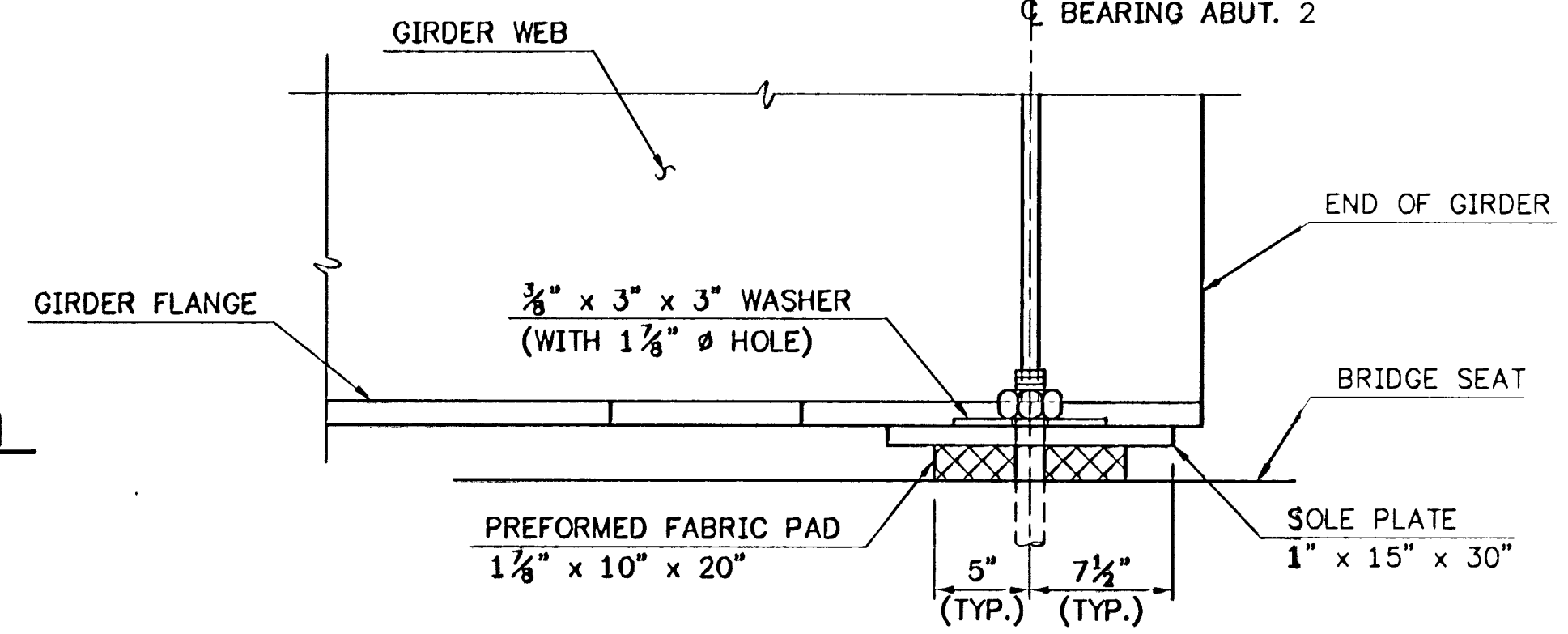
PLAN
SCALE: 1 1/2"=1'-0"

BEARING NOTES:

- BEARINGS SHALL CONFORM TO APPLICABLE SUBSECTIONS OF SECTION 531 AND 731. BEARINGS SHALL BE FABRIC REINFORCED ELASTOMERIC BEARING PADS WITH STEEL SOLE PLATES.
- BEARINGS SHALL BE PAID FOR UNDER THE ITEM 531.10 "BEARING DEVICE ASSEMBLY".
- SHOP DRAWINGS CONFORMING TO SUBSECTION 531.03 SHALL BE SUBMITTED TO INCLUDE WELDING AND BONDING PROCEDURES.
- FABRICATION DRAWINGS SHALL IDENTIFY THE NUMBER OF LAYERS OF VULCANIZED SHEETS AND CORRESPONDING SHEET THICKNESS TO BE USED FOR FABRICATING THE BEARING PAD AND SHALL INCLUDE DETAILED PROCEDURES FOR BONDING THESE SHEETS TOGETHER.
- THE CONCRETE SURFACE UNDER THE BEARING DEVICE SHALL BE LEVEL.
- "A" DISTANCE IS THE FINAL SETTING FOR THE BEARING AFTER THE CONCRETE SLAB, CURB, PAVEMENT AND BRIDGE RAIL ARE PLACED. "B" DISTANCE IS LISTED FOR SETTING THE BEARING AFTER THE STRUCTURAL STEEL IS ERECTED AND BEFORE THE CONCRETE DECK IS Poured. THE DIFFERENCE IS THE THEORETICAL ELONGATION OF THE BOTTOM FLANGE DUE TO THE DEAD LOAD DEFLECTION. THE FINAL "A" DISTANCE, AS SHOWN IN THE TABLE, MUST BE ATTAINED WITHIN 1/8".
- DESIGN CRITERIA:
 - AVERAGE BEARING PRESSURE = 800 PSI
 - MINIMUM ALLOWABLE DESIGN ROTATION = 0.015 RADIAN
 - HORIZONTAL CAPACITY SHALL BE A MINIMUM OF 10% OF THE VERTICAL
 - DESIGN LOAD PER BEARING = 156 KIPS (DEAD LOAD PLUS LIVE LOAD WITHOUT IMPACT).
- ALL STEEL IN BEARING DEVICES (EXCEPT STAINLESS) SHALL BE AASHTO M270 GRADE 36.
- ANCHOR BOLTS SHALL HAVE A MINIMUM OF 15" EMBEDMENT INTO THE CONCRETE AND SHALL CONFORM TO SUBSECTION 714.08.
- ALL BEARING DEVICES SHALL BE GALVANIZED OR METALIZED AS PER SUBSECTIONS 531.04(b) AND 506.15(a) & (b). AREAS OF GALVANIZING OR METALIZING DAMAGED BY FIELD WELDING OR HANDLING SHALL BE PAINTED WITH AN APPROVED SEALANT IN ACCORDANCE WITH SUBSECTION 531.04.
- ALL THE ANCHOR BOLTS, NUTS AND WASHERS SHALL BE GALVANIZED. ALL WASHERS SHALL BE 3/8" PLATE (MINIMUM). PAYMENT FOR ANCHOR BOLTS, NUTS AND WASHERS SHALL BE INCLUDED IN THE UNIT BID PRICE FOR "BEARING DEVICE ASSEMBLY".

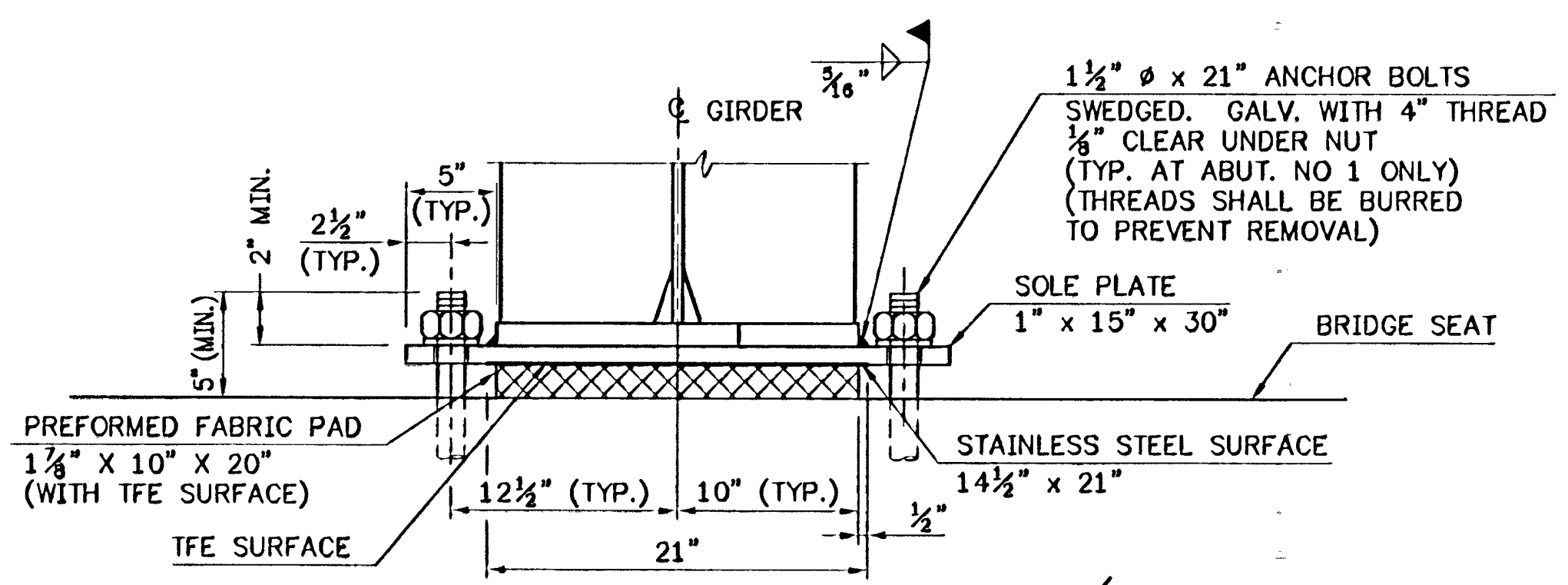


SIDE ELEVATION
SCALE: 1 1/2"=1'-0"

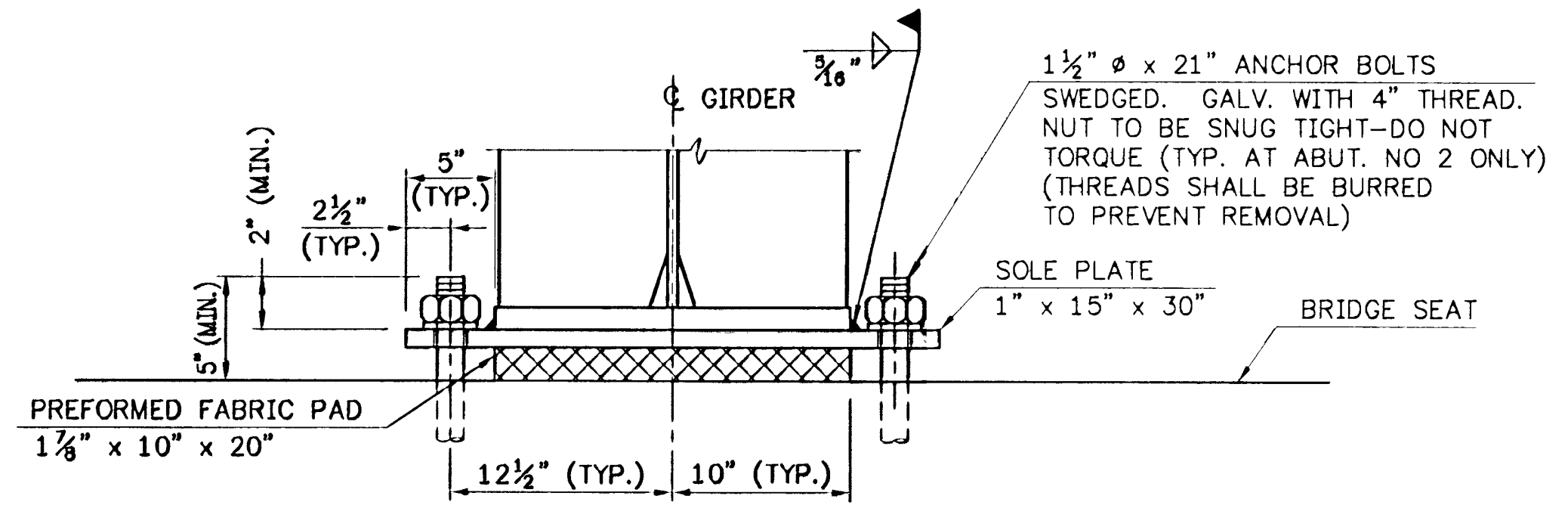


SIDE ELEVATION
SCALE: 1 1/2"=1'-0"

TEMP	"A" DIST.	"B" DIST.
0°F	2 1/8"	3 1/8"
15°F	2 1/16"	3 1/16"
30°F	2 3/8"	3 1/4"
45°F	2 1/2"	3 3/8"
60°F	2 3/8"	2 13/16"
75°F	2 1/16"	2 13/16"
90°F	2 1/16"	2 13/16"
105°F	1 7/8"	2 1/2"



FRONT VIEW
SCALE: 1 1/2"=1'-0"



FIXED BEARING DETAILS

STATE OF VERMONT
AGENCY OF TRANSPORTATION

Town Of	BRAINTREE	Bridge No.	6
Highway No.	VT RTE 12A	Log Sta.	
		Surv. Sta.	
VT RTE 12A OVER 3RD BRANCH OF THE WHITE RIVER			
BEARING DETAILS			
Designed By	E.M.Stumph	Drawn By	S.R.Langevin
Checked By	E.M. Stumph	Date	1/95
		Date	1/95
PROJECT		PROJECT NO.	
BRAINTREE		BRS 0187(6)	
I.G.C. Info.			
Bridge Sheet No.	BR 109	Sheet	33 Of 79



3028252.dwg (1=6)