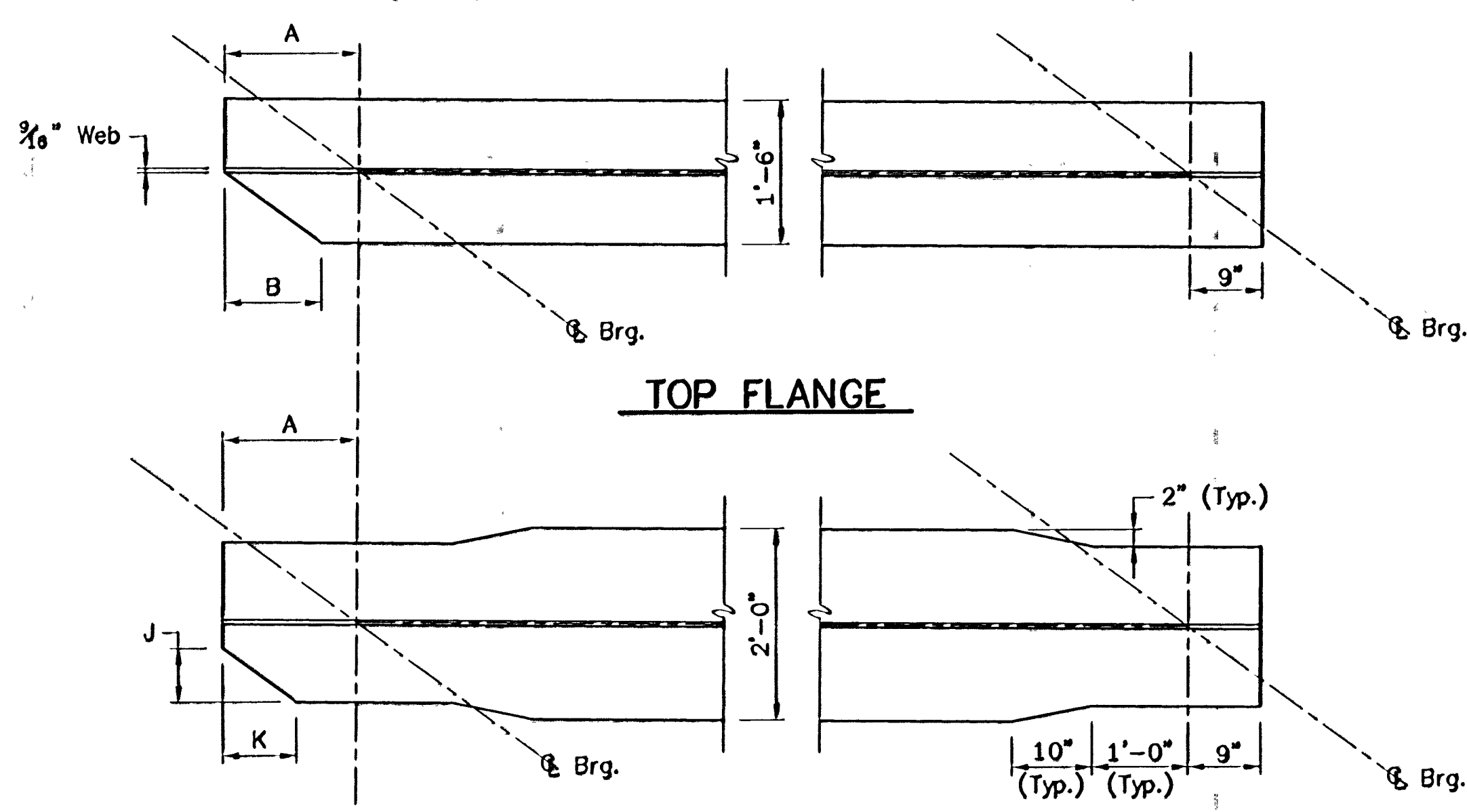
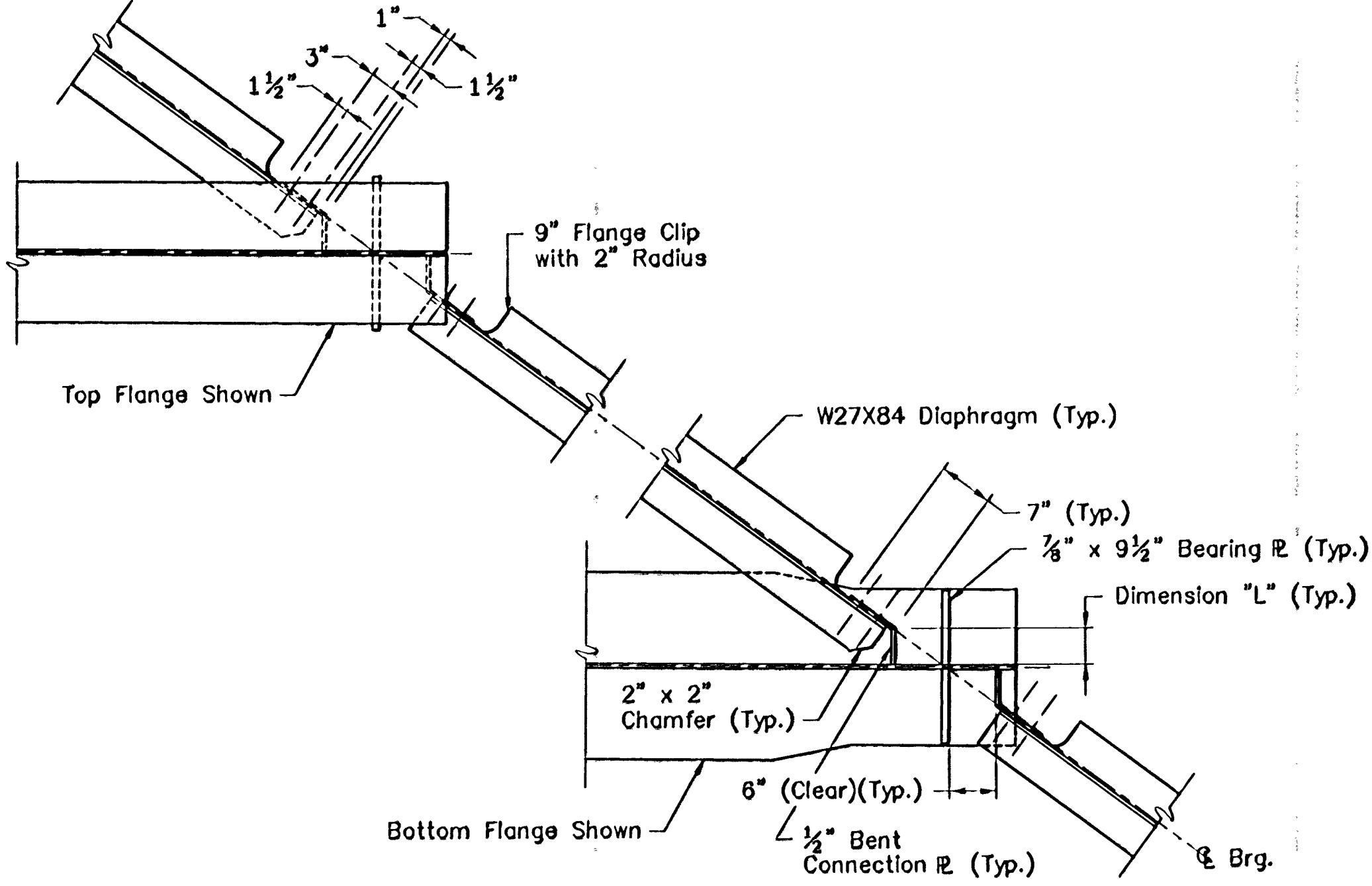


ABUT. NO. 1 (EXP)

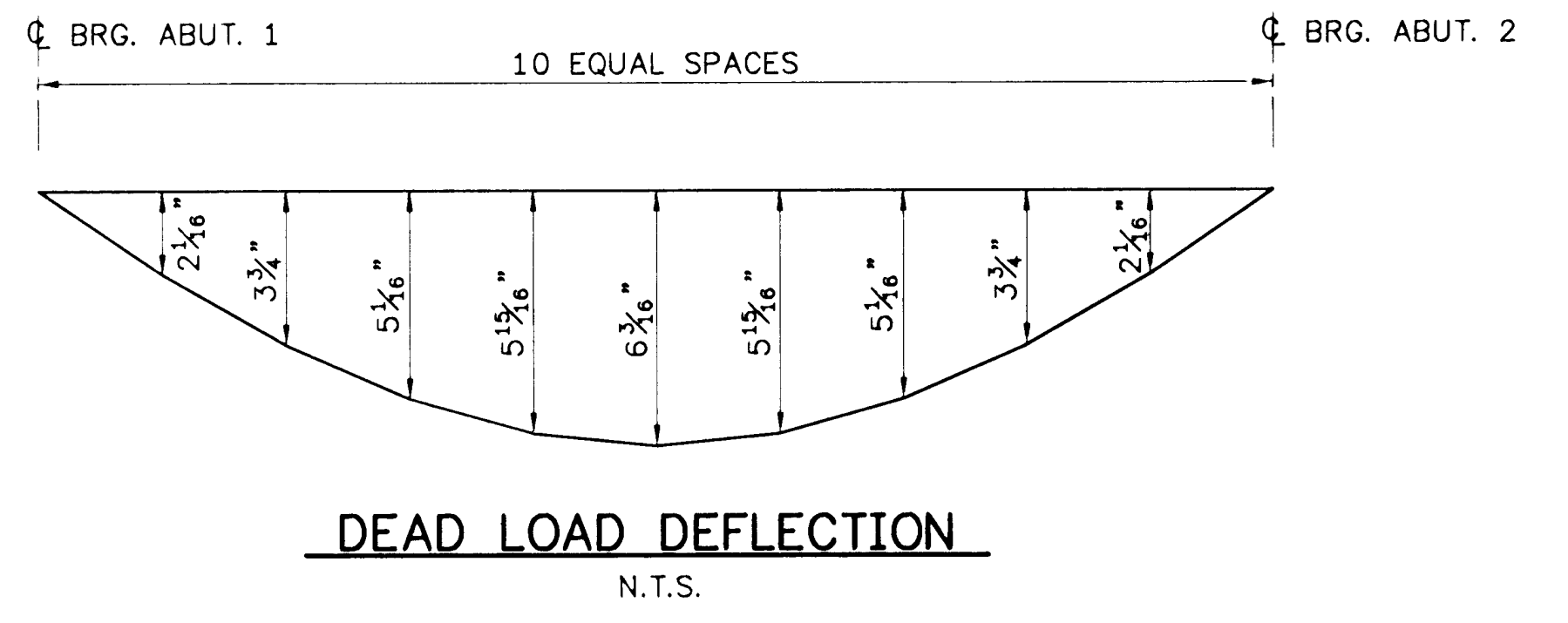
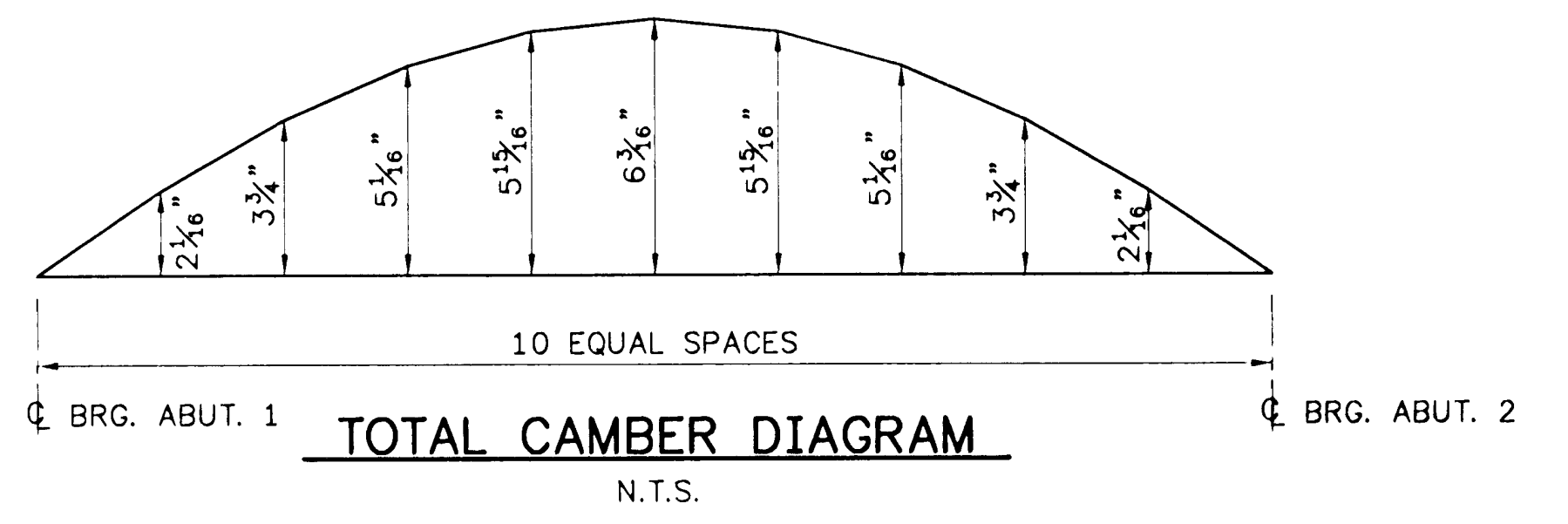
ABUT. NO. 2 (FIXED)



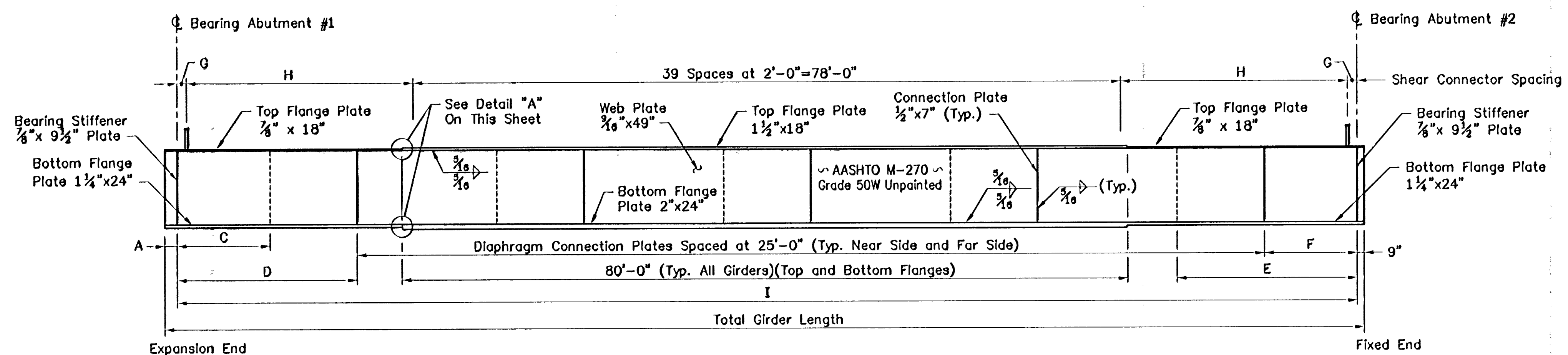
FLANGE TRIM DETAIL
 Scale: 3/4"=1'-0"



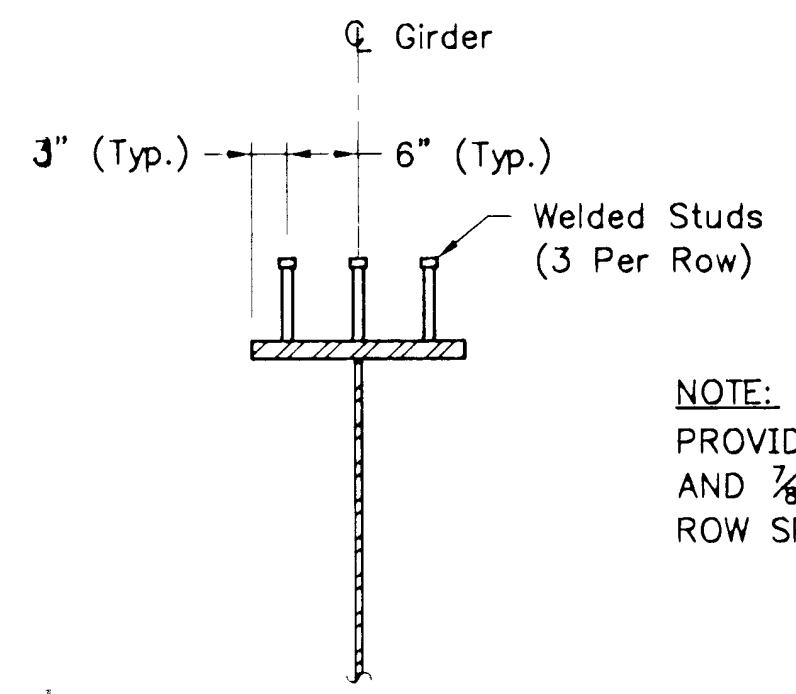
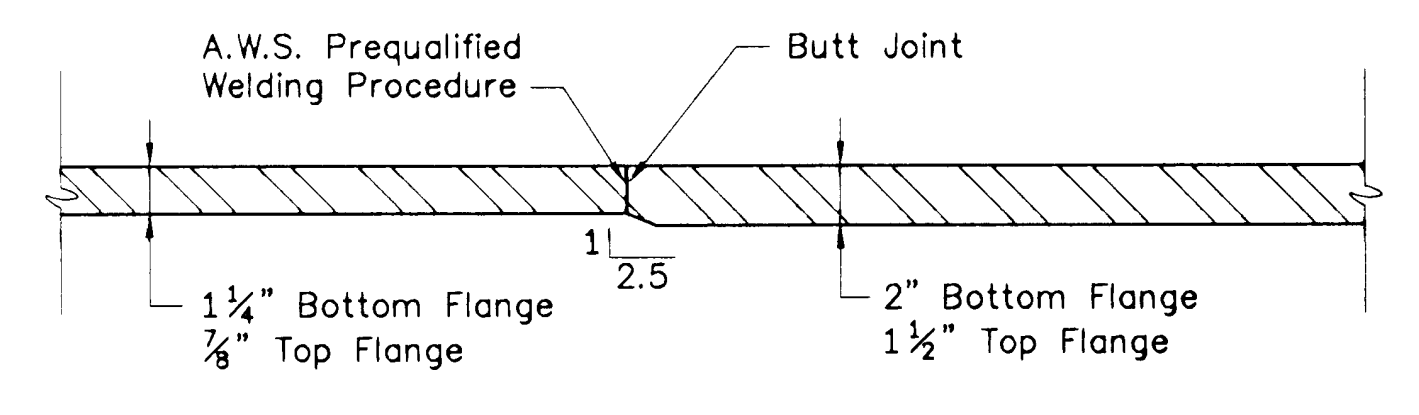
Scale: 3/4"=1'-0"



NOTE:
 EACH GIRDER SHALL BE CAMBERED A TOTAL OF 6 3/16".
 TOTAL DEAD LOAD DEFLECTION HAS BEEN CALCULATED TO BE 6 3/16".
 THE DESIGN RESIDUAL POSITIVE CAMBER FOR THIS PROJECT IS 0".



FABRICATION NOTE:
 AT THE CONTRACTOR'S OPTION, THE TOP AND/OR BOTTOM FLANGE TRANSITIONS MAY BE OMITTED, WITH THE THICKER PLATE EXTENDED TO GIRDER ENDS. IF THE CONTRACTOR SO OPTS, HE SHALL MAKE ALL NECESSARY MODIFICATIONS IN THE WORK, INCLUDING BUT NOT LIMITED TO BEARING SEAT ELEVATIONS, GIRDER CAMBER, BRIDGE SHOES, ETC. PAYMENT SHALL BE BASED ON GIRDER WEIGHT AS IF THE FLANGE TRANSITIONS WERE PROVIDED (I.E., NO INCREASE IN PAY WEIGHT).



NOTE:
 PROVIDE 3/8"x7" STUDS ON 1 1/2" TOP FLANGE AND 3/8"x8" STUDS ON 1" TOP FLANGE. ROW SPACING AS INDICATED ON GIRDER ELEVATION.

Note:
 Dimensions C, D, E and F Represent the Distance From Bearing to the First Diaphragm Connection Plate.

STATE OF VERMONT AGENCY OF TRANSPORTATION			
Town Of	BRAINTREE	Bridge No.	6
Highway No.	VT RTE 12A	Log Sta.	
VT RTE 12A OVER 3RD BRANCH OF THE WHITE RIVER		Surv. Sta.	
GIRDER ELEVATION & DETAILS			
Designed By	E.M. Stumph	Drawn By	M.J. Lamber
Checked By	Date	CLD Project Manager	
E.M. Stumph	1/95	C.R. Bean	Date 1/95
PROJECT		PROJECT NO.	
BRAINTREE		BRS 0187(6)	
I.G.C. Info.			
Bridge Sheet No. BR 108		Sheet 32 Of 79	

GIRDER LENGTH TABLE													
Girder Number	Dimension A	Dimension B	Dimension C	Dimension D	Dimension E	Dimension F	Dimension G	Shear Connector Spacing H	Dimension I	Dimension J	Dimension K	Dimension L	Total Girder Length
G1	1'-4 3/8"	11 1/2"	—	18'-5"	—	8'-10 11/16"	10 7/8"	19 sp at 1'-3"=23'-9"	127'-3 3/4"	6 3/8"	8 11/16"	4 7/8"	129'-4 11/16"
G2	1'-4 3/8"	11 3/4"	9'-6 13/16"	19'-1 3/8"	19'-1 1/4"	9'-6 5/8"	4 1/8"	20 sp at 1'-3"=25'-0"	128'-8 1/4"	6 3/8"	8 7/8"	4 1 1/16"	130'-9 9/16"
G3	1'-4 3/8"	11 13/16"	10'-2 1 3/16"	19'-10 3/16"	19'-9 1 1/16"	10'-2 5/8"	1'-0 1/2"	20 sp at 1'-3"=25'-0"	130'-0 1 1/16"	6 3/8"	9 1/16"	4 3/4"	132'-2 1/2"
G4	1'-4 3/8"	1'-0 1/8"	10'-11"	20'-7"	20'-6 1 1/16"	10'-10 1 1/16"	5 1 1/16"	21 sp at 1'-3"=26'-3"	131'-5 1 1/16"	8 3/8"	9 1/4"	4 1 1/16"	133'-7 7/8"
G5	1'-4 3/8"	1'-0 3/16"	11'-7 1/16"	—	21'-3 1/16"	—	1'-2 1/4"	21 sp at 1'-3"=26'-3"	132'-10 1/2"	6 3/8"	9 3/8"	4 1/16"	135'-0 7/16"



9222GDR.dwg (1-1)