

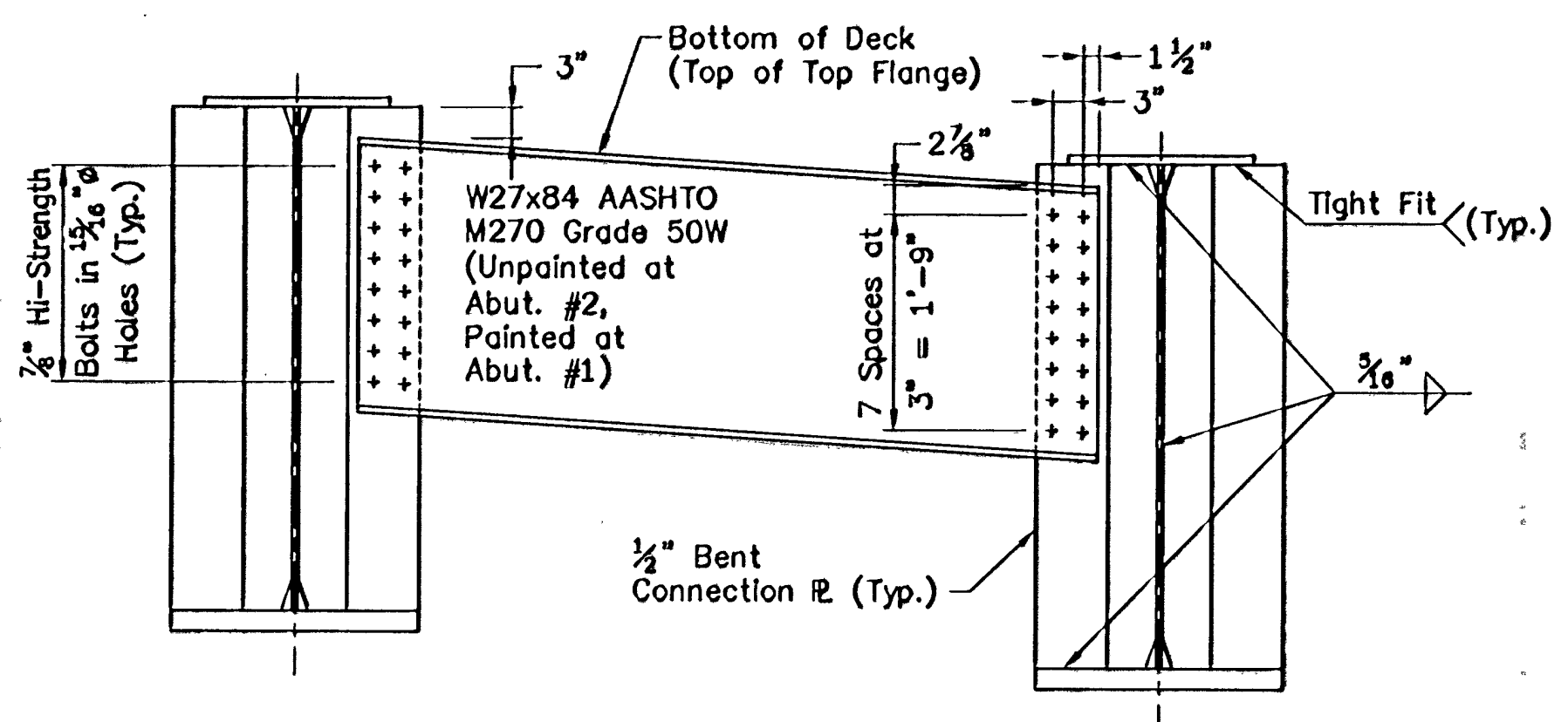
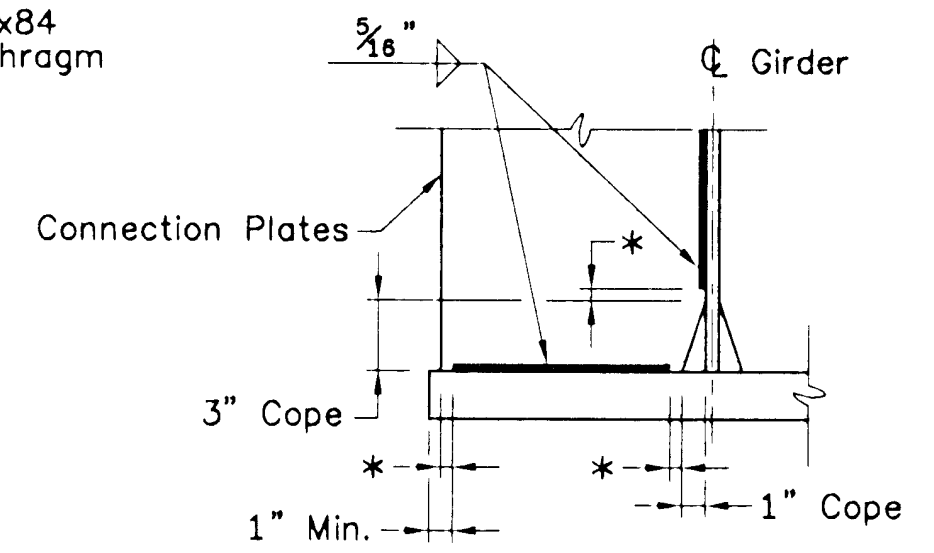
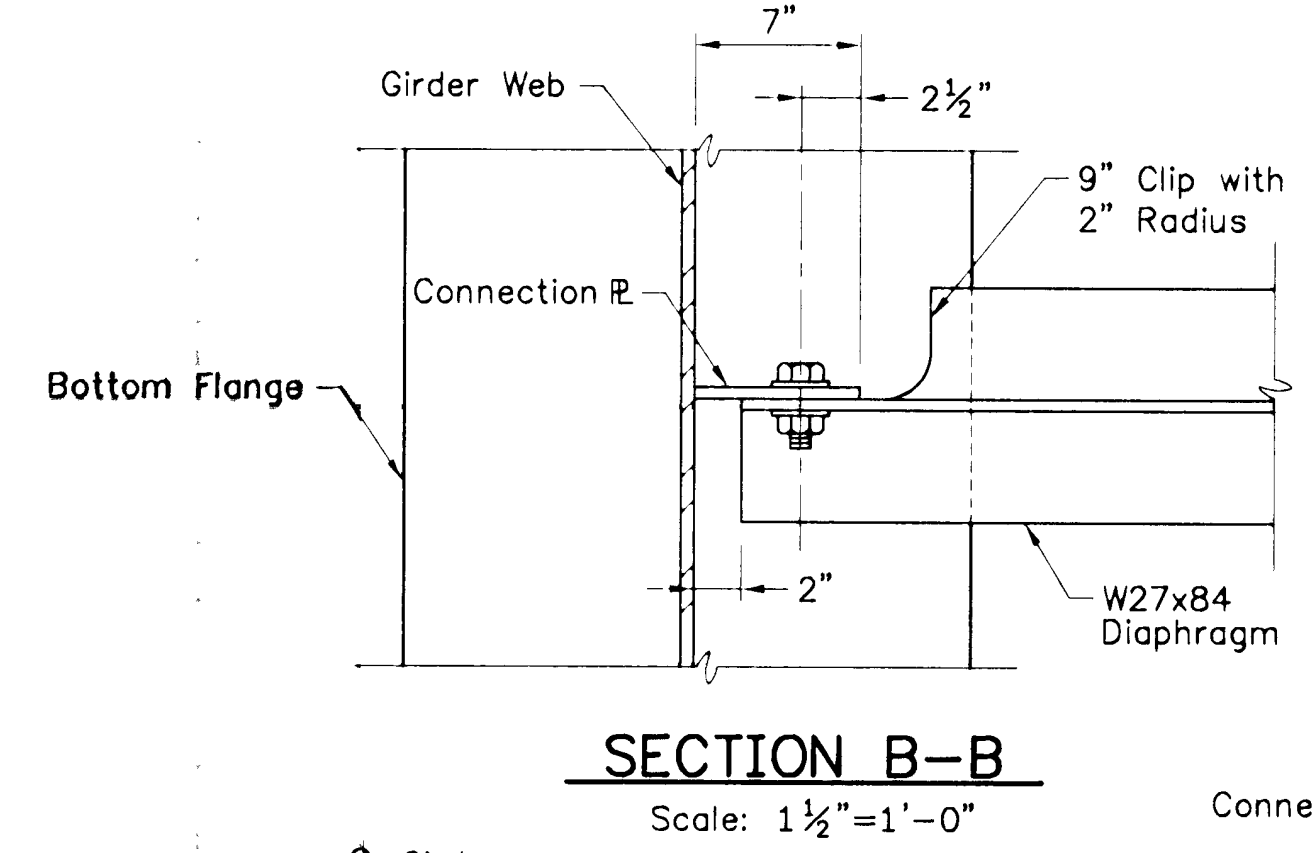
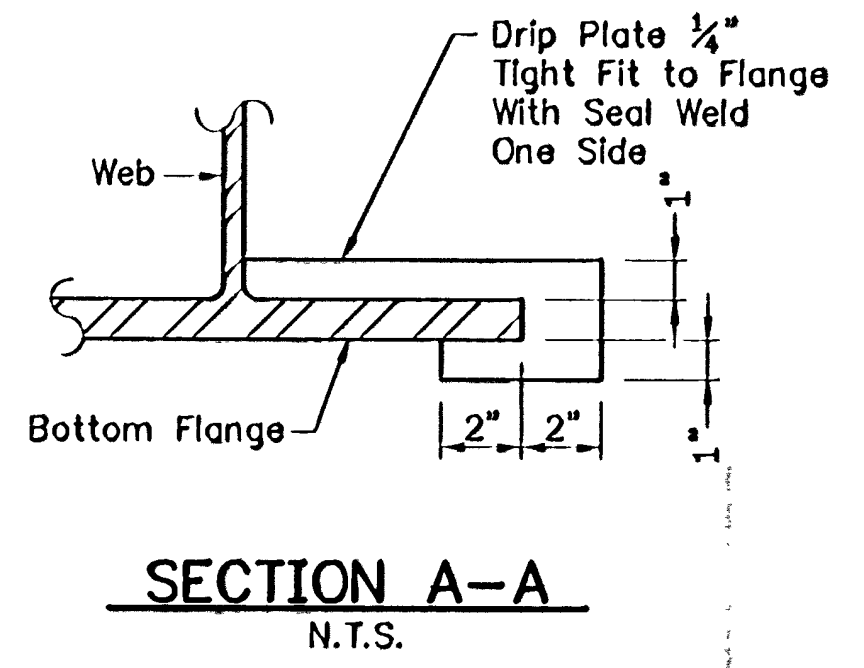
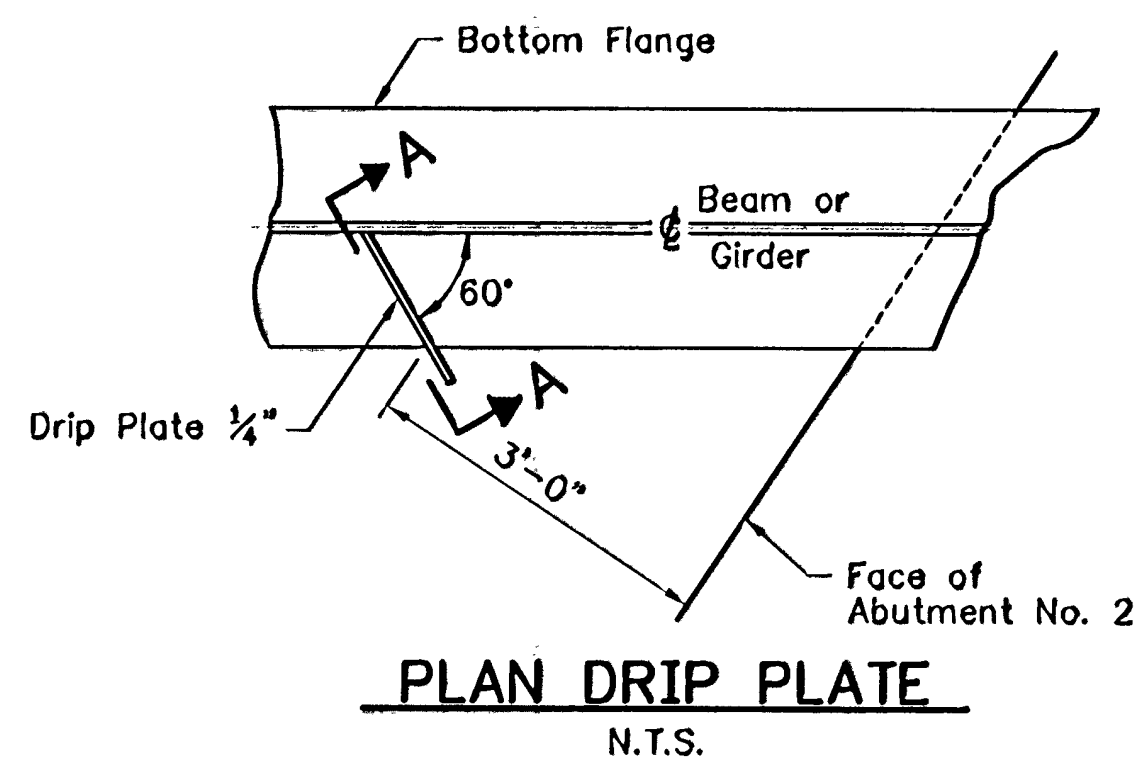
Revised \bar{C} Curve Data
 $\Delta = 26^{\circ}04'44''$
 $D = 4^{\circ}00'00''$
 $R = 1432.39'$
 $T = 331.73'$
 $L = 651.97'$
 $E = 37.91'$
 $BANK 0.063 \text{ ft./ft.}$

DIAPH. NO.	DISTANCE \bar{C} GR TO \bar{C} GR
1	6'-9 3/8"
2	6'-11 3/8"
3	7'-2"
4	7'-4 1/8"
5	7'-6 1/8"
6	6'-8 3/8"
7	6'-10 3/8"
8	7'-1 1/8"
9	7'-3 1/8"
10	7'-5 1/8"
11	6'-7 1/8"
12	6'-9 1/8"
13	7'-0 3/8"
14	7'-2 1/8"
15	7'-4 1/8"
16	6'-6 1/8"
17	6'-9 1/8"
18	6'-11 3/8"
19	7'-1 1/8"
20	7'-3 1/8"

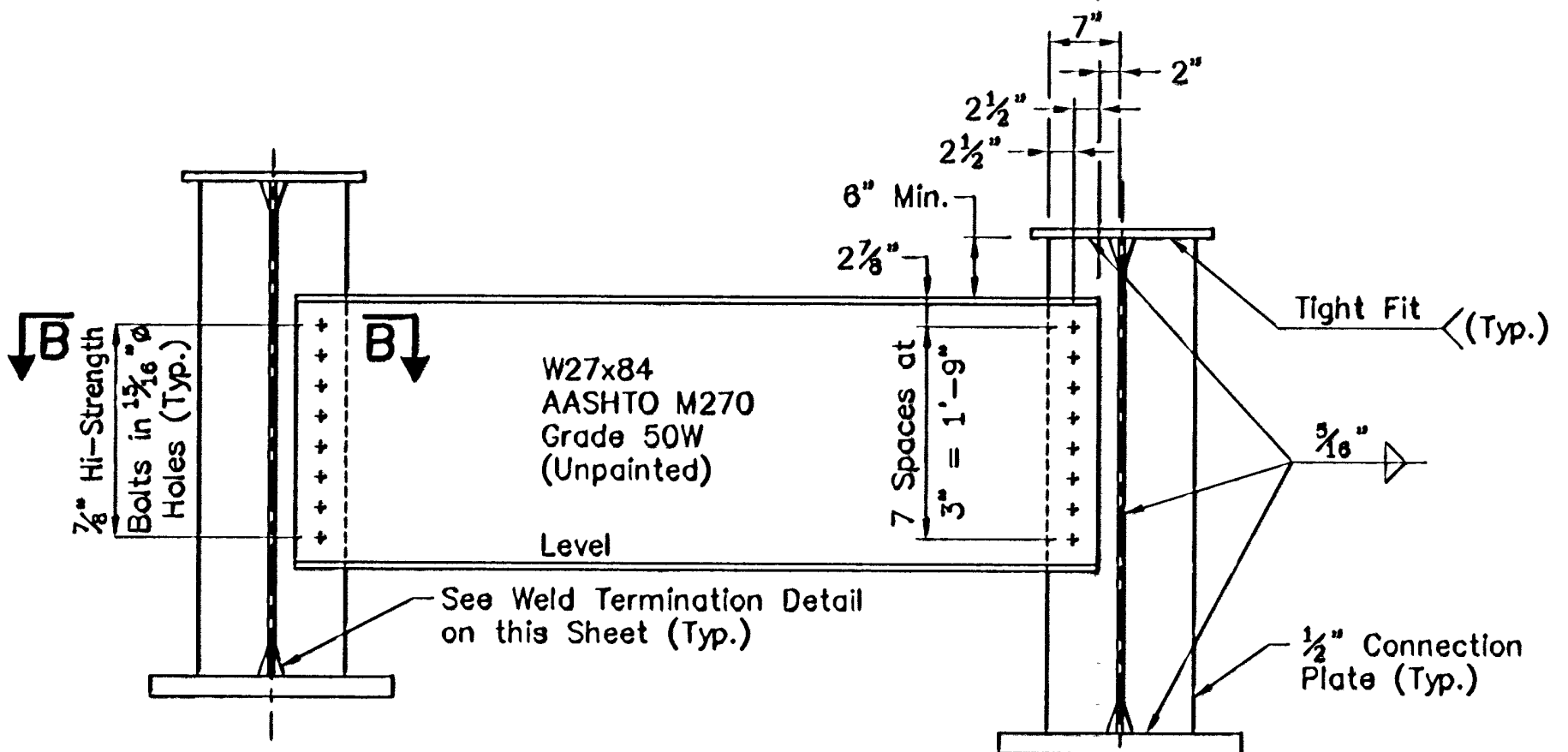
ANGLE TABLE	
A	90°-27'-48"
B	90°-27'-12"
C	90°-26'-38"
D	90°-28'-4"
E	36°-13'-56"
F	37°-08'-34"
G	38°-38'-47"
H	36°-11'-34"
I	35°-44'-57"
J	35°-18'-52"

* NOTE: Refer to Girder Length Table, Sheet BR 108, For Locations of Diaphragm Connection Plates.

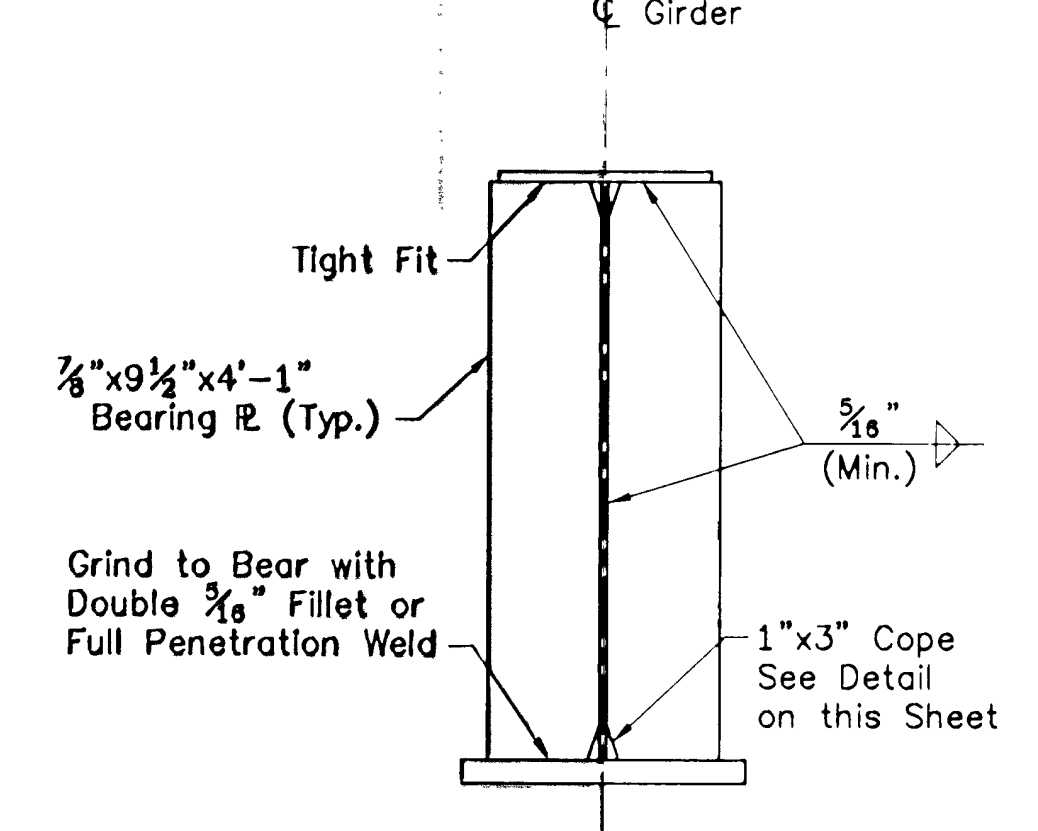
FRAMING PLAN
 Scale: 3/16"=1'-0"



The Ends of the W27x84 Diaphragms at Each Abutment are to be Cut to be Vertical in the Erected Position.



Note: HI-Strength Bolts, Nuts and Washers Shall Conform to AASHTO Designation M164.



STATE OF VERMONT AGENCY OF TRANSPORTATION			
Town Of	BRAINTREE	Bridge No.	6
Highway No.	VT RTE 12A	Log Sta.	
		Surv. Sta.	
VT RTE 12A OVER 3RD BRANCH OF THE WHITE RIVER			
FRAMING PLAN			
Designed By	E.M.Stumph	Drawn By	M.J.Lamper
Checked By	Date	CLD Project Manager	
E.M.Stumph	1/95	C.R.Bean	Date 1/95
PROJECT BRAINTREE		PROJECT NO. BRS 0187(6)	
I.G.C. Info.			
Bridge Sheet No.	BR 107	Sheet	31 Of 79



90282FRA.dwg (1=1) (plot)