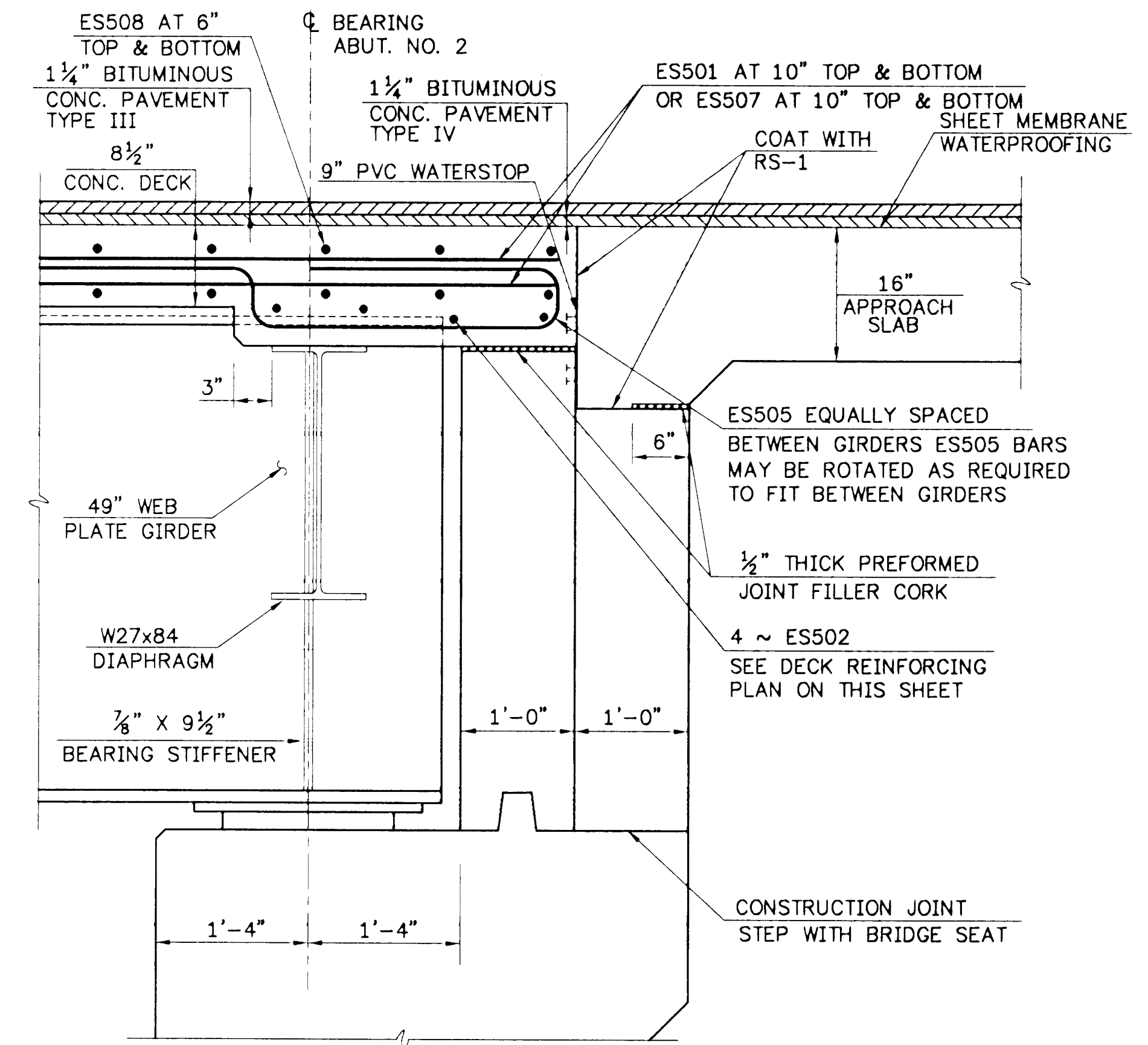
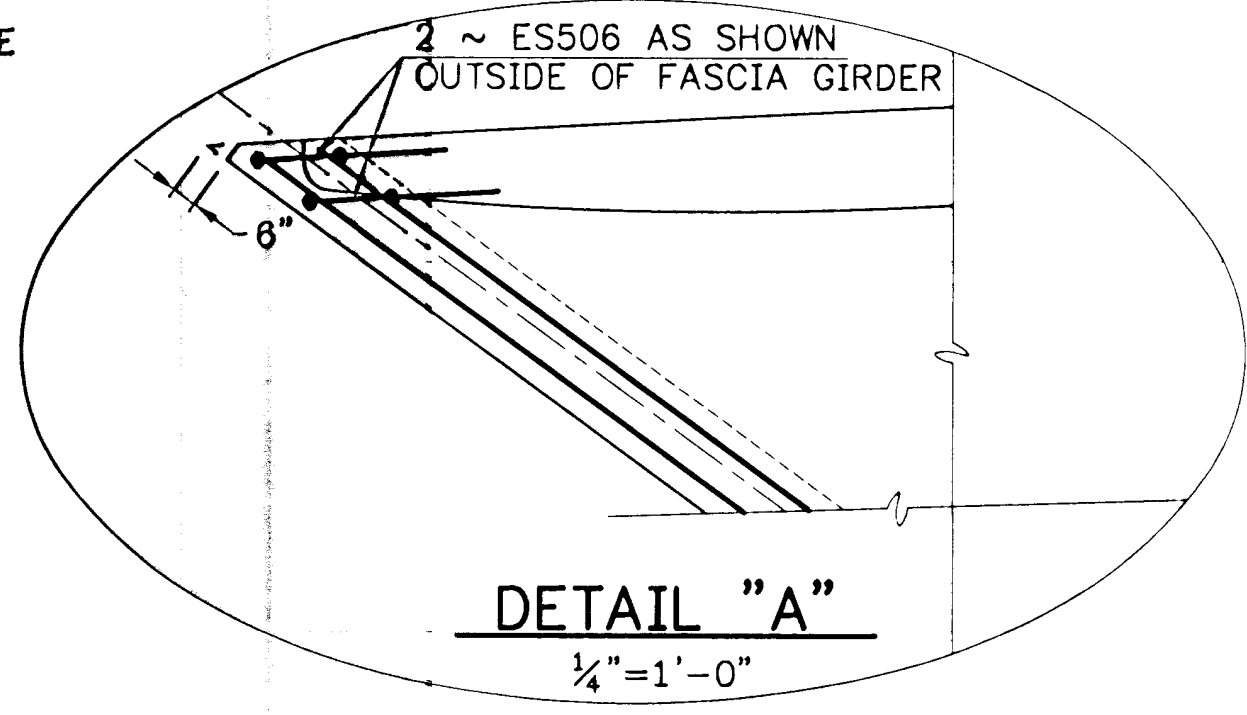


DECK REINFORCING PLAN
SCALE: 1/8"=1'-0"

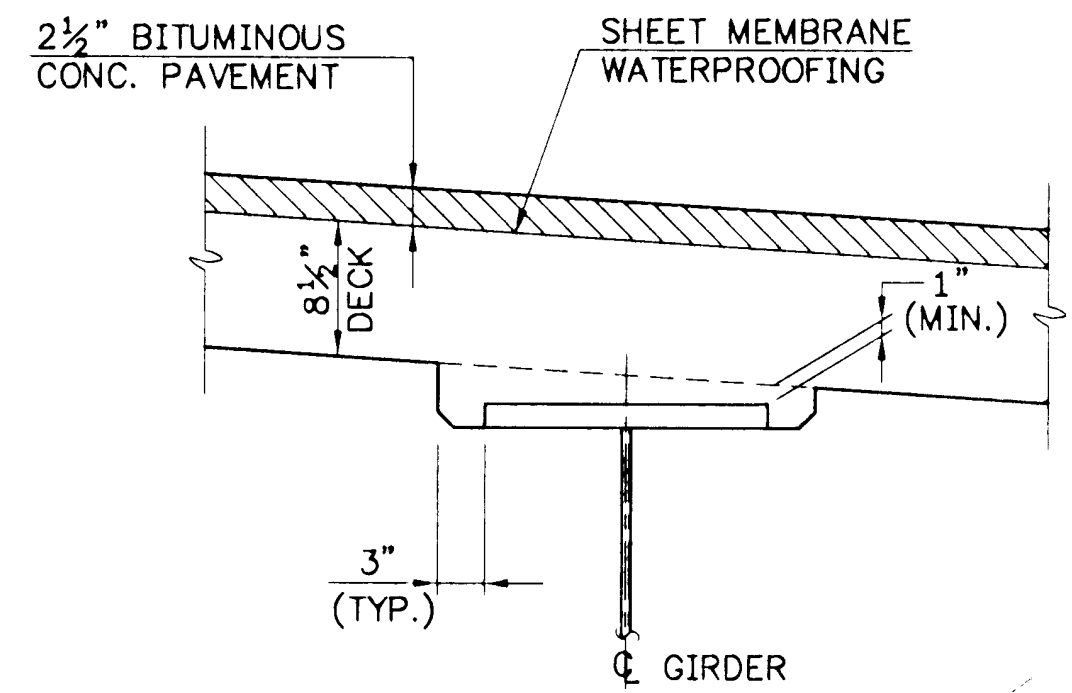
- NOTES:**
1. ALL REINFORCING STEEL IN DECK, CURBS AND APPROACH SLABS SHALL BE EPOXY COATED.
 2. ALL EPOXY COATED STEEL TO BE CUT IN THE FIELD SHALL BE SAW CUT AND THE EXPOSED END SHALL BE TREATED AS PER SUBSECTION 507.04.
 3. THE 6" SPACING FOR ES508 BARS IS MEASURED ALONG ϕ ROADWAY. EXTRA ES508 BARS ARE INCLUDED IN THE REINFORCING STEEL SCHEDULES TO ASSURE ADEQUATE AVAILABLE LENGTH DUE TO DIFFERENT SKEW ANGLES OF EACH END.



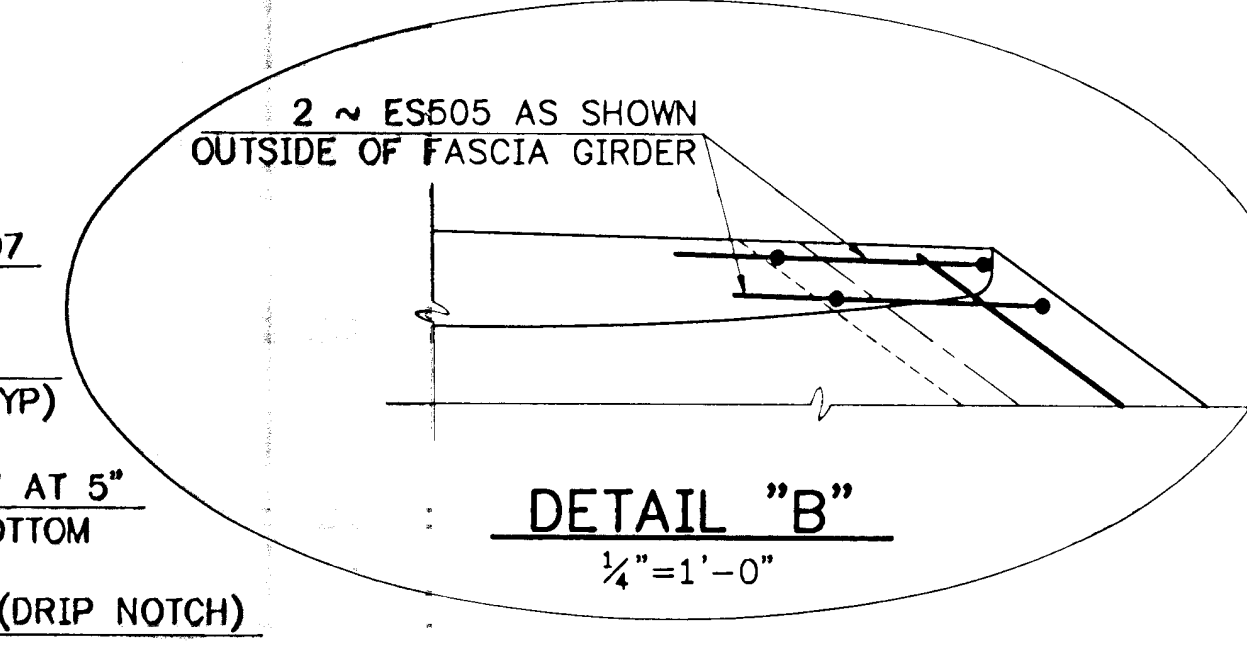
END DETAIL AT ABUTMENT NO. 2
(NORMAL TO ϕ BEARING)
SCALE: 1"=1'-0"



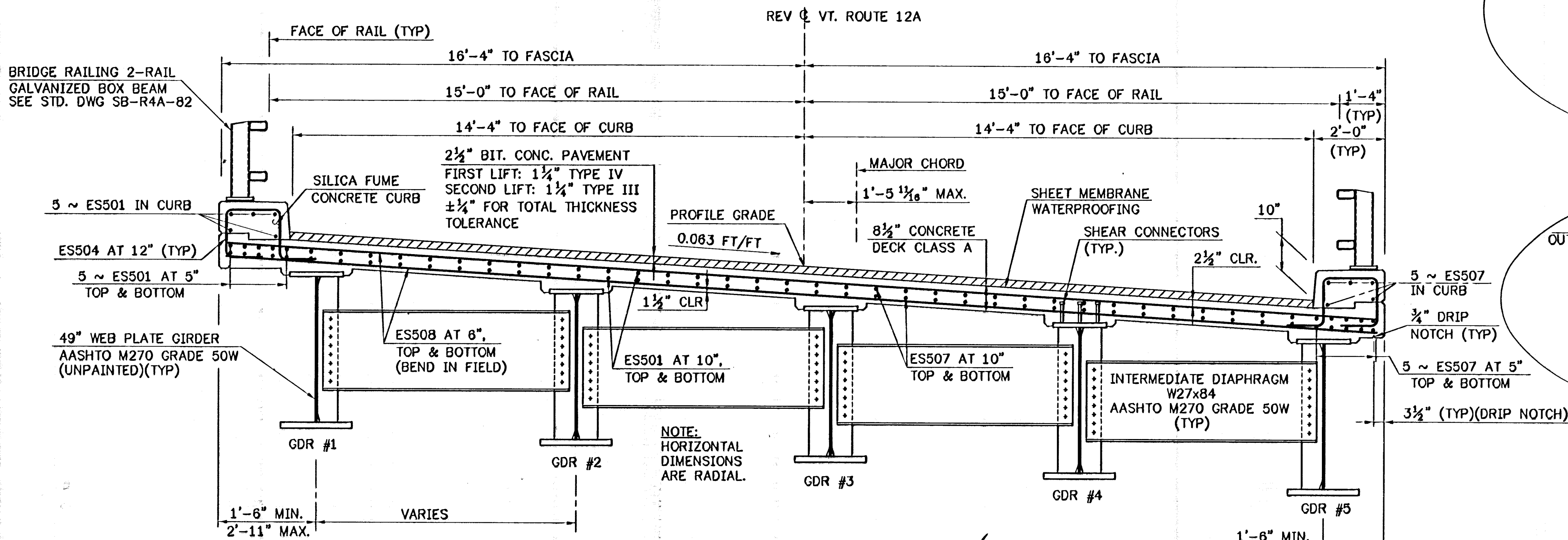
DETAIL "A"
1/4"=1'-0"



GIRDER HAUNCH DETAIL
SCALE: 1"=1'-0"



DETAIL "B"
1/4"=1'-0"



BRIDGE TYPICAL SECTION
SCALE: 1/2"=1'-0"

STATE OF VERMONT AGENCY OF TRANSPORTATION		
Town Of	BRAINTREE	Bridge No. 6
Highway No.	VT RTE 12A	Log Sta.
		Surv. Sta.
VT RTE 12A OVER 3RD BRANCH OF THE WHITE RIVER		
DECK DETAILS		
Designed By	E.M.Stumph	Drawn By. A.Setas
Checked By	Date	CLD Project Manager
E.M.Stumph	1/95	C.R.BEAN Date 1/95
PROJECT	BRAINTREE	PROJECT NO. BRS 0187(6)
I.G.C. Info.		
Bridge Sheet No.	BR 105	Sheet 29 Of 79



90285DEK.dwg (1=1)(PLOT)