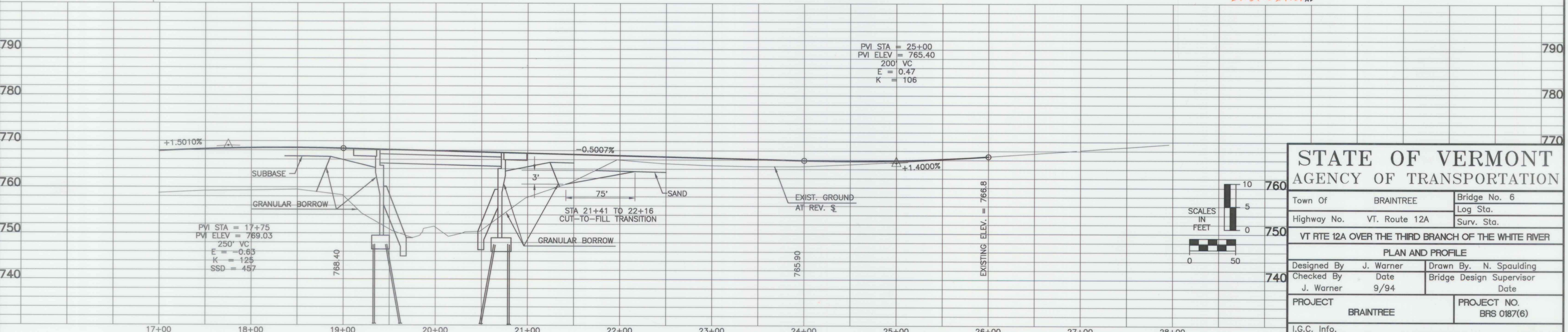
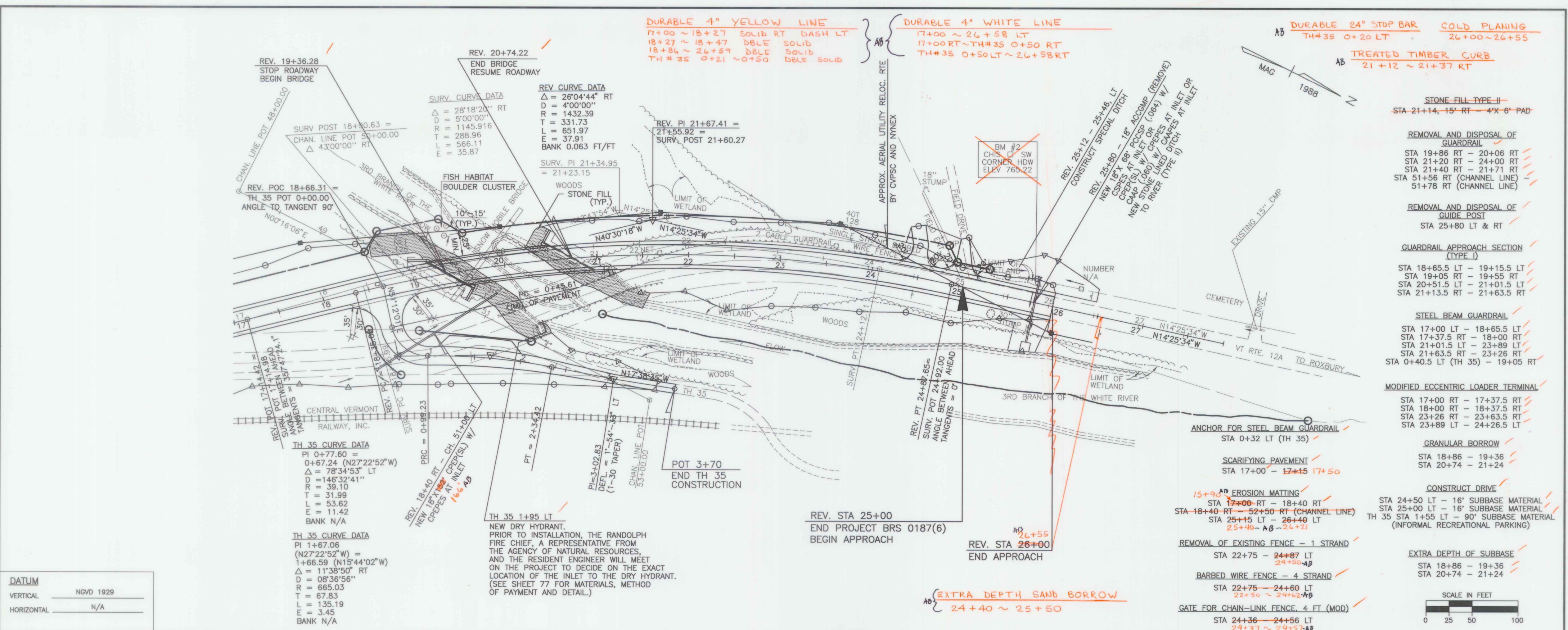


DATE	
BY	
REVISION	
NO.	
DESCRIPTION	
DATE	
BY	
REVISION	
NO.	
DESCRIPTION	
DATE	
BY	
REVISION	
NO.	
DESCRIPTION	

DATE	
BY	
REVISION	
NO.	
DESCRIPTION	
DATE	
BY	
REVISION	
NO.	
DESCRIPTION	
DATE	
BY	
REVISION	
NO.	
DESCRIPTION	



- STONE FILL TYPE II
- STA 21+14 - 15' RT - 4'x6' PAD
- REMOVAL AND DISPOSAL OF GUARDRAIL
- STA 19+86 RT - 20+06 RT
- STA 21+20 RT - 24+00 RT
- STA 21+40 RT - 21+71 RT
- STA 51+56 RT (CHANNEL LINE)
- 51+78 RT (CHANNEL LINE)
- REMOVAL AND DISPOSAL OF GUIDE POST
- STA 25+80 LT & RT
- GUARDRAIL APPROACH SECTION (TYPE I)
- STA 18+65.5 LT - 19+15.5 LT
- STA 19+05 RT - 19+55 RT
- STA 20+51.5 LT - 21+01.5 LT
- STA 21+13.5 RT - 21+63.5 RT
- STEEL BEAM GUARDRAIL
- STA 17+00 LT - 18+65.5 LT
- STA 17+37.5 RT - 18+00 RT
- STA 21+01.5 LT - 23+89 LT
- STA 21+63.5 RT - 23+26 RT
- STA 0+40.5 LT (TH 35) - 19+05 RT
- MODIFIED ECCENTRIC LOADER TERMINAL
- STA 17+00 RT - 17+37.5 RT
- STA 18+00 RT - 18+37.5 RT
- STA 23+26 RT - 23+83.5 RT
- STA 23+89 LT - 24+26.5 LT
- GRANULAR BORROW
- STA 18+86 - 19+36
- STA 20+74 - 21+24
- CONSTRUCT DRIVE
- STA 24+50 LT - 16' SUBBASE MATERIAL
- STA 25+00 LT - 16' SUBBASE MATERIAL
- TH 35 STA 1+55 LT - 80' SUBBASE MATERIAL (INFORMAL RECREATIONAL PARKING)
- EXTRA DEPTH OF SUBBASE
- STA 18+86 - 19+36
- STA 20+74 - 21+24

STATE OF VERMONT
AGENCY OF TRANSPORTATION

Town Of	BRAINTREE	Bridge No.	6
Highway No.	VT. Route 12A	Log Sta.	
		Surv. Sta.	
VT RTE 12A OVER THE THIRD BRANCH OF THE WHITE RIVER			
PLAN AND PROFILE			
Designed By	J. Warner	Drawn By	N. Spaulding
Checked By	Date	Bridge Design Supervisor	Date
J. Warner	9/94		
PROJECT	BRAINTREE	PROJECT NO.	BRS 0187(6)
I.G.C. Info.			
Bridge Sheet No.		Sheet	17 Of 79