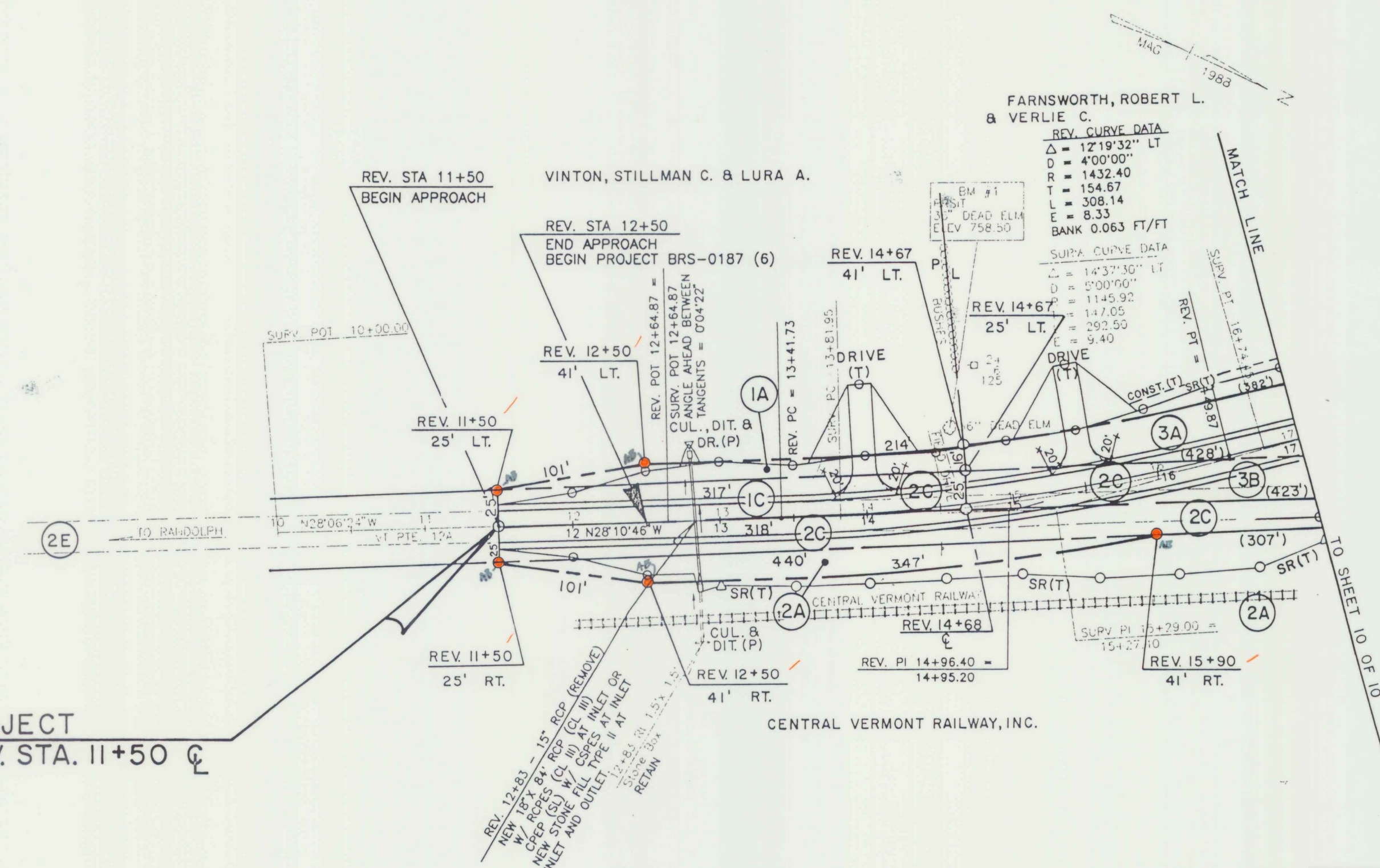


PLAN	DESIGNED	DATE
	DRAWN	
	CHECKED	
	NOTED	
	BY	

PROFILE	DESIGNED	DATE
	DRAWN	
	CHECKED	
	NOTED	
	BY	

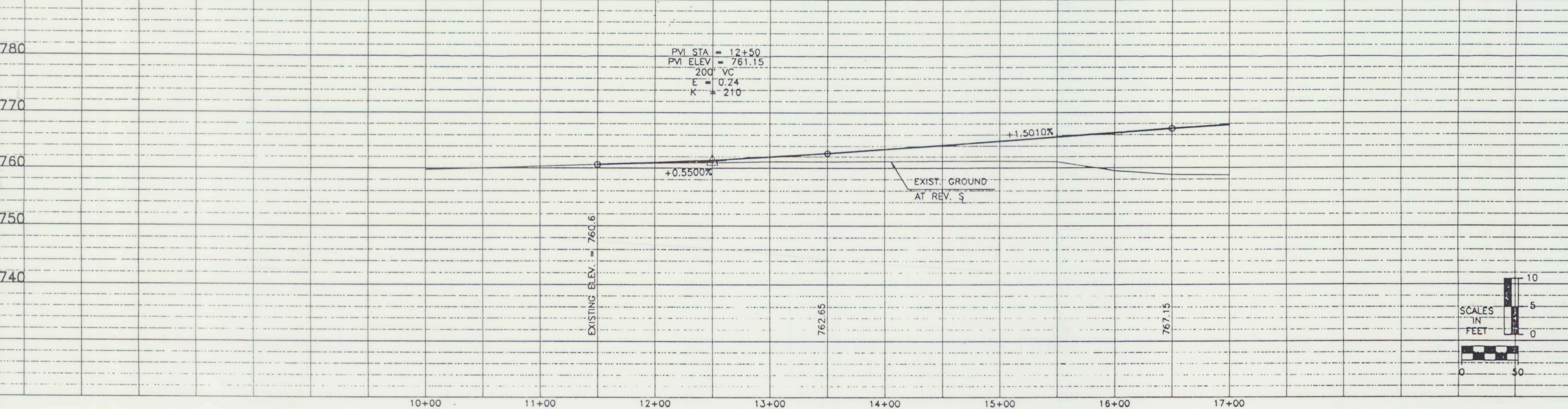
BEGIN R.O.W. PROJECT  
BRS 0187(6) REV. STA. 11+50 CL

DATUM  
VERTICAL NOV 1929  
HORIZONTAL N/A



- REMOVAL AND DISPOSAL OF GUIDE POSTS  
STA 12+83, LT & RT
- BREAKAWAY CABLE TERMINALS  
STA 16+12 LT - 16+37 LT  
STA 17+00 RT - 17+25 RT
- STEEL BEAM GUARD RAIL  
STA 16+37 LT - 18+50 LT
- CONSTRUCT DRIVE  
STA 14+00 LT - 16'w GRAVEL  
STA 15+50 LT - 16'w GRAVEL
- SCARIFY PAVEMENT  
STA 15+00 - 17+15

12-05-94 REVISION 3  
02-10-94 REVISION 1



**THIS SHEET FOR ROW USE ONLY**

STATE OF VERMONT  
AGENCY OF TRANSPORTATION

Town Of	BRANTREE	Bridge No.	6
Highway No.	Vt. Route 12A	Log Sta.	
		Surv. Sta.	
VT RTE 12A OVER THE THIRD BRANCH OF THE WHITE RIVER			
PLAN AND ELEVATION			
Designed By	J. Warner	Drawn By	N. Spaulding
Checked By	Date	Bridge Design Supervisor	Date
BRANTREE BRS 0187(6) R.O.W. SHEET 9 OF 10 SHEETS			