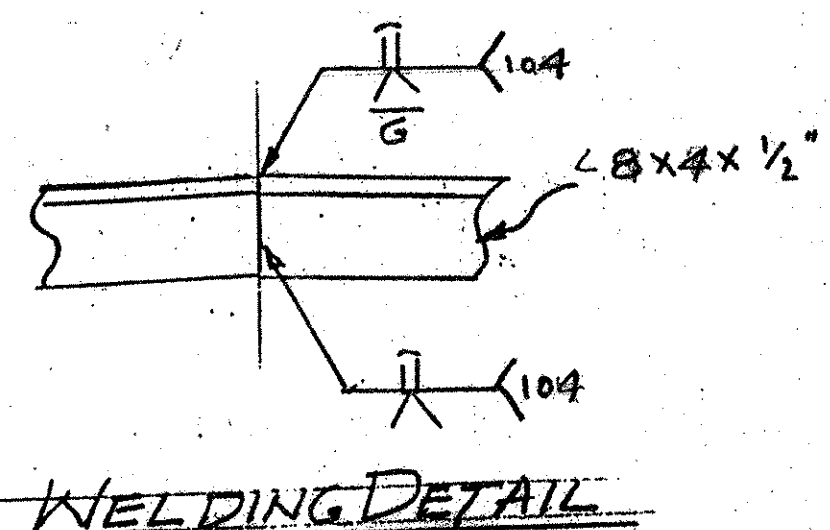
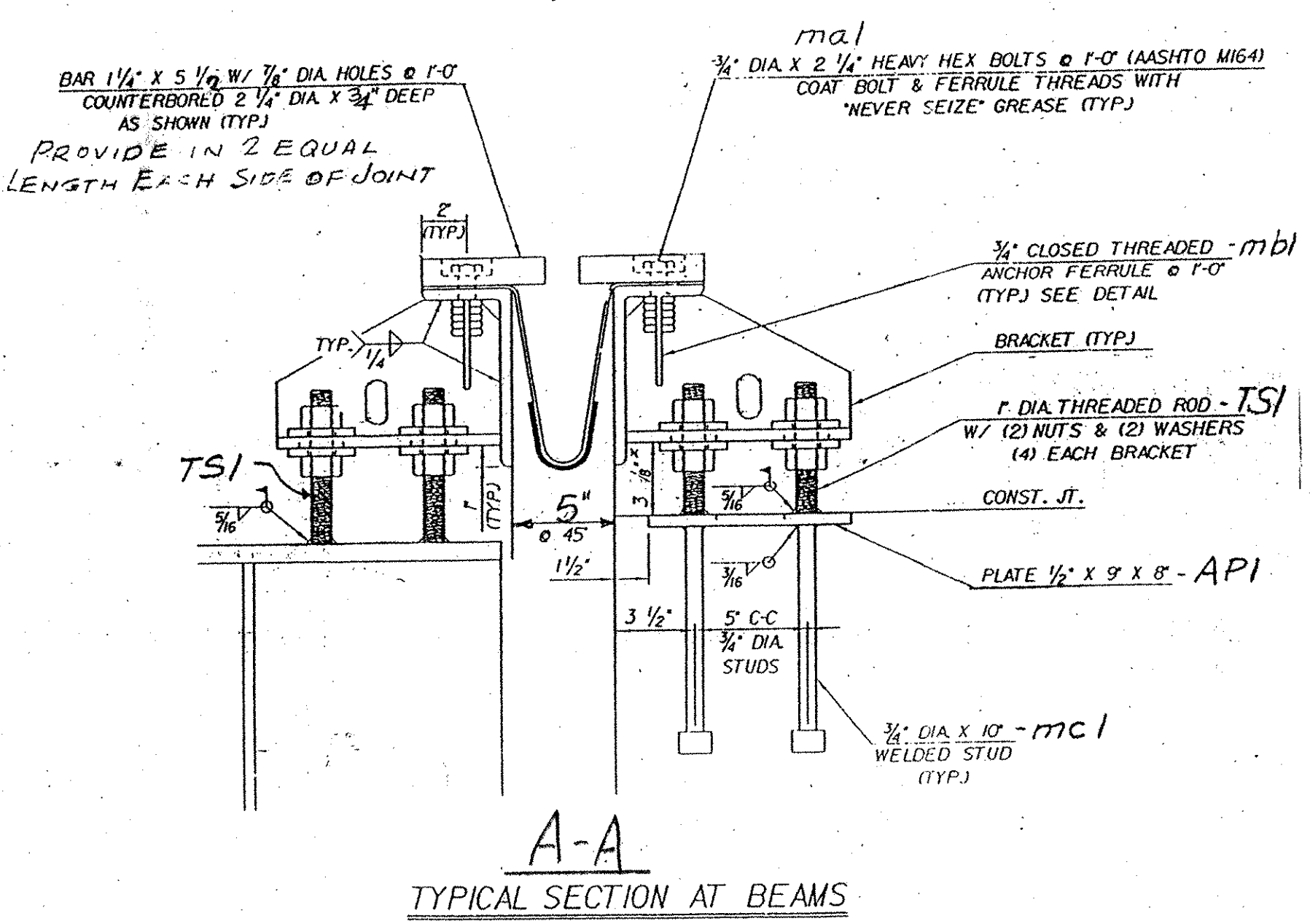


EJ1-ONE REQ'D (C ABUT. 1)

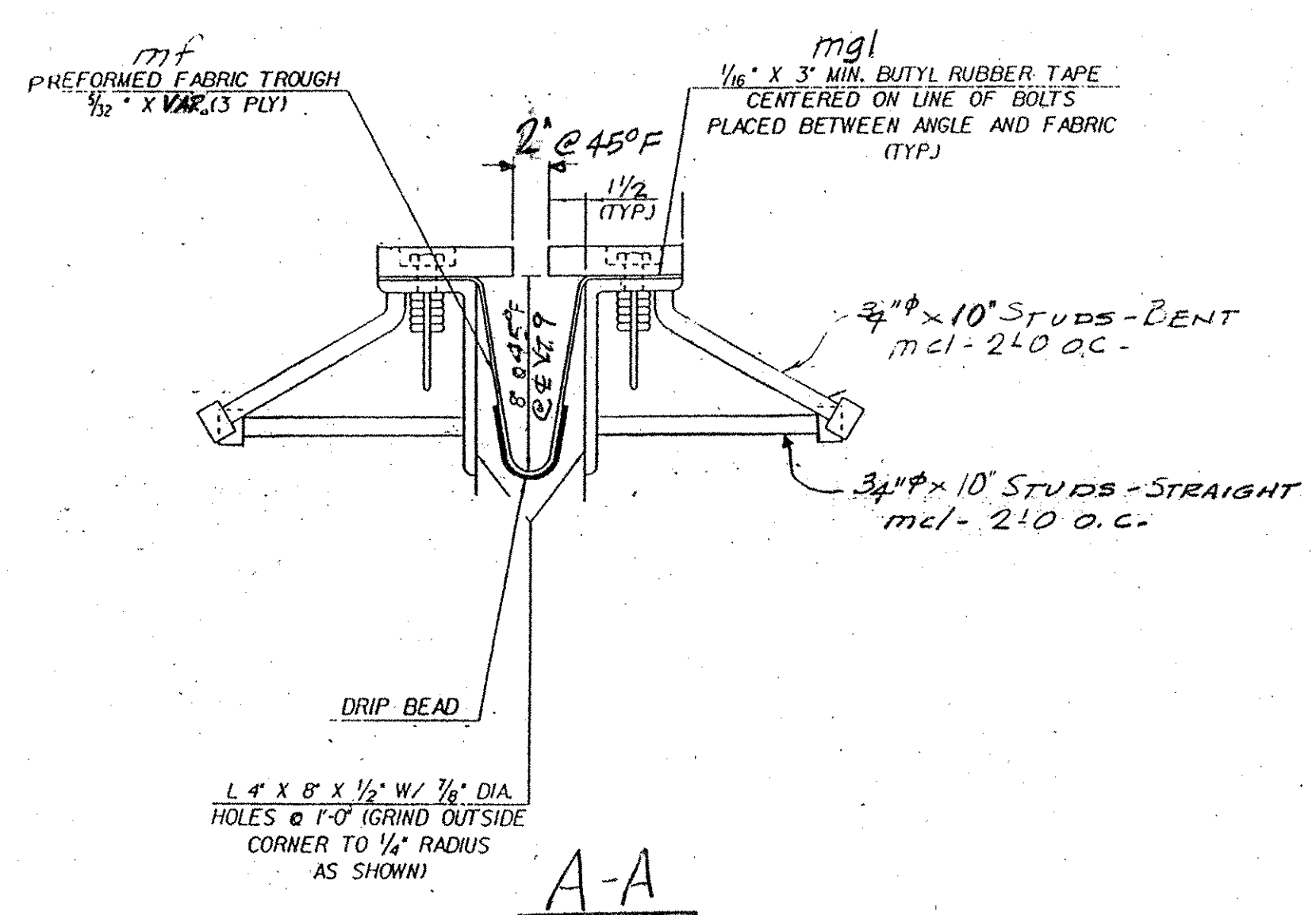


WORK THIS DWG. W/ DWG. J2

note: prior to galvanizing, all corners and edges of steel plates, shapes, etc shall be ground to a 1/16\"/>



TYPICAL SECTION AT BEAMS



TYPICAL SECTION BETWEEN BEAMS

RECEIVED
OCT 11 2006
APPROVED Mem
DATE 10/12/06

AEM INFO		SHOP BILL				JOB NO. 290	DRG. NO. J1		
PAGE	LINE	NO.	DESCRIPTION	FT	IN	ASSEM. MARK	SHIPPING MARK	REMARKS	WEIGHT
	1		EXP. INT. ASSY	67	0		EJ1		
	2		L 8x4x1/2	16	0	aa1 1/2			
	2		DO	16	11	bb1 1/2			
	2		DO	16	11	cc1 1/2			
	2		DO	17	0	dd1 1/2			
	2		BAR 5 1/2 x 1/4	16	0	ee1 1/2			
	2		DO	16	11	ff1 1/2			
	2		DO	16	11	gg1 1/2			
	2		DO	17	0	hh1 1/2			
	12		BAR 8 x 1/2	10					
	12		BAR 6 x 1/2	10					
	130		3\"/>						

OUT FOR APPROVAL	8-8-06										
OUT FOR APPROVAL	7-11-06										
ISSUED TO SHOP											
FIELD & OFFICE											
REV.	REMARKS	DATE	DNW	CHK	APP	Q.A.	NO.	DIA.	LGT	TYPE	WASHER
	PROJECT NO. BHF-010-1 (29)										STATE PROJECT NO. BR 11
	MATERIAL: AASHTO M270 GALV. 3\"/>										
	SURFACE PREP. & PAINT: GALVANIZED AFTER FAB (ASTM-A123)										
	DESCRIPTION: EXP. INT. - ABUT. 1										DRAWN BY: JPF
	JOB: VT. 9 OVER ROARING BRANCH OF WA. LOOMSAC RIV. WOLFORD, VT.										DATE: 7-06
											CHKD BY: EJ1
											APPROV BY: Q.A.
	CUSTOMER: RENEAD BROS.										
	CASCO BAY STEEL STRUCTURES, INC.										JOB NO. 290
	75 SPRING HILL ROAD SAGO, MAINE 04072										DRG. NO. J1
	PHONE (207) 282-7360 FAX (207) 282-1179										REV. Δ