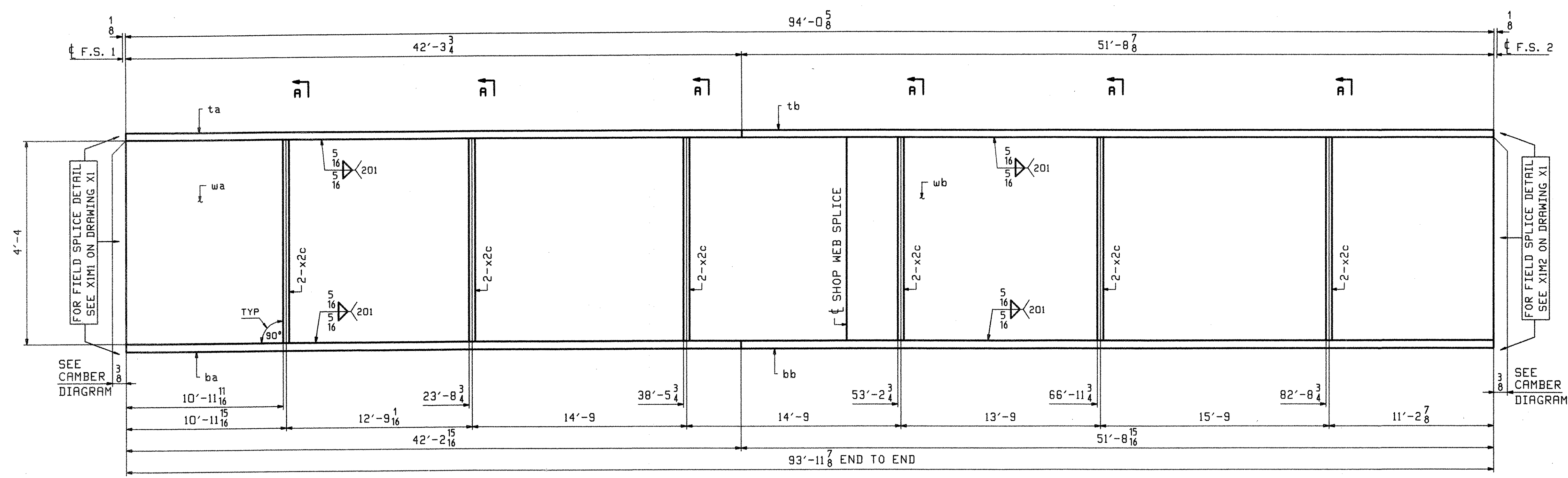


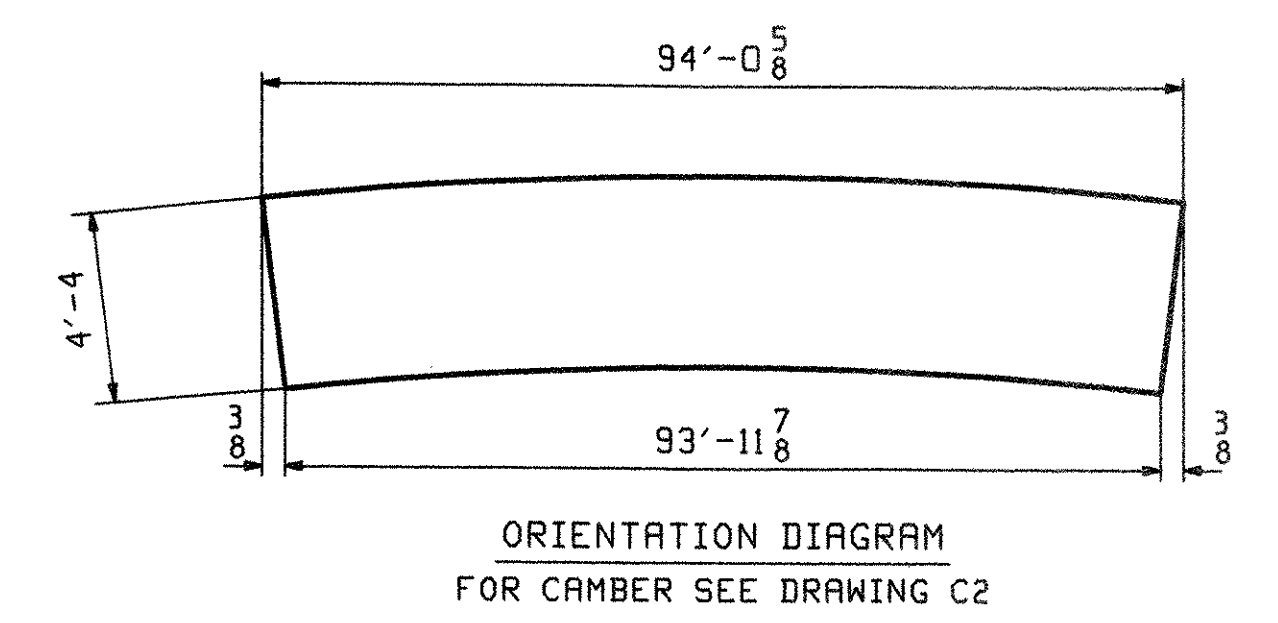
ABM INFO		BILL OF MATERIAL				JOB NO.	DRAWING NO.	REV.	
PAGE	LINE	MARK	QTY	MARK	MATERIAL	LENGTH	REMARKS	WT	PROCUREMENT NOTES
						FT INCHES			
		9G3B	1		GIRDER			17943	
1	L		1	wa	PL 1/2x52	49 6 1/4	(M270-SOWT2) (H2-3)		
1	N		1	wb	PL 1/2x52	44 6 3/8	(M270-SOWT2) (H2-3)		
1	G		1	ta	PL 7/8x16	42 3 3/4	(M270-SOWT2) (H2-3)		
1	E		1	tb	PL 7/8x16	51 8 5/8	(M270-SOWT2) (H2-3)		
1	G		1	ba	PL 7/8x16	42 2 15/16	(M270-SOWT2) (H2-3)		
1	E		1	bb	PL 7/8x16	51 8 5/8	(M270-SOWT2) (H2-3)		
2	J		12	x2c	PL 1/2x7 1/2	4 4			



FOR FIELD SPLICE DETAIL SEE XIM2 ON DRAWING X1

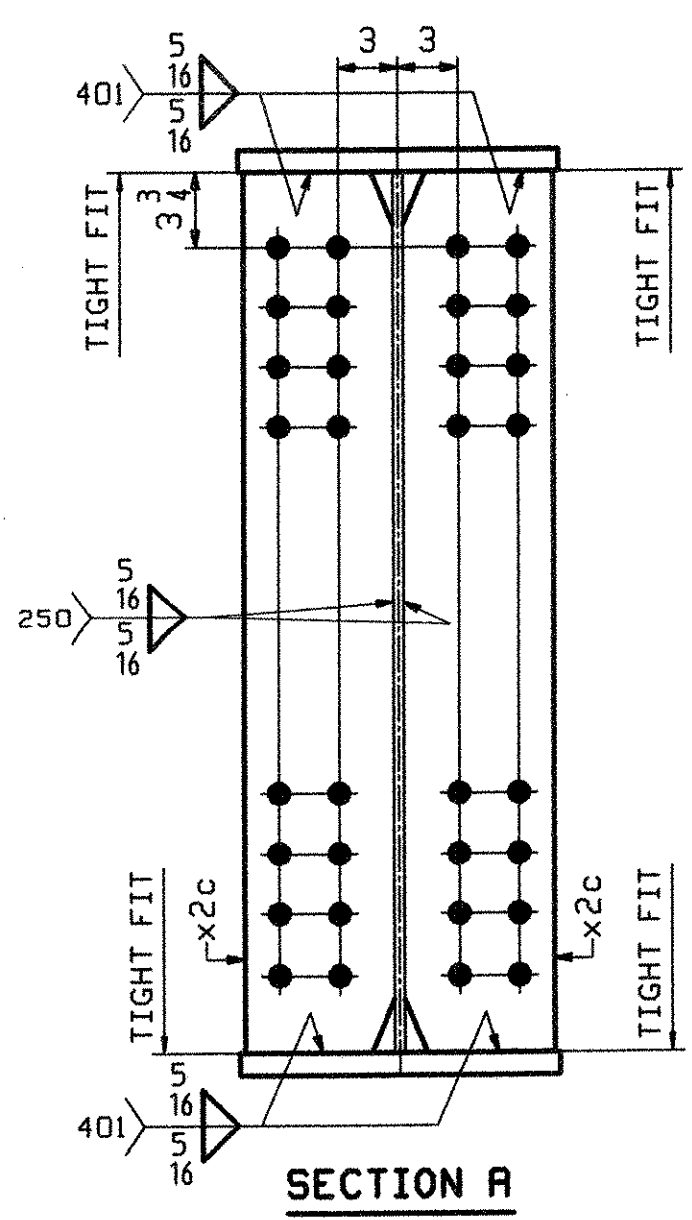
SEE CAMBER DIAGRAM

SEE CAMBER DIAGRAM



ONE - GIRDER - 9G3B

FOR FIELD SPLICE DETAILS SEE DRAWING X1.
 FOR GIRDER STANDARD DETAILS SEE DRAWING X2.
 FOR CAMBER & FLANGE DIAGRAMS SEE DRAWING C2.
 FOR GENERAL NOTES SEE DRAWING GNI.
 H2-3 DENOTES MATERIAL SUBJECT TO CHARPY V-NOTCH TESTING.



RECEIVED
 CK'D BY: [Signature]
 JUL 26 2006
 RESUBMIT APPROVED
 BY: [Signature] DATE 7/28/06

OUT FOR APPROVAL	Final 7/17/06											
OUT FOR APPROVAL												
ISSUED TO SHOP												
FIELD & OFFICE												
REV.	REMARKS	DATE	DWN	CHK	APP	Q.A.	NO.	DIA.	LGT	TYPE	WASHER	
	MATERIAL:	ELECTRODES:		HOLES:		SHOP BOLTS:		NONE				
	M270-SOW (UN)			15/16 Ø								
SURFACE PREP. & PAINT:												
SEE DRAWING GNI												
DESCRIPTION: GIRDER - 9G3B										DRAWN BY		DATE
JOB: RTE 9 OVER ROARING BRANCH OF WALLOOHSAC RIVER										JTB		02/22
BRIDGE No. BR 11										CHKD BY		
WOODFORD, VT. BENNINGTON COUNTY										PCP		03/06
TENSOR 2608										APPROV BY		
PROJ NO. BHF 010-1(29)										SUPERVISOR		W. J. GATTI
CUSTOMER: RENAUD BROTHERS, INC.										Q.A.		
CASCO BAY STEEL STRUCTURES, INC.										JOB NO.		290
75 SPRING HILL ROAD SACO, MAINE 04072										DRG. NO.		9
PHONE (207) 282-7360 FAX. (207) 282-1179										REV.		△