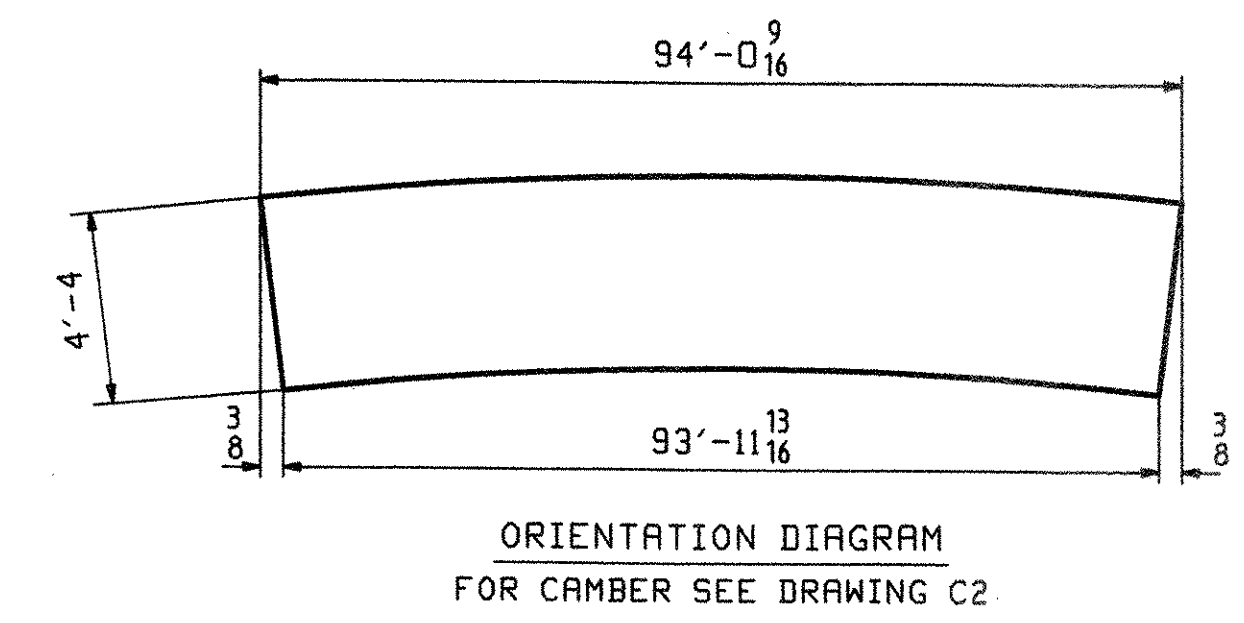
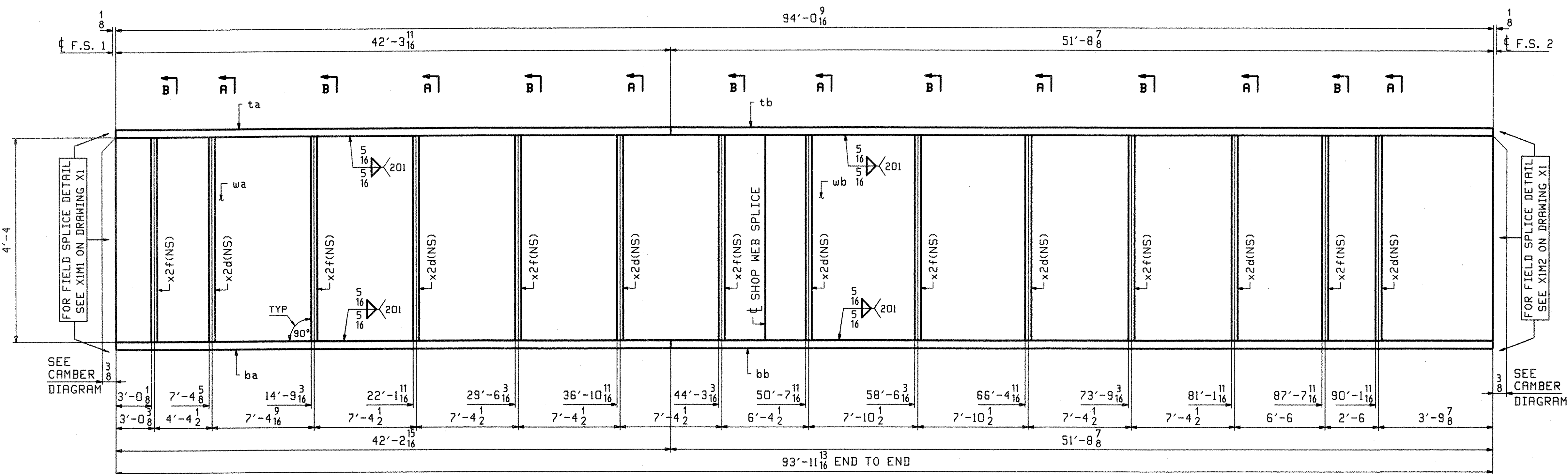
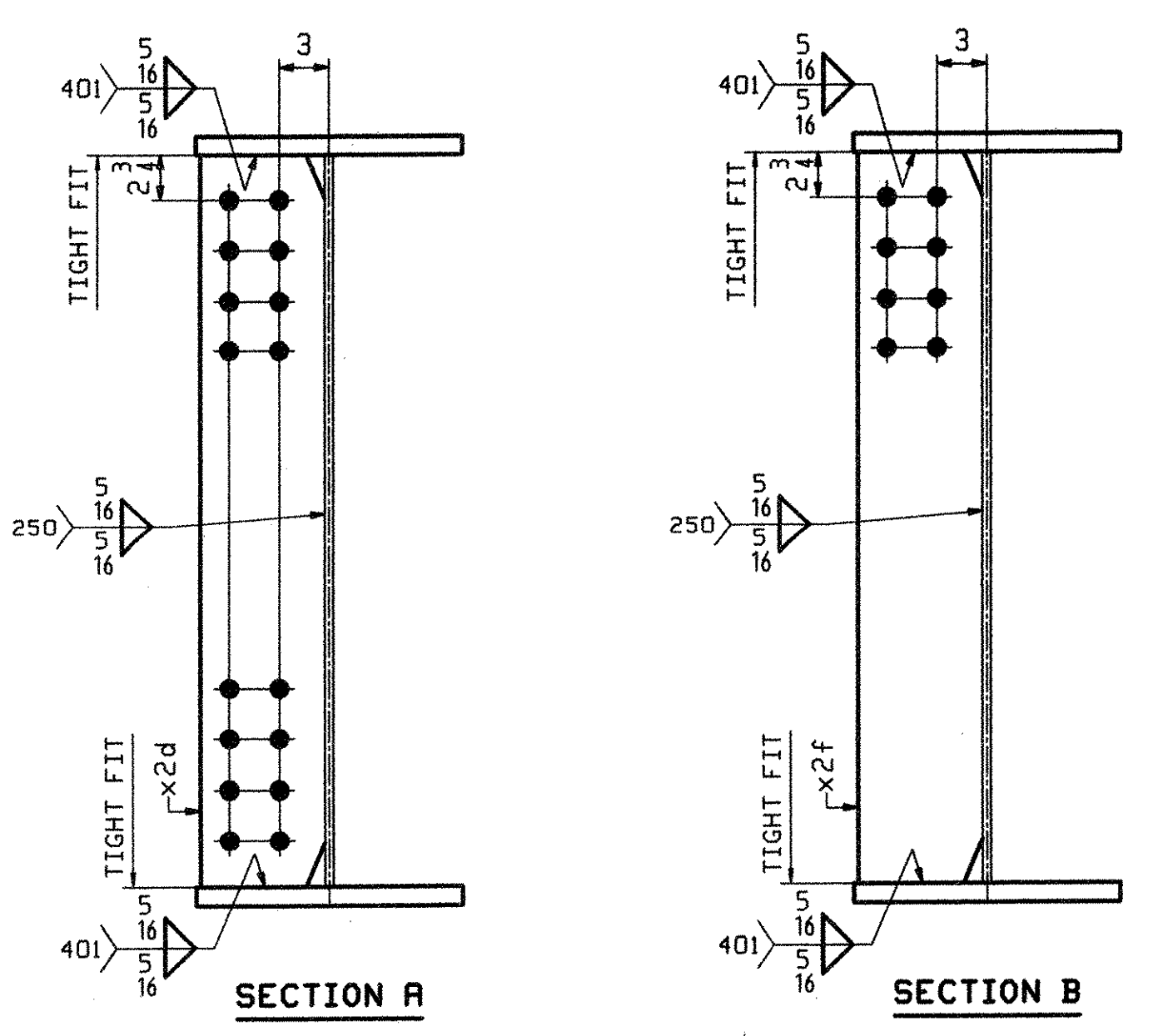


| BILL OF MATERIAL | | JOB NO. | DRAWING NO. | REV. | | | | | |
|------------------|------|---------|-------------|------|--------------|---------------------|---------------------|-------|----------------------|
| | | 290 | 7 | | | | | | |
| PAGE | LINE | MARK | QTY | MARK | MATERIAL | LENGTH FT INCHES | REMARKS | WT | PROCUREMENT NOTES |
| | | 7G1B | 1 | | GIRDER | | | 18052 | |
| 1 | L | | 1 | wa | PL 1/2x52 | 49 6 1/8 | (M270-50WT2) (H2-3) | | |
| 1 | N | | 1 | wb | PL 1/2x52 | 44 6 1/8 | (M270-50WT2) (H2-3) | | |
| 1 | G | | 1 | ta | PL 7/8x16 | 42 3 1/8 | (M270-50WT2) (H2-3) | | |
| 1 | E | | 1 | tb | PL 7/8x16 | 51 8 7/8 | (M270-50WT2) (H2-3) | | |
| 1 | G | | 1 | ba | PL 7/8x16 | 42 2 1/8 | (M270-50WT2) (H2-3) | | |
| 1 | E | | 1 | bb | PL 7/8x16 | 51 8 7/8 | (M270-50WT2) (H2-3) | | |
| 2 | J | | 7 | x2d | PL 1/2x7 1/2 | 4 4 | | | |
| 2 | J | | 7 | x2f | PL 1/2x7 1/2 | 4 4 | | | |



ONE - GIRDER - 7G1B
 FOR FIELD SPLICE DETAILS SEE DRAWING X1.
 FOR GIRDER STANDARD DETAILS SEE DRAWING X2.
 FOR CAMBER & FLANGE DIAGRAMS SEE DRAWING C2.
 FOR GENERAL NOTES SEE DRAWING GNI.
 H2-3 DENOTES MATERIAL SUBJECT TO CHARPY V-NOTCH TESTING.



RECEIVED
 OK'D BY: [Signature]
 JUL 26 2006
 RESUBMIT APPROVED [Signature]
 BY: [Signature] DATE: 7/28/06

| | | | | | | | | | | | |
|---|---------------|---|-----|---------|-----|---------------------|-------------|------|-----|------|--------|
| OUT FOR APPROVAL | Final 7-17-06 | | | | | | | | | | |
| OUT FOR APPROVAL | | | | | | | | | | | |
| ISSUED TO SHOP | | | | | | | | | | | |
| FIELD & OFFICE | | | | | | | | | | | |
| REV. | REMARKS | DATE | DWN | CHK | APP | Q.A. | NO. | DIA. | LGT | TYPE | WASHER |
| | MATERIAL: | ELECTRODES: | | HOLES: | | SHOP BOLTS: | | NONE | | | |
| | M270-50W (UN) | | | 15/16 φ | | | | | | | |
| SURFACE PREP. & PAINT: SEE DRAWING GNI | | | | | | | | | | | |
| DESCRIPTION: | | GIRDER - 7G1B | | | | DRAWN BY | DATE | | | | |
| JOB: | | RTE 9 OVER ROARING BRANCH OF WALLOOMSAC RIVER | | | | JTB | 02/22 | | | | |
| | | BRIDGE No. BR 11 | | | | CHKD BY | | | | | |
| | | WOODFORD, VT. BENNINGTON COUNTY | | | | PCP | 03/06 | | | | |
| | | | | | | APPROV BY | | | | | |
| | | | | | | SUPERVISOR | M. J. GATTI | | | | |
| PROJ NO. | | BHF 010-1(29) | | | | Q.A. | | | | | |
| CUSTOMER: RENAUD BROTHERS, INC. | | | | | | | | | | | |
| CASCO BAY STEEL STRUCTURES, INC. | | | | | | JOB NO. | DRG. NO. | | | | |
| 75 SPRING HILL ROAD | | | | | | 290 | 7 | | | | |
| PHONE (207) 282-7360 | | | | | | SACO, MAINE 04072 | | | | | |
| | | | | | | FAX. (207) 282-1179 | | | | | |
| | | | | | | REV. | | △ | | | |