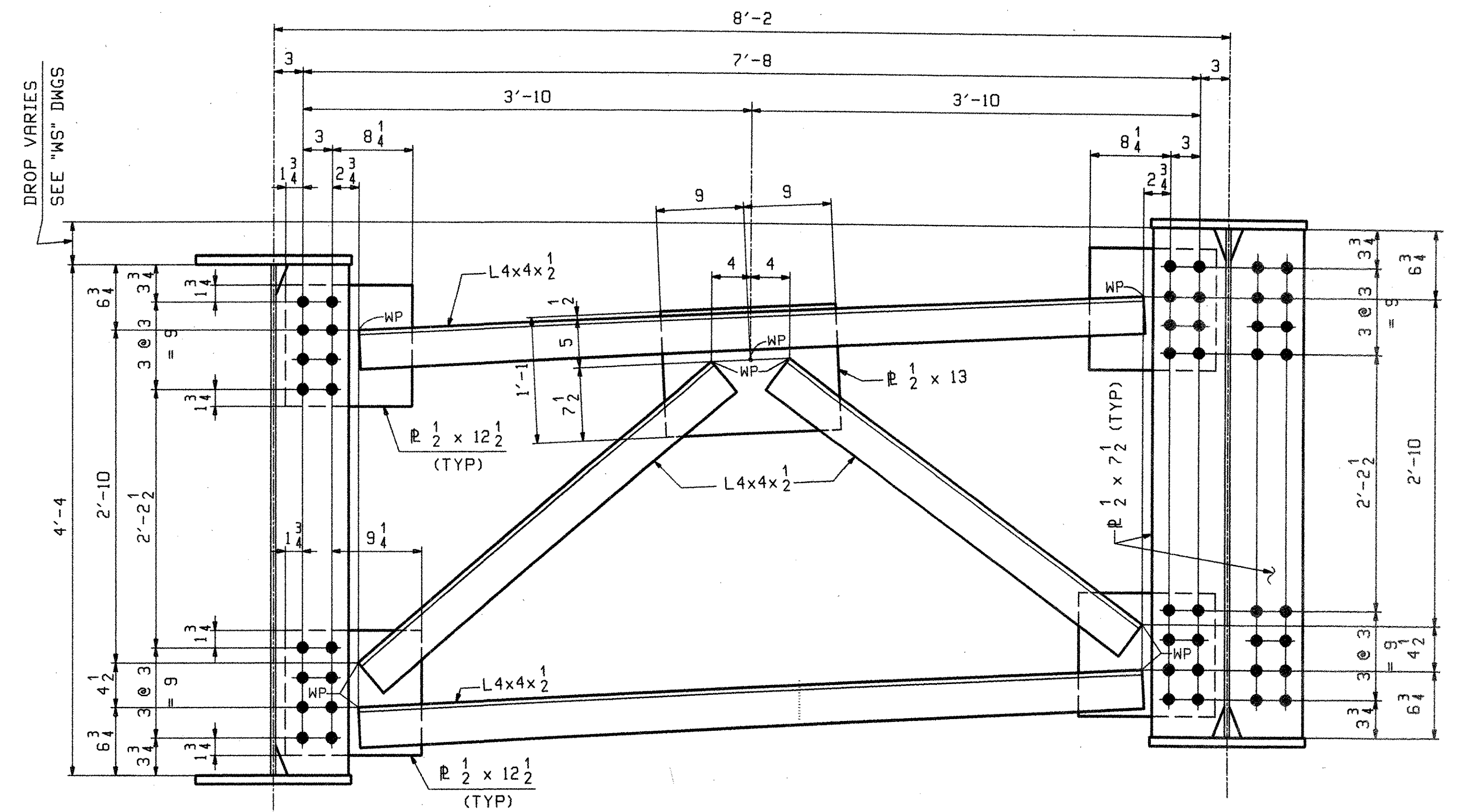
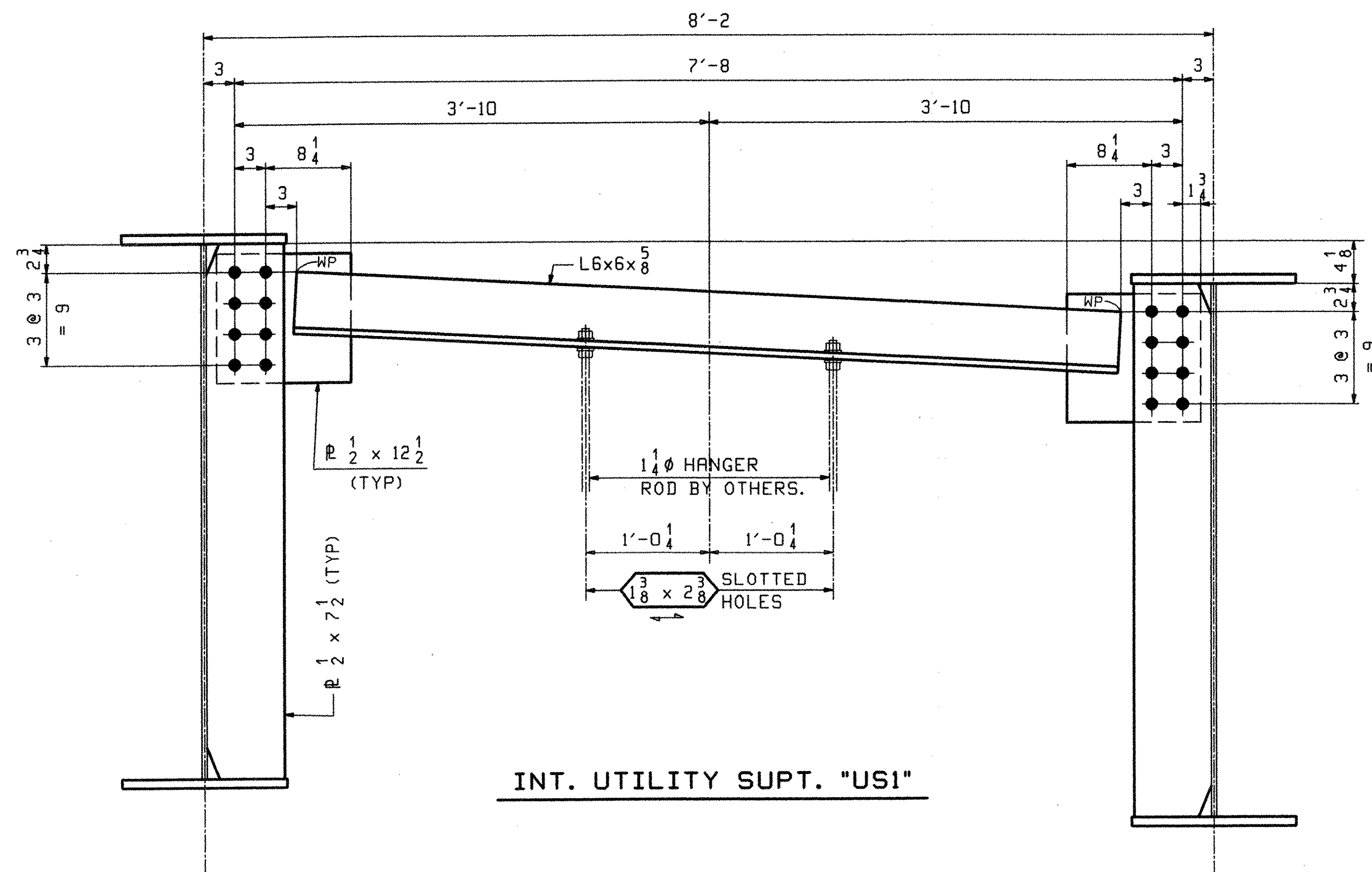


TYPICAL UTIL. SUPT. CROSSFRAME "CF2"



TYPICAL INTERMEDIATE CROSSFRAME "CF1"



INT. UTILITY SUPT. "US1"

RECEIVED
 OK'D BY: *MGM*
 JUL 26 2006
 RESUBMIT: _____ APPROVED: *[Signature]*
 BY: _____ DATE: 7/28/06

**** NOTE ****
 THE PURPOSE OF THIS DRAWING IS TO COORDINATE GEOMETRIC CONTROL INFORMATION AND CONNECTION SPACING. THIS DWG IS SUBMITTED FOR INFORMATION ONLY & IS NOT INTENDED FOR SHOP FABRICATION. DETAIL DWGS WILL SHOW ALL WELDING AND DIMENSIONS REQ'D FOR FABRICATION.

OUT FOR APPROVAL	Final 7-17-06																			
OUT FOR APPROVAL																				
ISSUED TO SHOP																				
FIELD & OFFICE																				
REV.	REMARKS	DATE	DWN	CHK	APP	Q.A.	NO.	DIA.	LGT	TYPE	WASHER									
	MATERIAL:																			
	M270-50W (UN)																			
	ELECTRODES:																			
	HOLES:																			
	SURFACE PREP. & PAINT:																			
	DESCRIPTION: TYPICAL CROSSFRAME LAYOUTS																			
	JOB: RTE 9 OVER ROARING BRANCH OF WALLOOMSAC RIVER																			
	BRIDGE No. BR 11																			
	WOODFORD, VT. BENNINGTON COUNTY																			
	TENSOR 2608																			
	PROJ NO. BHF 010-1(29)																			
	CUSTOMER: RENAUD BROTHERS, INC.																			
	CASCO BAY STEEL STRUCTURES, INC.																			
	75 SPRING HILL ROAD SACO, MAINE 04072																			
	PHONE (207) 282-7360 FAX. (207) 282-1179																			
	JOB NO.	DRG. NO.																		
	290	TD1																		
	REV.																			
	△																			