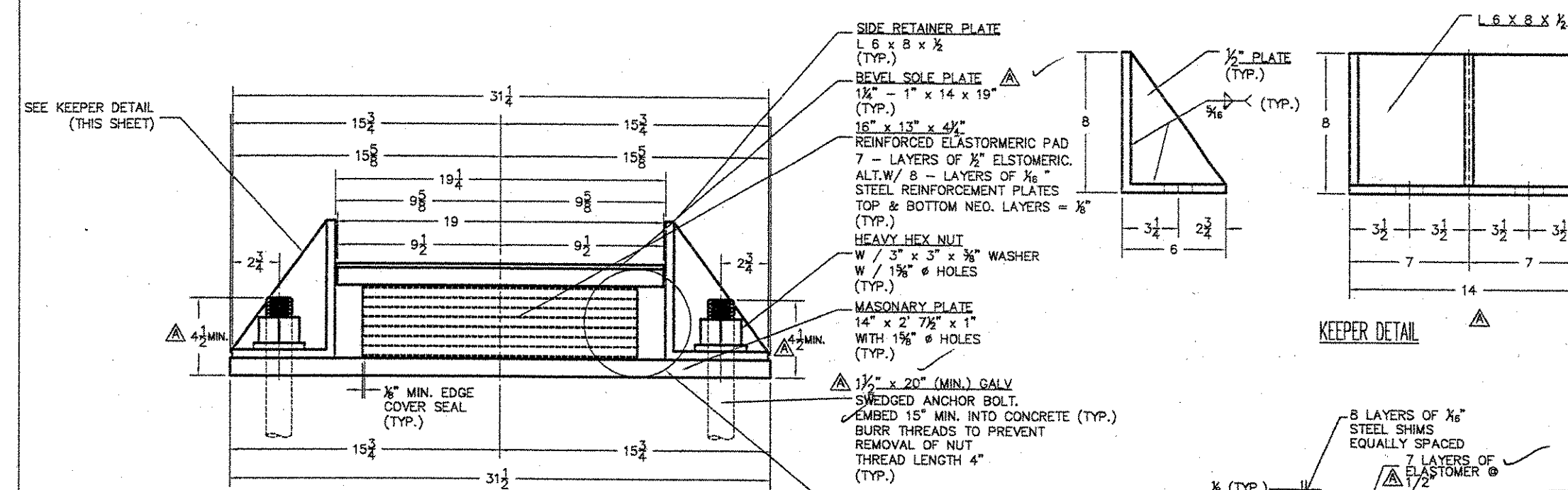
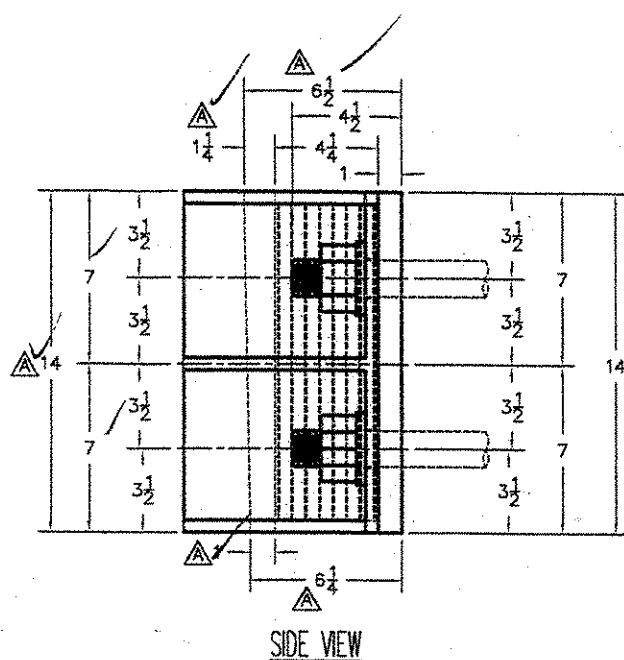
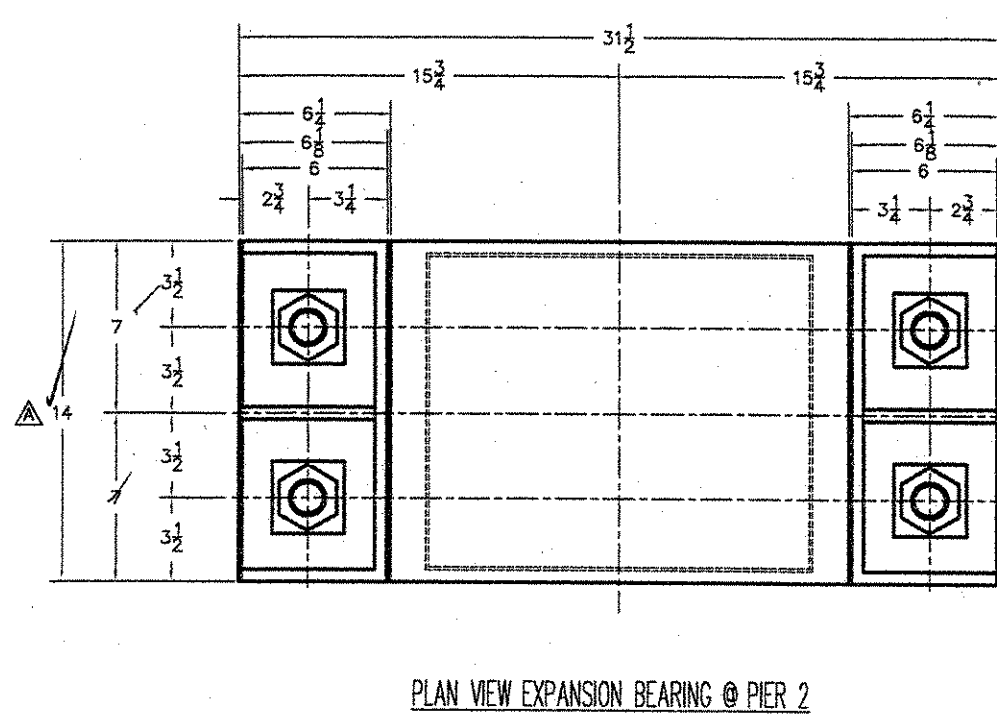


REVISIONS				
ZONE	REV	DESCRIPTION	DATE	APPROVED
MECH.	A	PER ENGINEER'S MARKS	4/2/06	C.A.M.

- NOTES:
1. BEARINGS TO BE MANUFACTURED ACCORDING TO AMSDOT STANDARD SPECIFICATIONS FOR HIGHWAY BRIDGES, 17th EDITION, 2002.
 2. THE BEARINGS ARE DESIGNED SO THAT THE SUPERSTRUCTURE MAY BE ERECTED WHEN THE AMBIENT AIR TEMPERATURE IS WITHIN THE RANGE OF 4 DEG. C. TO 32 DEG. C.
 3. ALL STEEL IN BEARINGS SHALL BE AASHTO M270 GRADE 50, U.L.C.
 4. NEOPRENE SHALL BE AASHTO CR. 40 DIAPHRAGM +/- 5, OR 4.
 5. ALL STEEL PRODUCED IN THE U.S.A.
 6. CONTACT PETER SOMICH, COORDINATOR.
 7. TOLERANCES: THICKNESS -0.1/0
PLAN -0.1/0
 8. MANUFACTURING FACILITY LOCATION:
AMSDOT STRUCTURAL PRODUCTS INC.
100 EAST BLACKWELL STREET
DOVER, NJ 07801
 9. ALL DIMENSIONS ARE IN INCHES.
 10. ALL BEARING SURFACES SHALL BE METALLIZED AS PER STANDARD SPECIFICATIONS SHEETS AND 531.04(5). IF THE BEARINGS ARE METALLIZED, THEY SHALL BE SEALED WITH AN APPROVED SEALER AS SPECIFIED IN STANDARD SPECIFICATION 536.15.
 11. ALL ANCHOR BOLTS, NUTS AND WASHERS SHALL BE GALVANIZED PER AASHTO M252.
 12. PRIOR TO METALLIZING, ALL CORNERS AND EDGES OF STEEL PLATES, SHAPES, ETC. SHALL BE GROUNDED TO A 1/16" RADIUS (TYP.).
 13. A MINIMUM THICKNESS OF 6 MILS SHALL BE APPLIED TO METALLIZED SURFACES (TYP.).
 14. EXTERIOR SURFACES SHALL BE SEALED WITH AN APPROVED SEALANT CONFORMING TO THE RECOMMENDATIONS OF THE THERMAL SPRAY SUPPLIER (TYP.).
 15. BEARING GUNGE ASSEMBLY ITEM NO. 531.10
 16. THE STEEL SOLE PLATES AND MASONRY PLATES SHALL BE NOT BONDED TO THE REINFORCED ELASTOMERIC PAD DURING THE GALVANIZATION PROCESS. THE STEEL SURFACES TO BE BONDED TO THE PAD SHALL NOT BE METALLIZED.



RECEIVED
 CK'D BY *WJF* CK'D BY _____
 APR 14 2006
 RESUBMIT _____ APPROVED *X*
 BY _____ DATE 04/2/06

BRIDGE NO. 11	PROJECT NO.: BHPT 010-1 (29)
EXPANSION BEARING DETAILS PIER NO. 2	
HWY. NO. VT 9 OVER ROARING BRANCH OF WALLOOMSACH, TOWN OF WOODFORD	
PRIME CONTRACTOR: RENAUD BROS., INC.	SCALE = N.T.S.
FABRICATOR: AMSDOT STRUCTURAL PRODUCTS CORP.	
DWG. NO.: RB0549A	SHEET NO. 1 OF 4