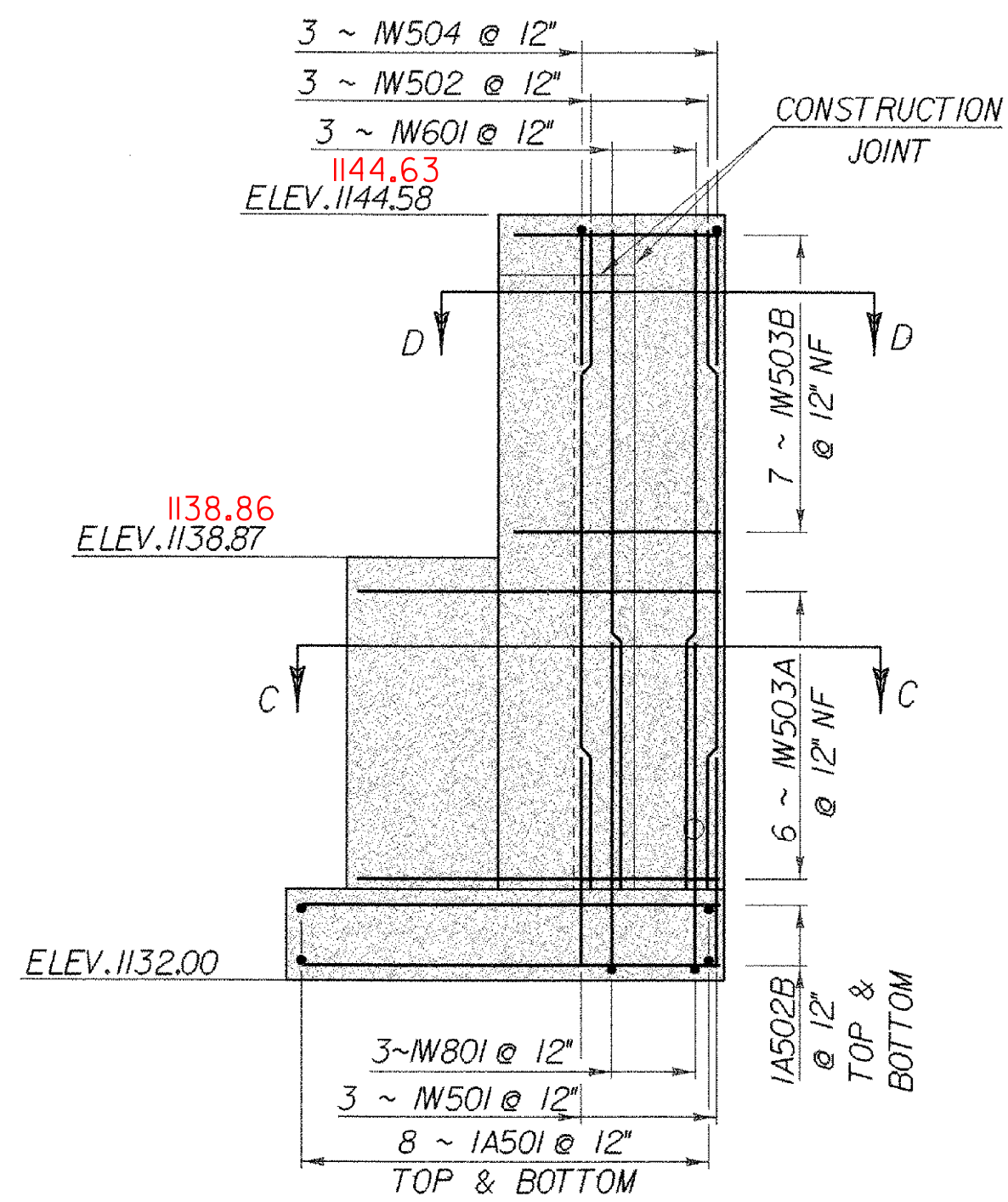


**ABUTMENT # 1
TYPICAL SECTION
(ABUT.# 2
SIMILAR)**

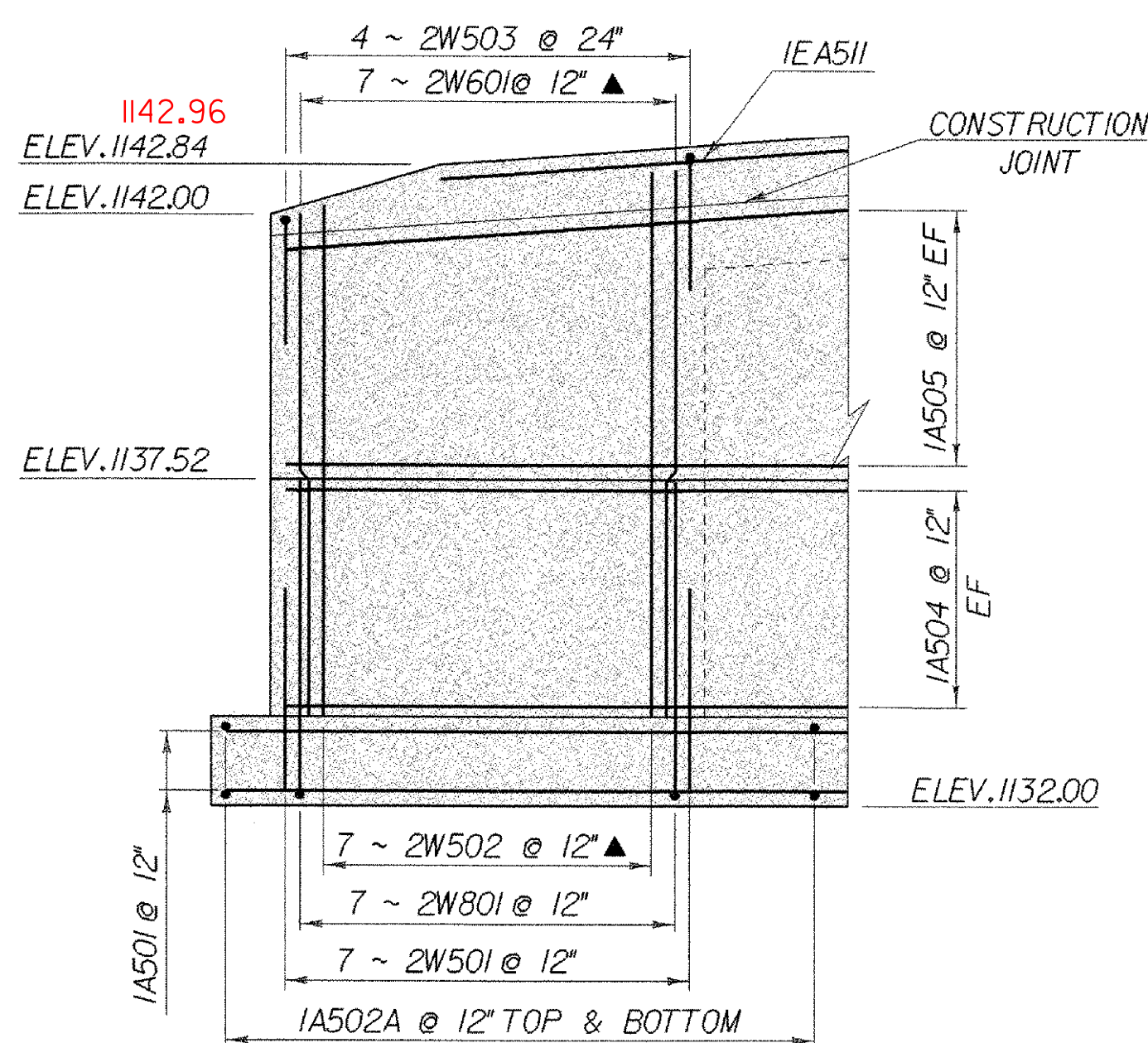
SCALE 3/4" = 1'-0"

NOTE: FOR SECTION A-A AND SECTION B-B SEE SHEET 74



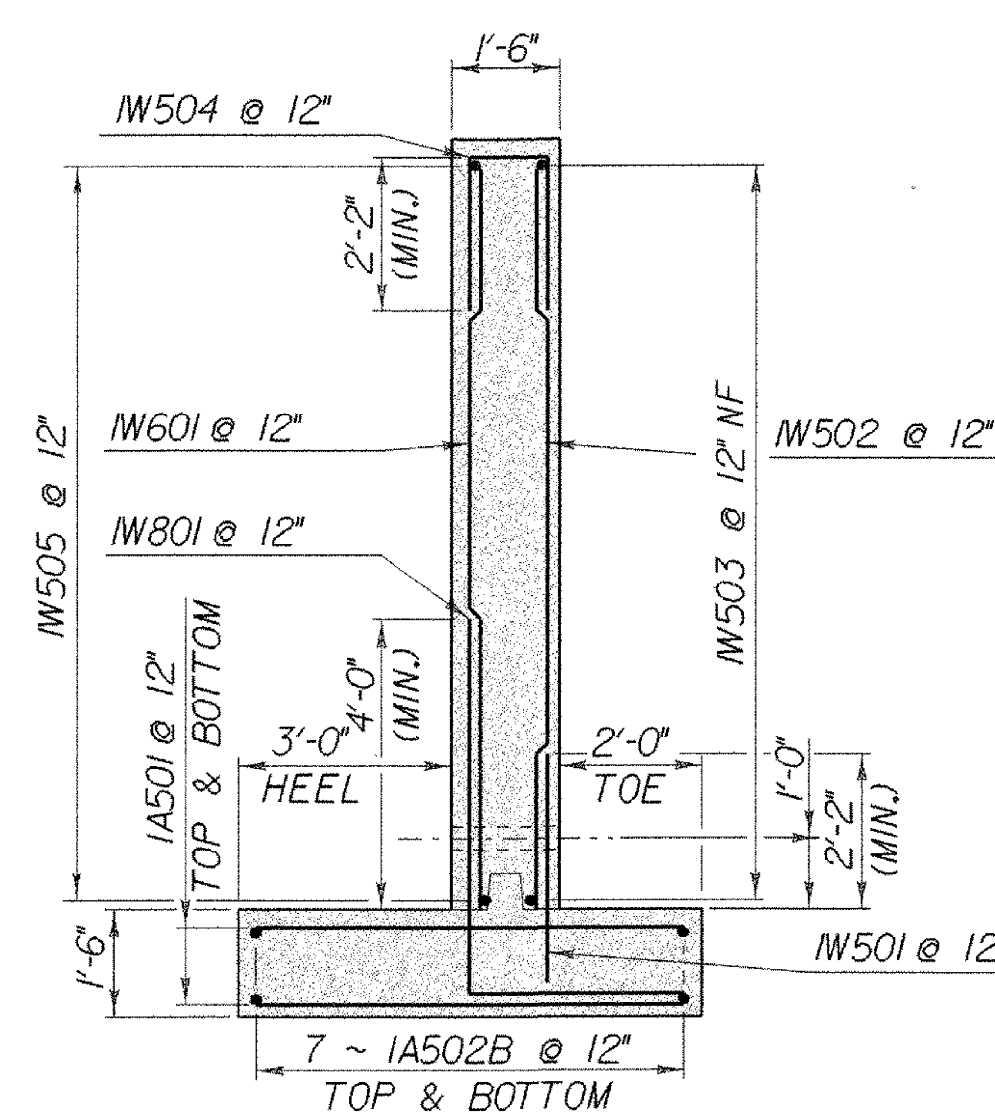
WINGWALL NO. 1 REINFORCING ELEVATION

SCALE 3/8" = 1'-0"



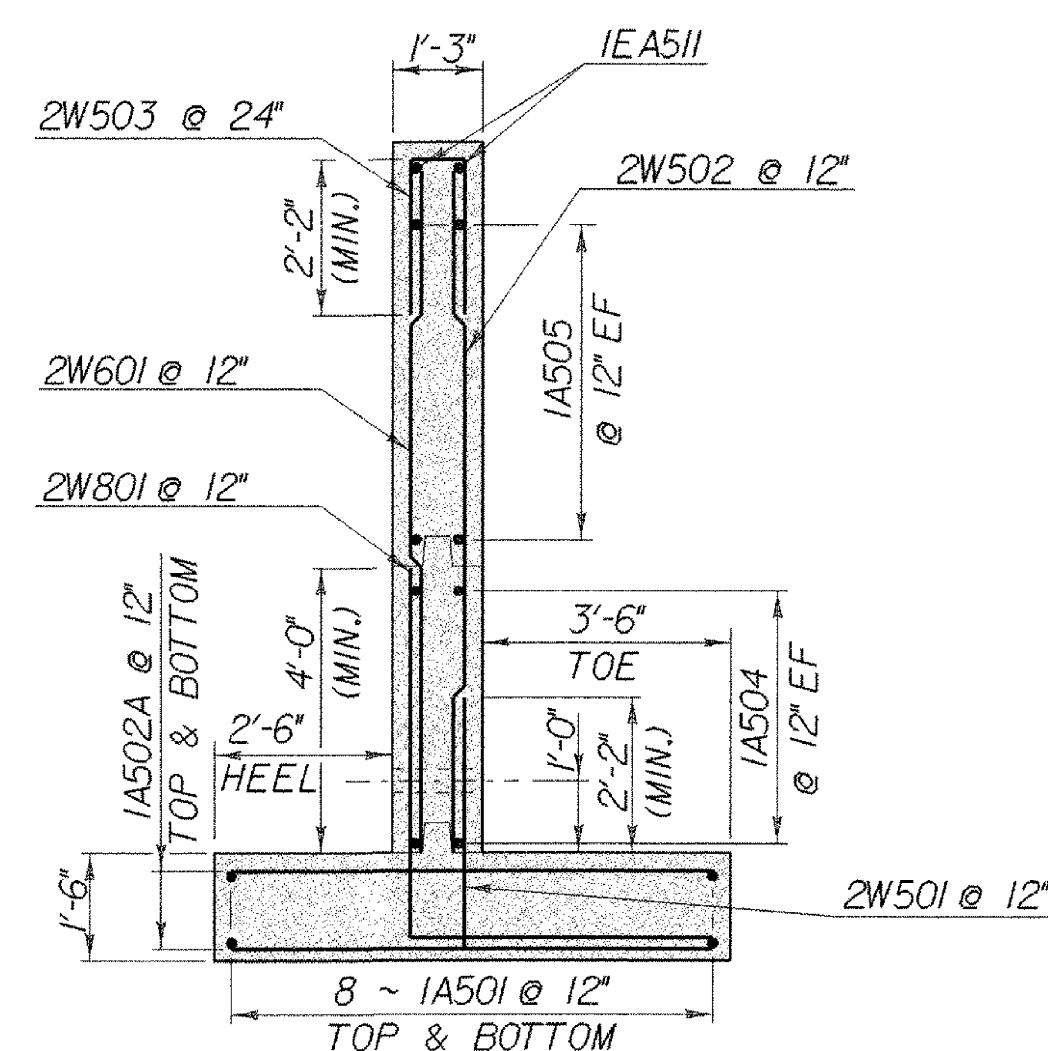
WINGWALL NO. 2 REINFORCING ELEVATION

SCALE 3/8" = 1'-0"



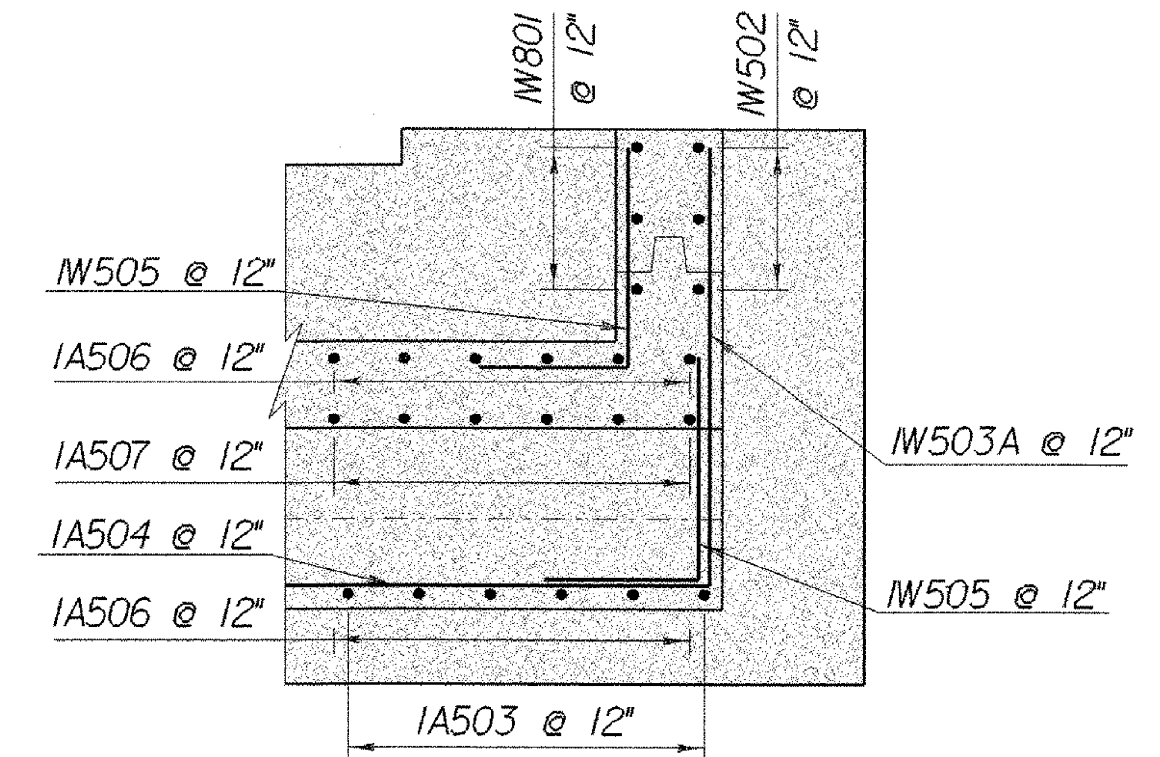
WINGWALL NO. 1 TYPICAL

SCALE 3/8" = 1'-0"



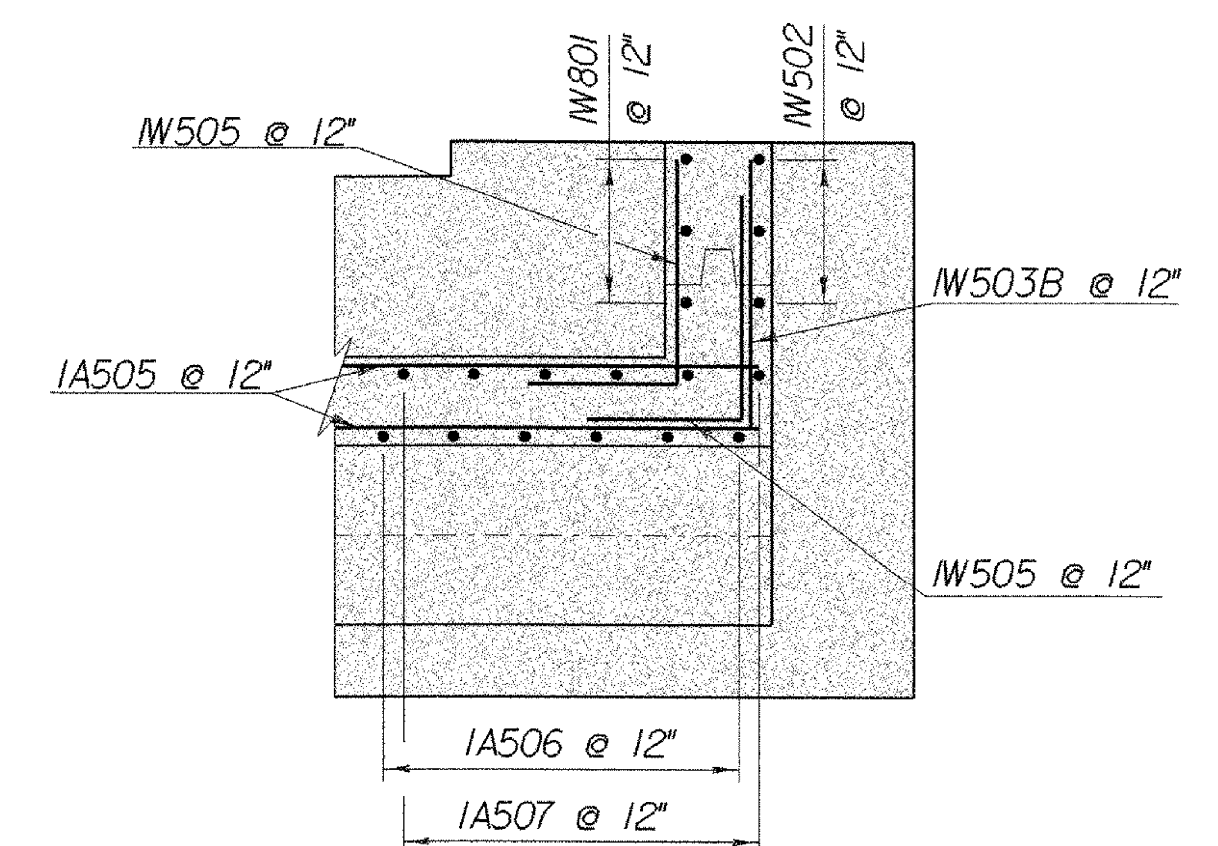
WINGWALL NO. 2 TYPICAL

SCALE 3/8" = 1'-0"



**SECTION C-C
CORNER DETAIL WINGWALL NO. 1**

SCALE 3/8" = 1'-0"



**SECTION D-D
CORNER DETAIL WINGWALL NO. 1**

SCALE 3/8" = 1'-0"

NOTE:
NF = NEAR FACE
FF = FAR FACE
EF = EACH FACE
▲ = CUT TO FIT IN FIELD
3" CLR. UNLESS OTHERWISE SPECIFIED ON THE PLANS.

STATE OF VERMONT AGENCY OF TRANSPORTATION	
Town Of WOODFORD	Bridge No. BR 11
Highway No. VT 9	Log Sta. Surv. Sta.
VT 9 OVER ROARING BRANCH OF WALLOOMSAC ABUT. TYP. SECTION WINGWALL 1&2 REINFORCING	
Designed By M. EVANS-MONGEON	Drawn By R. PELLETT
Checked By M. EVANS-MONGEON	Bridge Design Supervisor Date A. PORTALUPI Date
PROJECT WOODFORD	PROJECT NO. BHF 010-K29
I.G.C. Info. /84e039/Structures/se039sub.dgn	se039wrlj
Bridge Sheet No.	Sheet 73 of 106