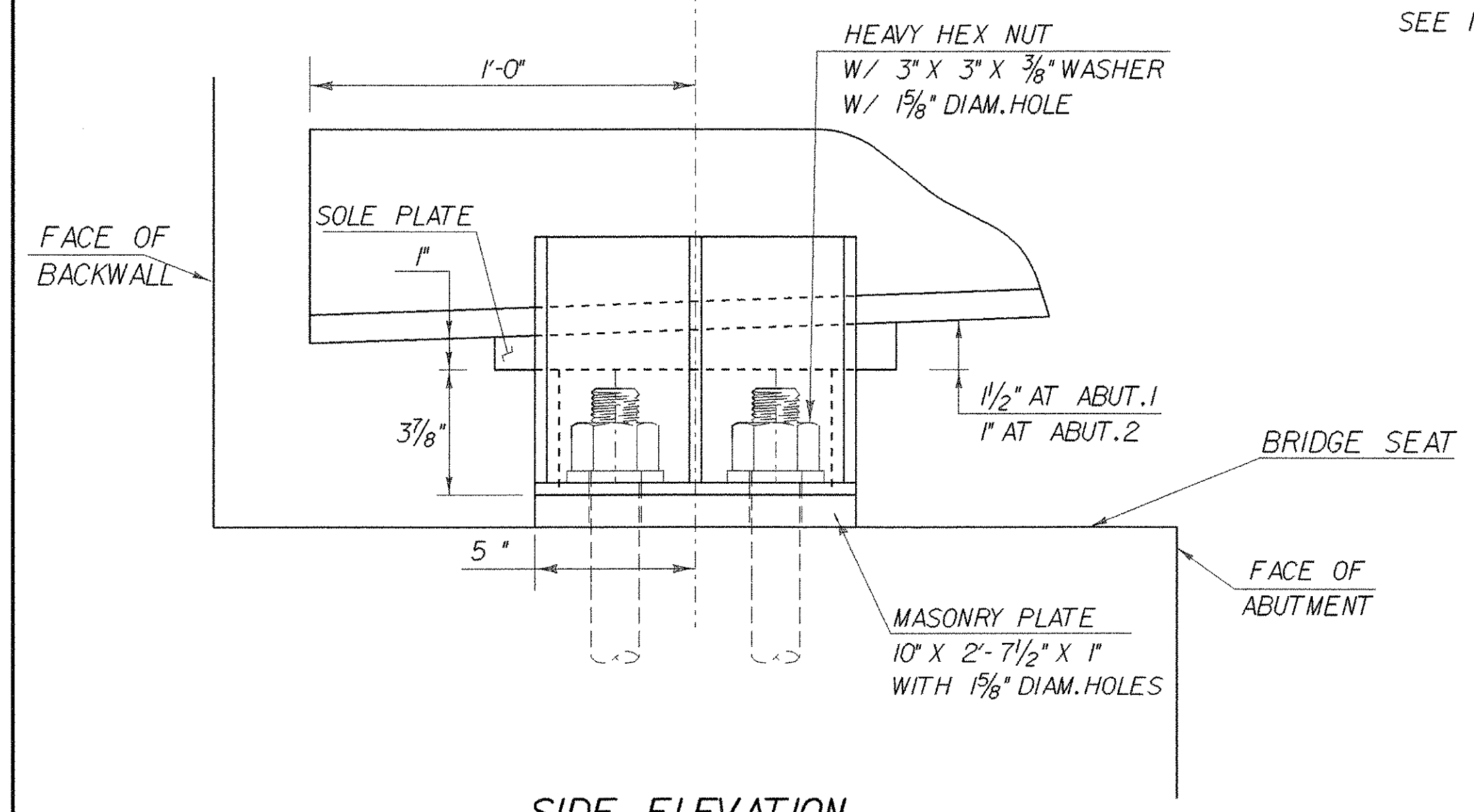
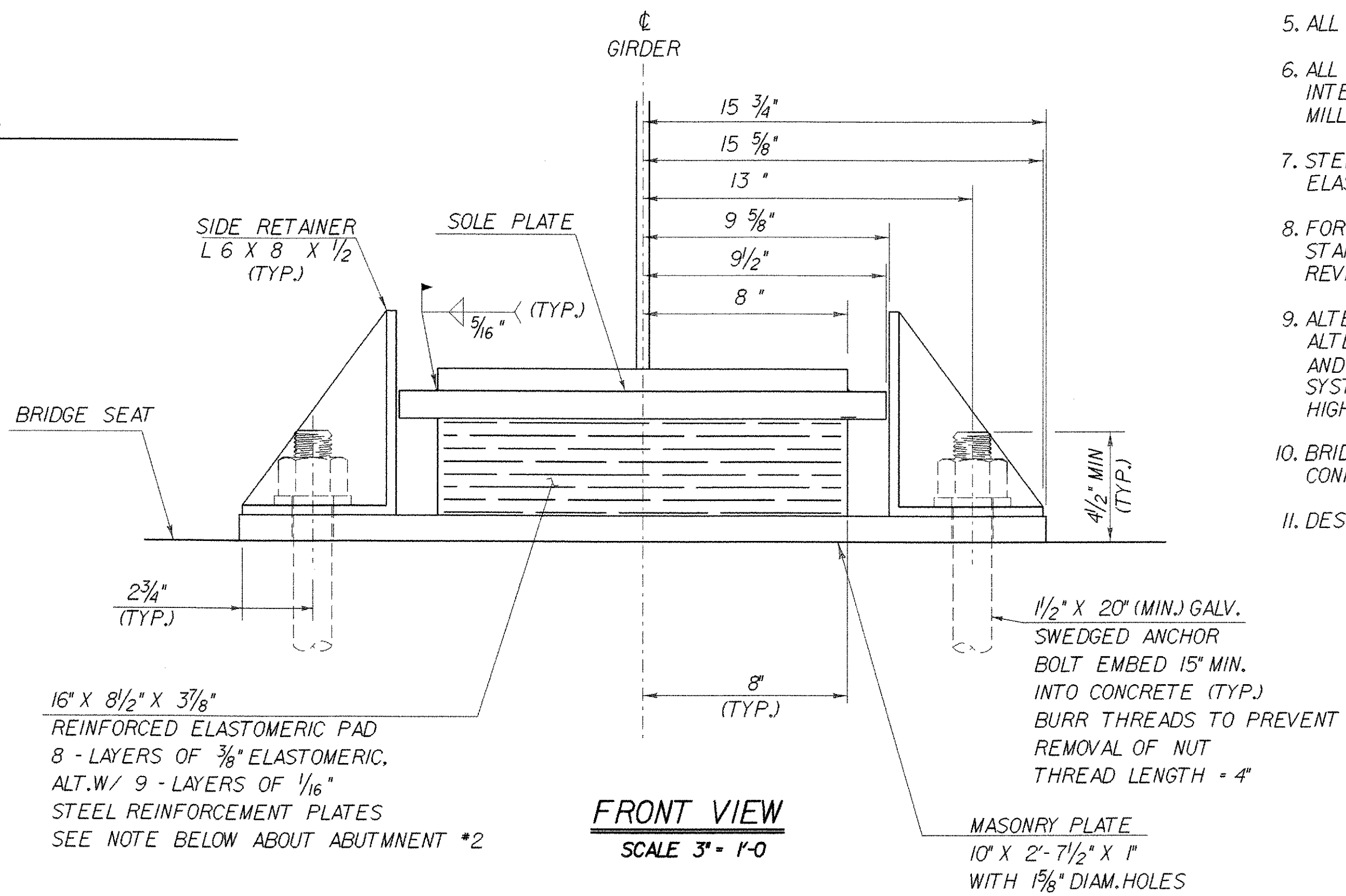


PLAN
SCALE 3" = 1'-0"

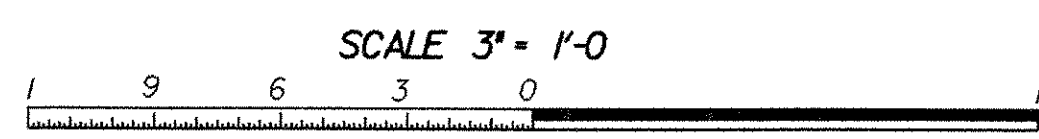


SIDE ELEVATION
SCALE 3" = 1'-0"

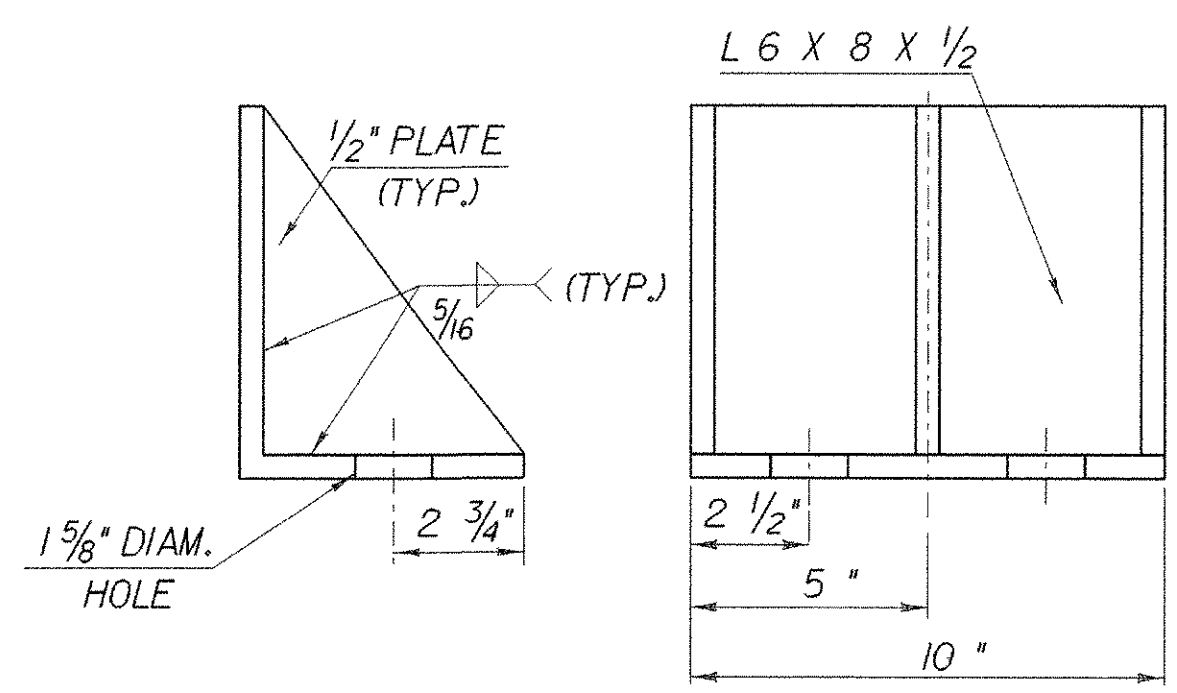


FRONT VIEW
SCALE 3" = 1'-0"

NOTE: ABUTMENT NO.1 IS SHOWN, ABUTMENT NO.2 IS SIMILAR EXCEPT REINFORCED ELASTOMERIC PAD FOR ABUTMENT NO.2 IS: 16" X 8 1/2" X 6 1/16" WITH 13 LAYERS OF 3/8" ELASTOMERIC, ALT. W/ 14 LAYERS OF 15 GAGE STEEL REINFORCEMENT PLATES



SCALE 3" = 1'-0"



SIDE RETAINER
SCALE 3" = 1'-0"

BEARING DEVICE NOTES

1. BEARINGS SHALL BE PAID FOR UNDER THE ITEM 531.0 "BEARING DEVICE ASSEMBLY" AND SHALL CONFORM TO APPLICABLE SUBSECTIONS OF SECTION 531 AND 731.
2. THE FIELD WELD CONNECTING THE BOTTOM FLANGE WITH THE BEARING DEVICE SHALL BE MADE WITH E7018 RODS. AREAS OF METALIZING DAMAGED BY WELDING AND/OR HANDLING SHALL BE REPAIRED BY METALIZING IN ACCORDANCE WITH ASTM A 760/760M.
3. SHOP DRAWINGS CONFORMING TO SUBSECTION 531.03 SHALL BE SUBMITTED AND INCLUDE ANY NECESSARY WELDING OR BONDING PROCEDURES. THE SHOP DRAWINGS SUBMITTAL SHALL ALSO INCLUDE A TYPE D CERTIFICATION PER SECTION 700.02 (C).
4. ALL STEEL COMPONENTS SHALL BE METALIZED AS PER SECTION 531.04(b) AND 506.15. AFTER THE BEARINGS ARE METALIZED, THEY SHALL BE SEALED WITH AN APPROVED PRIMER AS SPECIFIED IN SUBSECTION 506.15(c). ALL WASHERS SHALL BE 3/8" PLATE MINIMUM. PAYMENT FOR ANCHOR BOLTS, NUTS, AND WASHERS SHALL BE INCLUDED IN THE UNIT BID PRICE FOR "BEARING DEVICE ASSEMBLY". ANCHOR BOLTS, NUTS AND WASHERS SHALL BE GALVANIZED PER AASHTO M 232/M 232M.
5. ALL STEEL IN BEARING DEVICES SHALL BE AASHTO M 270/M 270M GRADE 36.
6. ALL REINFORCEMENT BETWEEN LAYERS OF ELASTOMERIC SHALL BE STEEL ASTM A36. ALL INTERNAL STEEL PLATES SHALL BE SAND BLASTED AND FREE OF COATINGS, RUST, AND MILL SCALE. THE PLATES SHALL BE FREE OF SHARP EDGES AND BURRS.
7. STEEL REINFORCED ELASTOMERIC BEARINGS SHALL HAVE A MINIMUM OF 1/8" EDGE SEAL OF ELASTOMER INTEGRAL WITH THE BEARING OVER ALL INTERNAL PLATES.
8. FOR ELASTOMERIC BEARINGS, ALL MATERIALS AND FABRICATION SHALL BE PER AASHTO STANDARD SPECIFICATIONS FOR HIGHWAY BRIDGES, EDITION 2002 AND ITS LATEST REVISIONS AND AASHTO M 251/M 251M.
9. ALTERNATE CONFIGURATIONS FOR BEARINGS MAY BE SUBMITTED FOR APPROVAL. ANY ALTERNATE SUBMITTED SHALL BE DESIGNED AND CERTIFIED TO MEET THE DESIGN LOADS AND CRITERIA SHOWN ON THIS SHEET. THE ALTERNATE SHALL MAINTAIN THE ANCHORAGE SYSTEM SHOWN AND SHALL BE DESIGNED PER AASHTO STANDARD SPECIFICATIONS FOR HIGHWAY BRIDGES 2002 EDITION AND ITS LATEST REVISIONS.
10. BRIDGE SEAT ELEVATIONS MAY BE REVISED TO ACCOMMODATE AN ALTERNATIVE CONFIGURATION.
11. DESIGN CRITERIA:
 - A. DESIGN ROTATION = 0.01 RADIANS
 - B. HORIZONTAL CAPACITY SHALL BE MINIMUM OF 20% VERTICAL LOAD IN ANY RESTRAINED DIRECTION.
 - C. VERTICAL DESIGN LOAD PER BEARING:

ABUTMENT BEARINGS	PIER BEARINGS
RDL = 45.0 Kips	RDL = 117.4 Kips
RLL = 79.0 Kips	RLL = 110.3 Kips
 - D. TEMPERATURE RANGE = -30' TO 120'F
 - E. ELASTOMER SHALL HAVE NOMINAL HARDNESS OF 60 ON SHORE 'A' SCALE. ELASTOMER SHALL HAVE A SHEAR MODULUS BETWEEN 130 AND 175 psi. THE RAW ELASTOMER SHALL BE VIRGIN NEOPRENE CLASSIFIED AS LOW TEMPERATURE GRADE 4 AS DEFINED IN TABLE 18.4.5J-1A OF AASHTO, DIVISION II, SECTION 18.
 - F. NO FABRIC REINFORCEMENT WILL BE ALLOWED IN ELASTOMERIC PADS
13. THE BEARING TOLERANCES SHALL MEET THOSE GIVEN IN AASHTO STANDARD SPECIFICATIONS FOR HIGHWAY CONSTRUCTION DATED 2002 AND ITS LATEST REVISIONS, DIVISION II SECTION 18.
12. THE STEEL SOLE PLATES AND MASONRY PLATES SHALL BE HOT BONDED TO THE REINFORCED ELASTOMERIC PAD DURING THE VULCANIZATION PROCESS. THE STEEL SURFACES TO BE BONDED TO THE PAD SHALL NOT BE METALIZED.
14. THE ANCHOR BOLTS SHALL MEET THE REQUIREMENTS OF A 307 GR. C.

STATE OF VERMONT AGENCY OF TRANSPORTATION			
Town Of	WOODFORD	Bridge No.	BR 11
Highway No.	VT 9	Log Sta.	
		Surv. Sta.	
VT 9 OVER ROARING BRANCH OF WALLOOMSAC			
ABUTMENT BEARINGS AND BEARING NOTES			
Designed By	M. EVANS-MONGEON	Drawn By	R. VANHAMBURG
Checked By		Bridge Design Supervisor	
		Date	
	M. EVANS-MONGEON	A. PORTALUPI	Date
PROJECT	WOODFORD	PROJECT NO.	BHF 010-1(29)
I.G.C. Info.	/84e039/structures/se039sup.dgn		se039brg.j
Bridge Sheet No.		Sheet	66 of 106