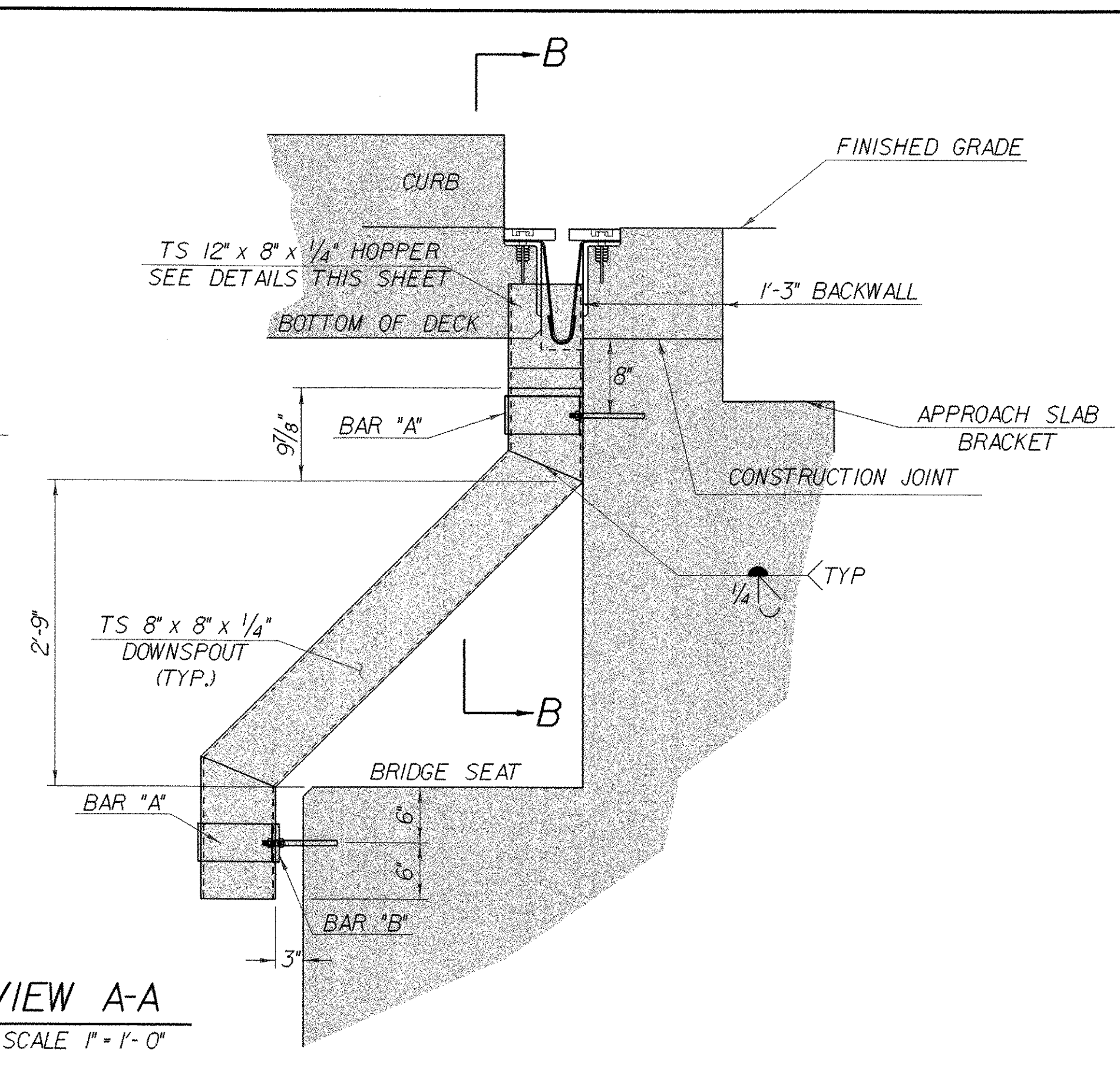
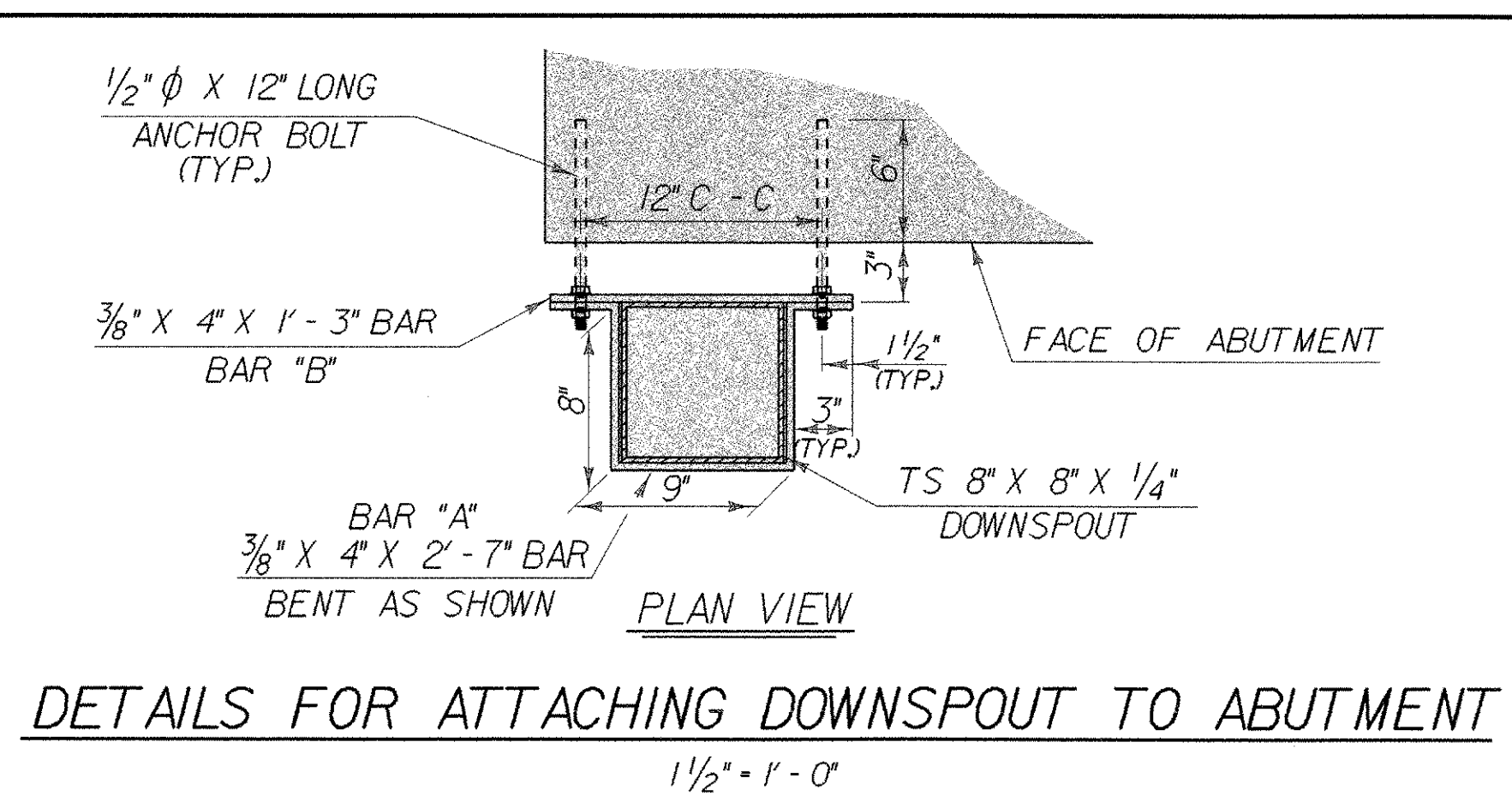


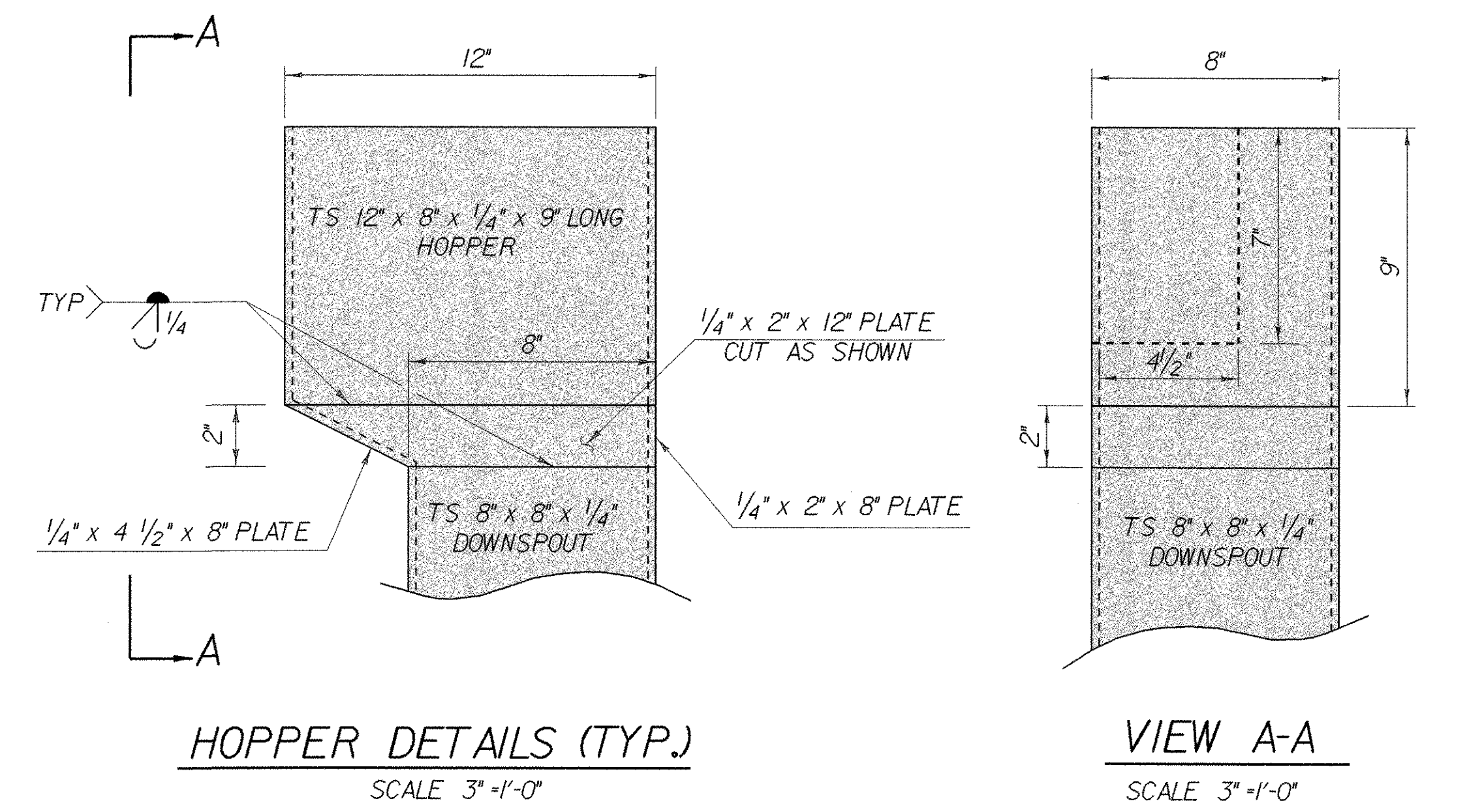
**VIEW B-B**  
SCALE 1" = 1'-0"



**VIEW A-A**  
SCALE 1" = 1'-0"



**DETAILS FOR ATTACHING DOWNSPOUT TO ABUTMENT**  
SCALE 1/2" = 1'-0"

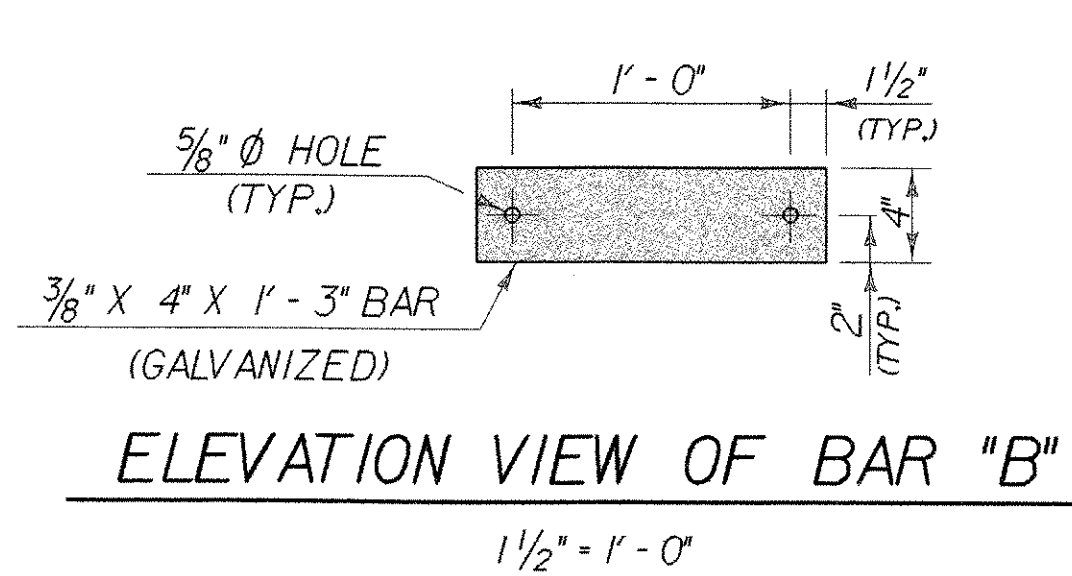


**HOPPER DETAILS (TYP.)**  
SCALE 3" = 1'-0"

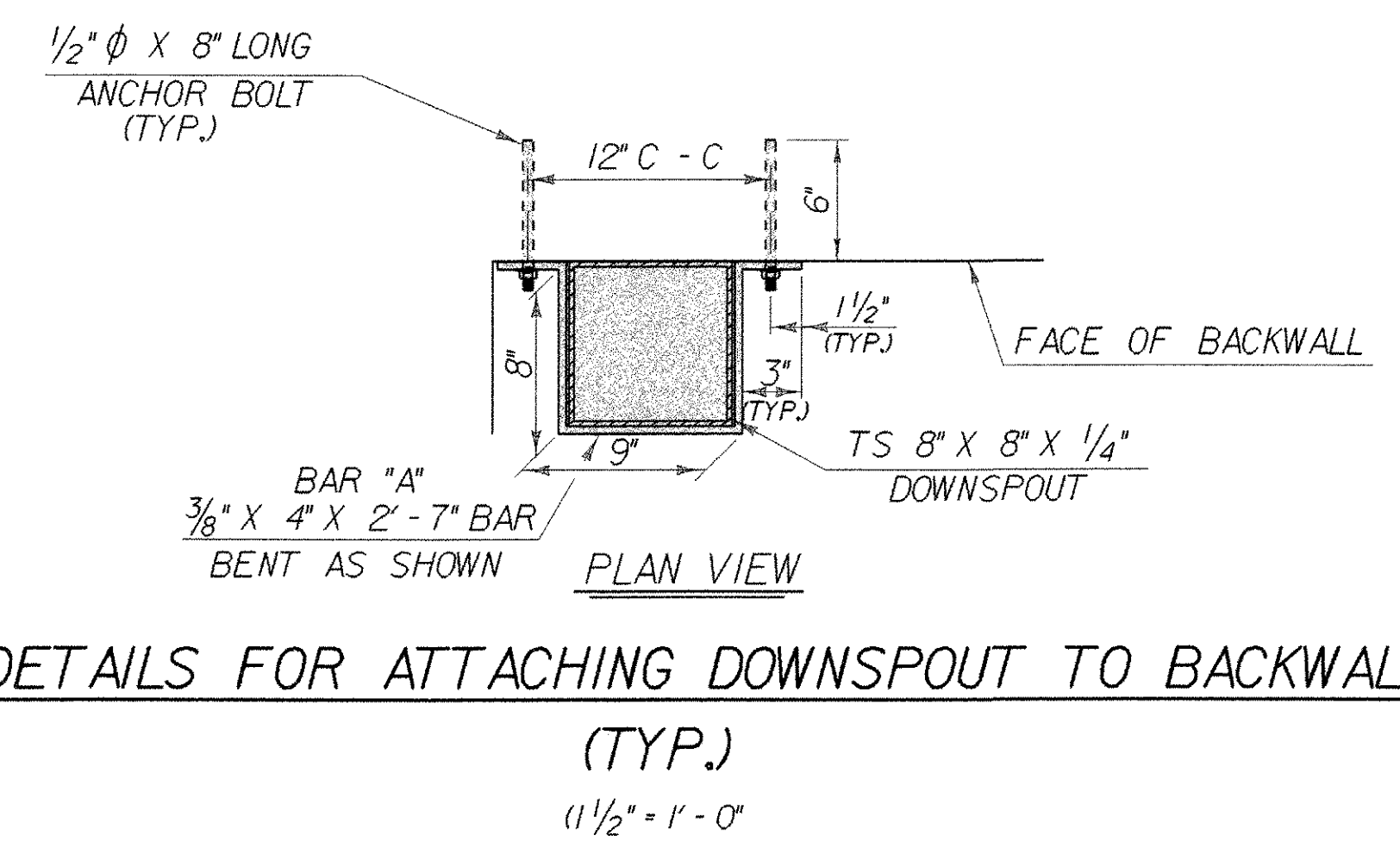
**VIEW A-A**  
SCALE 3" = 1'-0"

**DOWNSPOUT NOTES**

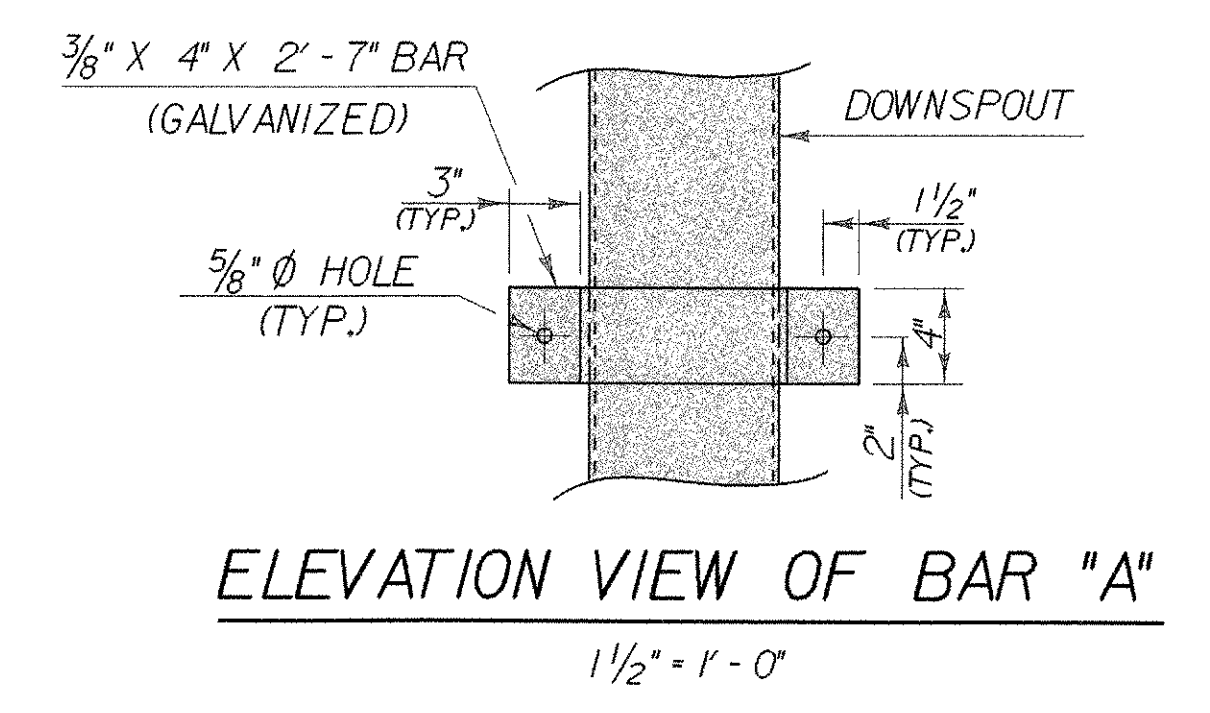
1. ALL HOLLOW STRUCTURAL STEEL TUBING SHALL CONFORM TO ASTM A-500 GR.B.
2. ALL PLATES, BARS, AND ANGLES SHALL CONFORM TO AASHTO M270 / M270 M GR.36.
3. DOWNSPOUT SHALL BE GALVANIZED IN ACCORDANCE WITH AASHTO M111 / M111 M AFTER FABRICATION.
4. ALL BOLTS AND RELATED HARDWARE SHALL BE ASTM A-307 AND SHALL BE GALVANIZED IN ACCORDANCE WITH ASTM A-153 (AASHTO M232).
5. ANY PLACE WHERE THE GALVANIZED HAS BEEN REMOVED FROM THE DOWNSPOUT EITHER BY CUTTING, BURNING, WELDING, PLACING, OR ANY OTHER MEANS, IT SHALL BE REPAIRED IN ACCORDANCE WITH SUPPLEMENTAL SPECIFICATION 513 PAINTING STRUCTURAL STEEL.
6. THE FOUR DOWNSPOUTS AND RELATED HARDWARE FOR EACH SHALL BE PAID FOR UNDER THE ITEM 506.55 "STRUCTURAL STEEL (PLATE GIRDER)".
7. ALL REQUIRED WELDS FOR DOWNSPOUTS SHALL BE DETAILED ON SHOP DRAWINGS WHICH SHALL ALSO INCLUDE ALL APPLICABLE WELDING PROCEDURES.
8. AFTER ALL PAVING AND CONCRETE OPERATIONS THE DOWNSPOUT SHALL BE CLEANED OF ALL CONTAMINATION BY FLUSHING.



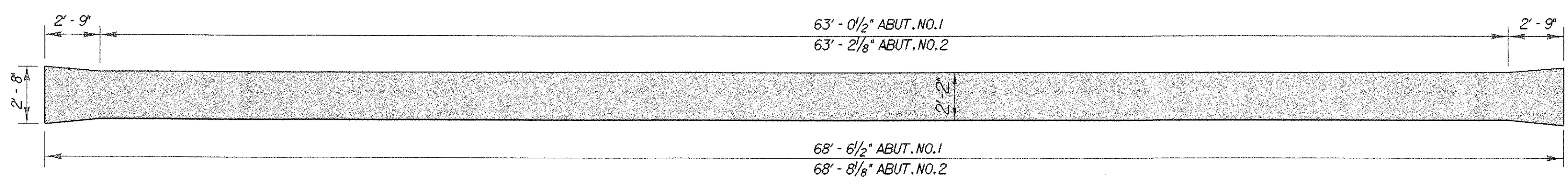
**ELEVATION VIEW OF BAR "B"**  
SCALE 1/2" = 1'-0"



**DETAILS FOR ATTACHING DOWNSPOUT TO BACKWALL (TYP.)**  
SCALE 1/2" = 1'-0"



**ELEVATION VIEW OF BAR "A"**  
SCALE 1/2" = 1'-0"



**TROUGH LAYOUT**  
SCALE 1/4" = 1'-0"

<b>STATE OF VERMONT AGENCY OF TRANSPORTATION</b>			
Town Of	WOODFORD	Bridge No.	BR 11
Highway No.	VT 9	Log Sta.	
		Surv. Sta.	
<b>VT 9 OVER ROARING BRANCH OF WALLOOMSAC DOWNSPOUT AND HOPPER DETAILS</b>			
Designed By	M.EVANS-MONGEON	Drawn By	R.VANHAMBURG
Checked By	M.EVANS-MONGEON	Bridge Design Supervisor	A.PORTALUPI
PROJECT	WOODFORD	PROJECT NO.	BHF 010-1(29)
I.G.C. Info.	/846039/structures/se0391.dgn		se039dsh1
Bridge Sheet No.		Sheet	65 of 106